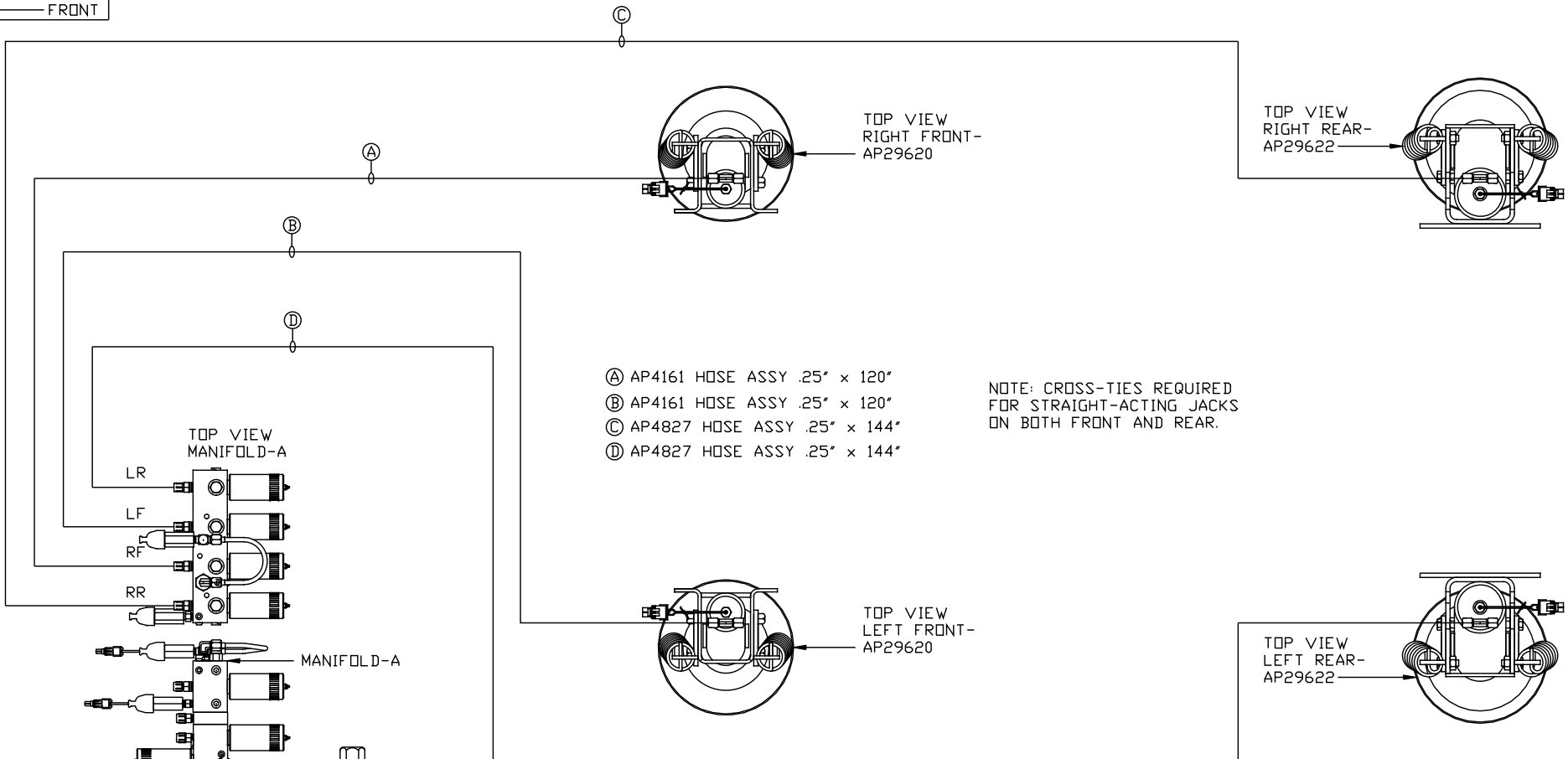


ORIENTATION

← FRONT



TOP VIEW
MANIFOLD-A

LR

LF

RF

RR

MANIFOLD-A

SIDE VIEW PUMP/MANIFOLD-AP38255

LOCATION AND ORIENTATION OF
PUMP/MANIFOLD ASSEMBLY WILL
DIFFER DEPENDING UPON O.E.M.

- Ⓐ AP4161 HOSE ASSY .25" x 120"
- Ⓑ AP4161 HOSE ASSY .25" x 120"
- Ⓒ AP4827 HOSE ASSY .25" x 144"
- Ⓓ AP4827 HOSE ASSY .25" x 144"

TOP VIEW
RIGHT FRONT-
AP29620

TOP VIEW
RIGHT REAR-
AP29622

TOP VIEW
LEFT FRONT-
AP29620

TOP VIEW
LEFT REAR-
AP29622

NOTE: CROSS-TIES REQUIRED
FOR STRAIGHT-ACTING JACKS
ON BOTH FRONT AND REAR.

NOTE: INSTALLATION MUST CONFORM TO GOOD SHOP PRACTICES, SAE
STANDARDS, RVIA STANDARDS, AND OTHER APPLICABLE STANDARDS.

LEVELING SYSTEM: AP43015

NO.	DATE	REVISION

THE INFORMATION DISCLOSED ON THIS DRAWING IS CON-
FIDENTIAL AND MUST NOT BE DISCLOSED OR USED IN ANY
MANNER WHICH WILL BE DETRIMENTAL TO THE HWH CORPORATION

HWH I-80 EXIT 267 SOUTH
RT 1 MOSCOW, IOWA 52760

SCALE 1:6 DATE 30JUN08 DRAWN BY .

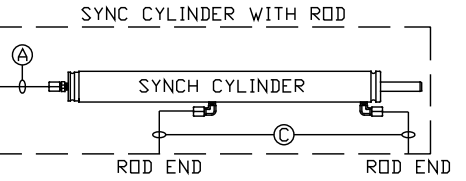
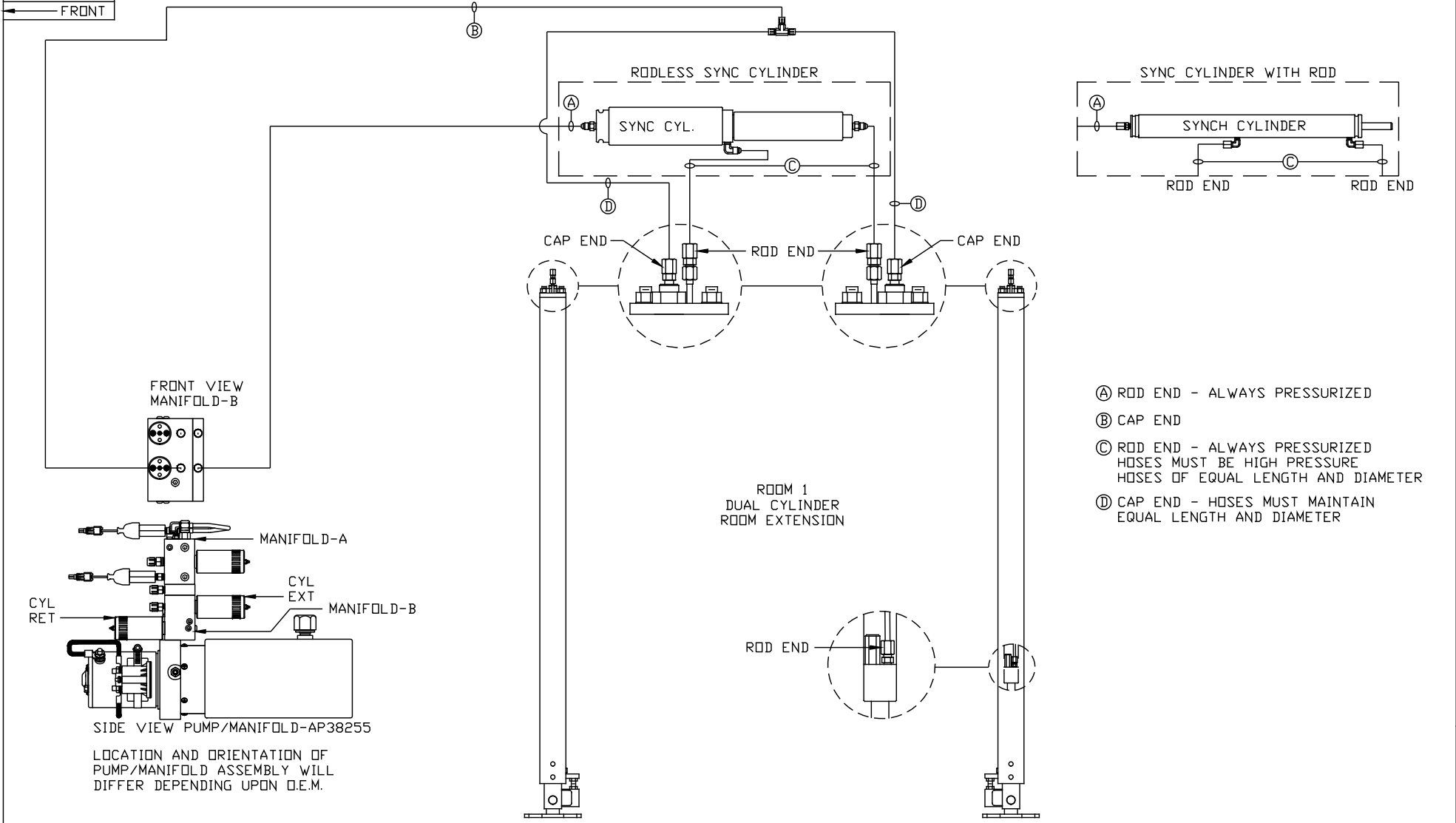
HYD CONN DIAGRAM

STUARTS

DRAWING NUMBER
MP70021 A/C

ORIENTATION

← FRONT

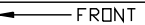


- (A) ROD END - ALWAYS PRESSURIZED
- (B) CAP END
- (C) ROD END - ALWAYS PRESSURIZED
HOSES MUST BE HIGH PRESSURE
HOSES OF EQUAL LENGTH AND DIAMETER
- (D) CAP END - HOSES MUST MAINTAIN
EQUAL LENGTH AND DIAMETER

NOTE: INSTALLATION MUST CONFORM TO GOOD SHOP PRACTICES, SAE STANDARDS, RVIA STANDARDS, AND OTHER APPLICABLE STANDARDS.

MP70021 B/C
30JUN08

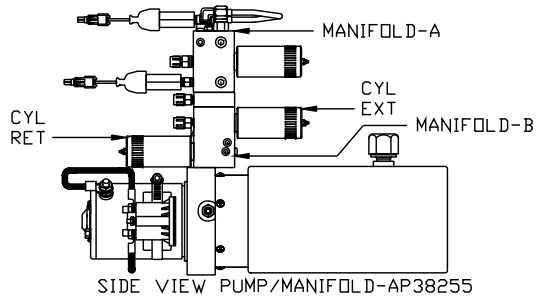
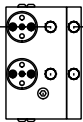
ORIENTATION



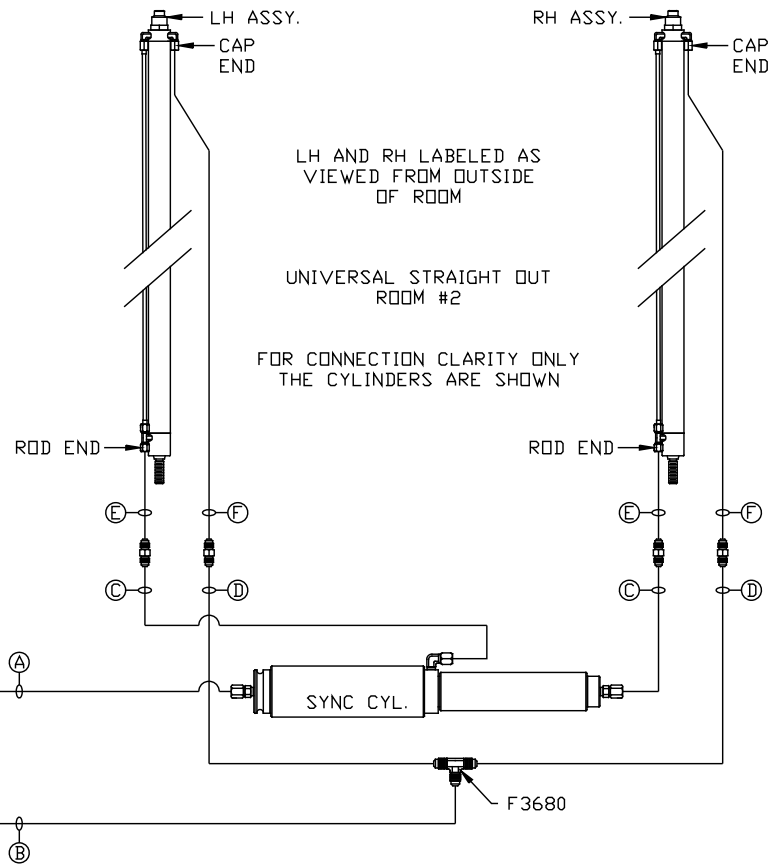
NOTE: HOSES ⑤ AND ⑥ ARE INCLUDED WITH THE ROOM EXTENSION MECHANISM

- ① ROD END - ALWAYS PRESSURIZED
- ② CAP END
- ③ ROD END - ALWAYS PRESSURIZED
HOSES MUST BE HIGH PRESSURE
HOSES OF EQUAL LENGTH AND DIAMETER
- ④ CAP END - HOSES MUST MAINTAIN
EQUAL LENGTH AND DIAMETER
- ⑤ ROD END - ALWAYS PRESSURIZED -
MUST BE HIGH PRESSURE HOSES OF
EQUAL LENGTH AND DIAMETER
- ⑥ CAP END - MUST MAINTAIN EQUAL
LENGTH AND DIAMETER

FRONT VIEW
MANIFOLD-B



LOCATION AND ORIENTATION OF
PUMP/MANIFOLD ASSEMBLY WILL
DIFFER DEPENDING UPON O.E.M.



NOTE: INSTALLATION MUST CONFORM TO GOOD SHOP PRACTICES, SAE STANDARDS, RVIA STANDARDS, AND OTHER APPLICABLE STANDARDS.

MP70021 C/C
30JUN08