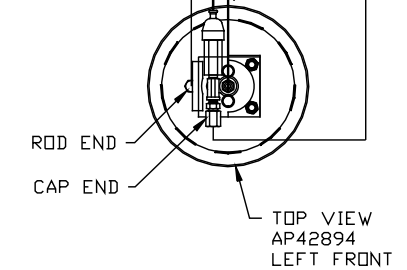
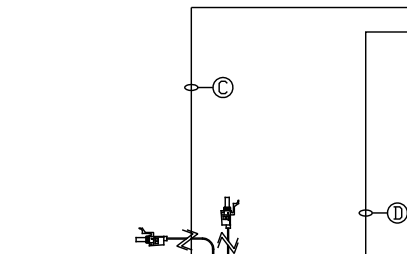
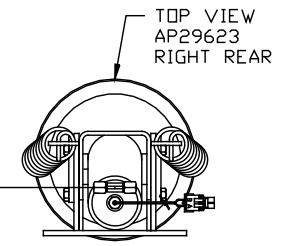
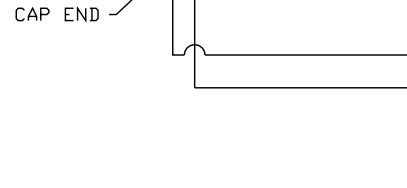
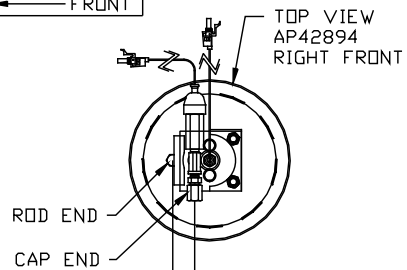
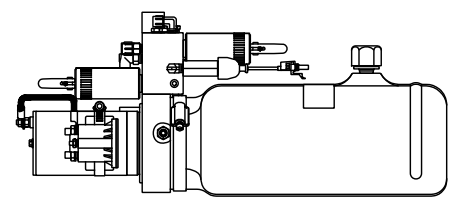
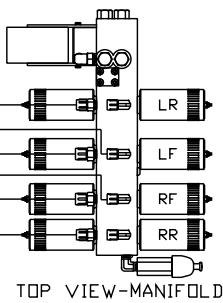


ORIENTATION
← FRONT



NOTE: CROSS TIES REQUIRED FOR FRONT AND REAR JACKS



SIDE VIEW PUMP/MANIFOLD-AP43063
LOCATION AND ORIENTATION OF PUMP/MANIFOLD ASSEMBLY WILL DIFFER DEPENDING UPON O.E.M.

- Ⓐ .25" ID HOSE - RF ROD END
 - Ⓑ .313" ID HOSE - RF CAP END
 - Ⓒ .25" ID HOSE - LF ROD END
 - Ⓓ .313" ID HOSE - RF CAP END
 - Ⓔ .25" ID HOSE - RR CAP END
 - Ⓕ .25" ID HOSE - LR CAP END
- NOTE: HOSES NOT INCLUDED

NOTE: INSTALLATION MUST CONFORM TO GOOD SHOP PRACTICES, SAE STANDARDS, RVIA STANDARDS, AND OTHER APPLICABLE STANDARDS.

LEVELING SYSTEM: AP43035

NO.	DATE	REVISION
THE INFORMATION DISCLOSED ON THIS DRAWING IS CONFIDENTIAL AND MUST NOT BE DISCLOSED OR USED IN ANY MANNER WHICH WILL BE DETRIMENTAL TO THE HWH CORPORATION		

HWH I-80 EXIT 267 SOUTH
RT 1 MOSCOW, IOWA 52760

SCALE 1:6 DATE 02JUL08 DRAWN BY .

HYD CONN DIAGRAM

STUARTS

DRAWING NUMBER MP70028