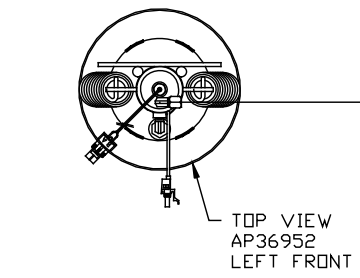
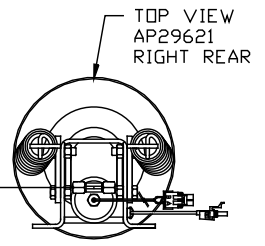
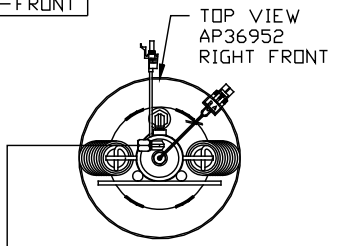
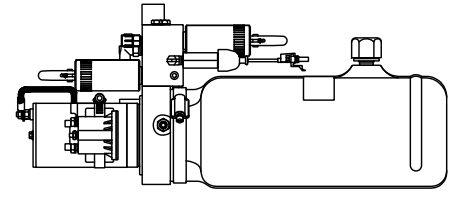
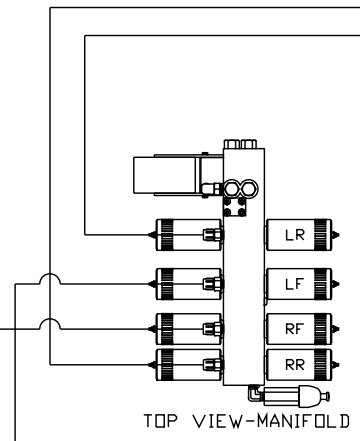


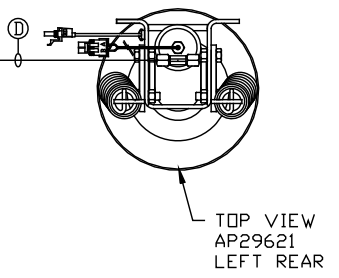
ORIENTATION
← FRONT



NOTE: CROSS TIES REQUIRED FOR FRONT AND REAR JACKS



LOCATION AND ORIENTATION OF PUMP/MANIFOLD ASSEMBLY WILL DIFFER DEPENDING UPON O.E.M.



- Ⓐ AP4827 HOSE ASSY .25" X 144"
- Ⓑ AP1412 HOSE ASSY .25" X 84"
- Ⓒ AP4163 HOSE ASSY .25" X 360"
- Ⓓ AP2464 HOSE ASSY .25" X 324"

NOTE: INSTALLATION MUST CONFORM TO GOOD SHOP PRACTICES, SAE STANDARDS, RVIA STANDARDS, AND OTHER APPLICABLE STANDARDS.

LEVELING SYSTEM: AP43238

NO.	DATE	REVISION

THE INFORMATION DISCLOSED ON THIS DRAWING IS CONFIDENTIAL AND MUST NOT BE DISCLOSED OR USED IN ANY MANNER WHICH WILL BE DETRIMENTAL TO THE HWH CORPORATION

HWH			I-80 EXIT 267 SOUTH RT 1 MOSCOW, IOWA 52760		
SCALE 1:6	DATE 28JUL08	DRAWN BY .			
HYD CONN DIAGRAM					
HWH GENERIC				DRAWING NUMBER MP70033	