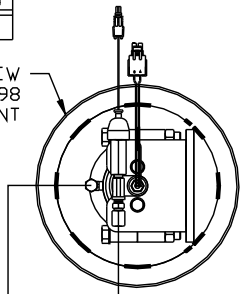


ORIENTATION

← FRONT

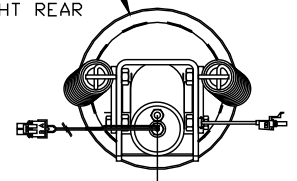
TOP VIEW
AP43998
RIGHT FRONT



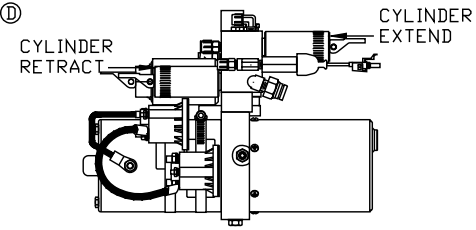
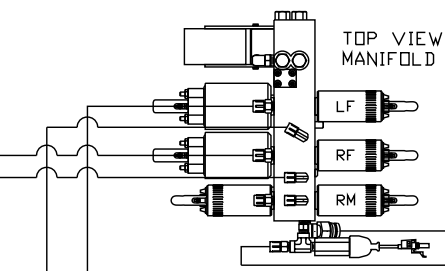
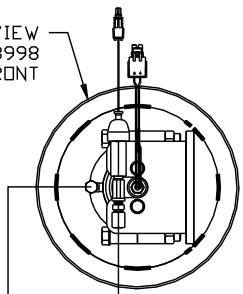
- Ⓐ HOSE ASSY .25" ID
ROD END RIGHT FRONT JACK
- Ⓑ HOSE ASSY .25/05
CAP END RIGHT FRONT JACK
- Ⓒ HOSE ASSY .25" ID
ROD END LEFT FRONT JACK
- Ⓓ HOSE ASSY .25/05
CAP END LEFT FRONT JACK

- Ⓔ HOSE ASSY .25" ID
CAP END LEFT REAR JACK
- Ⓕ HOSE ASSY .25" ID
CAP END RIGHT REAR JACK
- Ⓖ HOSE ASSY .25" ID
PRESSURE
- Ⓗ RETURN LINE .5"
RETURN

TOP VIEW
AP43876
RIGHT REAR

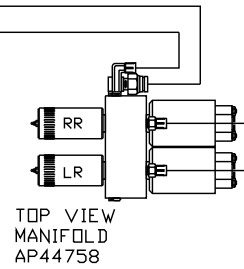


TOP VIEW
AP43998
LEFT FRONT



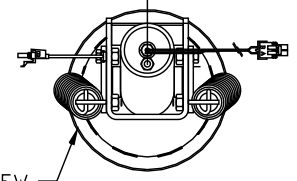
SIDE VIEW PUMP/MANIFOLD-AP46592

LOCATION AND ORIENTATION OF
PUMP/MANIFOLD ASSEMBLY WILL
DIFFER DEPENDING UPON O.E.M.



TOP VIEW
MANIFOLD
AP44758

TOP VIEW
AP43876
LEFT REAR



NOTE: INSTALLATION MUST CONFORM TO GOOD SHOP PRACTICES, SAE STANDARDS, RVIA STANDARDS, AND OTHER APPLICABLE STANDARDS.

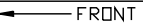
LEVELING SYSTEM: AP46529

NO.	DATE	REVISION

THE INFORMATION DISCLOSED ON THIS DRAWING IS CONFIDENTIAL AND MUST NOT BE DISCLOSED OR USED IN ANY MANNER WHICH WILL BE DETRIMENTAL TO THE HWH CORPORATION

HWH			I-80 EXIT 267 SOUTH RT 1 MOSCOW, IOWA 52760	
SCALE 1:6	DATE 04MAY10	DRAWN BY .		
HYD CONN DIAGRAM				
ROLLINGSTAR			DRAWING NUMBER MP70270 A/B	

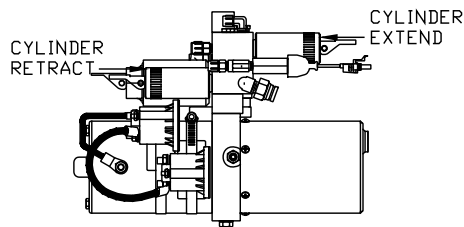
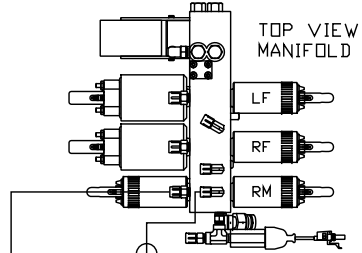
ORIENTATION



- (A) .25" ID HOSE ASSY
ROD END - ALWAYS PRESSURIZED
- (B) .25" ID HOSE ASSY
CAP END (ROOM)
- (C) .25" ID HOSE ASSY
ROD END - ALWAYS PRESSURIZED (LIFT)
- (D) .25" ID HOSE ASSY
CAP END (ROOM)
- (E) .25" ID HOSE ASSY
CAP END (LIFT)
- (F) .25" ID HOSE ASSY
CAP END (ROOM)

NOTE: HOSES (I) AND (J) ARE INCLUDED
WITH THE ROOM EXTENSION MECHANISM

- (G) .125" ID HIGH PRESSURE HOSE ASSY
ROD END - ALWAYS PRESSURIZED
HOSES MUST BE HIGH PRESSURE
HOSES OF EQUAL LENGTH AND DIAMETER
- (H) .25" ID HOSE ASSY
CAP END - HOSES MUST MAINTAIN
EQUAL LENGTH AND DIAMETER
- (I) AP24632 HOSE ASSY HWH02HP x 48"
ROD END - ALWAYS PRESSURIZED -
MUST BE HIGH PRESSURE HOSES OF
EQUAL LENGTH AND DIAMETER
- (J) AP24818 HOSE ASSY HWH02HP x 86"
CAP END - MUST MAINTAIN EQUAL
LENGTH AND DIAMETER
- (K) .25" ID HOSE ASSY CAP END (LIFT)
MUST MAINTAIN EQUAL LENGTH
AND DIAMETER
- (L) .25" ID HOSE ASSY ROD END (LIFT)
ALWAYS PRESSURIZED - MUST MAINTAIN
EQUAL LENGTH AND DIAMETER

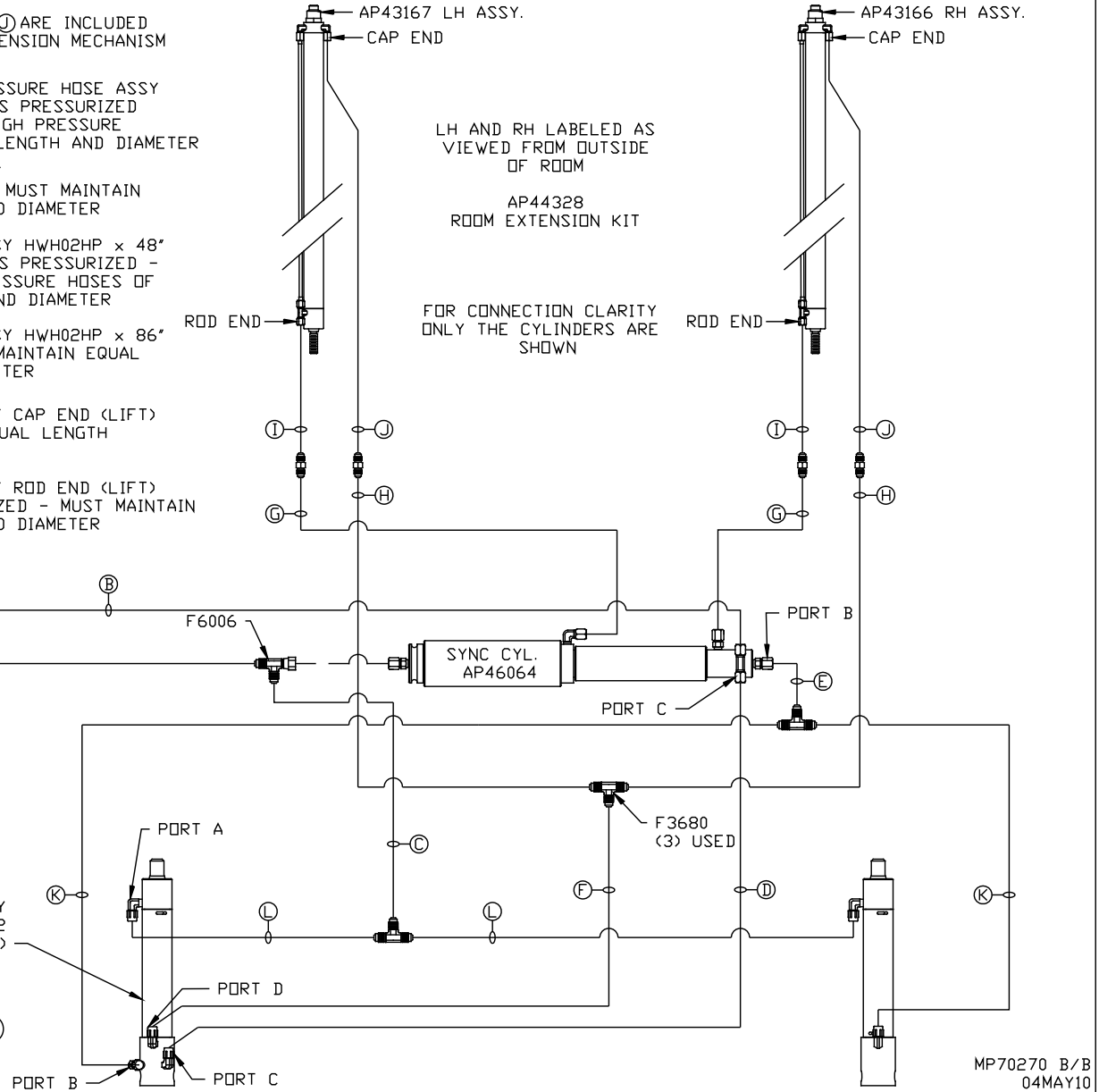


SIDE VIEW PUMP/MANIFOLD-AP46592

LOCATION AND ORIENTATION OF
PUMP/MANIFOLD ASSEMBLY WILL
DIFFER DEPENDING UPON O.E.M.

NOTE: GENERIC VIEWS FOR CLARITY. CYLINDERS MAY BE REVERSED

NOTE: INSTALLATION MUST CONFORM TO GOOD SHOP PRACTICES, SAE
STANDARDS, RVIA STANDARDS, AND OTHER APPLICABLE STANDARDS.



LH AND RH LABELED AS
VIEWED FROM OUTSIDE
OF ROOM

AP44328
ROOM EXTENSION KIT

FOR CONNECTION CLARITY
ONLY THE CYLINDERS ARE
SHOWN