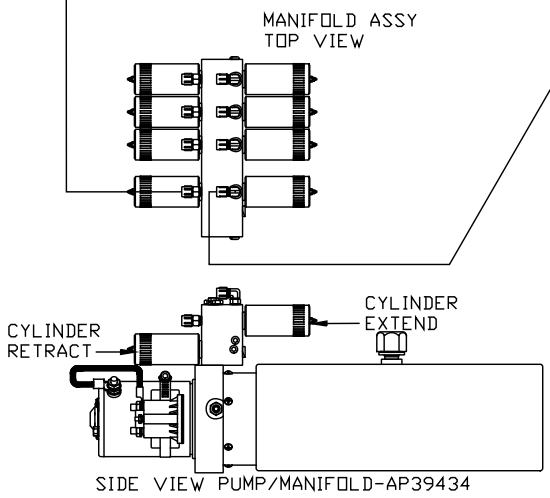
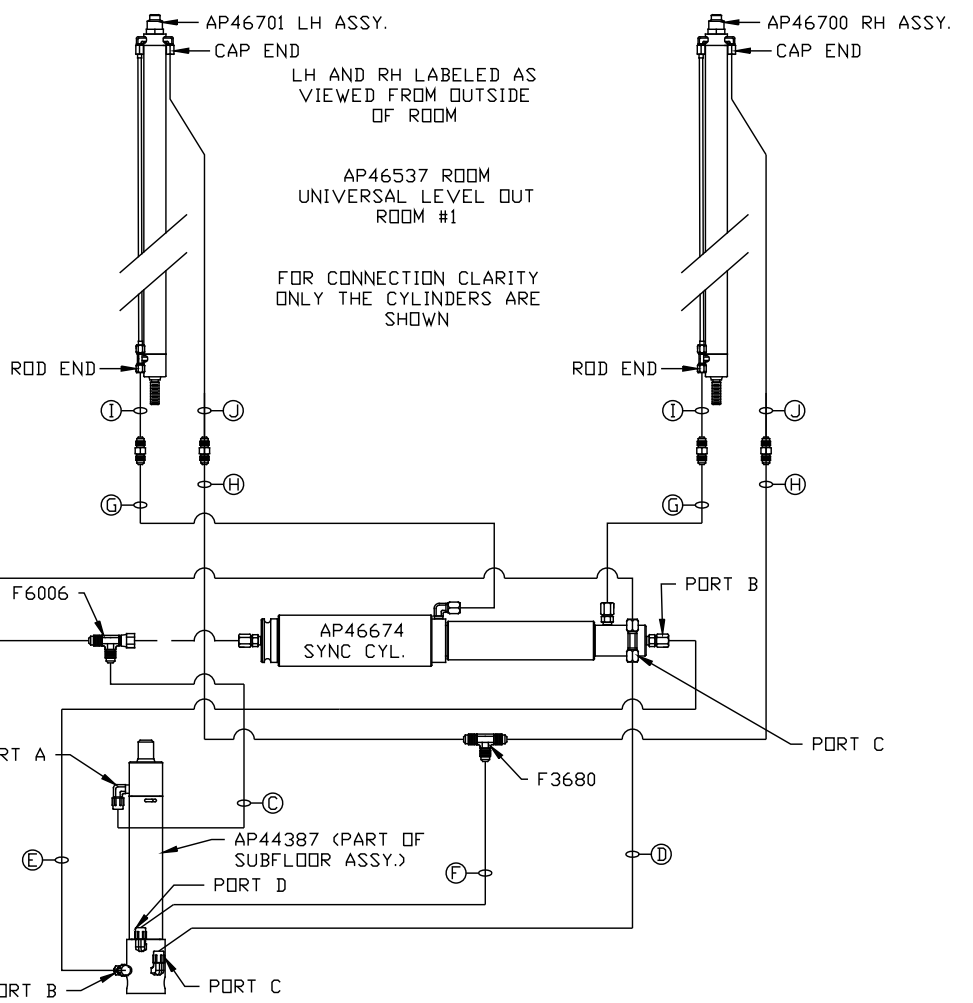


NOTE: HOSES ① AND ② ARE INCLUDED WITH THE ROOM EXTENSION MECHANISM

- Ⓐ HOSE ASSY .25" ID  
ROD END - ALWAYS PRESSURIZED
- Ⓑ HOSE ASSY .25" ID  
CAP END (ROOM)
- Ⓒ HOSE ASSY .25" ID  
ROD END - ALWAYS PRESSURIZED (LIFT)
- Ⓓ HOSE ASSY .25" ID  
CAP END (ROOM)
- Ⓔ HOSE ASSY .25" ID  
CAP END (LIFT)
- Ⓕ HOSE ASSY .25" ID  
CAP END (ROOM)

- Ⓖ HOSE ASSY .125" ID HP  
ROD END - ALWAYS PRESSURIZED  
HOSES MUST BE HIGH PRESSURE  
HOSES OF EQUAL LENGTH AND DIAMETER
- Ⓗ HOSE ASSY .25" ID  
CAP END - HOSES MUST MAINTAIN  
EQUAL LENGTH AND DIAMETER
- ① AP24632 HOSE ASSY HWH02HP x 48'  
ROD END - ALWAYS PRESSURIZED -  
MUST BE HIGH PRESSURE HOSES OF  
EQUAL LENGTH AND DIAMETER
- ② AP24818 HOSE ASSY HWH02HP x 86'  
CAP END - MUST MAINTAIN EQUAL  
LENGTH AND DIAMETER

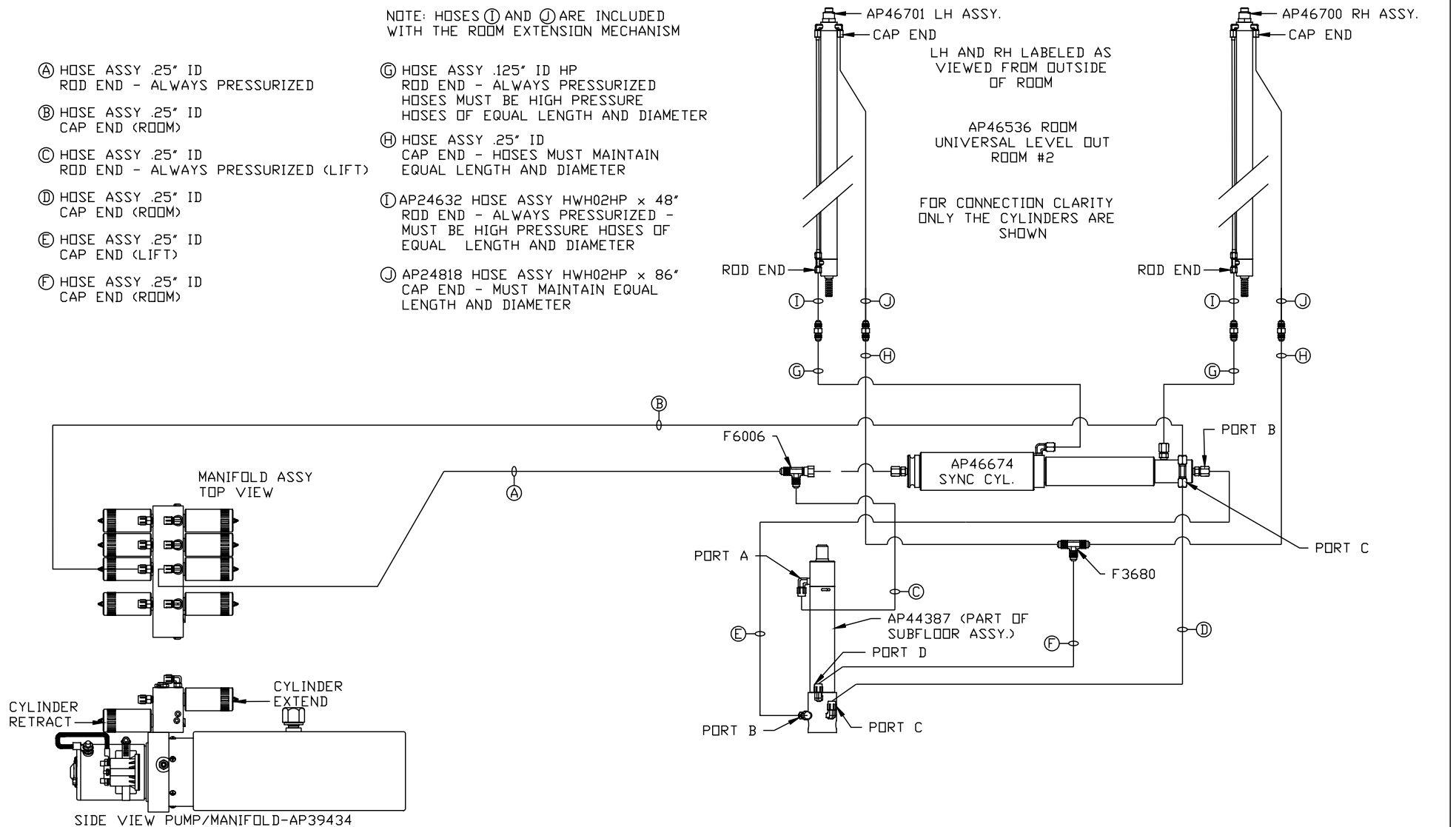


		HWH I-80 EXIT 267 SOUTH RT 1 MOSCOW, IOWA 52760	
		SCALE 1:6	DATE 30JUN10
		DRAWN BY .	
HYD CONN DIAGRAM			
NO.	DATE	REVISION	
THE INFORMATION DISCLOSED ON THIS DRAWING IS CONFIDENTIAL AND MUST NOT BE DISCLOSED OR USED IN ANY MANNER WHICH WILL BE DETRIMENTAL TO THE HWH CORPORATION			
ALUMINUM TRAILER			DRAWING NUMBER MP70293 A/D

NOTE: INSTALLATION MUST CONFORM TO GOOD SHOP PRACTICES, SAE STANDARDS, RVIA STANDARDS, AND OTHER APPLICABLE STANDARDS. CONTROL PACKAGE: AP46534

- Ⓐ HOSE ASSY .25" ID  
ROD END - ALWAYS PRESSURIZED
- Ⓑ HOSE ASSY .25" ID  
CAP END (ROOM)
- Ⓒ HOSE ASSY .25" ID  
ROD END - ALWAYS PRESSURIZED (LIFT)
- Ⓓ HOSE ASSY .25" ID  
CAP END (ROOM)
- Ⓔ HOSE ASSY .25" ID  
CAP END (LIFT)
- Ⓕ HOSE ASSY .25" ID  
CAP END (ROOM)

- NOTE: HOSES Ⓘ AND ⓷ ARE INCLUDED WITH THE ROOM EXTENSION MECHANISM
- Ⓖ HOSE ASSY .125" ID HP  
ROD END - ALWAYS PRESSURIZED  
HOSES MUST BE HIGH PRESSURE  
HOSES OF EQUAL LENGTH AND DIAMETER
  - Ⓡ HOSE ASSY .25" ID  
CAP END - HOSES MUST MAINTAIN  
EQUAL LENGTH AND DIAMETER
  - Ⓘ AP24632 HOSE ASSY HWH02HP x 48'  
ROD END - ALWAYS PRESSURIZED -  
MUST BE HIGH PRESSURE HOSES OF  
EQUAL LENGTH AND DIAMETER
  - ⓷ AP24818 HOSE ASSY HWH02HP x 86'  
CAP END - MUST MAINTAIN EQUAL  
LENGTH AND DIAMETER



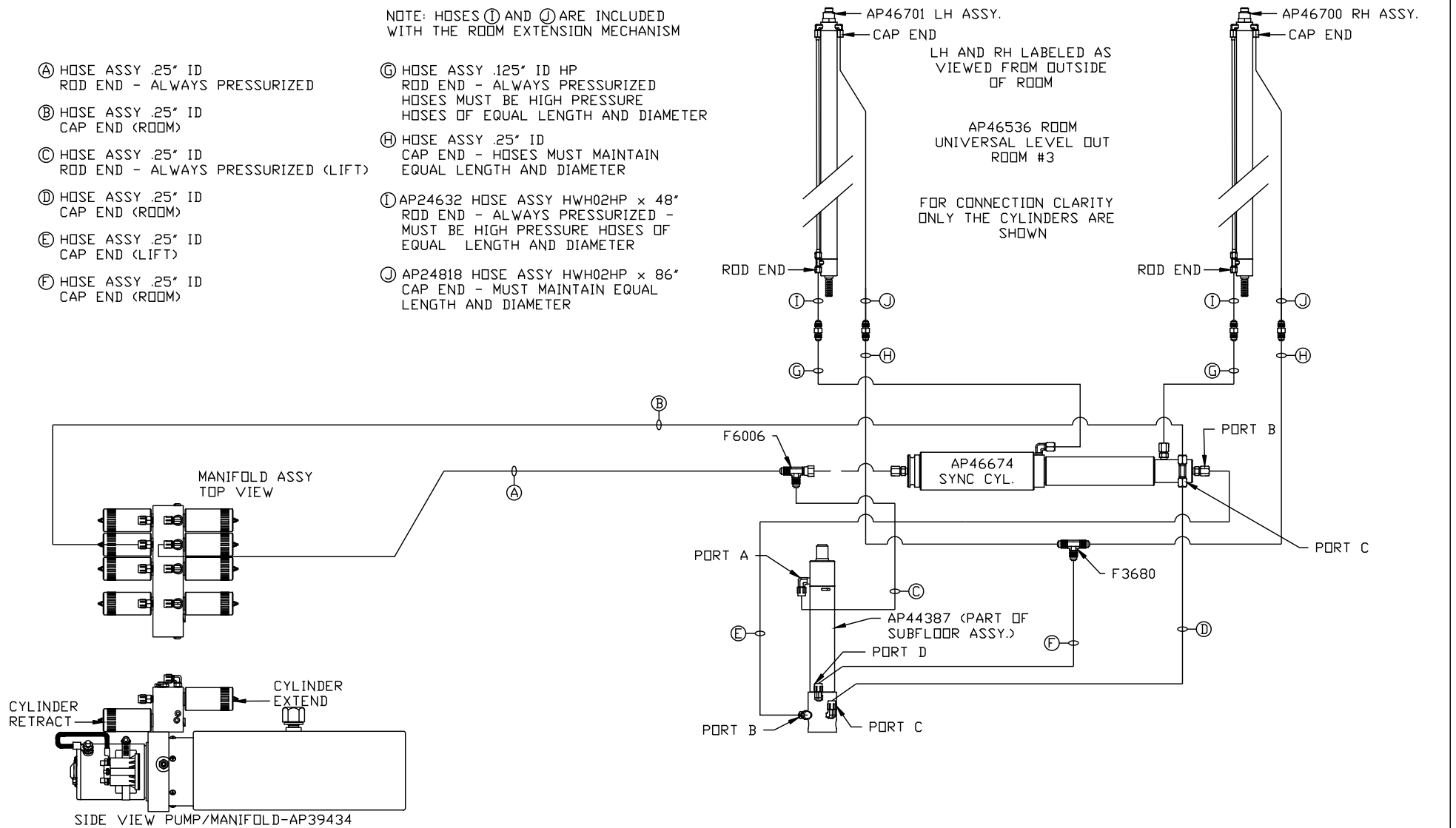
NOTE: INSTALLATION MUST CONFORM TO GOOD SHOP PRACTICES, SAE STANDARDS, RVIA STANDARDS, AND OTHER APPLICABLE STANDARDS.

MP70293 B/D  
30JUN10

- Ⓐ HOSE ASSY .25" ID  
ROD END - ALWAYS PRESSURIZED
- Ⓑ HOSE ASSY .25" ID  
CAP END (ROOM)
- Ⓒ HOSE ASSY .25" ID  
ROD END - ALWAYS PRESSURIZED (LIFT)
- Ⓓ HOSE ASSY .25" ID  
CAP END (ROOM)
- Ⓔ HOSE ASSY .25" ID  
CAP END (LIFT)
- Ⓕ HOSE ASSY .25" ID  
CAP END (ROOM)

NOTE: HOSES Ⓘ AND Ⓧ ARE INCLUDED WITH THE ROOM EXTENSION MECHANISM

- Ⓖ HOSE ASSY .125" ID HP  
ROD END - ALWAYS PRESSURIZED  
HOSES MUST BE HIGH PRESSURE  
HOSES OF EQUAL LENGTH AND DIAMETER
- Ⓗ HOSE ASSY .25" ID  
CAP END - HOSES MUST MAINTAIN  
EQUAL LENGTH AND DIAMETER
- Ⓛ AP24632 HOSE ASSY HWH02HP x 48'  
ROD END - ALWAYS PRESSURIZED -  
MUST BE HIGH PRESSURE HOSES OF  
EQUAL LENGTH AND DIAMETER
- Ⓧ AP24818 HOSE ASSY HWH02HP x 86'  
CAP END - MUST MAINTAIN EQUAL  
LENGTH AND DIAMETER



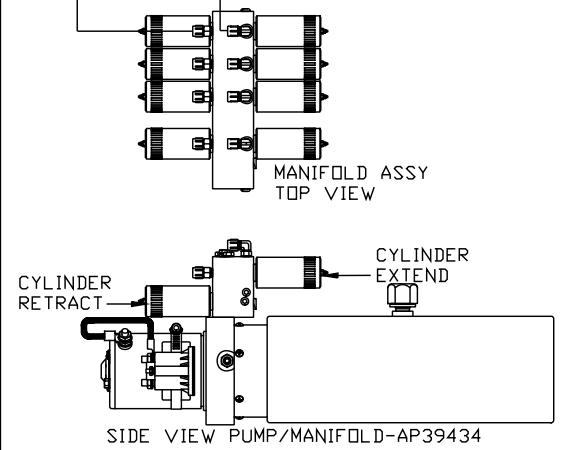
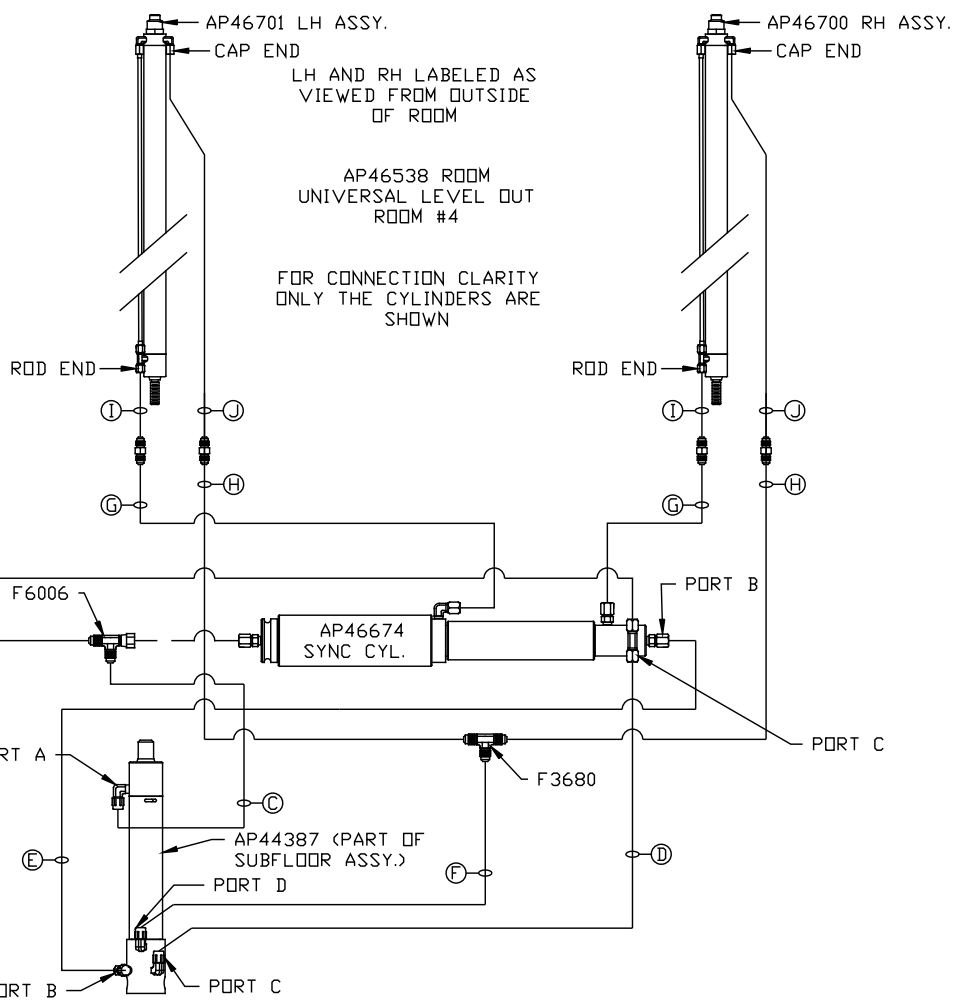
NOTE: INSTALLATION MUST CONFORM TO GOOD SHOP PRACTICES, SAE STANDARDS, RVIA STANDARDS, AND OTHER APPLICABLE STANDARDS.

MP70293 C/D  
30JUN10

NOTE: HOSES ① AND ② ARE INCLUDED WITH THE ROOM EXTENSION MECHANISM

- Ⓐ HOSE ASSY .25" ID  
ROD END - ALWAYS PRESSURIZED
- Ⓑ HOSE ASSY .25" ID  
CAP END (ROOM)
- Ⓒ HOSE ASSY .25" ID  
ROD END - ALWAYS PRESSURIZED (LIFT)
- Ⓓ HOSE ASSY .25" ID  
CAP END (ROOM)
- Ⓔ HOSE ASSY .25" ID  
CAP END (LIFT)
- Ⓕ HOSE ASSY .25" ID  
CAP END (ROOM)

- Ⓖ HOSE ASSY .125" ID HP  
ROD END - ALWAYS PRESSURIZED  
HOSES MUST BE HIGH PRESSURE  
HOSES OF EQUAL LENGTH AND DIAMETER
- Ⓗ HOSE ASSY .25" ID  
CAP END - HOSES MUST MAINTAIN  
EQUAL LENGTH AND DIAMETER
- ① AP24632 HOSE ASSY HWH02HP x 48'  
ROD END - ALWAYS PRESSURIZED -  
MUST BE HIGH PRESSURE HOSES OF  
EQUAL LENGTH AND DIAMETER
- ② AP24818 HOSE ASSY HWH02HP x 86'  
CAP END - MUST MAINTAIN EQUAL  
LENGTH AND DIAMETER



NOTE: INSTALLATION MUST CONFORM TO GOOD SHOP PRACTICES, SAE STANDARDS, RVIA STANDARDS, AND OTHER APPLICABLE STANDARDS.