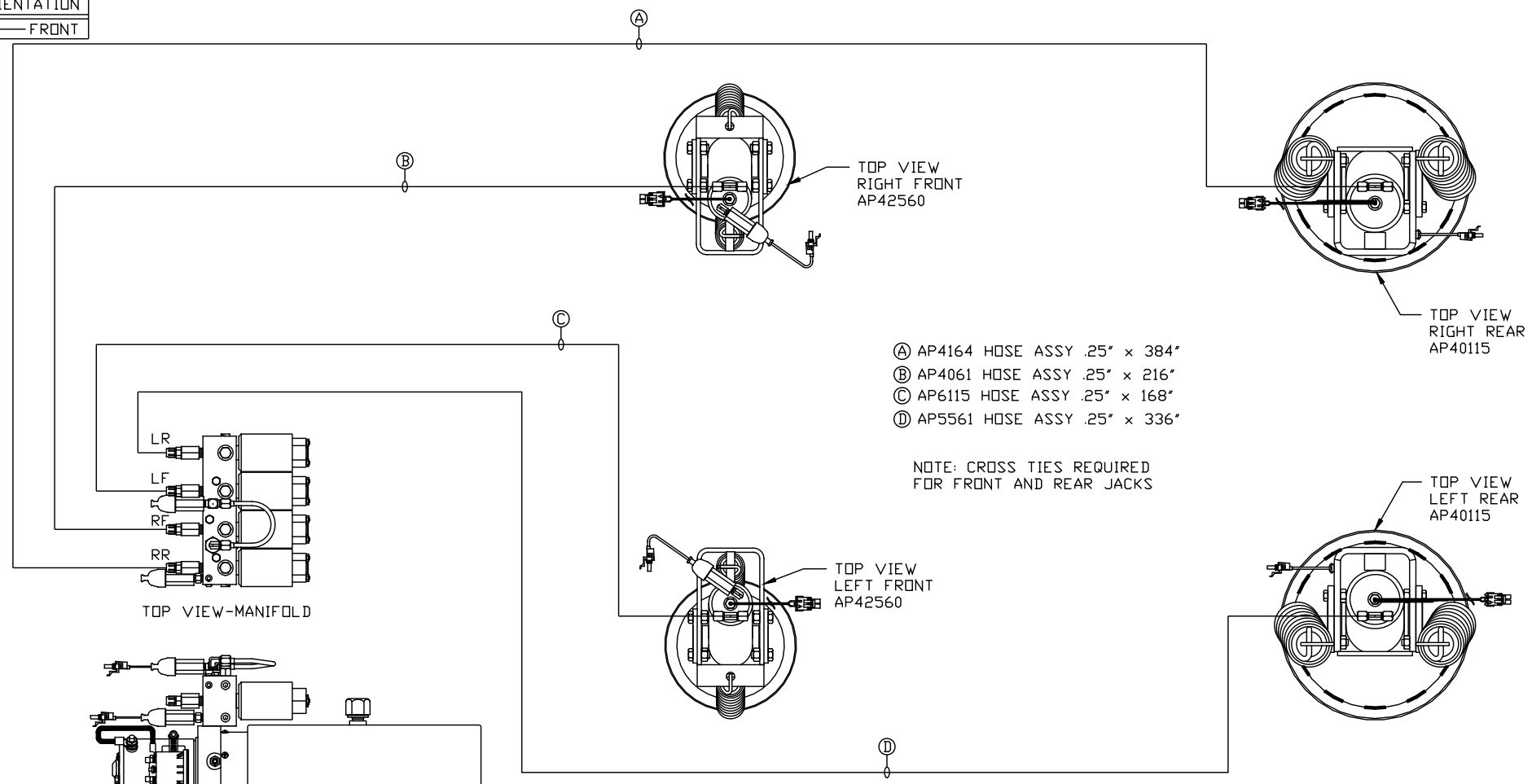
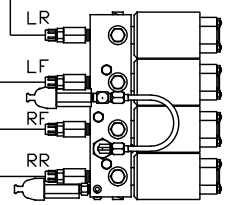


ORIENTATION  
 ← FRONT

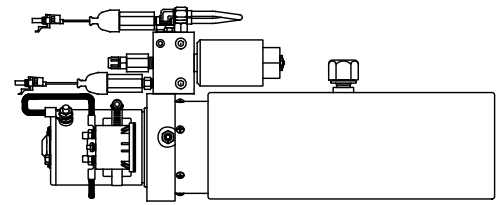


- Ⓐ AP4164 HOSE ASSY .25" x 384"
- Ⓑ AP4061 HOSE ASSY .25" x 216"
- Ⓒ AP6115 HOSE ASSY .25" x 168"
- Ⓓ AP5561 HOSE ASSY .25" x 336"

NOTE: CROSS TIES REQUIRED FOR FRONT AND REAR JACKS



TOP VIEW-MANIFOLD



SIDE VIEW PUMP/MANIFOLD-AP36195

LOCATION AND ORIENTATION OF PUMP/MANIFOLD ASSEMBLY WILL DIFFER DEPENDING UPON O.E.M.

NOTE: INSTALLATION MUST CONFORM TO GOOD SHOP PRACTICES, SAE STANDARDS, RVIA STANDARDS, AND OTHER APPLICABLE STANDARDS.

LEVELING SYSTEM: AP46979

NO.	DATE	REVISION

THE INFORMATION DISCLOSED ON THIS DRAWING IS CONFIDENTIAL AND MUST NOT BE DISCLOSED OR USED IN ANY MANNER WHICH WILL BE DETRIMENTAL TO THE HWH CORPORATION

<b>HWH</b>		I-80 EXIT 267 SOUTH RT 1 MOSCOW, IOWA 52760	
SCALE 1:6	DATE 07JUL10	DRAWN BY .	
HYD CONN DIAGRAM			
QUALITY VANS		DRAWING NUMBER MP70301	