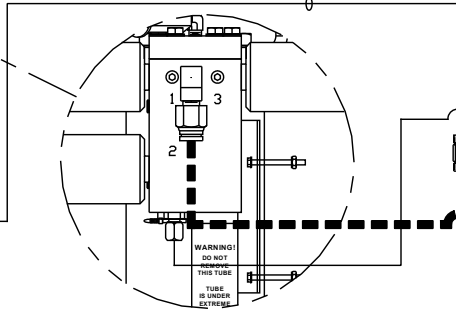
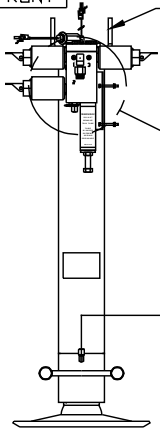


ORIENTATION

← FRONT

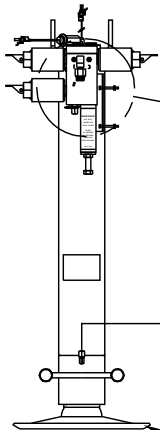
FRONT VIEW  
AP47338  
RIGHT FRONT



WARNING!  
DO NOT  
REMOVE  
THIS TUBE  
TUBE IS UNDER  
EXTREME

WARNING!  
DO NOT  
REMOVE  
THIS TUBE  
TUBE IS UNDER  
EXTREME

FRONT VIEW  
AP47338  
LEFT FRONT



- Ⓐ AP4159 HOSE ASSY .25" x 72"
- Ⓑ AP4073 HOSE ASSY .25" x 60"
- Ⓒ AP4159 HOSE ASSY .25" x 72"
- Ⓓ AP4073 HOSE ASSY .25" x 60"
- Ⓔ AP4159 HOSE ASSY .25" x 72"
- Ⓕ AP7177 HOSE ASSY .25" x 70"
- Ⓖ AP4075 HOSE ASSY .25" x 42"
- Ⓗ AP4218 HOSE ASSY .25" x 40"

F3680 (6) USED

F38743  
(3) USED

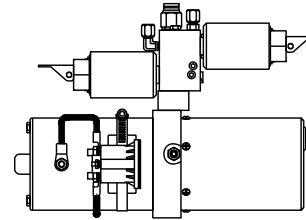
M401501 TUBING  
CUT TO LENGTH

NOT USED

REF "B" SHEET

TO REAR  
TEE  
FITTINGS

SIDE VIEW PUMP/MANIFOLD-AP47038



NOTE: INSTALLATION MUST CONFORM TO GOOD SHOP PRACTICES, SAE STANDARDS, RVIA STANDARDS, AND OTHER APPLICABLE STANDARDS.

LEVELING SYSTEM: AP47261

NO.	DATE	REVISION
1	09NOV10	REVISED HOSES

THE INFORMATION DISCLOSED ON THIS DRAWING IS CONFIDENTIAL AND MUST NOT BE DISCLOSED OR USED IN ANY MANNER WHICH WILL BE DETRIMENTAL TO THE HWH CORPORATION

HWH I-80 EXIT 267 SOUTH  
RT 1 MOSCOW, IOWA 52760

SCALE DATE 19OCT10 DRAWN BY .

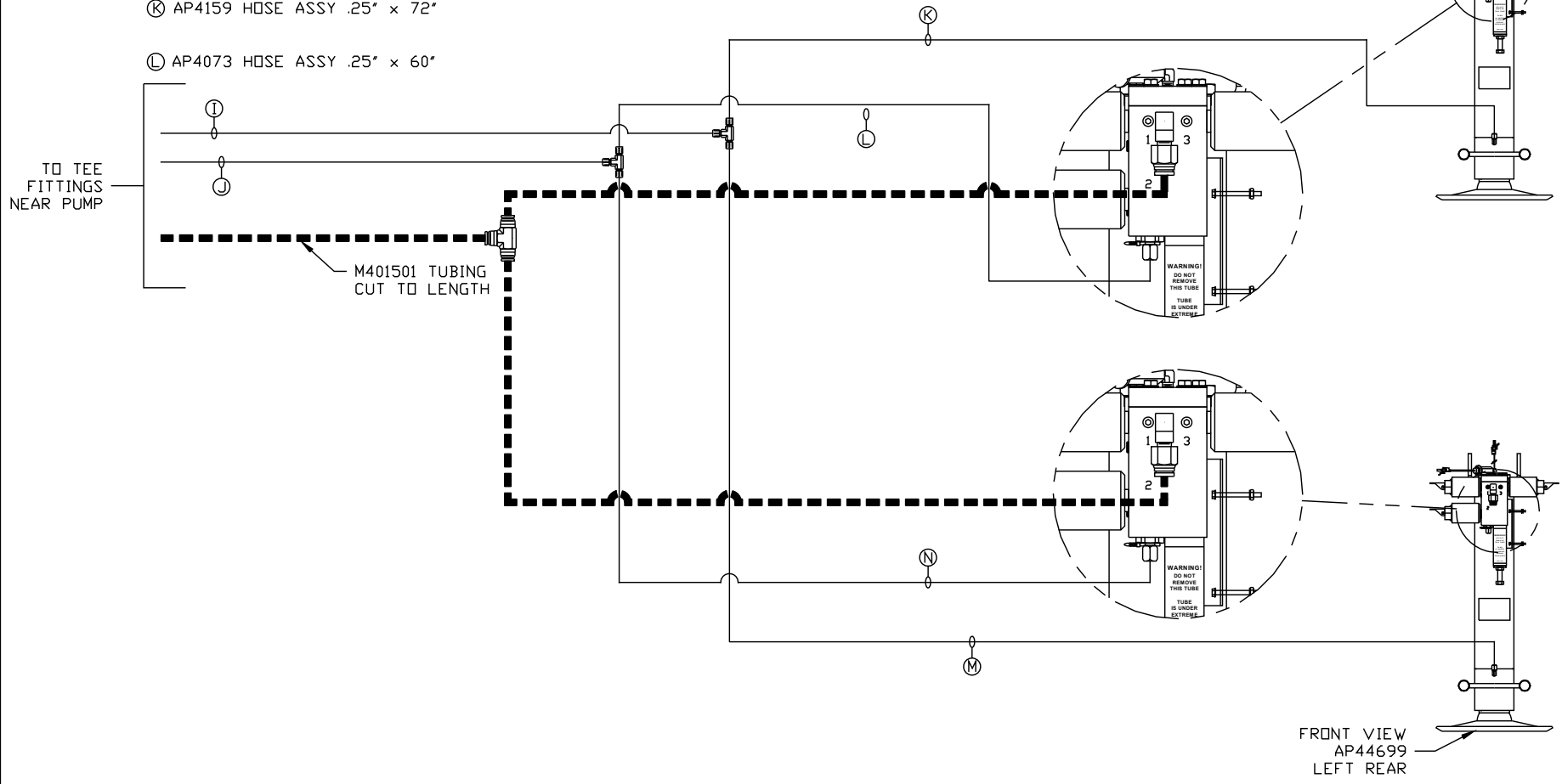
HYD CONN DIAGRAM

OSHKOSH

DRAWING NUMBER  
MP70326 A/B

ORIENTATION  
 ← FRONT

- ① AP10225 HOSE ASSY .25" x 340"
- ② AP5561 HOSE ASSY .25" x 336"
- ③ AP4159 HOSE ASSY .25" x 72"
- ④ AP4073 HOSE ASSY .25" x 60"
- Ⓜ AP4159 HOSE ASSY .25" x 72"
- Ⓝ AP4073 HOSE ASSY .25" x 60"



NOTE: INSTALLATION MUST CONFORM TO GOOD SHOP PRACTICES, SAE STANDARDS, RVIA STANDARDS, AND OTHER APPLICABLE STANDARDS.

MP70326 B/B  
 09NOV10