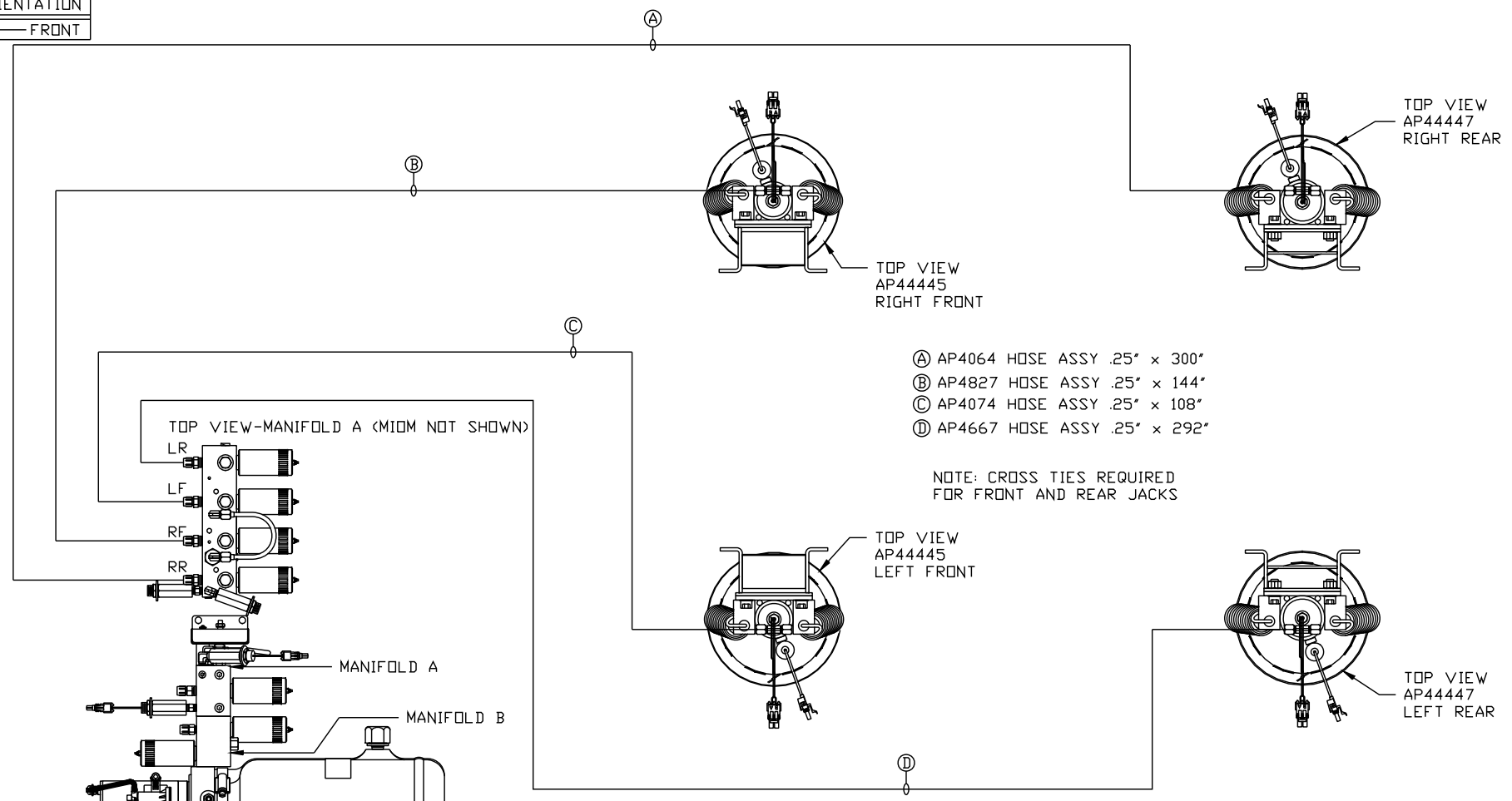
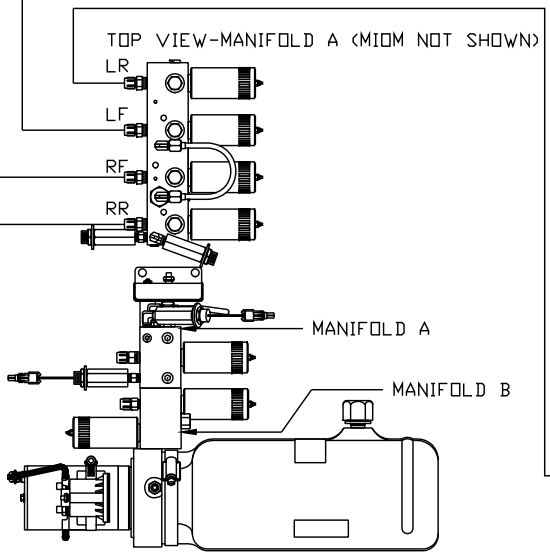


ORIENTATION  
← FRONT



- Ⓐ AP4064 HOSE ASSY .25" x 300"
- Ⓑ AP4827 HOSE ASSY .25" x 144"
- Ⓒ AP4074 HOSE ASSY .25" x 108"
- Ⓓ AP4667 HOSE ASSY .25" x 292"

NOTE: CROSS TIES REQUIRED FOR FRONT AND REAR JACKS



SIDE VIEW PUMP/MANIFOLD-AP47686

LOCATION AND ORIENTATION OF PUMP/MANIFOLD ASSEMBLY WILL DIFFER DEPENDING UPON O.E.M.

NOTE: INSTALLATION MUST CONFORM TO GOOD SHOP PRACTICES, SAE STANDARDS, RVIA STANDARDS, AND OTHER APPLICABLE STANDARDS.

PUMP KIT: AP47685  
LEVELING SYSTEM: AP47683

NO.	DATE	REVISION

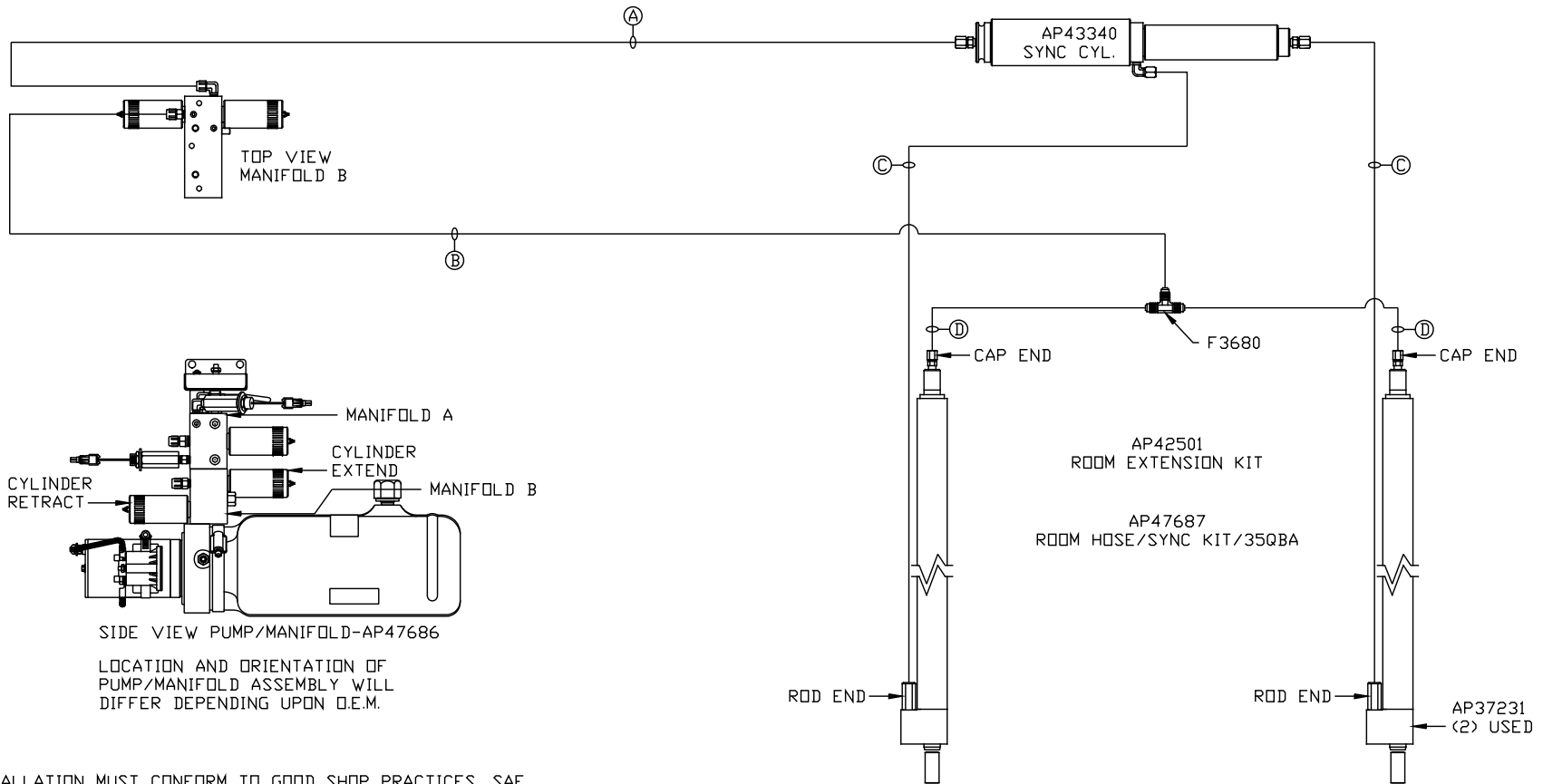
THE INFORMATION DISCLOSED ON THIS DRAWING IS CONFIDENTIAL AND MUST NOT BE DISCLOSED OR USED IN ANY MANNER WHICH WILL BE DETRIMENTAL TO THE HWH CORPORATION

<b>HWH</b>		I-80 EXIT 267 SOUTH RT 1 MOSCOW, IOWA 52760	
SCALE 1:6	DATE 20JAN11	DRAWN BY .	
HYD CONN DIAGRAM			
TIFFIN		DRAWING NUMBER MP70356 A/B	

ORIENTATION

← FRONT

- Ⓐ AP4065 HOSE ASSY .25" x 156"  
ROD END - ALWAYS PRESSURIZED
- Ⓑ AP4159 HOSE ASSY .25" x 72"  
CAP END
- Ⓒ AP24651 HOSE ASSY HWH02HP x 180"  
ROD END - ALWAYS PRESSURIZED  
HOSES MUST BE HIGH PRESSURE  
HOSES OF EQUAL LENGTH AND DIAMETER
- Ⓓ AP5352 HOSE ASSY .25" x 96"  
CAP END - HOSES MUST MAINTAIN  
EQUAL LENGTH AND DIAMETER



NOTE: INSTALLATION MUST CONFORM TO GOOD SHOP PRACTICES, SAE STANDARDS, RVIA STANDARDS, AND OTHER APPLICABLE STANDARDS.

MP70356 B/B  
20JAN11