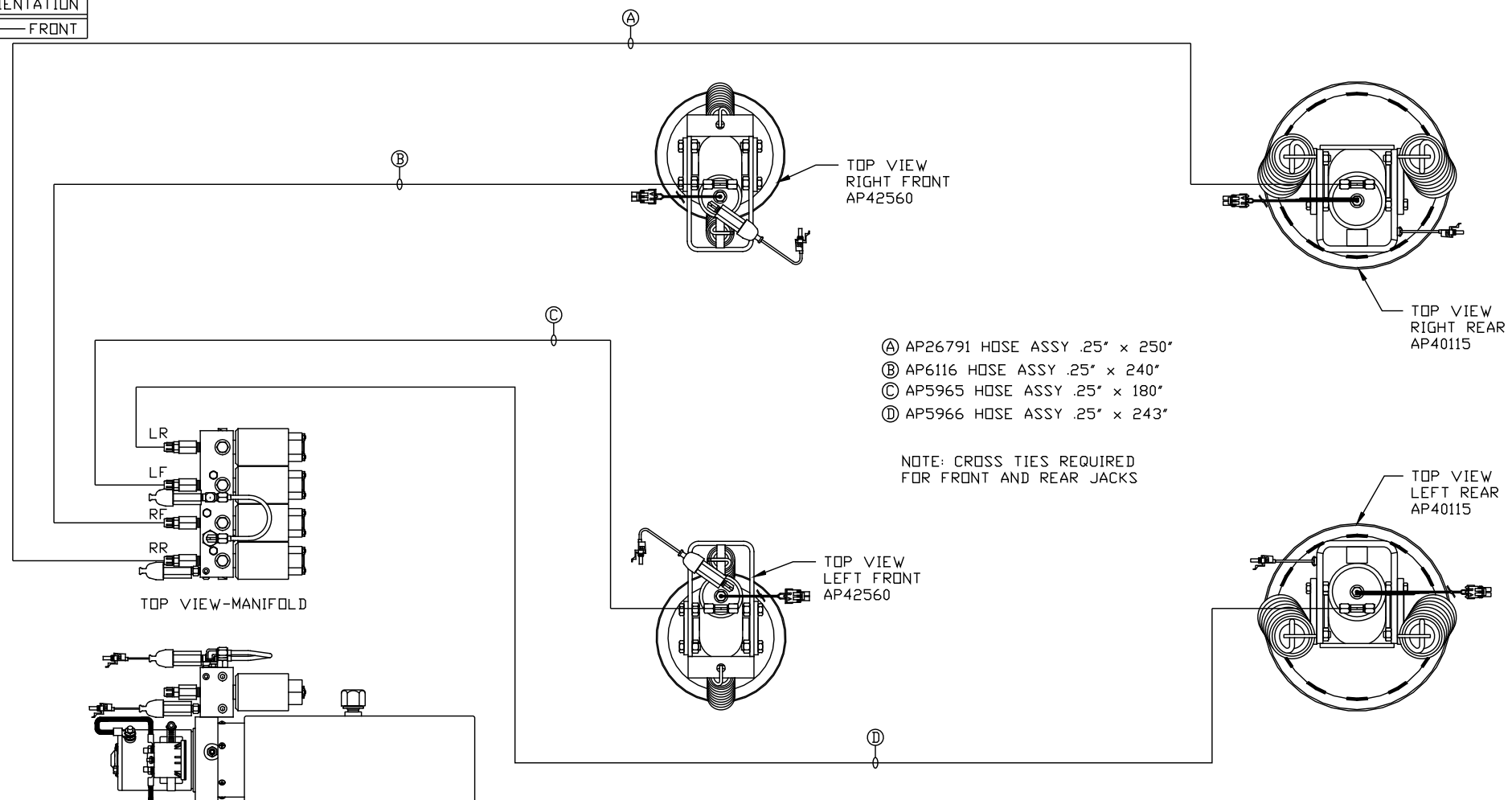
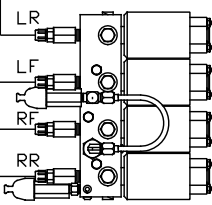


ORIENTATION
 ← FRONT

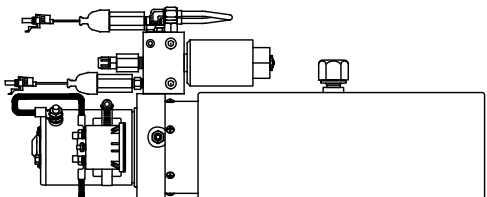


- Ⓐ AP26791 HOSE ASSY .25" x 250'
- Ⓑ AP6116 HOSE ASSY .25" x 240'
- Ⓒ AP5965 HOSE ASSY .25" x 180'
- Ⓓ AP5966 HOSE ASSY .25" x 243'

NOTE: CROSS TIES REQUIRED FOR FRONT AND REAR JACKS



TOP VIEW-MANIFOLD



SIDE VIEW PUMP/MANIFOLD-AP36195

LOCATION AND ORIENTATION OF PUMP/MANIFOLD ASSEMBLY WILL DIFFER DEPENDING UPON O.E.M.

NOTE: INSTALLATION MUST CONFORM TO GOOD SHOP PRACTICES, SAE STANDARDS, RVIA STANDARDS, AND OTHER APPLICABLE STANDARDS.

LEVELING SYSTEM: AP47551

NO.	DATE	REVISION
THE INFORMATION DISCLOSED ON THIS DRAWING IS CONFIDENTIAL AND MUST NOT BE DISCLOSED OR USED IN ANY MANNER WHICH WILL BE DETRIMENTAL TO THE HWH CORPORATION		

HWH		I-80 EXIT 267 SOUTH RT 1 MOSCOW, IOWA 52760	
SCALE 1:6	DATE 24JAN11	DRAWN BY .	
HYD CONN DIAGRAM			
QUALITY VANS		DRAWING NUMBER MP70360	