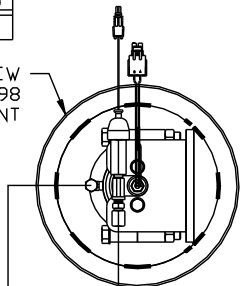


ORIENTATION
← FRONT

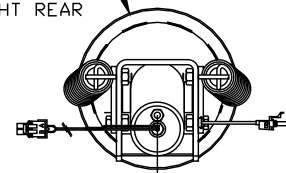
AP47883 JSCK HOSE KIT

- Ⓐ AP4162 HOSE ASSY .25" x 192" ROD END RIGHT FRONT JACK
- Ⓑ AP45367 HOSE ASSY .25/05 x 168" CAP END RIGHT FRONT JACK
- Ⓒ AP4062 HOSE ASSY .25" x 132" ROD END LEFT FRONT JACK
- Ⓓ AP43250 HOSE ASSY .25/05 x 120" CAP END LEFT FRONT JACK
- Ⓔ AP4164 HOSE ASSY .25" x 384" CAP END LEFT REAR JACK
- Ⓕ AP6218 HOSE ASSY .25" x 480" CAP END RIGHT REAR JACK
- Ⓖ AP4060 HOSE ASSY .25" x 24" PRESSURE
- Ⓗ P6602 RETURN LINE .5" x 24" RETURN

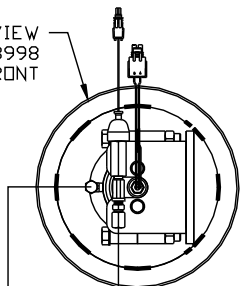
TOP VIEW
AP43998
RIGHT FRONT



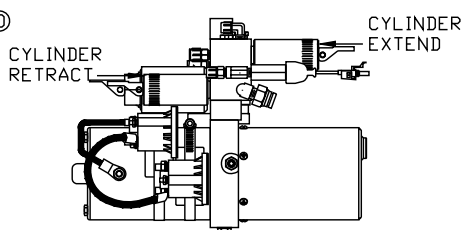
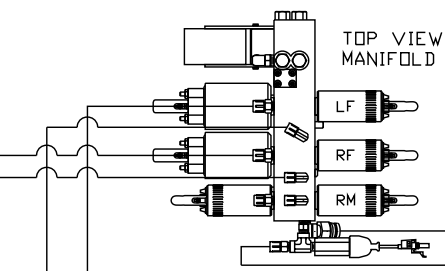
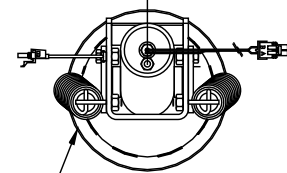
TOP VIEW
AP43876
RIGHT REAR



TOP VIEW
AP43998
LEFT FRONT

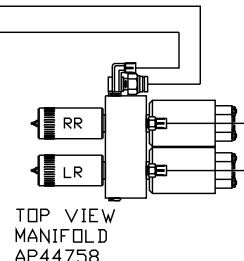


TOP VIEW
AP43876
LEFT REAR



SIDE VIEW PUMP/MANIFOLD-AP46592

LOCATION AND ORIENTATION OF
PUMP/MANIFOLD ASSEMBLY WILL
DIFFER DEPENDING UPON O.E.M.



NOTE: INSTALLATION MUST CONFORM TO GOOD SHOP PRACTICES, SAE STANDARDS, RVIA STANDARDS, AND OTHER APPLICABLE STANDARDS.

LEVELING SYSTEM: AP47657

NO.	DATE	REVISION
1	02AUG12	ADDED HOSE KIT NUMBERS

THE INFORMATION DISCLOSED ON THIS DRAWING IS CONFIDENTIAL AND MUST NOT BE DISCLOSED OR USED IN ANY MANNER WHICH WILL BE DETRIMENTAL TO THE HWH CORPORATION

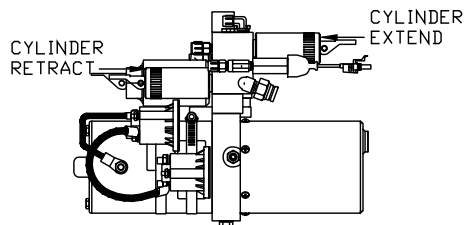
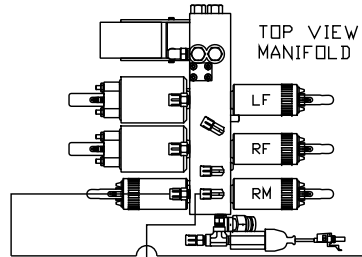
HWH			I-80 EXIT 267 SOUTH RT 1 MOSCOW, IOWA 52760		
SCALE 1:6	DATE 31JAN11	DRAWN BY .			
HYD CONN DIAGRAM					
ROLLINGSTAR				DRAWING NUMBER MP70370 A/B	

AP47884 HOSE KIT 1RM

- (A) AP4064 HOSE ASSY 25" x 300"
ROD END - ALWAYS PRESSURIZED
- (B) AP5561 HOSE ASSY .25" x 336"
CAP END (ROOM)
- (C) AP4158 HOSE ASSY .25" x 12"
ROD END - ALWAYS PRESSURIZED (LIFT)
- (D) AP4161 HOSE ASSY .25" x 120"
CAP END (ROOM)
- (E) AP4158 HOSE ASSY .25" x 12"
CAP END (LIFT)
- (F) AP4161 HOSE ASSY .25" x 120"
CAP END (ROOM)

NOTE: HOSES (I) AND (J) ARE INCLUDED WITH THE ROOM EXTENSION MECHANISM

- (G) AP24645 HOSE ASSY HWH02HP x 144"
ROD END - ALWAYS PRESSURIZED
HOSES MUST BE HIGH PRESSURE
HOSES OF EQUAL LENGTH AND DIAMETER
- (H) AP4827 HOSE ASSY .25" x 144"
CAP END - HOSES MUST MAINTAIN
EQUAL LENGTH AND DIAMETER
- (I) AP24632 HOSE ASSY HWH02HP x 48"
ROD END - ALWAYS PRESSURIZED -
MUST BE HIGH PRESSURE HOSES OF
EQUAL LENGTH AND DIAMETER
- (J) AP24818 HOSE ASSY HWH02HP x 86"
CAP END - MUST MAINTAIN EQUAL
LENGTH AND DIAMETER
- (K) AP4074 HOSE ASSY .25" x 108" CAP END (LIFT)
MUST MAINTAIN EQUAL LENGTH
AND DIAMETER
- (L) AP4062 HOSE ASSY .25" x 132" ROD END (LIFT)
ALWAYS PRESSURIZED - MUST MAINTAIN
EQUAL LENGTH AND DIAMETER



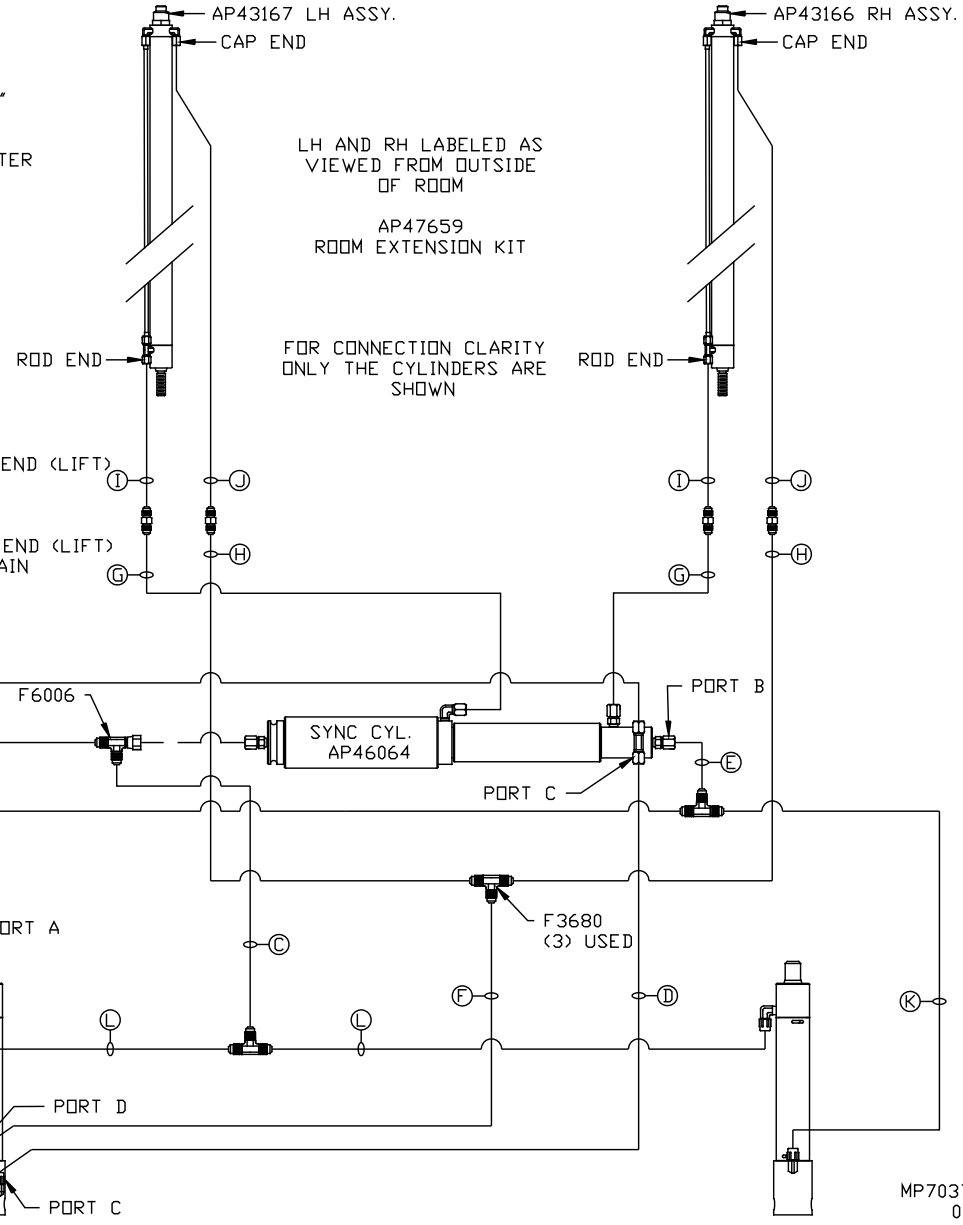
SIDE VIEW PUMP/MANIFOLD-AP46592

LOCATION AND ORIENTATION OF PUMP/MANIFOLD ASSEMBLY WILL DIFFER DEPENDING UPON O.E.M.

CYL ASSY (PART OF AP47850 PLATFORM ASSY.)

NOTE: GENERIC VIEWS FOR CLARITY. CYLINDERS MAY BE REVERSED

NOTE: INSTALLATION MUST CONFORM TO GOOD SHOP PRACTICES, SAE STANDARDS, RVIA STANDARDS, AND OTHER APPLICABLE STANDARDS.



LH AND RH LABELED AS VIEWED FROM OUTSIDE OF ROOM

AP47659 ROOM EXTENSION KIT

FOR CONNECTION CLARITY ONLY THE CYLINDERS ARE SHOWN