

NOTE: INSTALLATION MUST CONFORM TO GOOD SHOP PRACTICES, SAE STANDARDS, RVIA STANDARDS, AND OTHER APPLICABLE STANDARDS.

CONTROL PACKAGE: AP48223

			HWH	I-80 EXIT 267 SOUTH RT 1 MOSCOW, IOWA 52760
			SCALE 1:6	DATE 07MAR11
			DRAWN BY .	
1	16SEP14	CORRECTED E&F HOSES		
NO.	DATE	REVISION		
THE INFORMATION DISCLOSED ON THIS DRAWING IS CONFIDENTIAL AND MUST NOT BE DISCLOSED OR USED IN ANY MANNER WHICH WILL BE DETRIMENTAL TO THE HWH CORPORATION				
LOYALTY			DRAWING NUMBER MP70389 A/B	

ORIENTATION

← FRONT

AP40753  
LH ASSY.  
CAP END

AP40754  
RH ASSY.  
CAP END

LH AND RH LABELED AS  
VIEWED FROM OUTSIDE  
OF ROOM

AP44687 ROOM  
UNIVERSAL LEVEL OUT  
ROOM OPTION #2

FOR CONNECTION CLARITY ONLY  
THE CYLINDERS ARE SHOWN

\*: PART OF THE ROOM  
EXTENSION MECHANISM.

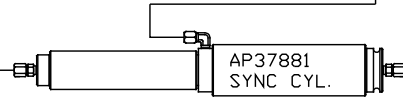
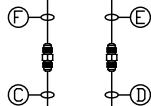
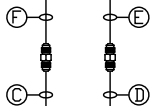
- Ⓐ .25" ID HOSE  
ROD END - ALWAYS PRESSURIZED
- Ⓑ .25" ID HOSE  
CAP END
- Ⓒ .125" ID HOSE  
ROD END - ALWAYS PRESSURIZED - MUST  
BE HIGH PRESSURE HOSES OF EQUAL  
LENGTH AND DIAMETER
- Ⓓ .25" ID HOSE  
CAP END - MUST MAINTAIN EQUAL LENGTH  
AND DIAMETER

NOTE: HOSES Ⓔ AND Ⓕ ARE INCLUDED  
WITH THE ROOM EXTENSION MECHANISM.

- Ⓔ AP24818 HOSE ASSY HWH02HP x 86"  
CAP END - MUST MAINTAIN EQUAL LENGTH  
AND DIAMETER
- Ⓕ AP24632 HOSE ASSY HWH02HP x 48"  
ROD END - ALWAYS PRESSURIZED - MUST  
BE HIGH PRESSURE HOSES OF EQUAL  
LENGTH AND DIAMETER
- Ⓖ .125" ID HP HOSE  
CAP END - MUST BE HIGH PRESSURE HOSES  
OF EQUAL LENGTH AND DIAMETER

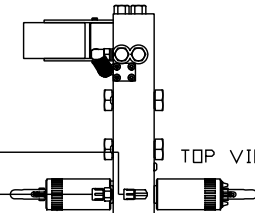
ROD END

ROD END



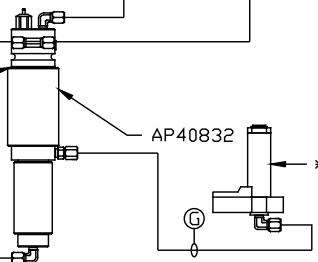
Ⓐ

Ⓑ



TOP VIEW - MANIFOLD

NOTE: LIFT SYNC MUST BE MOUNTED  
WITH THE CAP END POINTING UP.

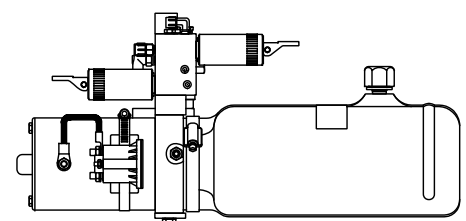


\*LH ASSY.

AP40832

\*RH ASSY.

Ⓖ



SIDE VIEW PUMP/MANIFOLD-AP45790

LOCATION AND ORIENTATION OF  
PUMP/MANIFOLD ASSEMBLY WILL  
DIFFER DEPENDING UPON O.E.M.

NOTE: INSTALLATION MUST CONFORM TO GOOD SHOP PRACTICES, SAE  
STANDARDS, RVIA STANDARDS, AND OTHER APPLICABLE STANDARDS.

MP70389 B/B  
07MAR11