

HOSES FOR ROOM #1

NOTE: HOSES (E) AND (F) ARE INCLUDED WITH THE ROOM EXTENSION MECHANISM

- (A) .25" ID HOSE ASSY
ROD END - ALWAYS PRESSURIZED

(B) .25" ID HOSE ASSY
CAP END (ROOM)

(C) .125" ID HIGH PRESSURE HOSE ASSY
ROD END - ALWAYS PRESSURIZED
HOSES MUST BE HIGH PRESSURE
HOSES OF EQUAL LENGTH AND DIAMETER

(D) .25" ID HOSE ASSY
CAP END - HOSES MUST MAINTAIN
EQUAL LENGTH AND DIAMETER

(E) AP24632 HOSE ASSY HWH02HP x 48"
ROD END - ALWAYS PRESSURIZED -
MUST BE HIGH PRESSURE HOSES OF
EQUAL LENGTH AND DIAMETER

(F) AP24818 HOSE ASSY HWH02HP x 86"
CAP END - MUST MAINTAIN EQUAL
LENGTH AND DIAMETER
- (I) .25" ID HOSE ASSY
CAP END (LIFT)

(J) .25" ID HOSE ASSY
CAP END (ROOM)

(K) .25" ID HOSE ASSY
CAP END (ROOM)

(L) .25" ID HOSE ASSY ROD END (LIFT)
ALWAYS PRESSURIZED

(M) .25" ID HOSE ASSY
CAP END (LIFT)

(N) .25" ID HOSE ASSY
ROD END - ALWAYS PRESSURIZED (LIFT)

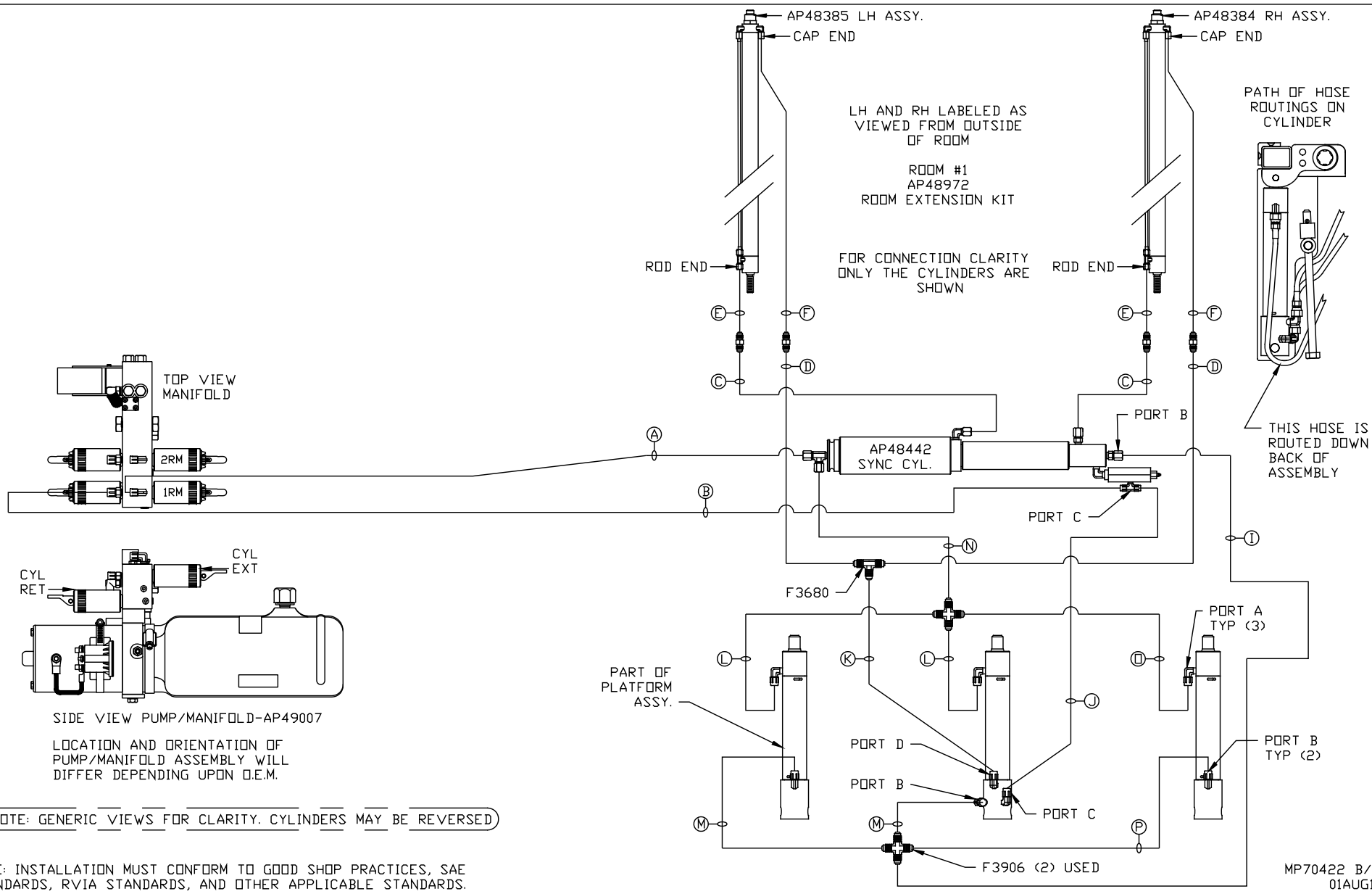
(O) .25" ID HOSE ASSY ROD END (LIFT)
ALWAYS PRESSURIZED

(P) .25" ID HOSE ASSY
CAP END LIFT

NOTE: INSTALLATION MUST CONFORM TO GOOD SHOP PRACTICES, SAE STANDARDS, RVIA STANDARDS, AND OTHER APPLICABLE STANDARDS.

CONTROL PACKAGE: AP48970

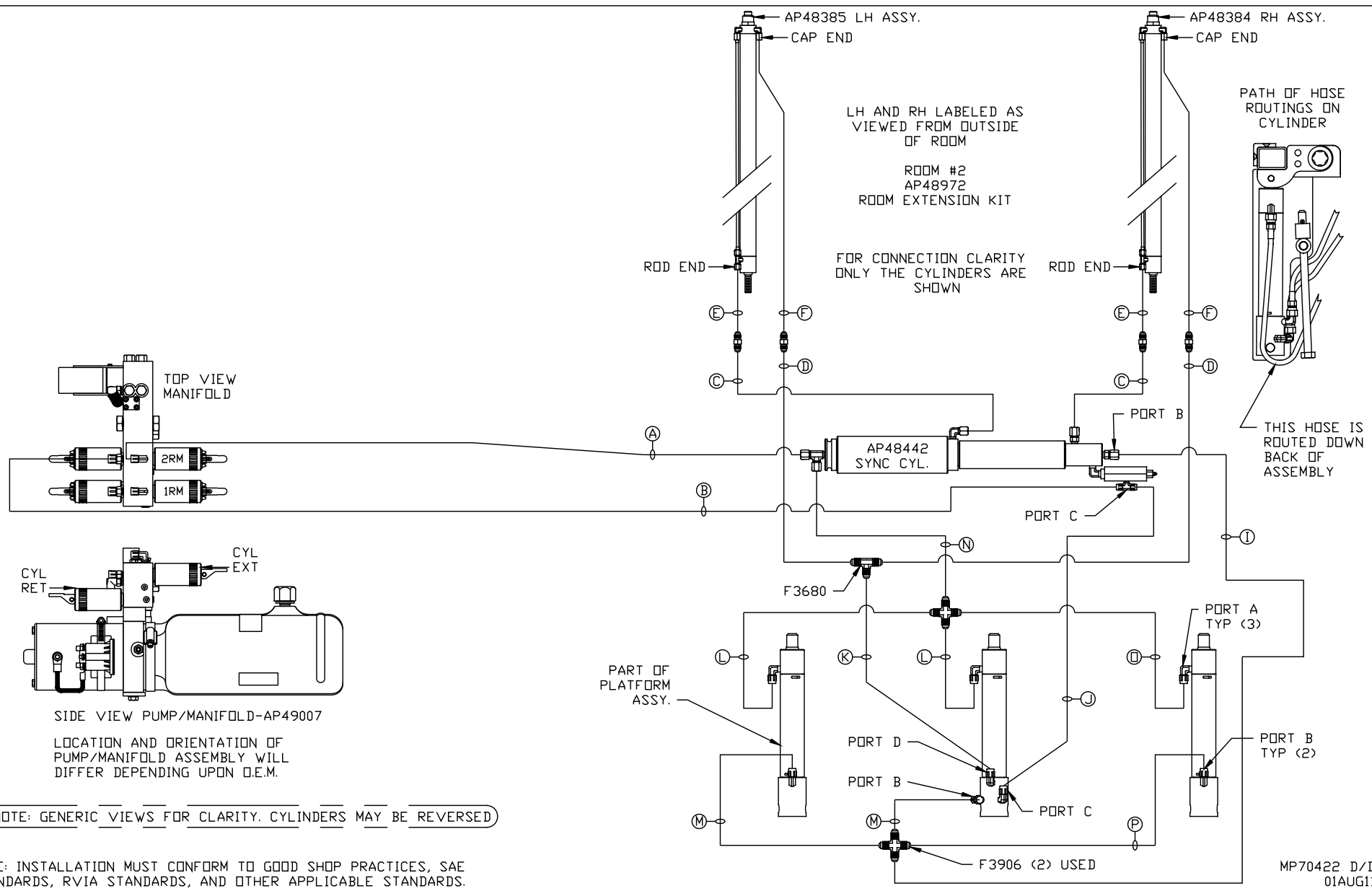
			<p style="font-size: 24pt; margin: 0;">HWH</p>	<p style="font-size: 10pt; margin: 0;">I-80 EXIT 267 SOUTH RT 1 MOSCOW, IOWA 52760</p>
			SCALE 1:6	DATE 01AUG11
			HYD CONN DIAGRAM	
NO.	DATE	REVISION	EVI	
THE INFORMATION DISCLOSED ON THIS DRAWING IS CONFIDENTIAL AND MUST NOT BE DISCLOSED OR USED IN ANY MANNER WHICH WILL BE DETRIMENTAL TO THE HWH CORPORATION				
			DRAWING NUMBER MP70422 A/D	



HOSES FOR ROOM #2

NOTE: HOSES (E) AND (F) ARE INCLUDED
WITH THE ROOM EXTENSION MECHANISM

- | | |
|---|--|
| (A) .25" ID HOSE ASSY
ROD END - ALWAYS PRESSURIZED | (I) .25" ID HOSE ASSY
CAP END (LIFT) |
| (B) .25" ID HOSE ASSY
CAP END (ROOM) | (J) .25" ID HOSE ASSY
CAP END (ROOM) |
| (C) .125" ID HIGH PRESSURE HOSE ASSY
ROD END - ALWAYS PRESSURIZED
HOSES MUST BE HIGH PRESSURE
HOSES OF EQUAL LENGTH AND DIAMETER | (K) .25" ID HOSE ASSY
CAP END (ROOM) |
| (D) .25" ID HOSE ASSY
CAP END - HOSES MUST MAINTAIN
EQUAL LENGTH AND DIAMETER | (L) .25" ID HOSE ASSY ROD END (LIFT)
ALWAYS PRESSURIZED |
| (E) AP24632 HOSE ASSY HWH02HP x 48"
ROD END - ALWAYS PRESSURIZED -
MUST BE HIGH PRESSURE HOSES OF
EQUAL LENGTH AND DIAMETER | (M) .25" ID HOSE ASSY
CAP END (LIFT) |
| (F) AP24818 HOSE ASSY HWH02HP x 86"
CAP END - MUST MAINTAIN EQUAL
LENGTH AND DIAMETER | (N) .25" ID HOSE ASSY
ROD END - ALWAYS PRESSURIZED (LIFT) |
| | (O) .25" ID HOSE ASSY ROD END (LIFT)
ALWAYS PRESSURIZED |
| | (P) .25" ID HOSE ASSY
CAP END LIFT |



NOTE: GENERIC VIEWS FOR CLARITY. CYLINDERS MAY BE REVERSED

NOTE: INSTALLATION MUST CONFORM TO GOOD SHOP PRACTICES, SAE STANDARDS, RVIA STANDARDS, AND OTHER APPLICABLE STANDARDS.

MP70422 D/D
01AUG11