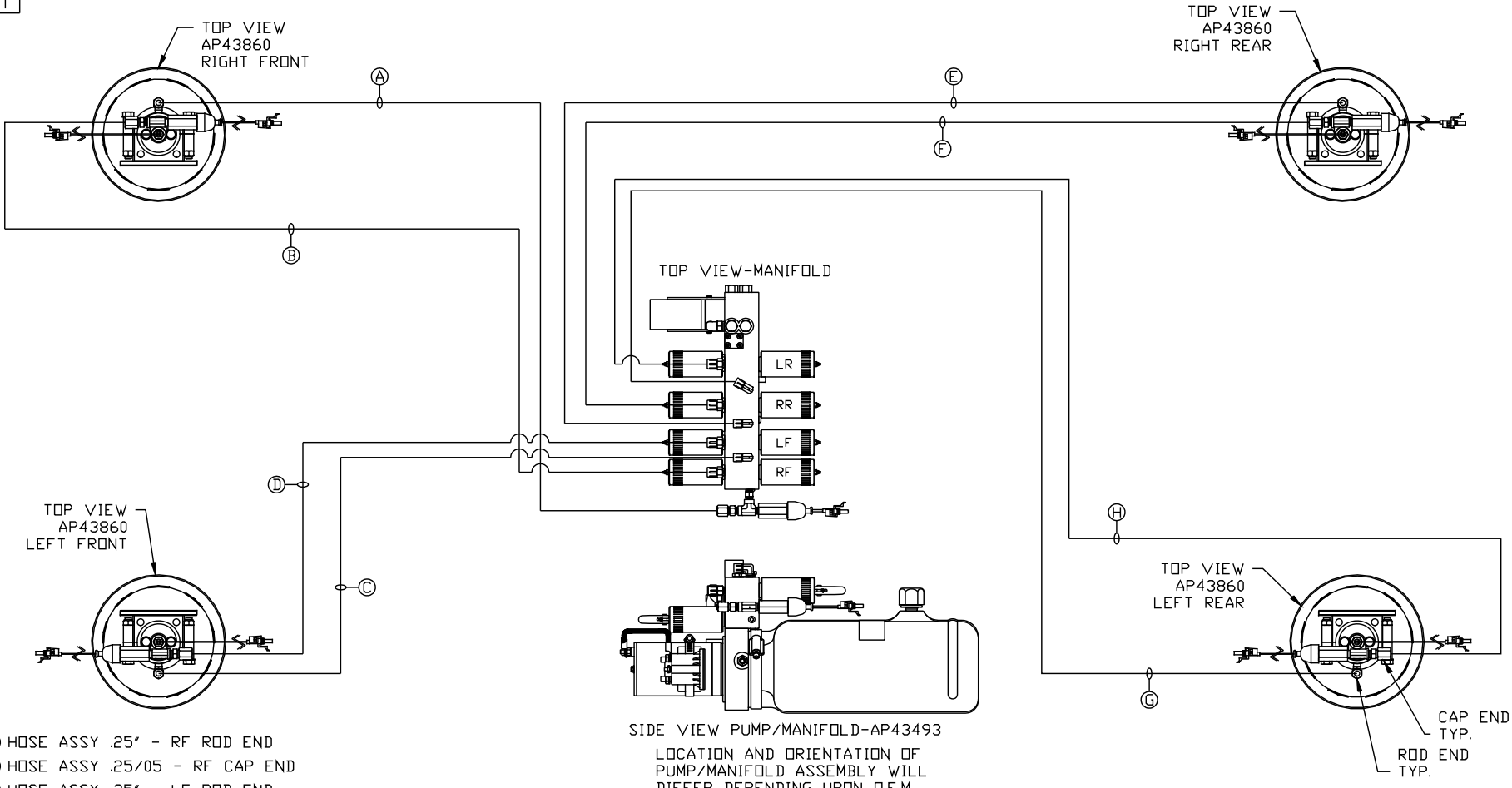


ORIENTATION
← FRONT



- Ⓐ HOSE ASSY .25" - RF ROD END
- Ⓑ HOSE ASSY .25/05 - RF CAP END
- Ⓒ HOSE ASSY .25" - LF ROD END
- Ⓓ HOSE ASSY .25/05 - LF CAP END
- Ⓔ HOSE ASSY .25" - RR ROD END
- Ⓕ HOSE ASSY .25/05 - RR CAP END
- Ⓖ HOSE ASSY .25" - LR ROD END
- Ⓗ HOSE ASSY .25/05 - LR CAP END

NOTE: INSTALLATION MUST CONFORM TO GOOD SHOP PRACTICES, SAE STANDARDS, RVIA STANDARDS, AND OTHER APPLICABLE STANDARDS.

LEVELING SYSTEM: AP48447

NO.	DATE	REVISION

THE INFORMATION DISCLOSED ON THIS DRAWING IS CONFIDENTIAL AND MUST NOT BE DISCLOSED OR USED IN ANY MANNER WHICH WILL BE DETRIMENTAL TO THE HWH CORPORATION

HWH			I-80 EXIT 267 SOUTH RT 1 MOSCOW, IOWA 52760		
SCALE 1:6	DATE 12AUG11	DRAWN BY .			
HYD CONN DIAGRAM					
QUALITY VANS				DRAWING NUMBER MP70432	