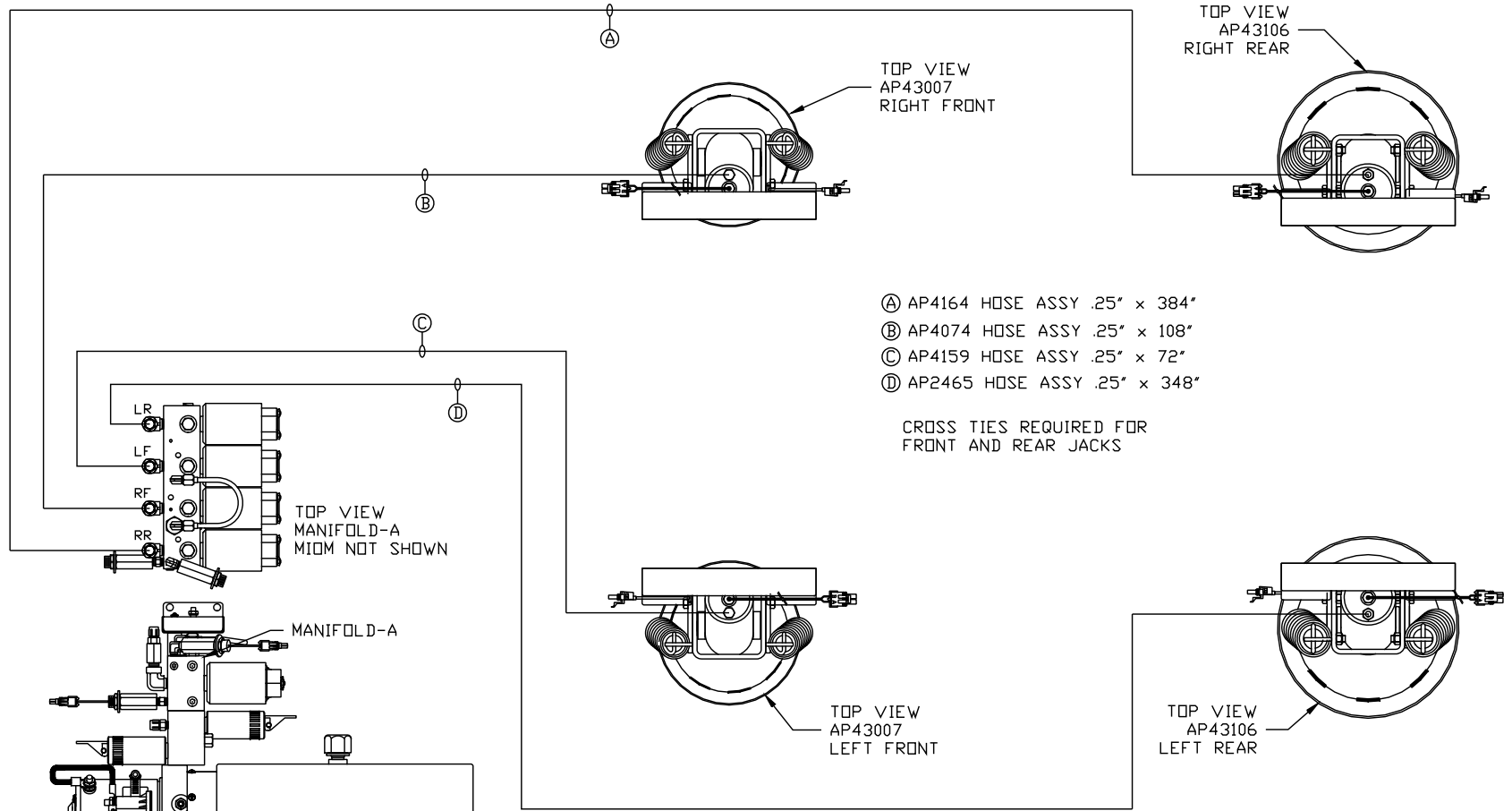


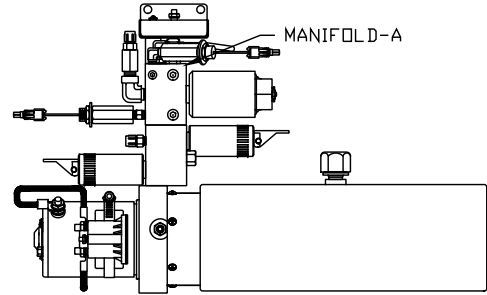
ORIENTATION  
← FRONT



- Ⓐ AP4164 HOSE ASSY .25" x 384"
- Ⓑ AP4074 HOSE ASSY .25" x 108"
- Ⓒ AP4159 HOSE ASSY .25" x 72"
- Ⓓ AP2465 HOSE ASSY .25" x 348"

CROSS TIES REQUIRED FOR FRONT AND REAR JACKS

TOP VIEW  
MANIFOLD-A  
MIOM NOT SHOWN



SIDE VIEW PUMP/MANIFOLD-AP48368

LOCATION AND ORIENTATION OF PUMP/MANIFOLD ASSEMBLY WILL DIFFER DEPENDING UPON O.E.M.

NOTE: INSTALLATION MUST CONFORM TO GOOD SHOP PRACTICES, SAE STANDARDS, RVIA STANDARDS, AND OTHER APPLICABLE STANDARDS.

PUMP KIT: AP48367  
JACK KIT: AP48363

| NO. | DATE | REVISION |
|-----|------|----------|
|     |      |          |
|     |      |          |
|     |      |          |

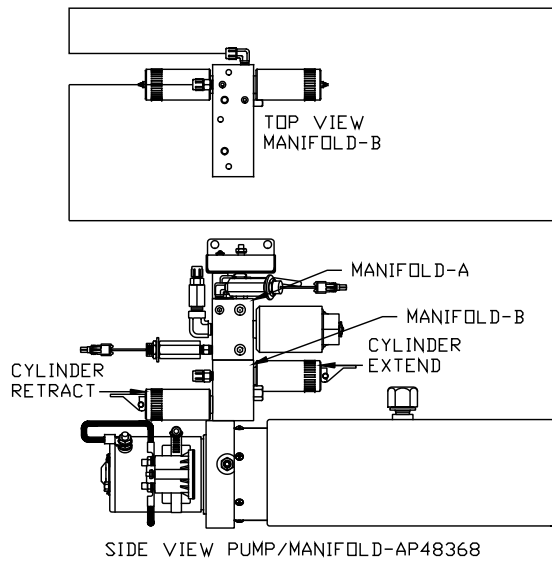
THE INFORMATION DISCLOSED ON THIS DRAWING IS CONFIDENTIAL AND MUST NOT BE DISCLOSED OR USED IN ANY MANNER WHICH WILL BE DETRIMENTAL TO THE HWH CORPORATION

|                         |              |  |  |
|-------------------------|--------------|--|--|
| <b>HWH</b>              |              | I-80 EXIT 267 SOUTH<br>RT 1 MOSCOW, IOWA 52760 |  |
| SCALE 1:6               | DATE 17AUG11 | DRAWN BY .                                     |  |
| <b>HYD CONN DIAGRAM</b> |              |  |  |
| <b>TIFFIN</b>           |              | DRAWING NUMBER<br>MP70447 A/B                  |  |

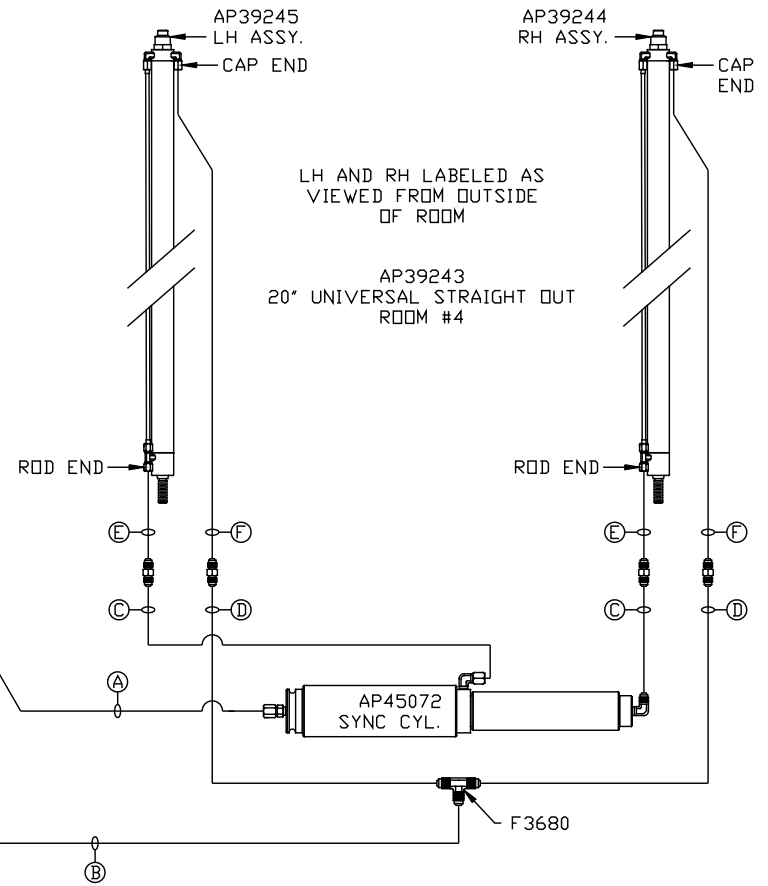
ORIENTATION  
 ← FRONT

NOTE: HOSES (E) AND (F) ARE INCLUDED WITH THE ROOM EXTENSION MECHANISM.

- (A) AP4159 HOSE ASSY .25" x 72"  
ROD END - ALWAYS PRESSURIZED
- (B) AP5352 HOSE ASSY .25" x 96"  
CAP END
- (C) AP24653 HOSE ASSY HWH02HP x 204"  
ROD END - ALWAYS PRESSURIZED - MUST BE HIGH PRESSURE HOSES OF EQUAL LENGTH AND DIAMETER
- (D) AP4310 HOSE ASSY .25" x 204"  
CAP END - MUST MAINTAIN EQUAL LENGTH AND DIAMETER
- (E) AP24637 HOSE ASSY HWH02HP x 66"  
CAP END - MUST MAINTAIN EQUAL LENGTH AND DIAMETER
- (F) AP24631 HOSE ASSY HWH02HP x 42"  
ROD END - ALWAYS PRESSURIZED - MUST BE HIGH PRESSURE HOSES OF EQUAL LENGTH AND DIAMETER



LOCATION AND ORIENTATION OF PUMP/MANIFOLD ASSEMBLY WILL DIFFER DEPENDING UPON O.E.M.



NOTE: INSTALLATION MUST CONFORM TO GOOD SHOP PRACTICES, SAE STANDARDS, RVIA STANDARDS, AND OTHER APPLICABLE STANDARDS.

MP70447 B/B  
 17AUG11