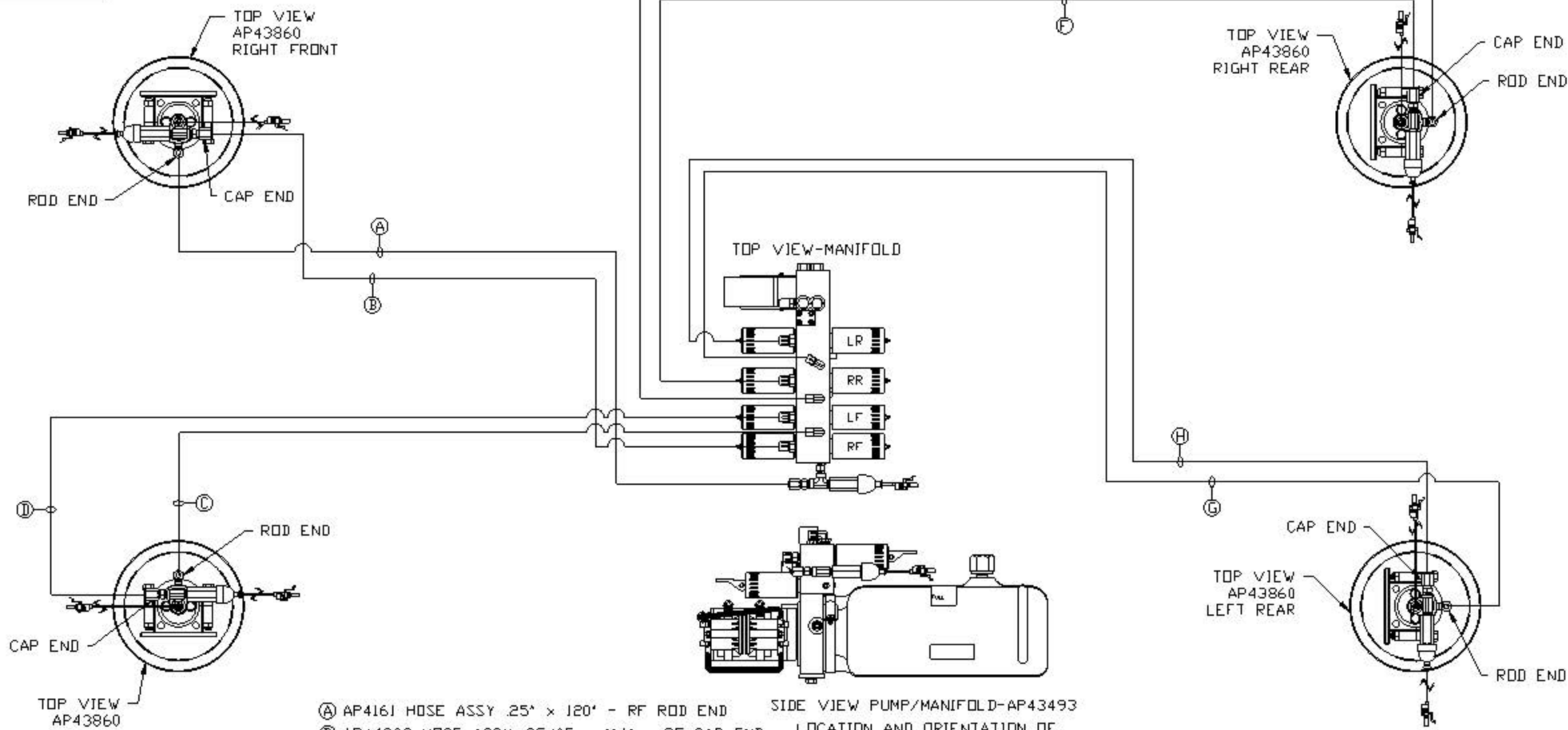


ORIENTATION
FRONT



TOP VIEW
AP43860
RIGHT FRONT

TOP VIEW
AP43860
RIGHT REAR

TOP VIEW-MANIFOLD

TOP VIEW
AP43860
LEFT REAR

SIDE VIEW PUMP/MANIFOLD-AP43493

LOCATION AND ORIENTATION OF
PUMP/MANIFOLD ASSEMBLY WILL
DIFFER DEPENDING UPON O.E.M.

TOP VIEW
AP43860
LEFT FRONT

- (A) AP4161 HOSE ASSY .25" x 120' - RF ROD END
- (B) AP44282 HOSE ASSY .25/05 x 114' - RF CAP END
- (C) AP5924 HOSE ASSY .25" x 228' - LF ROD END
- (D) AP45368 HOSE ASSY .25/05 x 216' - LF CAP END
- (E) AP27563 HOSE ASSY .25" x 416' - RR ROD END
- (F) AP46311 HOSE ASSY .25/05 x 396' - RR CAP END
- (G) AP7135 HOSE ASSY .25" x 516' - LR ROD END
- (H) AP44663 HOSE ASSY .25/05 x 504' - LR CAP END

NOTE: INSTALLATION MUST CONFORM TO GOOD SHOP PRACTICES, SAE STANDARDS, RVIA STANDARDS, AND OTHER APPLICABLE STANDARDS.

LEVELING SYSTEM: AP49645

NO.	DATE	REVISION

HWH I-80 EXIT 267 SOUTH
RT 1 MOSCOW, IOWA 52760

SCALE 1:6 DATE 27FEB12 DRAWN BY .

HYD CONN DIAGRAM

SPEVCO DRAWING NUMBER
MP70499