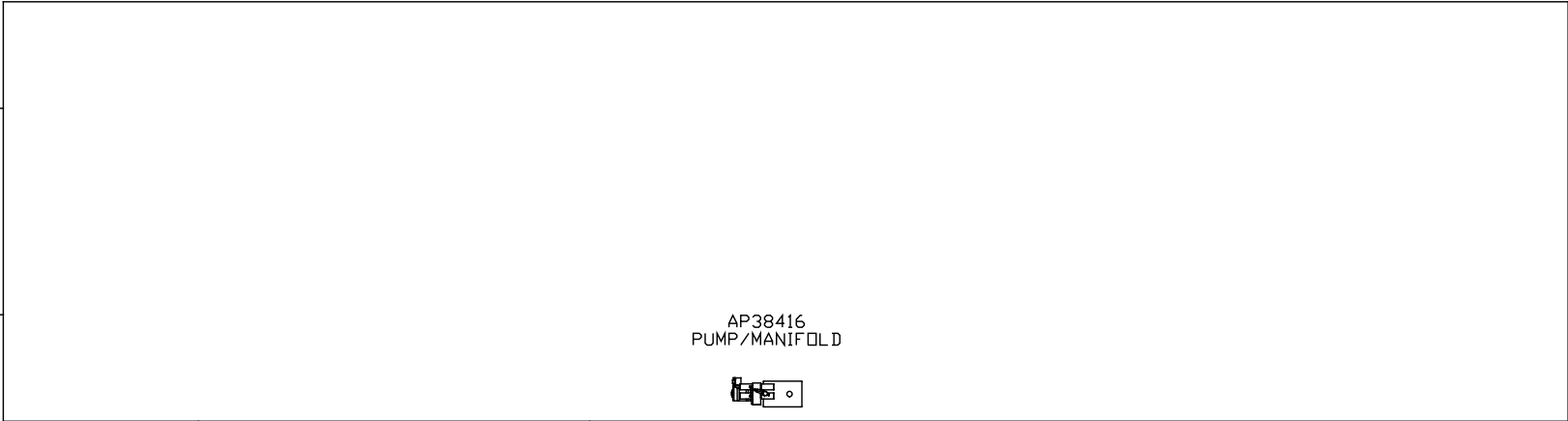


ORIENTATION

← FRONT

GEN SLIDE
FUNCTION 2
"A" ROOM



AP38416
PUMP/MANIFOLD



AP39553
UNIVERSAL STRAIGHT OUT
FUNCTION 1
"B" ROOM



| | | |
|-----|------|----------|
| | | |
| | | |
| | | |
| | | |
| | | |
| NO. | DATE | REVISION |

HWH I-80 EXIT 267 SOUTH
RT 1 MOSCOW, IOWA 52760

SCALE 1:6 DATE 12JUL12 DRAWN BY .

HYD CONN DIAGRAM

NOTE: INSTALLATION MUST CONFORM TO GOOD SHOP PRACTICES, SAE STANDARDS, RVIA STANDARDS, AND OTHER APPLICABLE STANDARDS.

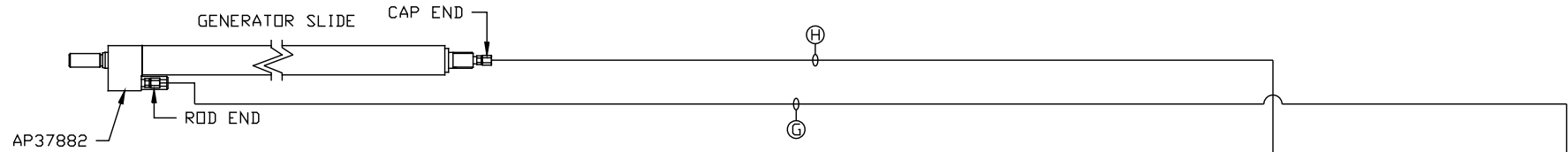
LEVELING SYSTEM: AP41137

THE INFORMATION DISCLOSED ON THIS DRAWING IS CONFIDENTIAL AND MUST NOT BE DISCLOSED OR USED IN ANY MANNER WHICH WILL BE DETRIMENTAL TO THE HWH CORPORATION

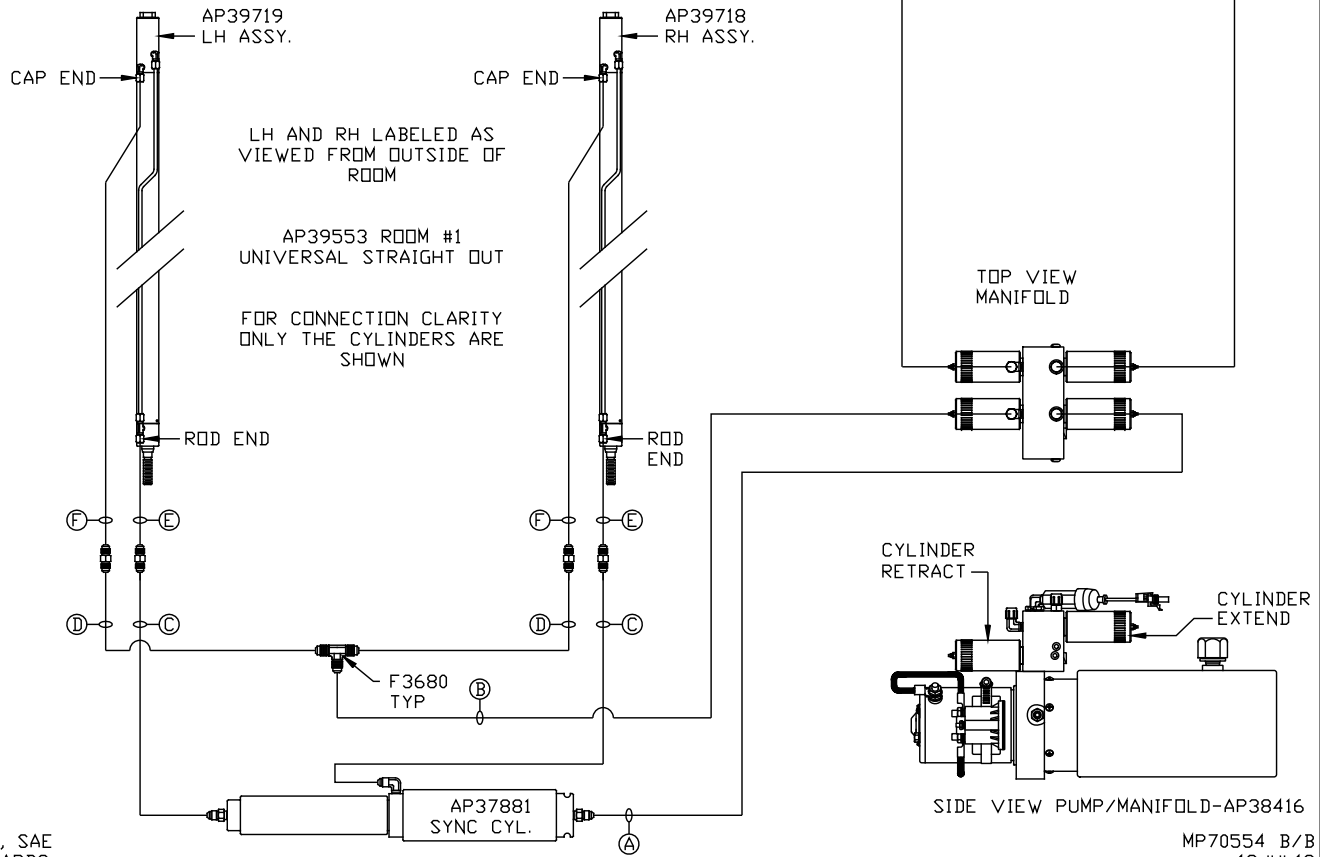
FORETRAVEL

DRAWING NUMBER
MP70554 A/B

ORIENTATION
 ← FRONT



- NOTE: HOSES (E) AND (F) ARE INCLUDED WITH THE ROOM EXTENSION MECHANISM
- (A) AP4074 HOSE ASSY .25" x 108"
 ROD END - ALWAYS PRESSURIZED
 - (B) AP7099 HOSE ASSY .25" x 110"
 CAP END
 - (C) AP24667 HOSE ASSY HWH02HP x 312"
 ROD END - ALWAYS PRESSURIZED - MUST BE HIGH PRESSURE HOSES OF EQUAL LENGTH AND DIAMETER
 - (D) AP5216 HOSE ASSY .25" x 312"
 CAP END - MUST MAINTAIN EQUAL LENGTH AND DIAMETER
 - (E) AP24632 HOSE ASSY HWH02HP x 48"
 ROD END - ALWAYS PRESSURIZED - MUST BE HIGH PRESSURE HOSES OF EQUAL LENGTH AND DIAMETER
 - (F) AP24818 HOSE ASSY HWH02HP x 86"
 CAP END - MUST MAINTAIN EQUAL LENGTH AND DIAMETER
 - (G) AP13851 HOSE ASSY .25" x 318"
 ROD END - ALWAYS PRESSURIZED
 - (H) AP5216 HOSE ASSY .25" x 312"
 CAP END



NOTE: INSTALLATION MUST CONFORM TO GOOD SHOP PRACTICES, SAE STANDARDS, RVIA STANDARDS, AND OTHER APPLICABLE STANDARDS.

MP70554 B/B
 12JUL12