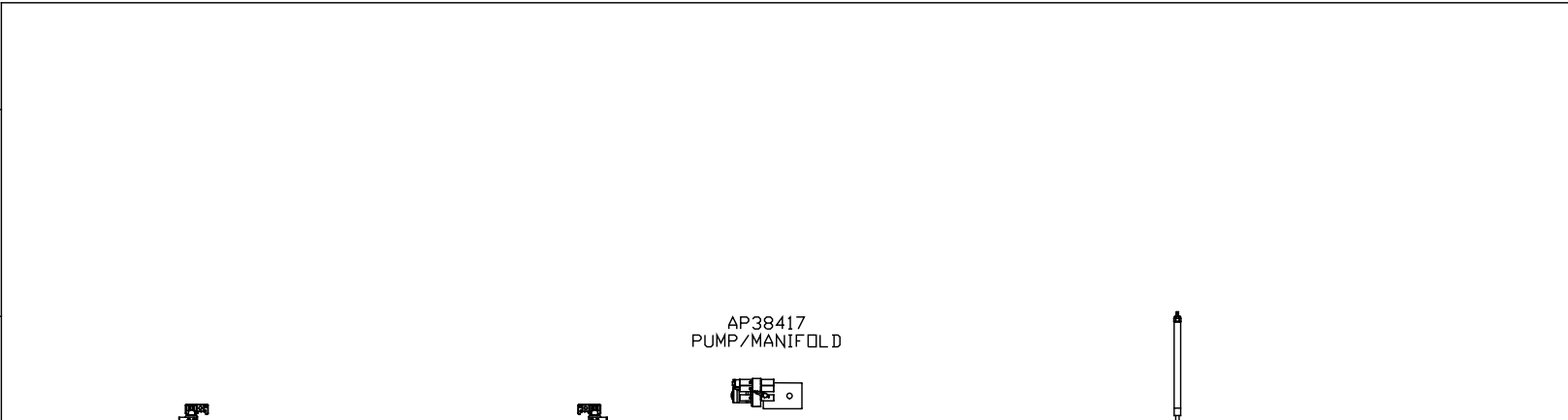
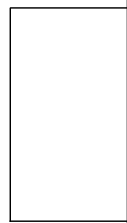


ORIENTATION  
 ← FRONT

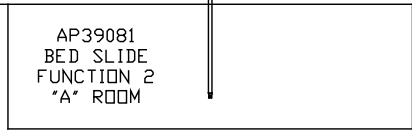
GEN SLIDE  
 FUNCTION 3  
 "A" ROOM



AP39553  
 UNIVERSAL STRAIGHT OUT  
 FUNCTION 1  
 "B" ROOM



AP39081  
 BED SLIDE  
 FUNCTION 2  
 "A" ROOM



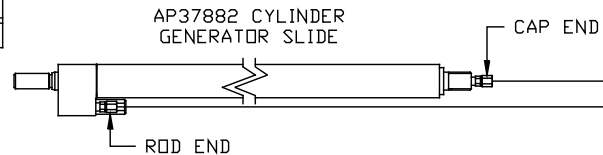
NOTE: INSTALLATION MUST CONFORM TO GOOD SHOP PRACTICES, SAE STANDARDS, RVIA STANDARDS, AND OTHER APPLICABLE STANDARDS.

LEVELING SYSTEM: AP43519

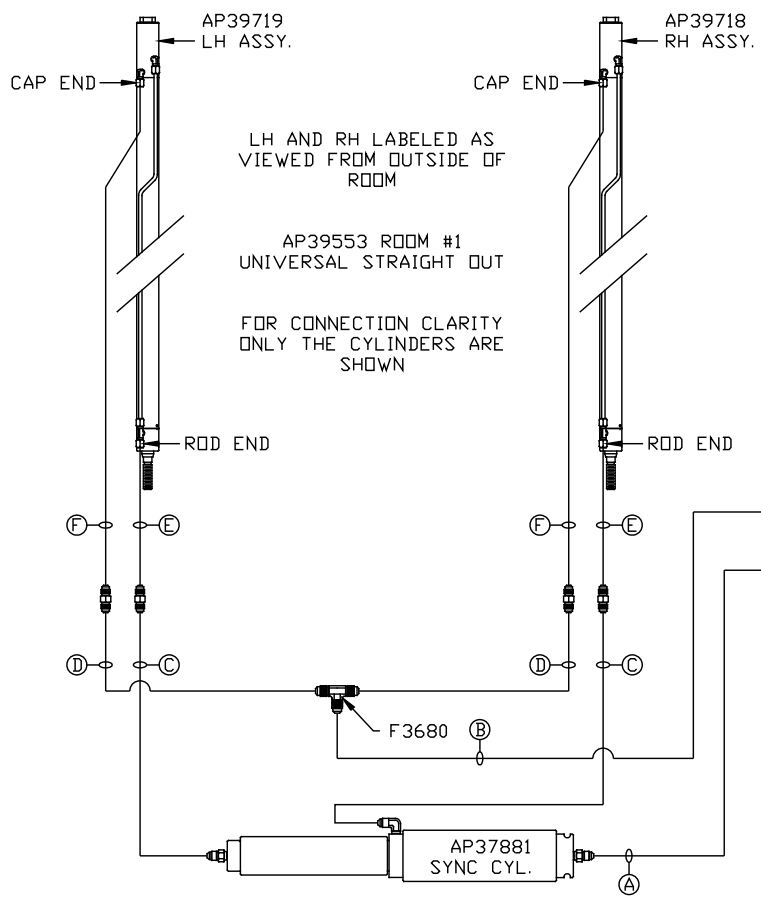
NO.	DATE	REVISION
THE INFORMATION DISCLOSED ON THIS DRAWING IS CONFIDENTIAL AND MUST NOT BE DISCLOSED OR USED IN ANY MANNER WHICH WILL BE DETRIMENTAL TO THE HWH CORPORATION		

HWH		I-80 EXIT 267 SOUTH RT 1 MOSCOW, IOWA 52760	
SCALE 1:6	DATE 12JUL12	DRAWN BY .	
HYD CONN DIAGRAM			
FORETRAVEL		DRAWING NUMBER MP70557 A/C	

ORIENTATION  
 ← FRONT



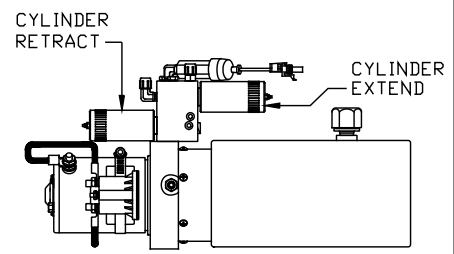
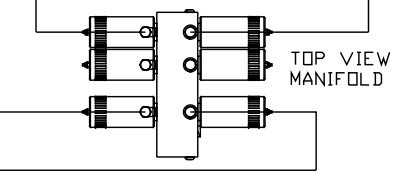
- NOTE: HOSES (E) AND (F) ARE INCLUDED WITH THE ROOM EXTENSION MECHANISM
- (A) AP4074 HOSE ASSY .25" x 108"  
ROD END - ALWAYS PRESSURIZED
  - (B) AP7099 HOSE ASSY .25" x 110"  
CAP END
  - (C) AP24667 HOSE ASSY HWH02HP x 312"  
ROD END - ALWAYS PRESSURIZED - MUST BE HIGH PRESSURE HOSES OF EQUAL LENGTH AND DIAMETER
  - (D) AP5216 HOSE ASSY .25" x 312"  
CAP END - MUST MAINTAIN EQUAL LENGTH AND DIAMETER
  - (E) AP24632 HOSE ASSY HWH02HP x 48"  
ROD END - ALWAYS PRESSURIZED - MUST BE HIGH PRESSURE HOSES OF EQUAL LENGTH AND DIAMETER
  - (F) AP24818 HOSE ASSY HWH02HP x 86"  
CAP END - MUST MAINTAIN EQUAL LENGTH AND DIAMETER
  - (G) AP13851 HOSE ASSY .25" x 318"  
ROD END - ALWAYS PRESSURIZED
  - (H) AP5216 HOSE ASSY .25" x 312"  
CAP END



LH AND RH LABELED AS VIEWED FROM OUTSIDE OF ROOM

AP39553 ROOM #1 UNIVERSAL STRAIGHT OUT

FOR CONNECTION CLARITY ONLY THE CYLINDERS ARE SHOWN



SIDE VIEW PUMP/MANIFOLD-AP38417

NOTE: INSTALLATION MUST CONFORM TO GOOD SHOP PRACTICES, SAE STANDARDS, RVIA STANDARDS, AND OTHER APPLICABLE STANDARDS.

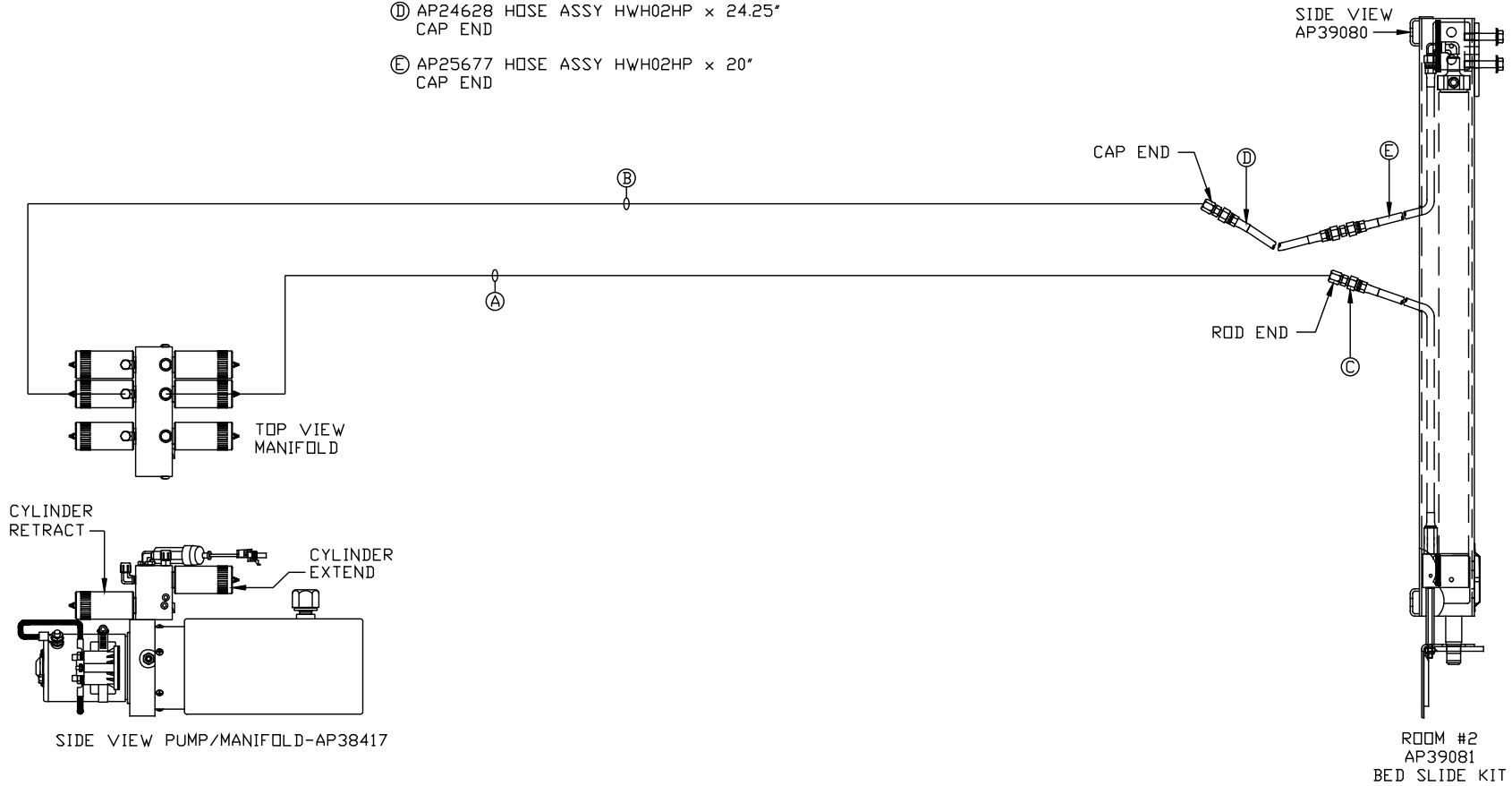
MP70557 B/C  
 12JUL12

ORIENTATION

← FRONT

NOTE: HOSES (C), (D) AND (E) ARE INCLUDED WITH THE ROOM EXTENSION MECHANISM

- (A) AP4904 HOSE ASSY .25" x 306"  
ROD END - ALWAYS PRESSURIZED
- (B) AP4064 HOSE ASSY .25 x 300"  
CAP END
- (C) AP24632 HOSE ASSY HWH02HP x 48"  
ROD END - ALWAYS PRESSURIZED
- (D) AP24628 HOSE ASSY HWH02HP x 24.25"  
CAP END
- (E) AP25677 HOSE ASSY HWH02HP x 20"  
CAP END



NOTE: INSTALLATION MUST CONFORM TO GOOD SHOP PRACTICES, SAE STANDARDS, RVIA STANDARDS, AND OTHER APPLICABLE STANDARDS.

MP70557 C/C  
12JUL12