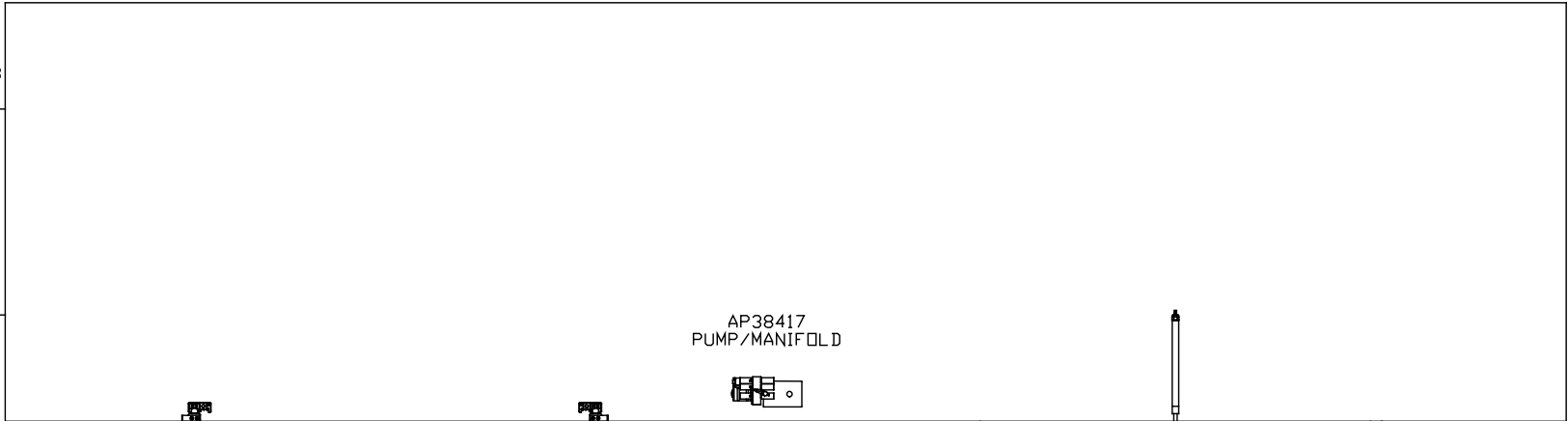
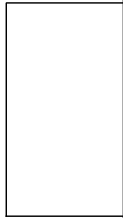


ORIENTATION
 ← FRONT

GEN SLIDE
 FUNCTION 3
 "A" ROOM



AP39553
 UNIVERSAL STRAIGHT OUT
 FUNCTION 1
 "B" ROOM

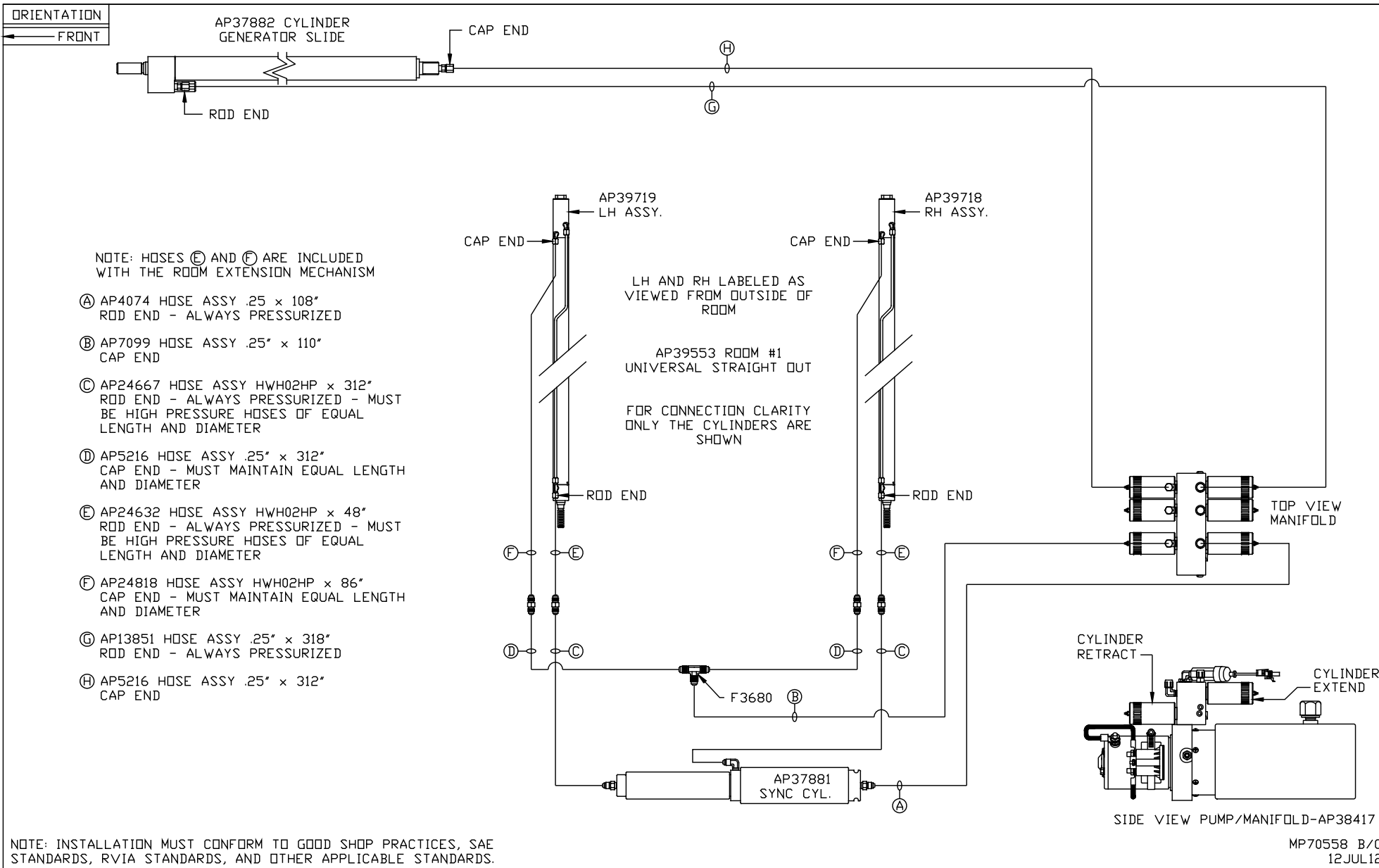
AP38417
 PUMP/MANIFOLD

AP39081
 BED SLIDE
 FUNCTION 2
 "A" ROOM

NOTE: INSTALLATION MUST CONFORM TO GOOD SHOP PRACTICES, SAE STANDARDS, RVIA STANDARDS, AND OTHER APPLICABLE STANDARDS.

LEVELING SYSTEM: AP44014

		HWH		I-80 EXIT 267 SOUTH RT 1 MOSCOW, IOWA 52760	
		SCALE 1:6	DATE 12JUL12	DRAWN BY .	
		HYD CONN DIAGRAM			
NO.	DATE	REVISION			
		THE INFORMATION DISCLOSED ON THIS DRAWING IS CONFIDENTIAL AND MUST NOT BE DISCLOSED OR USED IN ANY MANNER WHICH WILL BE DETRIMENTAL TO THE HWH CORPORATION		DRAWING NUMBER	
		FORETRAVEL		MP70558 A/C	

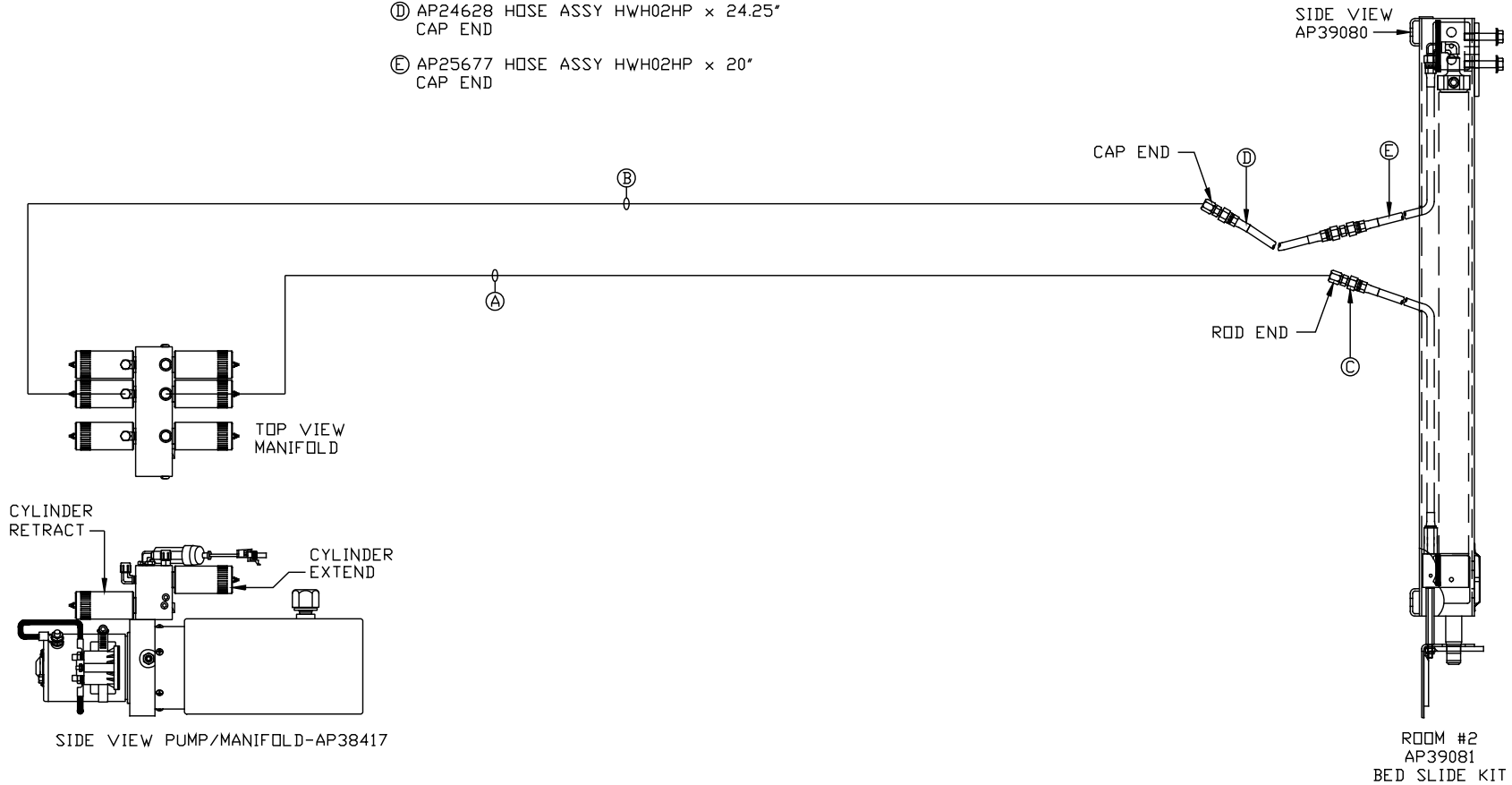


ORIENTATION

← FRONT

NOTE: HOSES (C), (D) AND (E) ARE INCLUDED WITH THE ROOM EXTENSION MECHANISM

- (A) AP4904 HOSE ASSY .25" x 306"
ROD END - ALWAYS PRESSURIZED
- (B) AP4064 HOSE ASSY .25 x 300"
CAP END
- (C) AP24632 HOSE ASSY HWH02HP x 48"
ROD END - ALWAYS PRESSURIZED
- (D) AP24628 HOSE ASSY HWH02HP x 24.25"
CAP END
- (E) AP25677 HOSE ASSY HWH02HP x 20"
CAP END



NOTE: INSTALLATION MUST CONFORM TO GOOD SHOP PRACTICES, SAE STANDARDS, RVIA STANDARDS, AND OTHER APPLICABLE STANDARDS.

MP70558 C/C
12JUL12