

ORIENTATION
 ← FRONT

GEN SLIDE
 FUNCTION 4
 "A" ROOM

AP39732
 UNIVERSAL STRAIGHT OUT
 FUNCTION 3
 "B" ROOM

AP38103
 PUMP/MANIFOLD

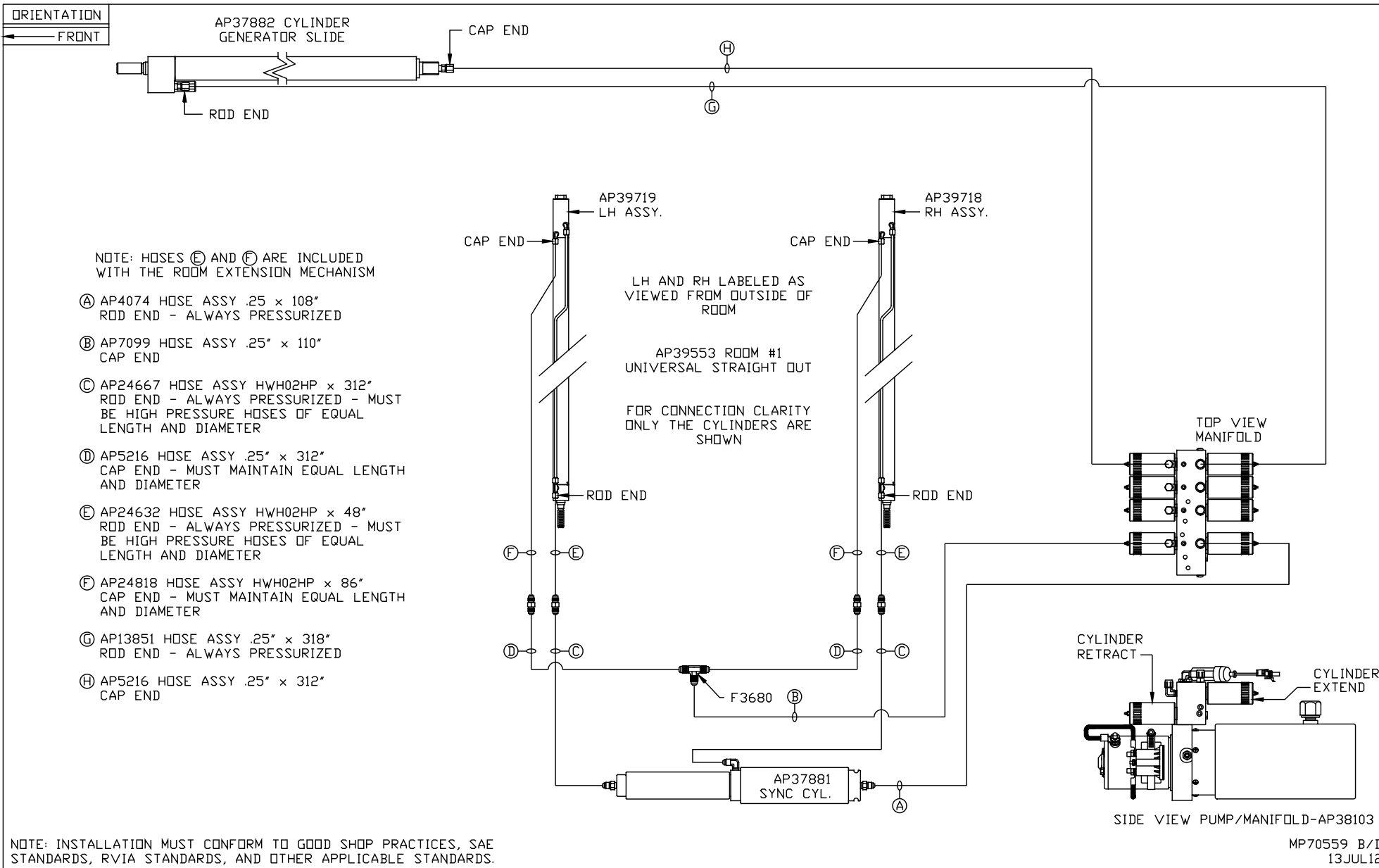
AP39553
 UNIVERSAL STRAIGHT OUT
 FUNCTION 1
 "B" ROOM

AP39081
 BED SLIDE
 FUNCTION 2
 "A" ROOM

NOTE: INSTALLATION MUST CONFORM TO GOOD SHOP PRACTICES, SAE STANDARDS, RVIA STANDARDS, AND OTHER APPLICABLE STANDARDS.

LEVELING SYSTEM: AP44527

		HWH		I-80 EXIT 267 SOUTH RT 1 MOSCOW, IOWA 52760	
		SCALE 1:6	DATE 13JUL12	DRAWN BY .	
△	01FEB13	WAS AP39733 & AP39734		HYD CONN DIAGRAM	
NO.	DATE	REVISION			
THE INFORMATION DISCLOSED ON THIS DRAWING IS CONFIDENTIAL AND MUST NOT BE DISCLOSED OR USED IN ANY MANNER WHICH WILL BE DETRIMENTAL TO THE HWH CORPORATION				DRAWING NUMBER	
				MP70559 A/D	
				FORETRAVEL	



NOTE: INSTALLATION MUST CONFORM TO GOOD SHOP PRACTICES, SAE STANDARDS, RVIA STANDARDS, AND OTHER APPLICABLE STANDARDS.

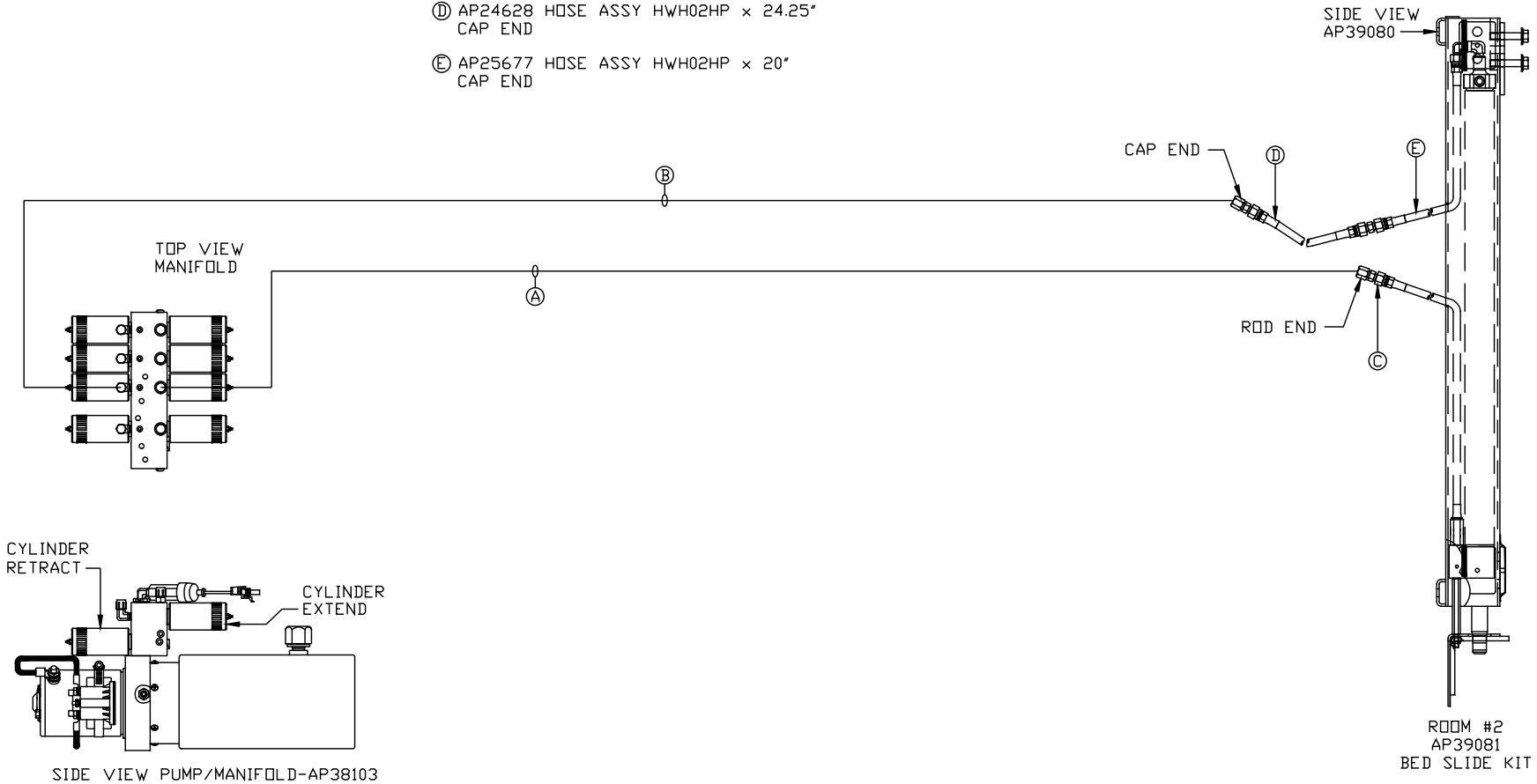
MP70559 B/D
13JUL12

ORIENTATION

← FRONT

NOTE: HOSES (C), (D) AND (E) ARE INCLUDED WITH THE ROOM EXTENSION MECHANISM

- (A) AP4164 HOSE ASSY .25 x 384"
ROD END - ALWAYS PRESSURIZED
- (B) AP4391 HOSE ASSY .25 x 372"
CAP END
- (C) AP24632 HOSE ASSY HWH02HP x 48"
ROD END - ALWAYS PRESSURIZED
- (D) AP24628 HOSE ASSY HWH02HP x 24.25"
CAP END
- (E) AP25677 HOSE ASSY HWH02HP x 20"
CAP END



NOTE: INSTALLATION MUST CONFORM TO GOOD SHOP PRACTICES, SAE STANDARDS, RVIA STANDARDS, AND OTHER APPLICABLE STANDARDS.

MP70559 C/D
13JUL12

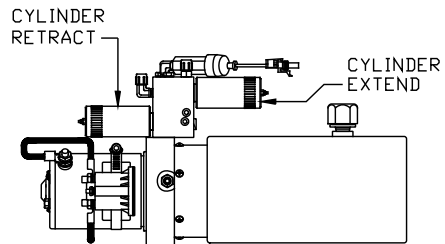
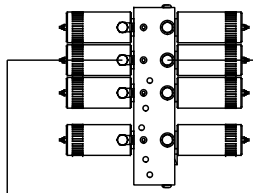
ORIENTATION

← FRONT

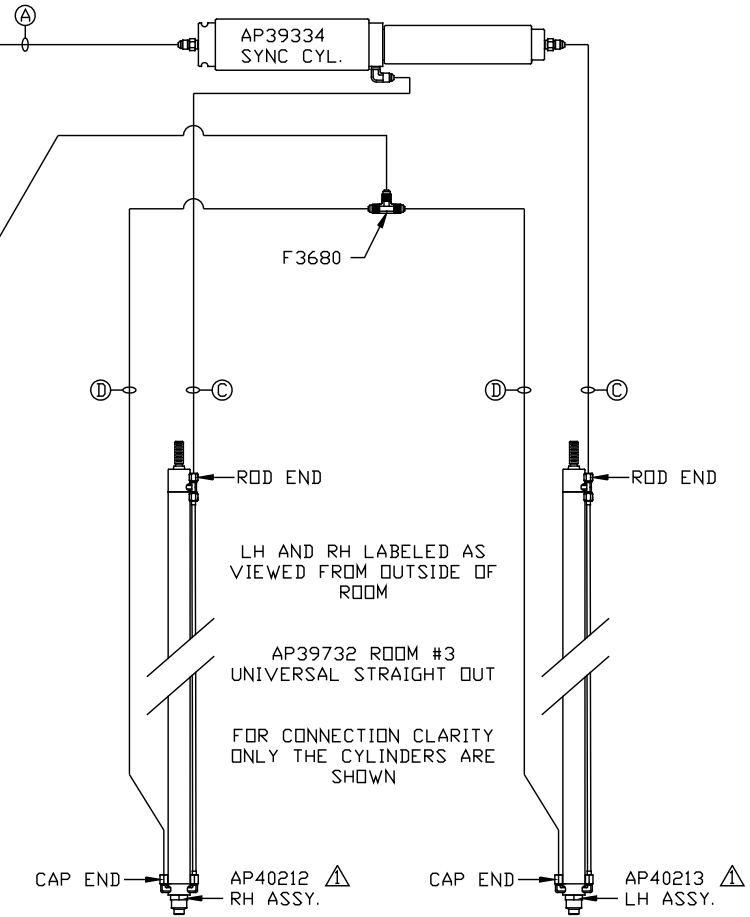
NOTE: HOSES ③ AND ④ ARE INCLUDED WITH THE ROOM EXTENSION MECHANISM

- ① AP4064 HOSE ASSY .25 x 300"
WAS AP24672 HOSE ASSY HWH02HP x 372"
ROD END - ALWAYS PRESSURIZED
- ② AP4904 HOSE ASSY .25 x 306"
WAS AP4391 HOSE ASSY .25 x 372"
CAP END
- ③ AP25086 HOSE ASSY HWH02HP x 78"
WAS AP24631 HOSE ASSY HWH02HP x 42"
ROD END - ALWAYS PRESSURIZED - MUST BE HIGH PRESSURE HOSES OF EQUAL LENGTH AND DIAMETER
- ④ AP24819 HOSE ASSY HWH02HP x 100"
WAS AP24637 HOSE ASSY HWH02HP x 66"
CAP END - MUST MAINTAIN EQUAL LENGTH AND DIAMETER

TOP VIEW
MANIFOLD



SIDE VIEW PUMP/MANIFOLD-AP38103



NOTE: INSTALLATION MUST CONFORM TO GOOD SHOP PRACTICES, SAE STANDARDS, RVIA STANDARDS, AND OTHER APPLICABLE STANDARDS.

MP70559 D/D
01FEB13