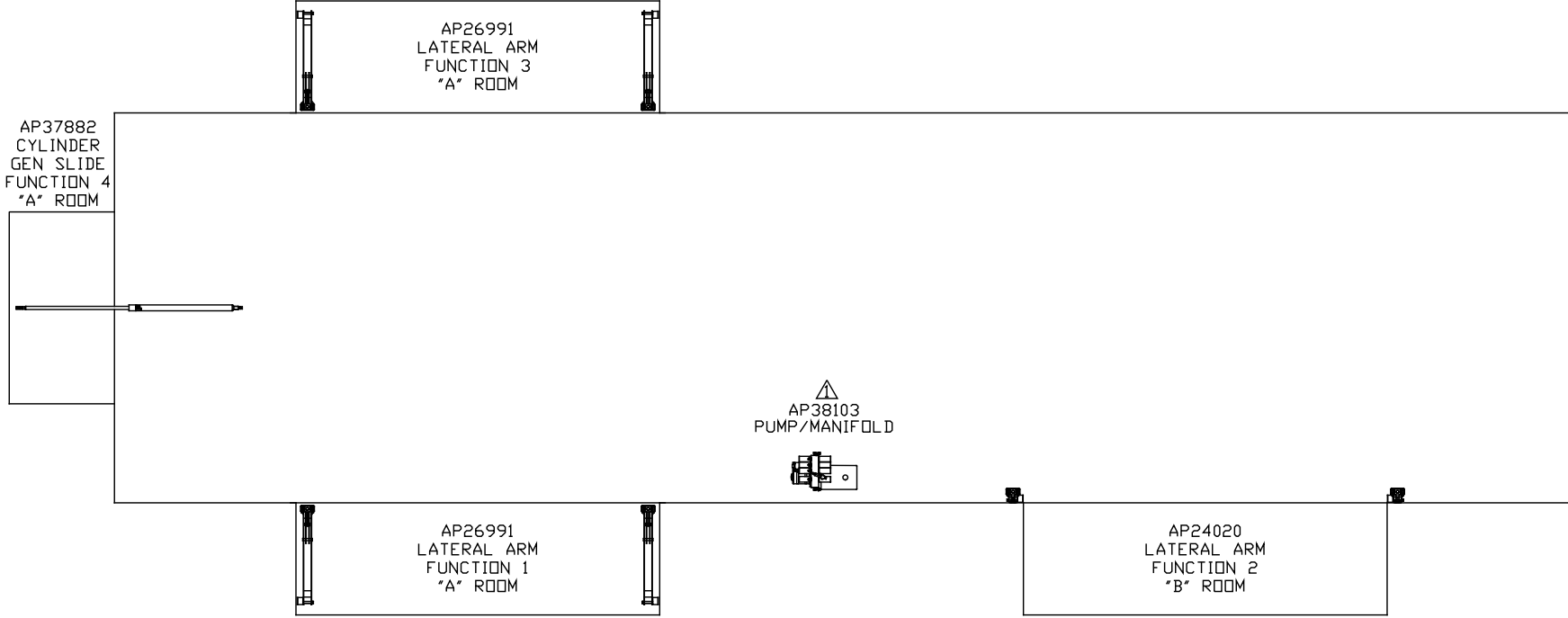


ORIENTATION
 ← FRONT



NOTE: INSTALLATION MUST CONFORM TO GOOD SHOP PRACTICES, SAE STANDARDS, RVIA STANDARDS, AND OTHER APPLICABLE STANDARDS.

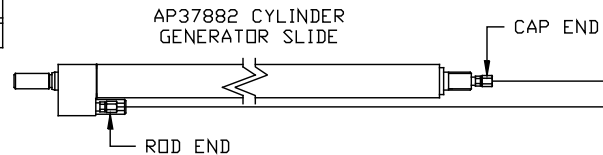
LEVELING SYSTEM: AP44744
 CONVERTED FROM AP37800

THE INFORMATION DISCLOSED ON THIS DRAWING IS CONFIDENTIAL AND MUST NOT BE DISCLOSED OR USED IN ANY MANNER WHICH WILL BE DETRIMENTAL TO THE HWH CORPORATION

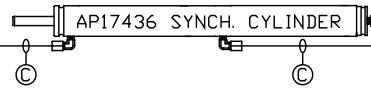
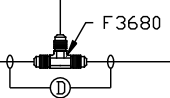
△	01FEB13	WAS AP34209
NO.	DATE	REVISION

HWH			I-80 EXIT 267 SOUTH RT 1 MOSCOW, IOWA 52760		
SCALE 1:6	DATE 13JUL12	DRAWN BY .			
HYD CONN DIAGRAM					
FORETRAVEL				DRAWING NUMBER MP70560 A/D	

ORIENTATION
 ← FRONT



F
 E



- Ⓐ AP4074 HOSE ASSY .25 x 108"
 WAS AP24632 HOSE ASSY HWH02HP x 48"
 ROD END - ALWAYS PRESSURIZED
- Ⓑ AP7099 HOSE ASSY .25 x 110"
 WAS AP3314 HOSE ASSY .25 x 48"
 CAP END
- Ⓒ AP24667 HOSE ASSY HWH02HP x 312"
 ROD END - ALWAYS PRESSURIZED - MUST
 BE HIGH PRESSURE HOSES OF EQUAL
 LENGTH AND DIAMETER
- Ⓓ AP5216 HOSE ASSY .25 x 312"
 CAP END - MUST MAINTAIN EQUAL LENGTH
 AND DIAMETER
- Ⓔ AP13851 HOSE ASSY .25" X 318"
 AP24667 HOSE ASSY HWH02HP x 312"
 ROD END - ALWAYS PRESSURIZED
- Ⓕ AP5216 HOSE ASSY .25 x 312"
 CAP END

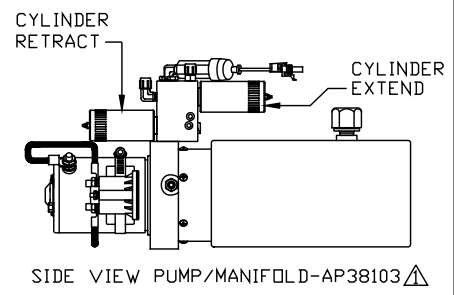
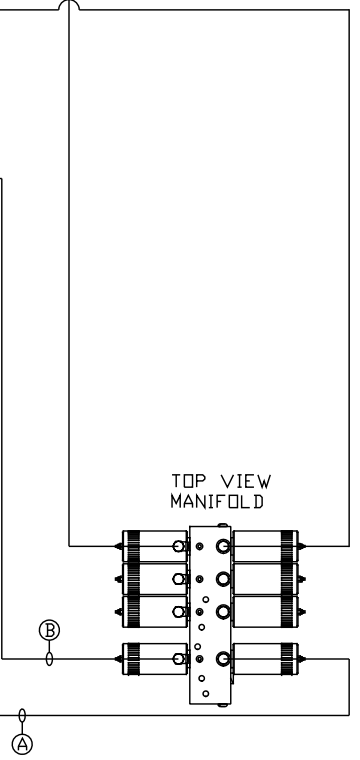
ROD END CAP END

ROD END CAP END

ROOM #1
 AP26991
 LATERAL ARM
 FOR CONNECTION CLARITY
 CYLINDERS ONLY ARE SHOWN.
 NOTE: THIS ROOM IS LABELED LEFT
 AND RIGHT AS VIEWED FROM INSIDE
 THE COACH

AP26993
 RH ASSY.

AP26992
 LH ASSY.



NOTE: INSTALLATION MUST CONFORM TO GOOD SHOP PRACTICES, SAE STANDARDS, RVIA STANDARDS, AND OTHER APPLICABLE STANDARDS.

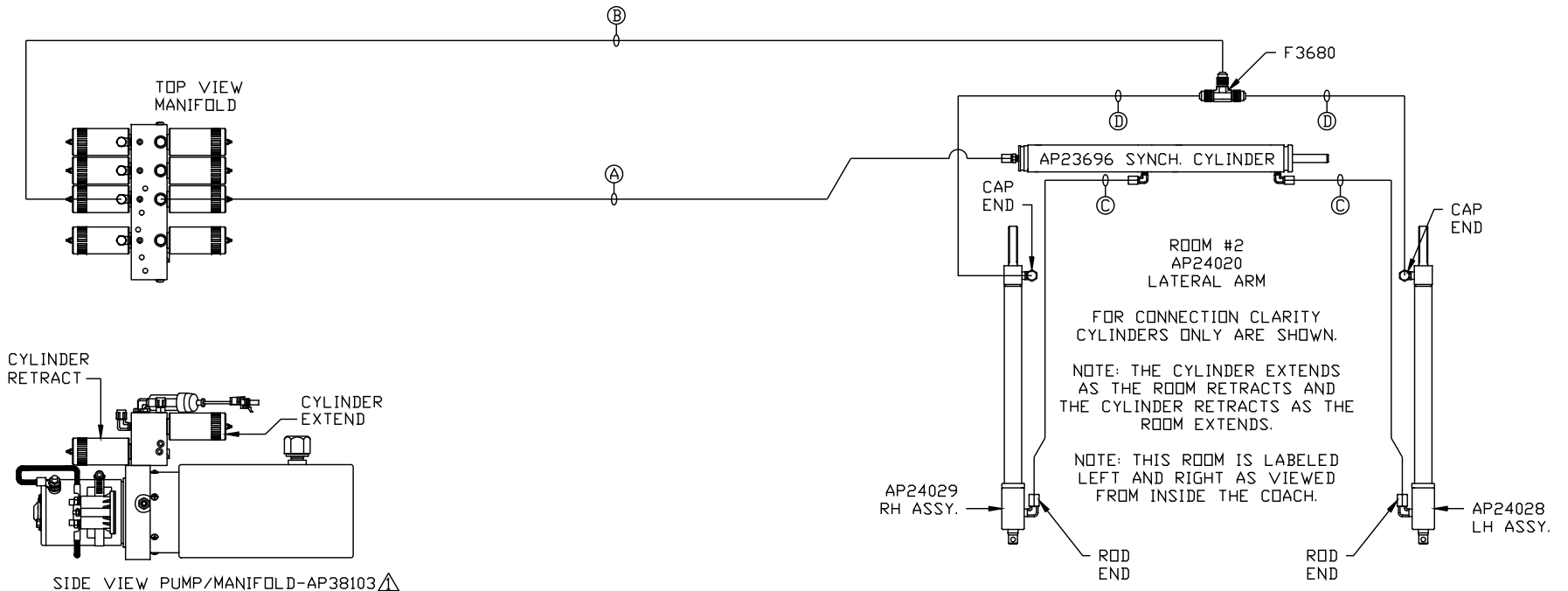
MP70560 B/D
 01FEB13

ORIENTATION

← FRONT

NOTE: HOSES ③ AND ④ ARE INCLUDED WITH THE ROOM EXTENSION MECHANISM

- ① AP4064 HOSE ASSY .25" X 300"
WAS AP24666 HOSE ASSY HWH02HP X 300"
ROD END - ALWAYS PRESSURIZED
- ② AP4904 HOSE ASSY .25" X 306"
WAS AP4064 HOSE ASSY .25 X 300"
CAP END
- ③ AP24632 HOSE ASSY HWH02HP X 48"
ROD END - ALWAYS PRESSURIZED - MUST BE HIGH PRESSURE HOSES OF EQUAL LENGTH AND DIAMETER
- ④ AP24632 HOSE ASSY HWH02HP X 48"
CAP END - MUST MAINTAIN EQUAL LENGTH AND DIAMETER

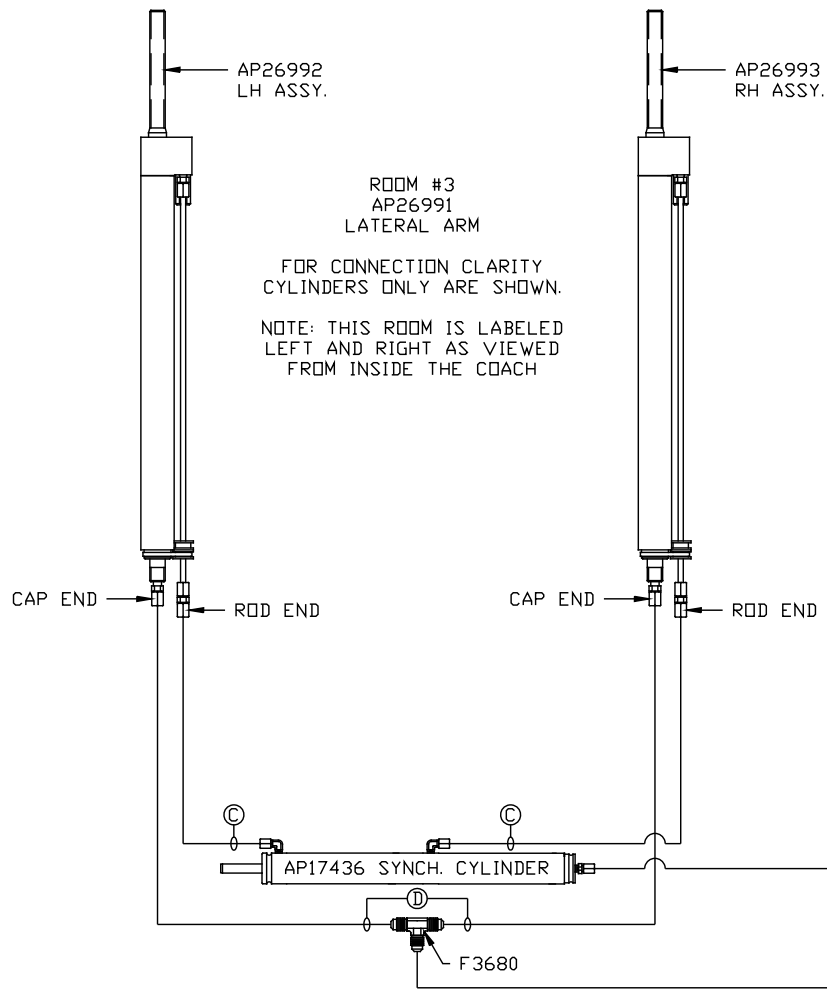


NOTE: INSTALLATION MUST CONFORM TO GOOD SHOP PRACTICES, SAE STANDARDS, RVIA STANDARDS, AND OTHER APPLICABLE STANDARDS.

MP70560 C/D
01FEB13

ORIENTATION

← FRONT

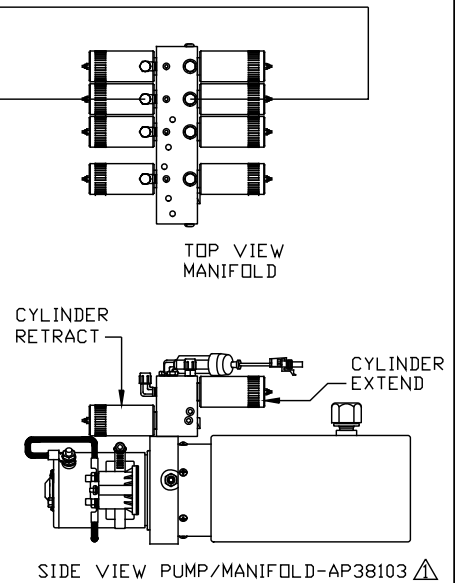


ROOM #3
AP26991
LATERAL ARM

FOR CONNECTION CLARITY
CYLINDERS ONLY ARE SHOWN.

NOTE: THIS ROOM IS LABELED
LEFT AND RIGHT AS VIEWED
FROM INSIDE THE COACH

- Ⓐ AP4074 HOSE ASSY .25 x 108"
WAS AP24632 HOSE ASSY HWH02HP x 48"
ROD END - ALWAYS PRESSURIZED
- Ⓑ AP7099 HOSE ASSY .25 x 110"
WAS AP3314 HOSE ASSY .25 x 48"
CAP END
- Ⓒ AP24667 HOSE ASSY HWH02HP x 312"
ROD END - ALWAYS PRESSURIZED - MUST
BE HIGH PRESSURE HOSES OF EQUAL
LENGTH AND DIAMETER
- Ⓓ AP5216 HOSE ASSY .25 x 312"
CAP END - MUST MAINTAIN EQUAL LENGTH
AND DIAMETER



NOTE: INSTALLATION MUST CONFORM TO GOOD SHOP PRACTICES, SAE
STANDARDS, RVIA STANDARDS, AND OTHER APPLICABLE STANDARDS.

MP70560 D/D
01FEB13