

ORIENTATION  
 ← FRONT

GEN SLIDE  
 FUNCTION 4  
 "A" ROOM

AP39725  
 UINVERSAL STRAIGHT OUT  
 FUNCTION 3  
 "B" ROOM

AP38103  
 PUMP/MANIFOLD

AP39553  
 UINVERSAL STRAIGHT OUT  
 FUNCTION 1  
 "B" ROOM

AP39081  
 BED SLIDE  
 FUNCTION 2  
 "A" ROOM

NOTE: INSTALLATION MUST CONFORM TO GOOD SHOP PRACTICES, SAE STANDARDS, RVIA STANDARDS, AND OTHER APPLICABLE STANDARDS.

LEVELING SYSTEM: AP45375

NO.	DATE	REVISION

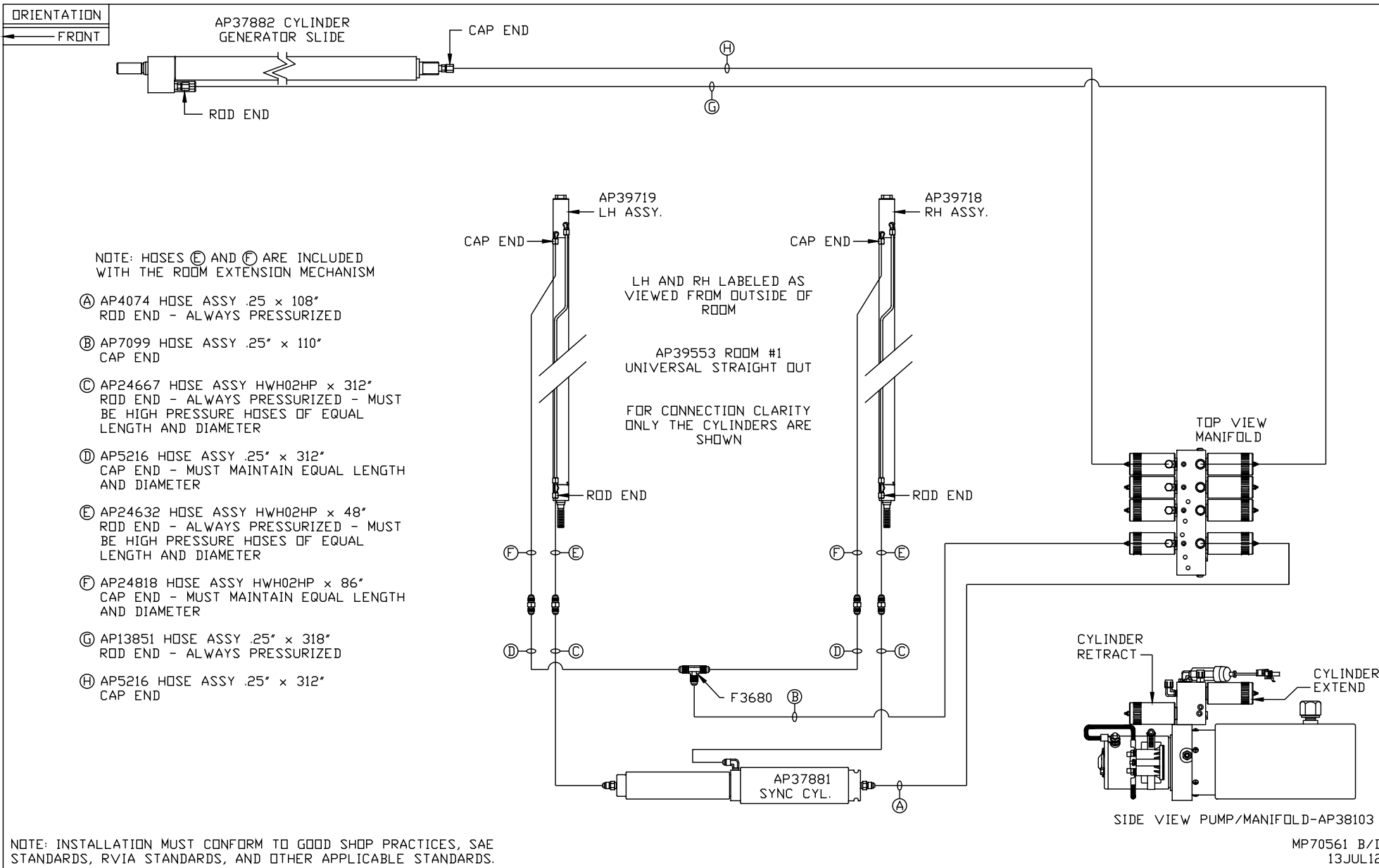
HWH I-80 EXIT 267 SOUTH  
 RT 1 MOSCOW, IOWA 52760  
 SCALE 1:6 DATE 13JUL12 DRAWN BY .

HYD CONN DIAGRAM

THE INFORMATION DISCLOSED ON THIS DRAWING IS CONFIDENTIAL AND MUST NOT BE DISCLOSED OR USED IN ANY MANNER WHICH WILL BE DETRIMENTAL TO THE HWH CORPORATION

FORETRAVEL

DRAWING NUMBER  
 MP70561 A/D

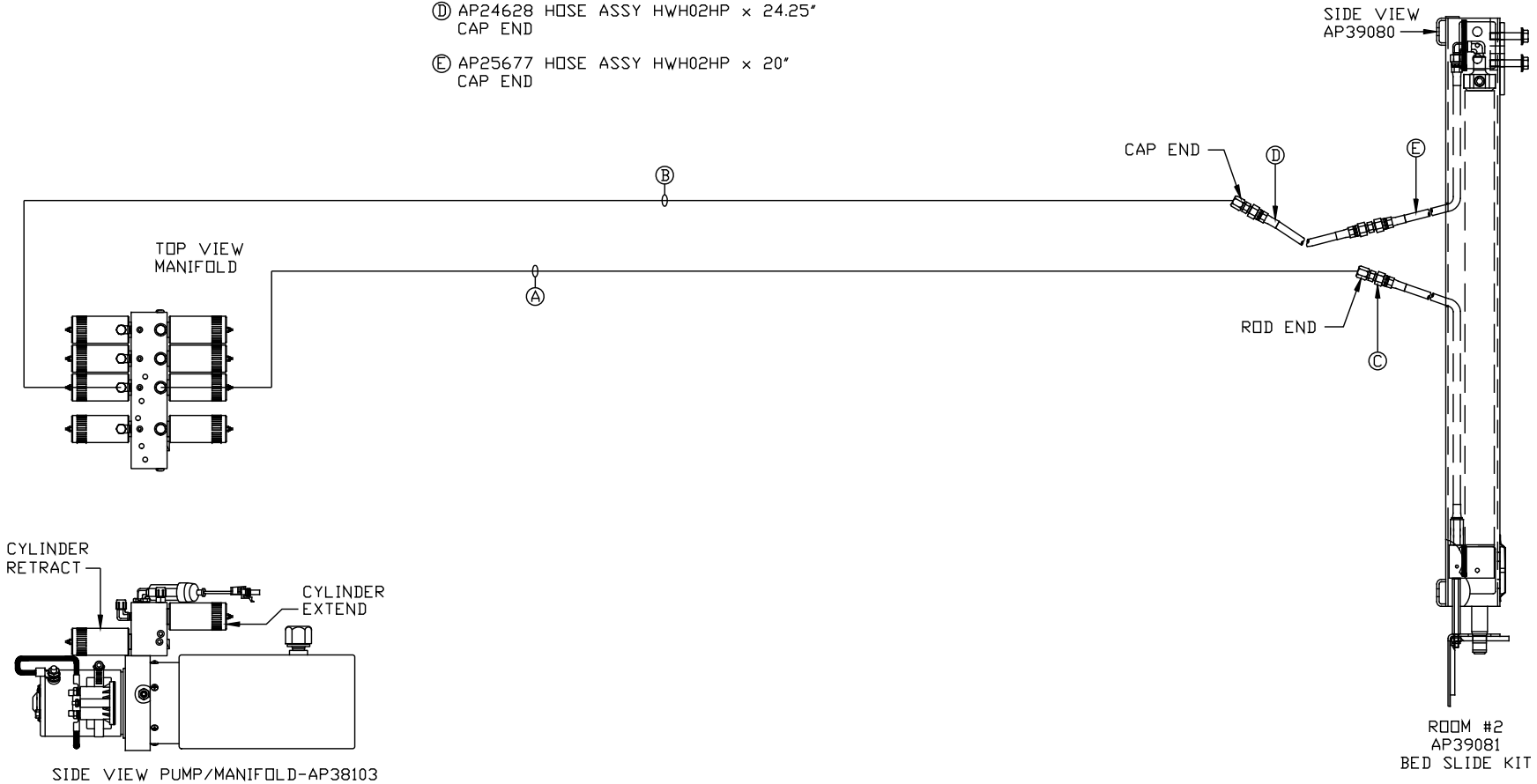


ORIENTATION

← FRONT

NOTE: HOSES (C), (D) AND (E) ARE INCLUDED WITH THE ROOM EXTENSION MECHANISM

- (A) AP4904 HOSE ASSY .25 x 306"  
ROD END - ALWAYS PRESSURIZED
- (B) AP4064 HOSE ASSY .25 x 300"  
CAP END
- (C) AP24632 HOSE ASSY HWH02HP x 48"  
ROD END - ALWAYS PRESSURIZED
- (D) AP24628 HOSE ASSY HWH02HP x 24.25"  
CAP END
- (E) AP25677 HOSE ASSY HWH02HP x 20"  
CAP END



NOTE: INSTALLATION MUST CONFORM TO GOOD SHOP PRACTICES, SAE STANDARDS, RVIA STANDARDS, AND OTHER APPLICABLE STANDARDS.

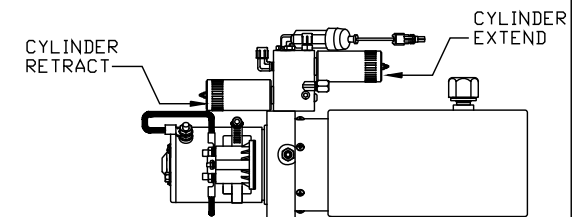
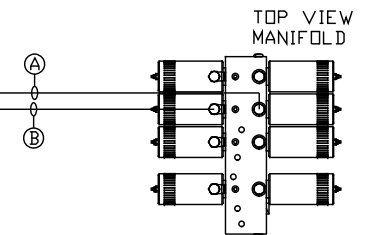
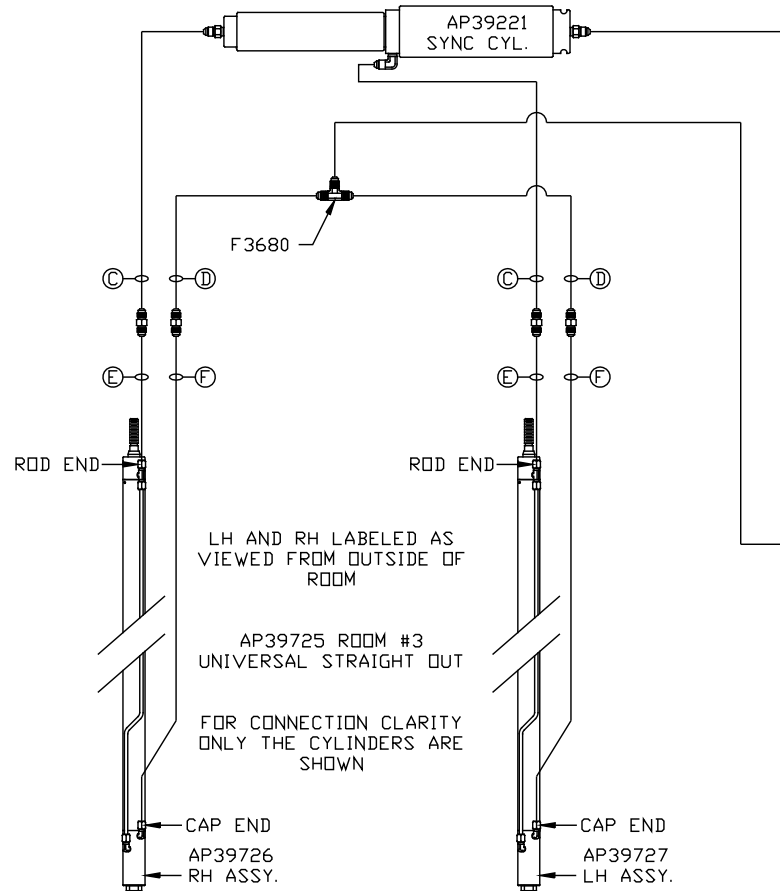
MP70561 C/D  
13JUL12

ORIENTATION

← FRONT

NOTE: HOSES (E) AND (F) ARE INCLUDED WITH THE ROOM EXTENSION MECHANISM

- (A) AP4074 HOSE ASSY .25" x 108"  
ROD END - ALWAYS PRESSURIZED
- (B) AP7099 HOSE ASSY .25" x 110"  
CAP END
- (C) AP24667 HOSE ASSY HWH02HP x 312"  
ROD END - ALWAYS PRESSURIZED - MUST BE HIGH PRESSURE HOSES OF EQUAL LENGTH AND DIAMETER
- (D) AP5216 HOSE ASSY .25" x 312"  
CAP END - MUST MAINTAIN EQUAL LENGTH AND DIAMETER
- (E) AP24632 HOSE ASSY HWH02HP x 48"  
ROD END - ALWAYS PRESSURIZED - MUST BE HIGH PRESSURE HOSES OF EQUAL LENGTH AND DIAMETER
- (F) AP24818 HOSE ASSY HWH02HP x 86"  
CAP END - MUST MAINTAIN EQUAL LENGTH AND DIAMETER



NOTE: INSTALLATION MUST CONFORM TO GOOD SHOP PRACTICES, SAE STANDARDS, RVIA STANDARDS, AND OTHER APPLICABLE STANDARDS.

MP70561 D/D  
13JUL12