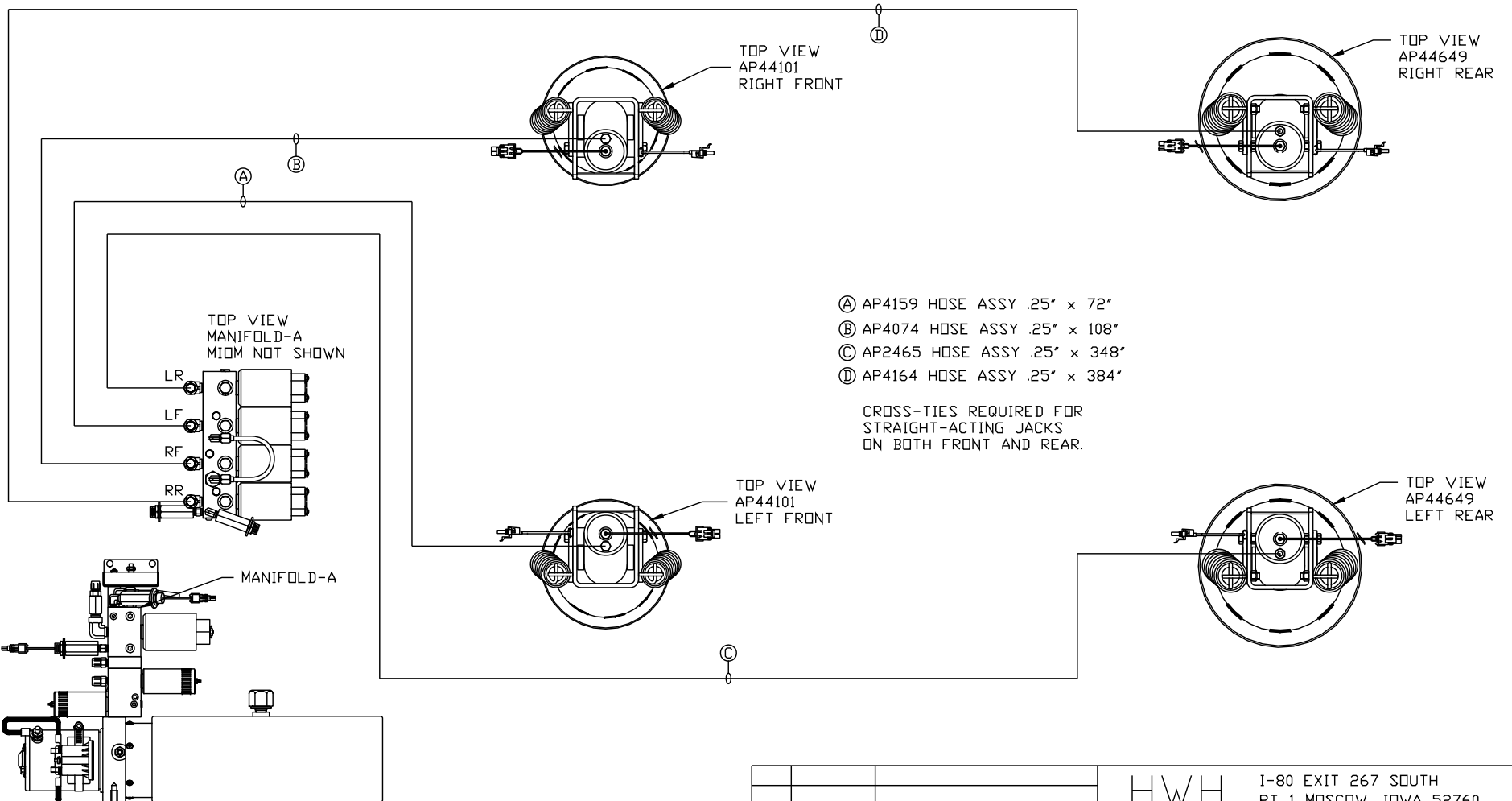


ORIENTATION
← FRONT



TOP VIEW
MANIFOLD-A
MIDM NOT SHOWN

LR
LF
RF
RR

MANIFOLD-A

SIDE VIEW PUMP/MANIFOLD-AP48130

LOCATION AND ORIENTATION OF
PUMP/MANIFOLD ASSEMBLY WILL
DIFFER DEPENDING UPON O.E.M.

TOP VIEW
AP44101
RIGHT FRONT

TOP VIEW
AP44649
RIGHT REAR

TOP VIEW
AP44101
LEFT FRONT

TOP VIEW
AP44649
LEFT REAR

- Ⓐ AP4159 HOSE ASSY .25" x 72"
- Ⓑ AP4074 HOSE ASSY .25" x 108"
- Ⓒ AP2465 HOSE ASSY .25" x 348"
- Ⓓ AP4164 HOSE ASSY .25" x 384"

CROSS-TIES REQUIRED FOR
STRAIGHT-ACTING JACKS
ON BOTH FRONT AND REAR.

NOTE: INSTALLATION MUST CONFORM TO GOOD SHOP PRACTICES, SAE STANDARDS, RVIA STANDARDS, AND OTHER APPLICABLE STANDARDS.



SYNC KIT: AP48754

PUMP KIT: AP48122

JACK KIT: AP48362

⚠	06MAY15	WAS AP48797, UP'D HOSES
NO.	DATE	REVISION

THE INFORMATION DISCLOSED ON THIS DRAWING IS CONFIDENTIAL AND MUST NOT BE DISCLOSED OR USED IN ANY MANNER WHICH WILL BE DETRIMENTAL TO THE HWH CORPORATION

HWH I-80 EXIT 267 SOUTH
RT 1 MOSCOW, IOWA 52760

SCALE 1:6 DATE 03AUG12 DRAWN BY .

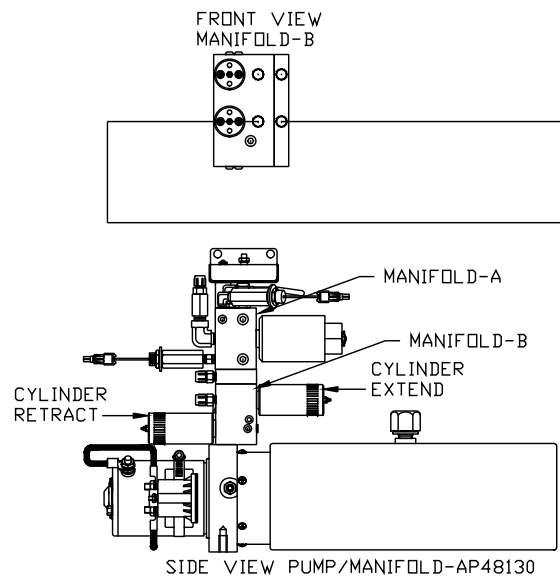
HYD CONN DIAGRAM

TIFFIN

DRAWING NUMBER
MP70570 A/C

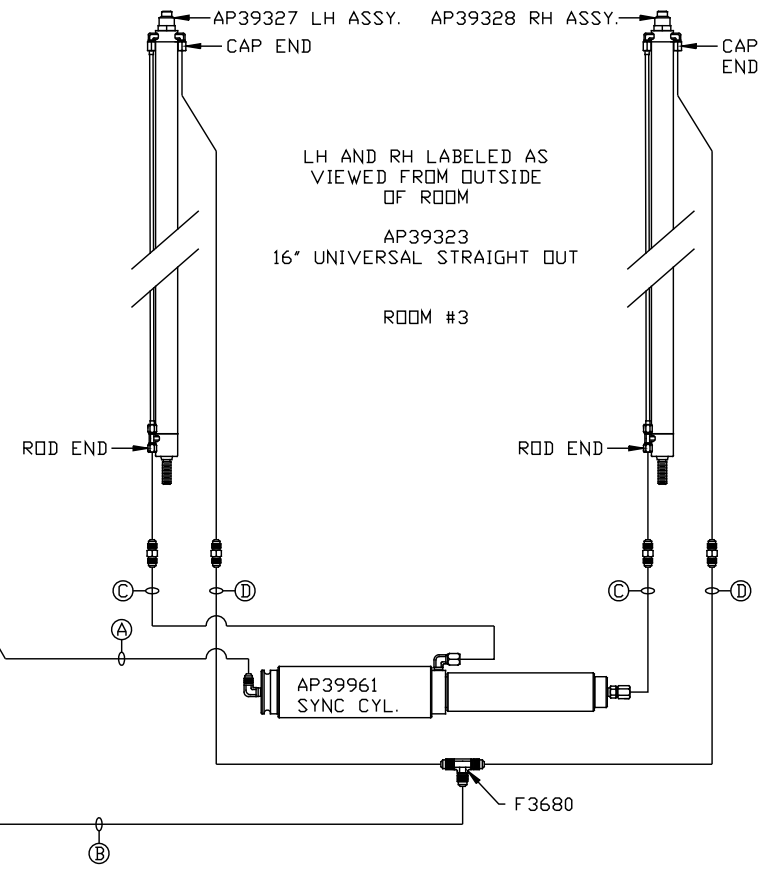
ORIENTATION
 ← FRONT

- Ⓐ AP4391 HOSE ASSY .25" x 372"
ROD END - ALWAYS PRESSURIZED
- Ⓑ AP4313 HOSE ASSY .25" x 396"
CAP END
- Ⓒ AP49962 HOSE ASSY 03 x 150" MF
WAS AP24653 HOSE ASSY HWH02HP x 204"
ROD END - ALWAYS PRESSURIZED - MUST
BE HIGH PRESSURE HOSES OF EQUAL
LENGTH AND DIAMETER
- Ⓓ AP1410 HOSE ASSY .25" x 139"
WAS AP4310 HOSE ASSY .25" x 204"
CAP END - MUST MAINTAIN EQUAL LENGTH
AND DIAMETER



LOCATION AND ORIENTATION OF
 PUMP/MANIFOLD ASSEMBLY WILL
 DIFFER DEPENDING UPON O.E.M.

NOTE: INSTALLATION MUST CONFORM TO GOOD SHOP PRACTICES, SAE
 STANDARDS, RVIA STANDARDS, AND OTHER APPLICABLE STANDARDS.

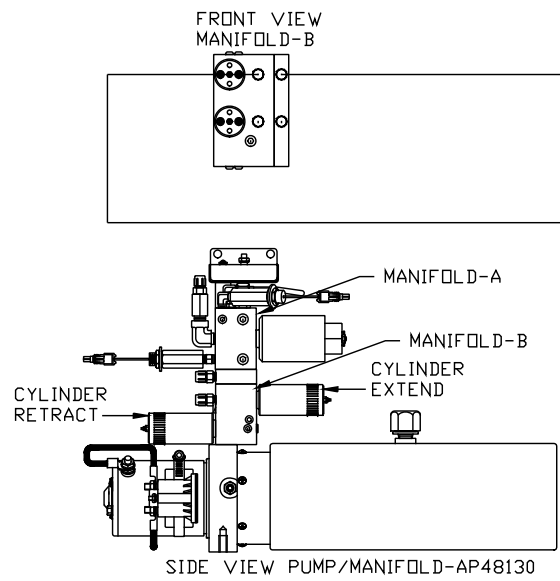


MP70570 B/C
 06MAY15

ORIENTATION

← FRONT

- Ⓐ AP50598 HOSE ASSY 03 x 372"
WAS AP4391 HOSE ASSY .25" x 372"
ROD END - ALWAYS PRESSURIZED
- Ⓑ AP10256 HOSE ASSY .25" x 366"
WAS AP4313 HOSE ASSY .25" x 396"
CAP END
- Ⓒ AP50164 HOSE ASSY 03 x 222" MF
WAS AP24653 HOSE ASSY HWH02HP x 204"
ROD END - ALWAYS PRESSURIZED - MUST
BE HIGH PRESSURE HOSES OF EQUAL
LENGTH AND DIAMETER
- Ⓓ AP50163 HOSE ASSY .25" x 222"
WAS AP4310 HOSE ASSY .25" x 204"
CAP END - MUST MAINTAIN EQUAL LENGTH
AND DIAMETER



LOCATION AND ORIENTATION OF
PUMP/MANIFOLD ASSEMBLY WILL
DIFFER DEPENDING UPON O.E.M.

NOTE: INSTALLATION MUST CONFORM TO GOOD SHOP PRACTICES, SAE
STANDARDS, RVIA STANDARDS, AND OTHER APPLICABLE STANDARDS.

