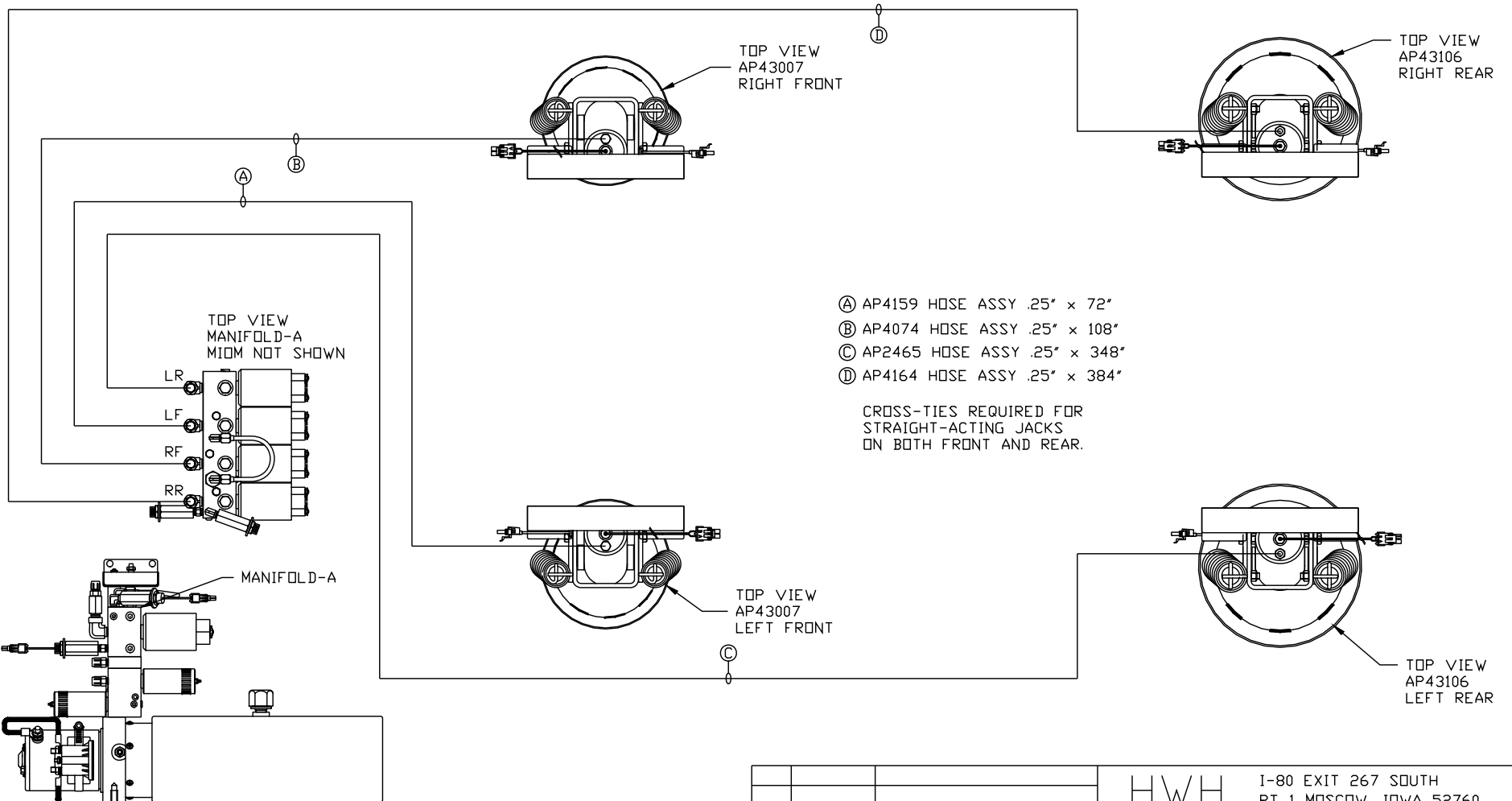


ORIENTATION  
← FRONT



TOP VIEW  
MANIFOLD-A  
MIDM NOT SHOWN

LR  
LF  
RF  
RR

MANIFOLD-A

SIDE VIEW PUMP/MANIFOLD-AP48130

LOCATION AND ORIENTATION OF  
PUMP/MANIFOLD ASSEMBLY WILL  
DIFFER DEPENDING UPON O.E.M.

- Ⓐ AP4159 HOSE ASSY .25" x 72"
- Ⓑ AP4074 HOSE ASSY .25" x 108"
- Ⓒ AP2465 HOSE ASSY .25" x 348"
- Ⓓ AP4164 HOSE ASSY .25" x 384"

CROSS-TIES REQUIRED FOR  
STRAIGHT-ACTING JACKS  
ON BOTH FRONT AND REAR.

NOTE: INSTALLATION MUST CONFORM TO GOOD SHOP PRACTICES, SAE STANDARDS, RVIA STANDARDS, AND OTHER APPLICABLE STANDARDS.



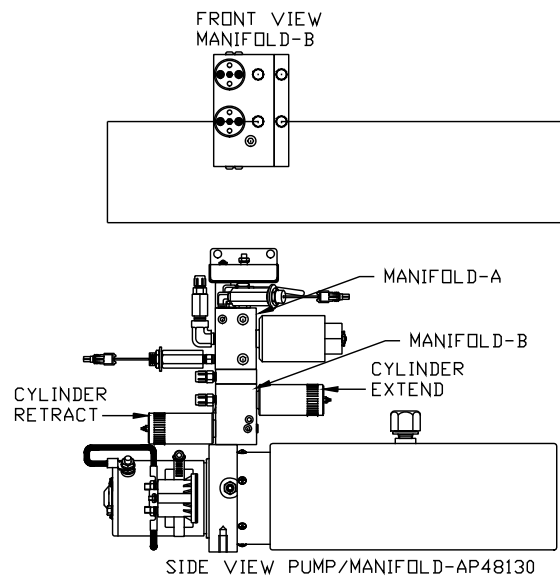
SYNC KIT: AP48754	NO.	DATE	REVISION
PUMP KIT: AP48122			
JACK KIT: AP48363			

06MAY15	WAS AP48797, UP'D HOSES

HWH			I-80 EXIT 267 SOUTH RT 1 MOSCOW, IOWA 52760		
SCALE 1:6	DATE 03AUG12	DRAWN BY .			
HYD CONN DIAGRAM					
TIFFIN				DRAWING NUMBER MP70571 A/C	

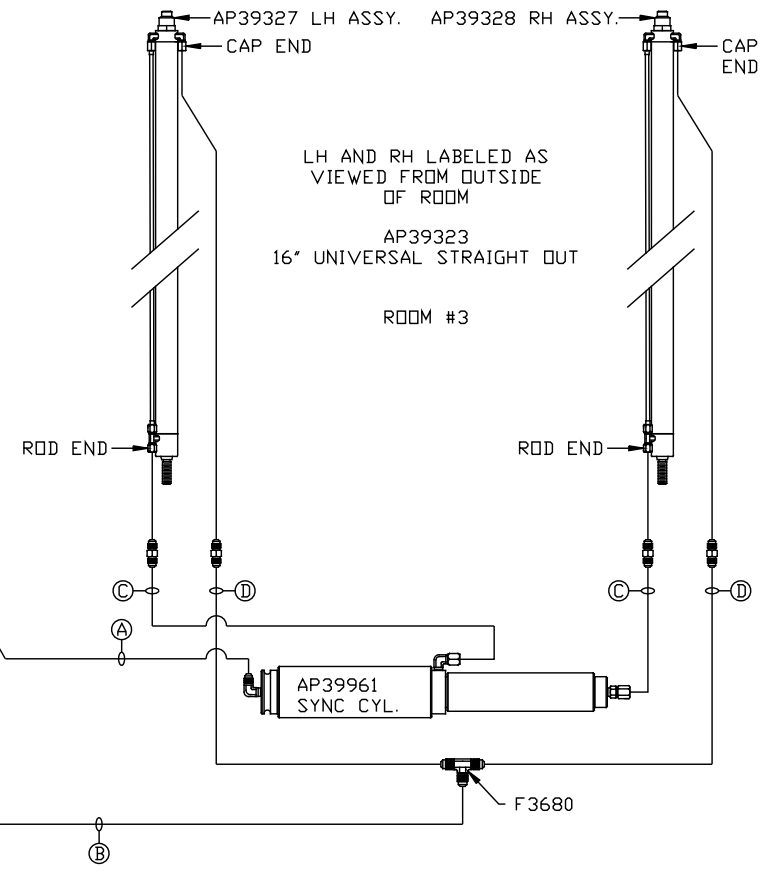
ORIENTATION  
 ← FRONT

- Ⓐ AP4391 HOSE ASSY .25" x 372"  
ROD END - ALWAYS PRESSURIZED
- Ⓑ AP4313 HOSE ASSY .25" x 396"  
CAP END
- Ⓒ AP49962 HOSE ASSY 03 x 150" MF  
WAS AP24653 HOSE ASSY HWH02HP x 204"  
ROD END - ALWAYS PRESSURIZED - MUST  
BE HIGH PRESSURE HOSES OF EQUAL  
LENGTH AND DIAMETER
- Ⓓ AP1410 HOSE ASSY .25" x 139"  
WAS AP4310 HOSE ASSY .25" x 204"  
CAP END - MUST MAINTAIN EQUAL LENGTH  
AND DIAMETER



LOCATION AND ORIENTATION OF  
 PUMP/MANIFOLD ASSEMBLY WILL  
 DIFFER DEPENDING UPON O.E.M.

NOTE: INSTALLATION MUST CONFORM TO GOOD SHOP PRACTICES, SAE  
 STANDARDS, RVIA STANDARDS, AND OTHER APPLICABLE STANDARDS.

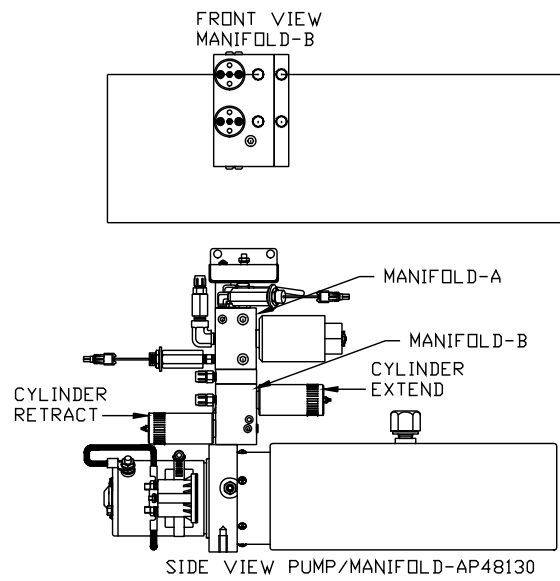


MP70571 B/C  
 06MAY15

ORIENTATION

← FRONT

- Ⓐ AP50598 HOSE ASSY 03 x 372"  
WAS AP4391 HOSE ASSY .25" x 372"  
ROD END - ALWAYS PRESSURIZED
- Ⓑ AP10256 HOSE ASSY .25" x 366"  
WAS AP4313 HOSE ASSY .25" x 396"  
CAP END
- Ⓒ AP50164 HOSE ASSY 03 x 222" MF  
WAS AP24653 HOSE ASSY HWH02HP x 204"  
ROD END - ALWAYS PRESSURIZED - MUST  
BE HIGH PRESSURE HOSES OF EQUAL  
LENGTH AND DIAMETER
- Ⓓ AP50163 HOSE ASSY .25" x 222"  
WAS AP4310 HOSE ASSY .25" x 204"  
CAP END - MUST MAINTAIN EQUAL LENGTH  
AND DIAMETER



LOCATION AND ORIENTATION OF  
PUMP/MANIFOLD ASSEMBLY WILL  
DIFFER DEPENDING UPON O.E.M.

NOTE: INSTALLATION MUST CONFORM TO GOOD SHOP PRACTICES, SAE  
STANDARDS, RVIA STANDARDS, AND OTHER APPLICABLE STANDARDS.

