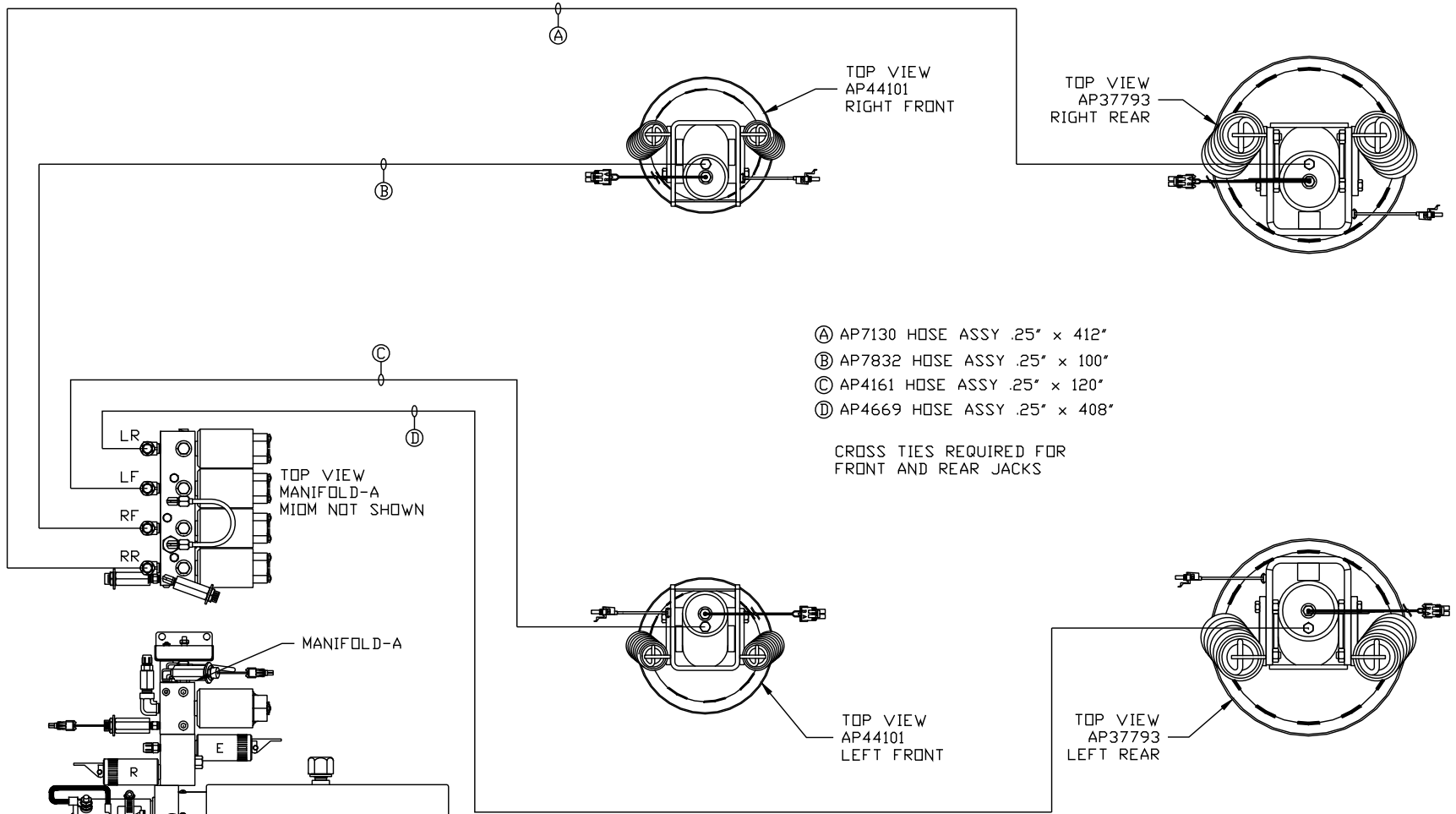
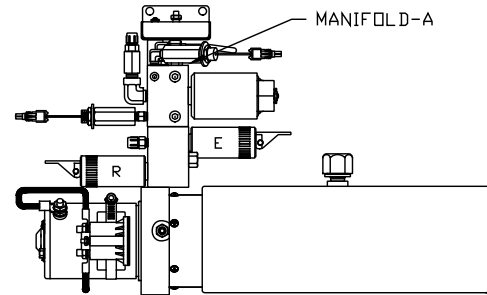


ORIENTATION
← FRONT



- Ⓐ AP7130 HOSE ASSY .25" x 412"
- Ⓑ AP7832 HOSE ASSY .25" x 100"
- Ⓒ AP4161 HOSE ASSY .25" x 120"
- Ⓓ AP4669 HOSE ASSY .25" x 408"

CROSS TIES REQUIRED FOR FRONT AND REAR JACKS



SIDE VIEW PUMP/MANIFOLD-AP48368

LOCATION AND ORIENTATION OF PUMP/MANIFOLD ASSEMBLY WILL DIFFER DEPENDING UPON O.E.M.

NOTE: INSTALLATION MUST CONFORM TO GOOD SHOP PRACTICES, SAE STANDARDS, RVIA STANDARDS, AND OTHER APPLICABLE STANDARDS.

NO.	DATE	REVISION

SYNC KIT: AP48798
 PUMP KIT: AP48367
 JACK KIT: AP48120

HWH I-80 EXIT 267 SOUTH
 RT 1 MOSCOW, IOWA 52760

SCALE 1:6 DATE 03AUG12 DRAWN BY .

HYD CONN DIAGRAM

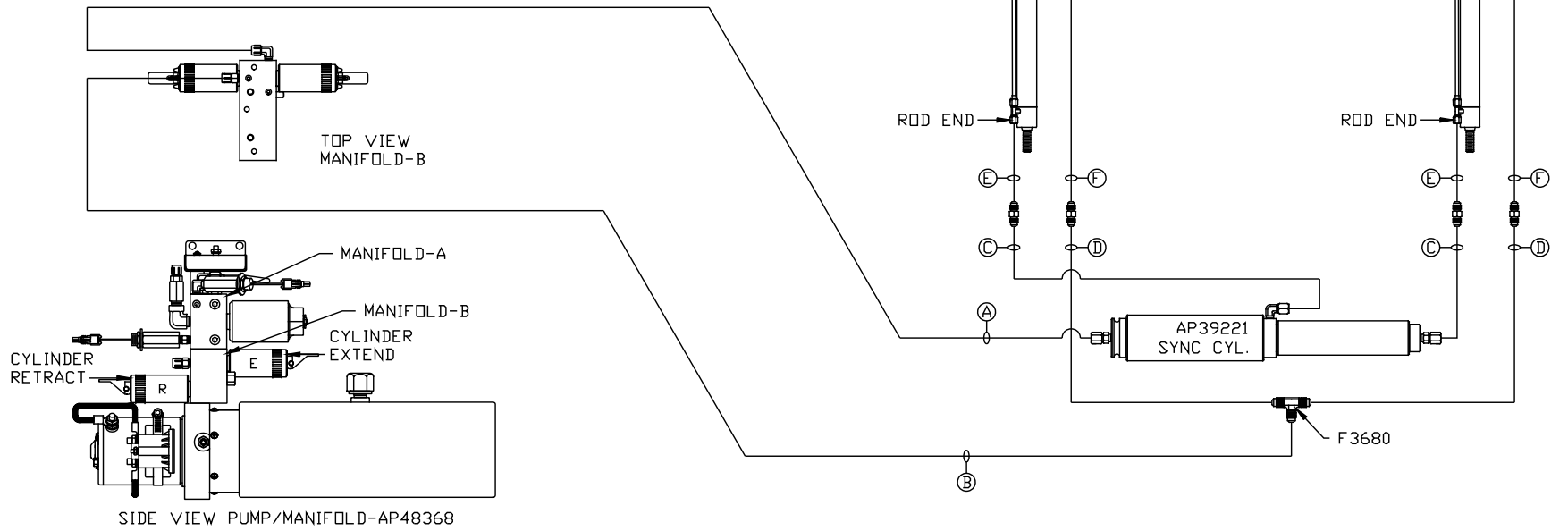
TIFFIN

DRAWING NUMBER
MP70572 A/B

ORIENTATION
 ← FRONT

NOTE: HOSES (E) AND (F) ARE INCLUDED WITH THE ROOM EXTENSION MECHANISM.

- (A) AP4313 HOSE ASSY .25" x 396"
ROD END - ALWAYS PRESSURIZED
- (B) AP4391 HOSE ASSY .25" x 372"
CAP END
- (C) AP24656 HOSE ASSY HWH02HP x 228"
ROD END - ALWAYS PRESSURIZED - MUST BE HIGH PRESSURE HOSES OF EQUAL LENGTH AND DIAMETER
- (D) AP4061 HOSE ASSY .25" x 216"
CAP END - MUST MAINTAIN EQUAL LENGTH AND DIAMETER
- (E) AP24637 HOSE ASSY HWH02HP x 66"
CAP END - MUST MAINTAIN EQUAL LENGTH AND DIAMETER
- (F) AP24631 HOSE ASSY HWH02HP x 42"
ROD END - ALWAYS PRESSURIZED - MUST BE HIGH PRESSURE HOSES OF EQUAL LENGTH AND DIAMETER



NOTE: INSTALLATION MUST CONFORM TO GOOD SHOP PRACTICES, SAE STANDARDS, RVIA STANDARDS, AND OTHER APPLICABLE STANDARDS.

MP70572 B/B
03AUG12