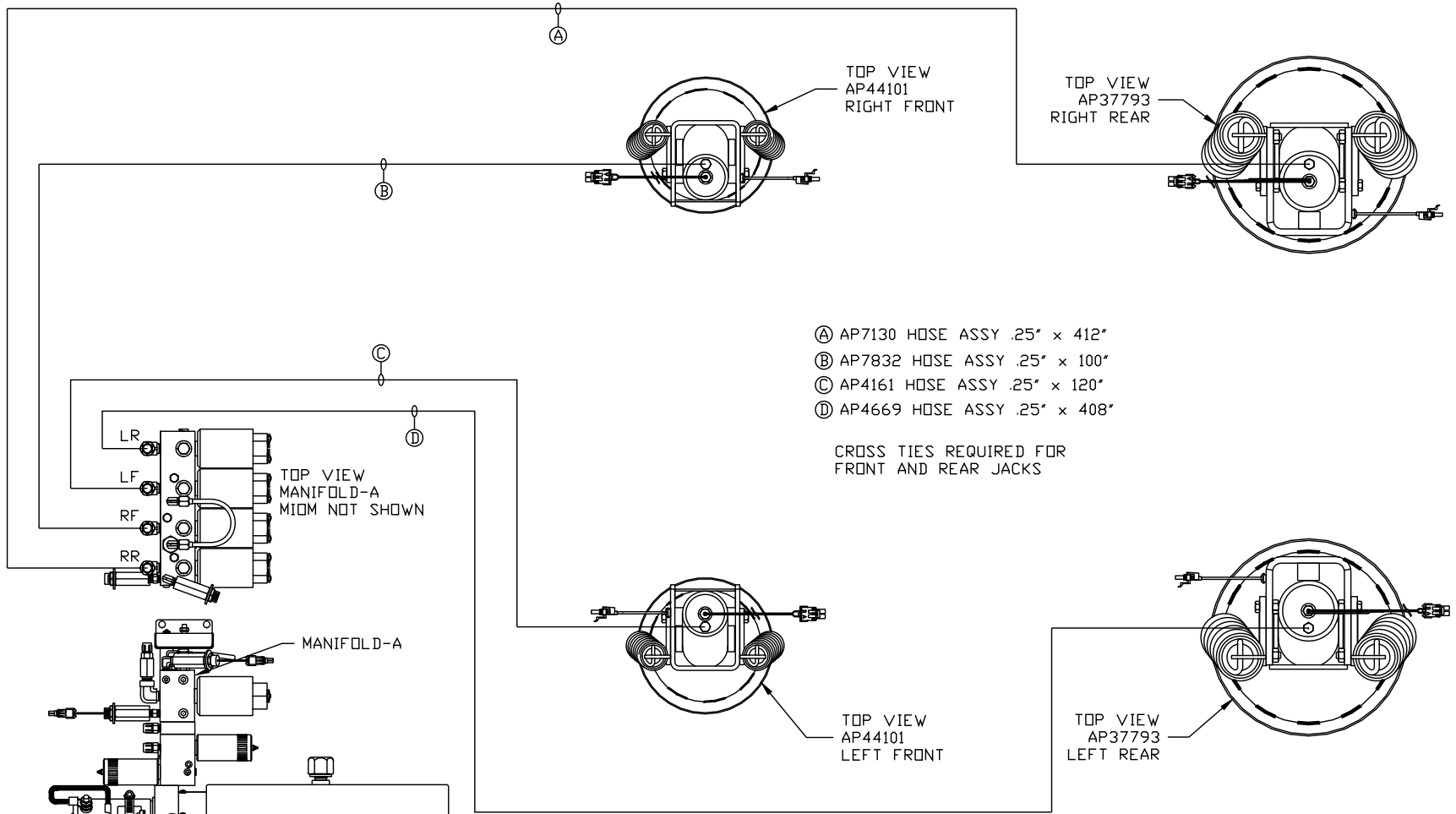
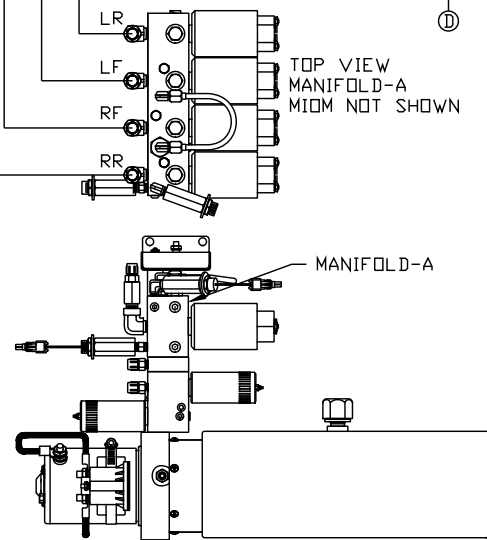


ORIENTATION  
← FRONT



- Ⓐ AP7130 HOSE ASSY .25" x 412"
- Ⓑ AP7832 HOSE ASSY .25" x 100"
- Ⓒ AP4161 HOSE ASSY .25" x 120"
- Ⓓ AP4669 HOSE ASSY .25" x 408"

CROSS TIES REQUIRED FOR FRONT AND REAR JACKS



LOCATION AND ORIENTATION OF PUMP/MANIFOLD ASSEMBLY WILL DIFFER DEPENDING UPON O.E.M.

NOTE: INSTALLATION MUST CONFORM TO GOOD SHOP PRACTICES, SAE STANDARDS, RVIA STANDARDS, AND OTHER APPLICABLE STANDARDS.

NO.	DATE	REVISION
1	07MAY15	UPDATED HOSES
SYNC KIT: AP48135 PUMP KIT: AP48122 JACK KIT: AP48120		
THE INFORMATION DISCLOSED ON THIS DRAWING IS CONFIDENTIAL AND MUST NOT BE DISCLOSED OR USED IN ANY MANNER WHICH WILL BE DETRIMENTAL TO THE HWH CORPORATION		

HWH I-80 EXIT 267 SOUTH  
RT 1 MOSCOW, IOWA 52760

SCALE 1:6 DATE 03AUG12 DRAWN BY .

HYD CONN DIAGRAM

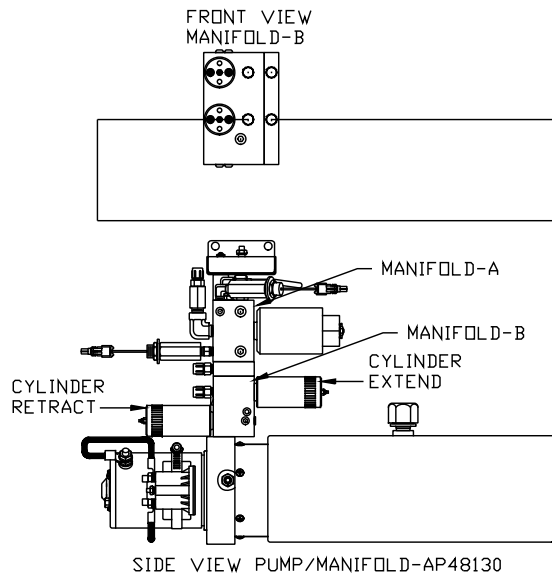
TIFFIN

DRAWING NUMBER  
MP70573 A/C

ORIENTATION  
 ← FRONT

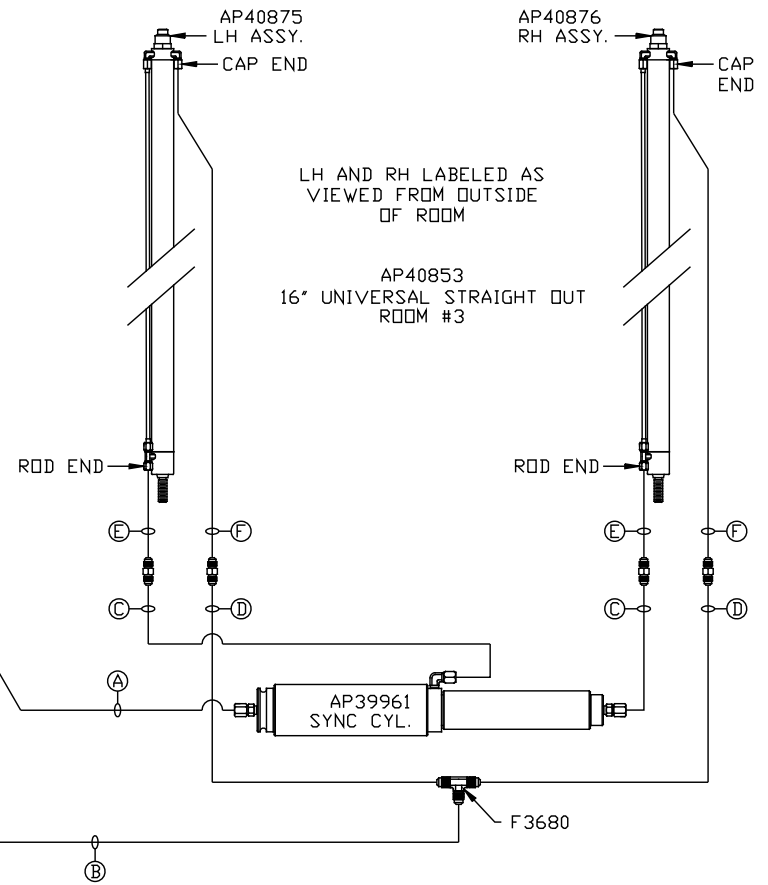
NOTE: ITEMS (E) AND (F) ARE INCLUDED WITH THE ROOM EXTENSION MECHANISM.

- (A) AP4059 HOSE ASSY .25" x 36"  
ROD END - ALWAYS PRESSURIZED
- (B) AP4073 HOSE ASSY .25" x 60"  
CAP END
- (C) AP50597 HOSE ASSY 03 x 174" MF  
WAS AP24640 HOSE ASSY HWH02HP x 108"  
ROD END - ALWAYS PRESSURIZED - MUST BE HIGH PRESSURE HOSES OF EQUAL LENGTH AND DIAMETER
- (D) AP7358 HOSE ASSY .25" x 175"  
WAS AP5352 HOSE ASSY .25" x 96"  
CAP END - MUST MAINTAIN EQUAL LENGTH AND DIAMETER
- (E) HYDRAULIC TUBE  
WAS AP24641 HOSE ASSY HWH02HP x 114"  
CAP END - MUST MAINTAIN EQUAL LENGTH AND DIAMETER
- (F) HYDRAULIC TUBE  
WAS AP24638 HOSE ASSY HWH02HP x 90"  
ROD END - ALWAYS PRESSURIZED - MUST BE HIGH PRESSURE HOSES OF EQUAL LENGTH AND DIAMETER



LOCATION AND ORIENTATION OF PUMP/MANIFOLD ASSEMBLY WILL DIFFER DEPENDING UPON O.E.M.

NOTE: INSTALLATION MUST CONFORM TO GOOD SHOP PRACTICES, SAE STANDARDS, RVIA STANDARDS, AND OTHER APPLICABLE STANDARDS.



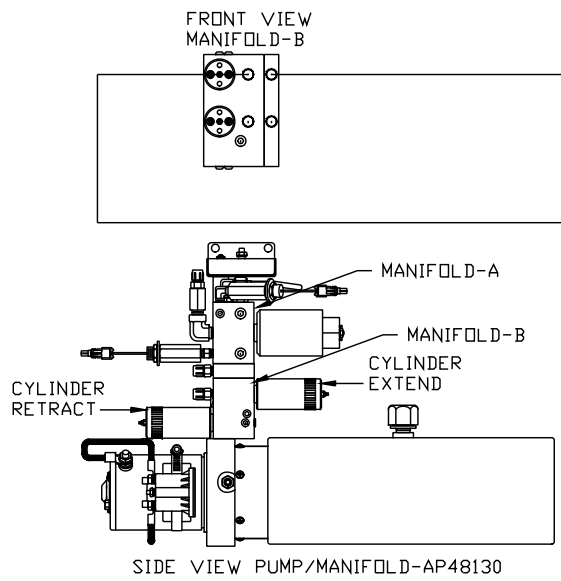
MP70573 B/C  
 07MAY15

ORIENTATION  
 ← FRONT

- Ⓐ AP10256 HOSE ASSY .25" x 366"  
 WAS AP4313 HOSE ASSY .25" x 396"  
 ROD END - ALWAYS PRESSURIZED
- Ⓑ AP50598 HOSE ASSY 03 x 372"  
 WAS AP4391 HOSE ASSY .25" x 372"  
 CAP END
- Ⓒ AP50598 HOSE ASSY 03 x 228" MF  
 WAS AP24656 HOSE ASSY HWH02HP x 228"  
 ROD END - ALWAYS PRESSURIZED - MUST  
 BE HIGH PRESSURE HOSES OF EQUAL  
 LENGTH AND DIAMETER
- Ⓓ AP50163 HOSE ASSY .25" x 222"  
 WAS AP4061 HOSE ASSY .25" x 216"  
 CAP END - MUST MAINTAIN EQUAL LENGTH  
 AND DIAMETER

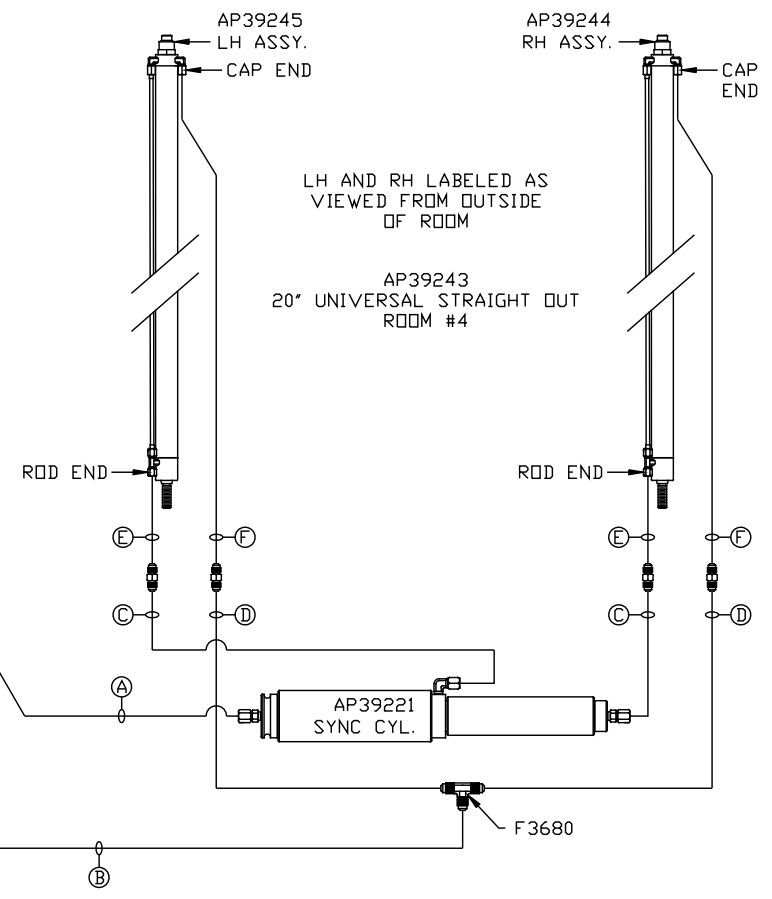
NOTE: ITEMS Ⓔ AND Ⓕ ARE INCLUDED  
 WITH THE ROOM EXTENSION MECHANISM.

- Ⓔ HYDRAULIC TUBE  
 WAS AP24637 HOSE ASSY HWH02HP x 66"  
 CAP END - MUST MAINTAIN EQUAL LENGTH  
 AND DIAMETER
- Ⓕ HYDRAULIC TUBE  
 WAS AP24631 HOSE ASSY HWH02HP x 42"  
 ROD END - ALWAYS PRESSURIZED - MUST  
 BE HIGH PRESSURE HOSES OF EQUAL  
 LENGTH AND DIAMETER



LOCATION AND ORIENTATION OF  
 PUMP/MANIFOLD ASSEMBLY WILL  
 DIFFER DEPENDING UPON O.E.M.

NOTE: INSTALLATION MUST CONFORM TO GOOD SHOP PRACTICES, SAE  
 STANDARDS, RVIA STANDARDS, AND OTHER APPLICABLE STANDARDS.



MP70573 C/C  
 07MAY15