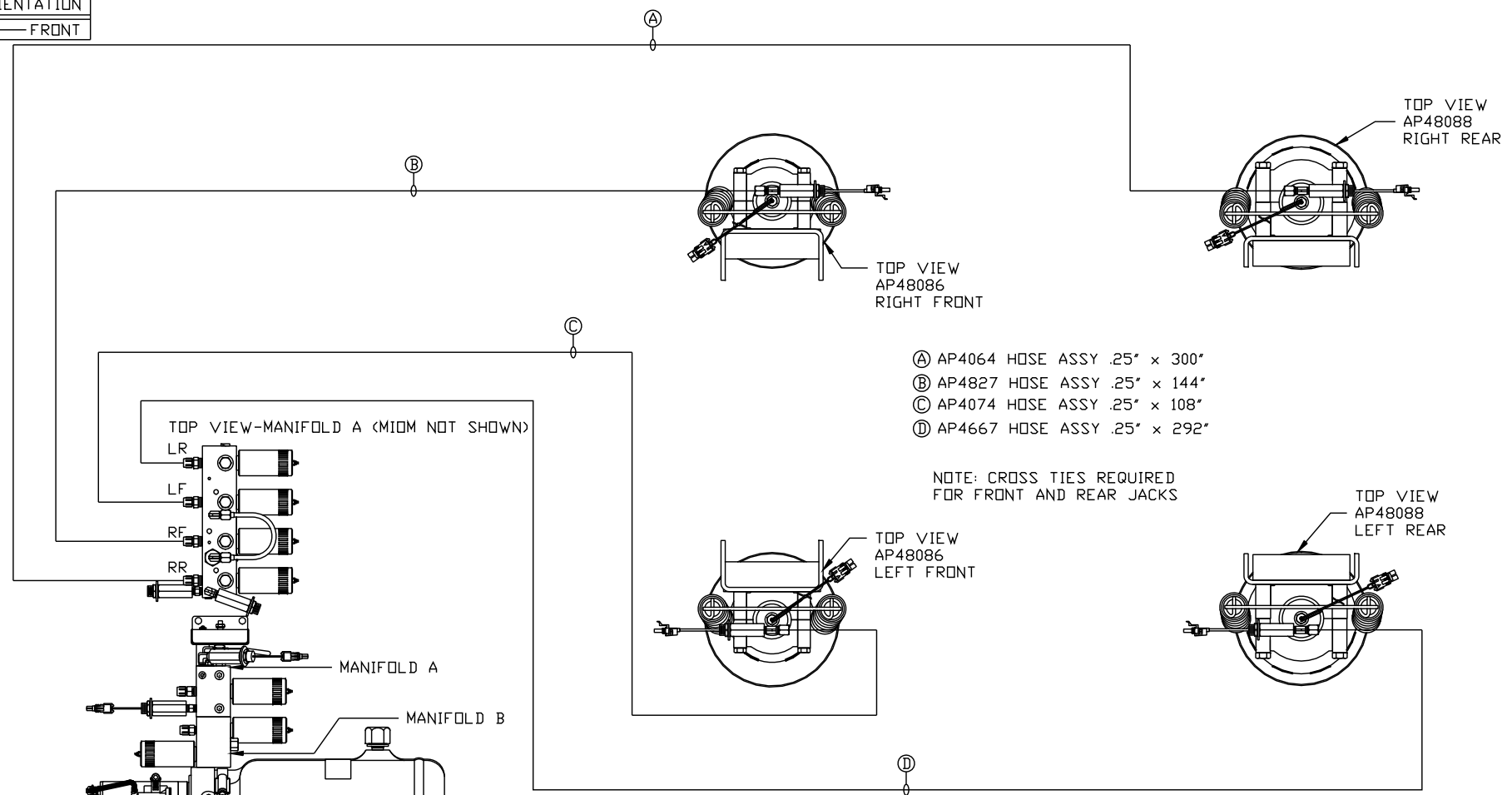
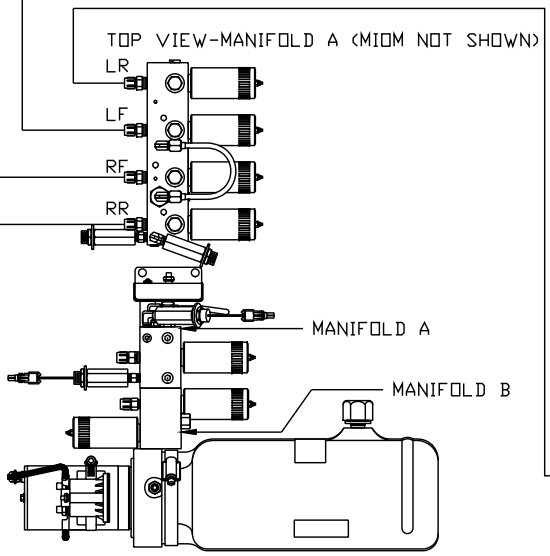


ORIENTATION
← FRONT



- Ⓐ AP4064 HOSE ASSY .25" x 300"
- Ⓑ AP4827 HOSE ASSY .25" x 144"
- Ⓒ AP4074 HOSE ASSY .25" x 108"
- Ⓓ AP4667 HOSE ASSY .25" x 292"

NOTE: CROSS TIES REQUIRED FOR FRONT AND REAR JACKS



SIDE VIEW PUMP/MANIFOLD-AP47686

LOCATION AND ORIENTATION OF PUMP/MANIFOLD ASSEMBLY WILL DIFFER DEPENDING UPON O.E.M.

NOTE: INSTALLATION MUST CONFORM TO GOOD SHOP PRACTICES, SAE STANDARDS, RVIA STANDARDS, AND OTHER APPLICABLE STANDARDS.

SYNC KIT: AP47687
PUMP KIT: AP47685
LEVELING SYSTEM: AP47683

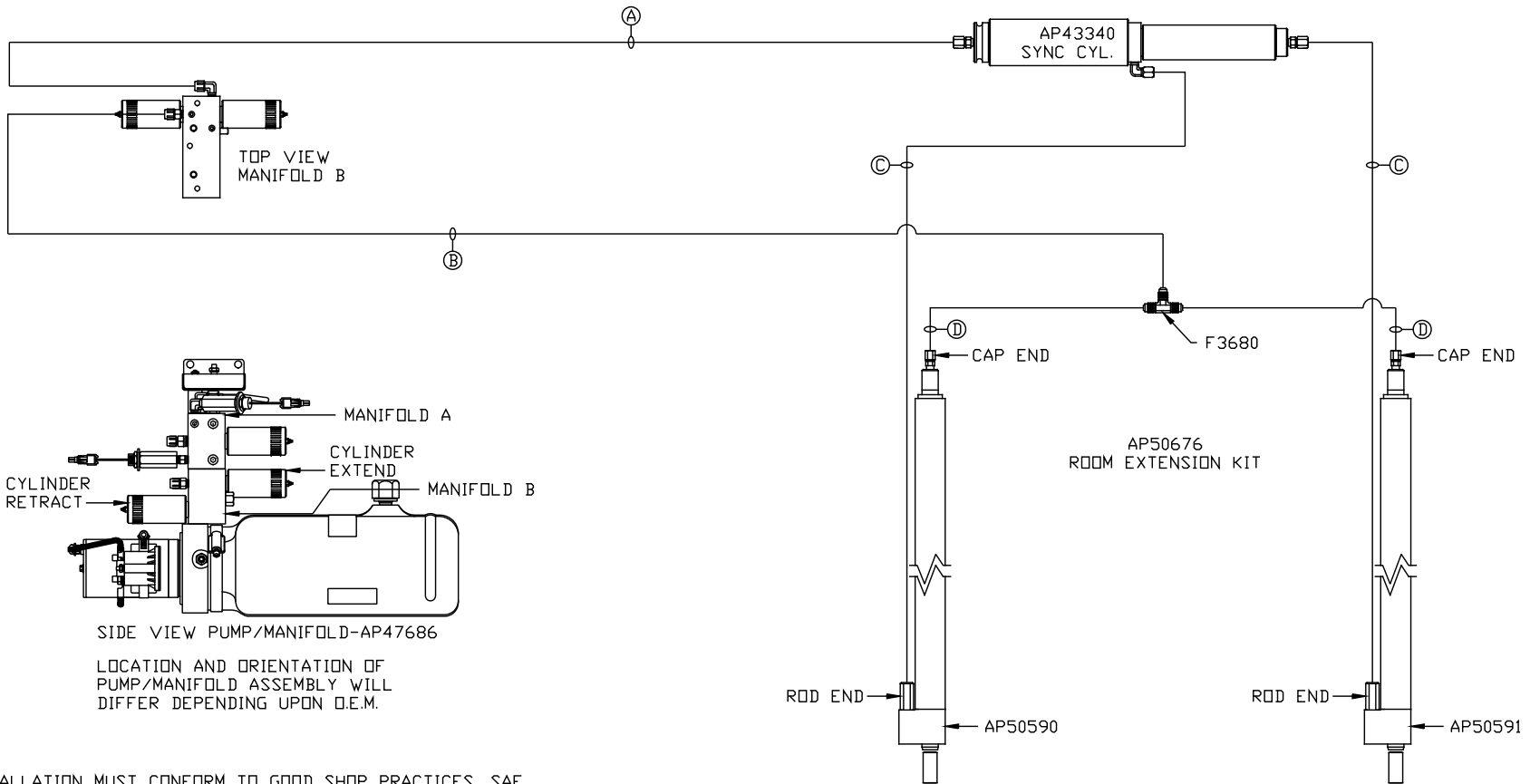
NO.	DATE	REVISION

HWH			I-80 EXIT 267 SOUTH RT 1 MOSCOW, IOWA 52760		
SCALE 1:6	DATE 09AUG12	DRAWN BY .			
HYD CONN DIAGRAM					
TIFFIN				DRAWING NUMBER MP70574 A/B	

ORIENTATION

← FRONT

- Ⓐ AP4065 HOSE ASSY .25" x 156"
ROD END - ALWAYS PRESSURIZED
- Ⓑ AP4159 HOSE ASSY .25" x 72"
CAP END
- Ⓒ AP24651 HOSE ASSY HWH02HP x 180"
ROD END - ALWAYS PRESSURIZED
HOSES MUST MAINTAIN EQUAL
LENGTH AND DIAMETER
- Ⓓ AP5352 HOSE ASSY .25" x 96"
CAP END - HOSES MUST MAINTAIN
EQUAL LENGTH AND DIAMETER



NOTE: INSTALLATION MUST CONFORM TO GOOD SHOP PRACTICES, SAE STANDARDS, RVIA STANDARDS, AND OTHER APPLICABLE STANDARDS.

MP70574 B/B
09AUG12