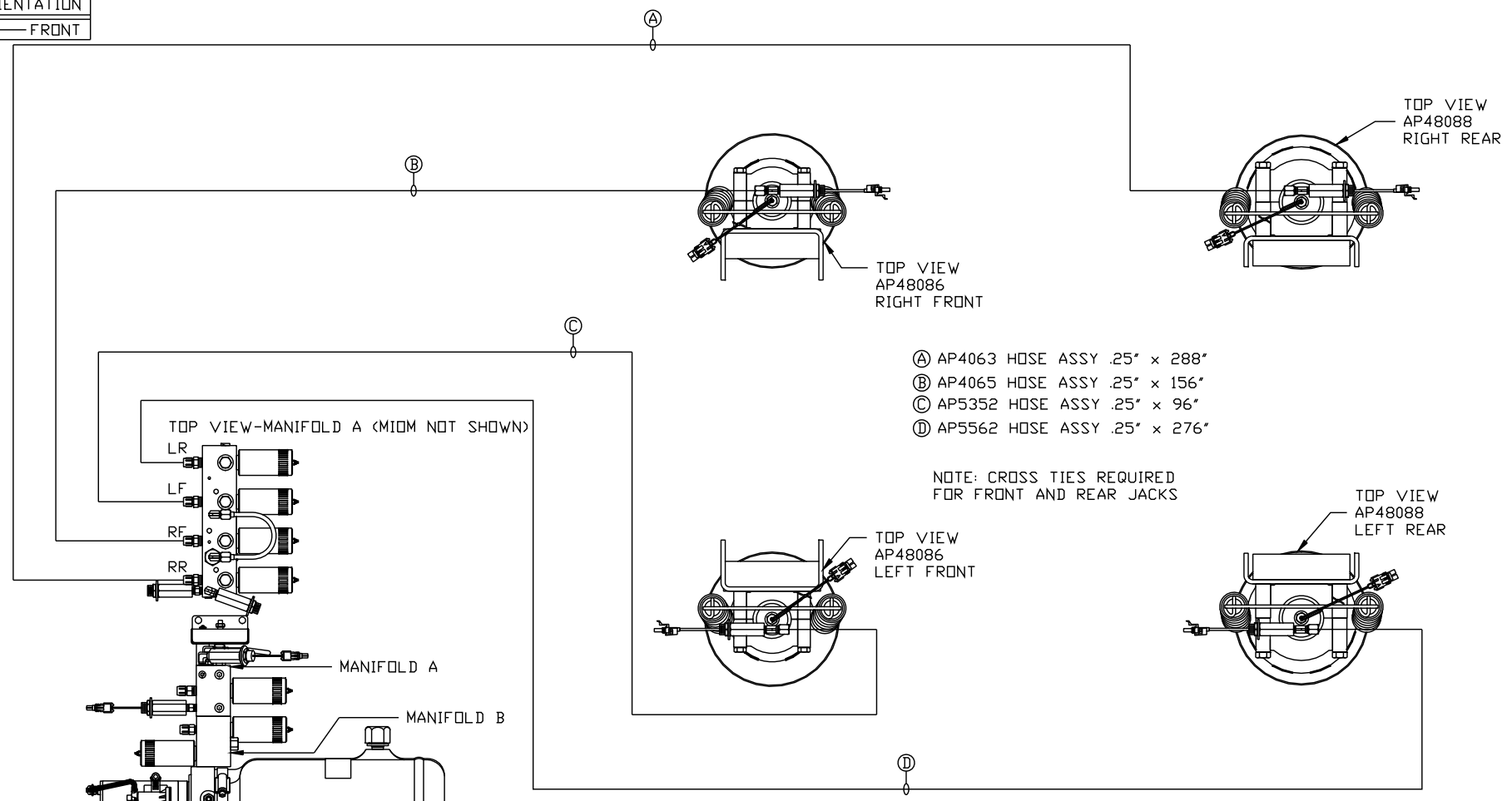
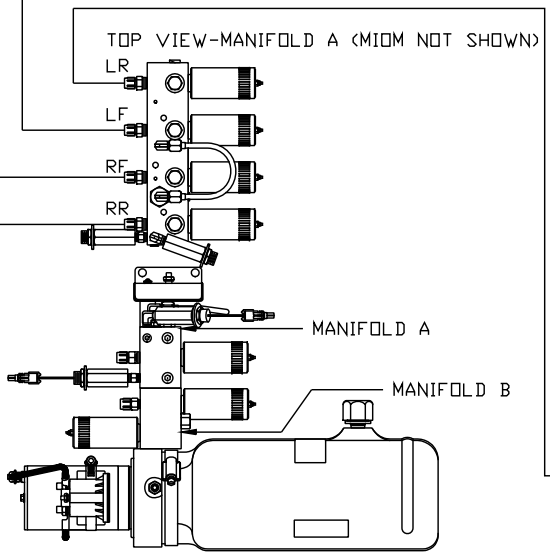


ORIENTATION
← FRONT



- Ⓐ AP4063 HOSE ASSY .25" x 288"
- Ⓑ AP4065 HOSE ASSY .25" x 156"
- Ⓒ AP5352 HOSE ASSY .25" x 96"
- Ⓓ AP5562 HOSE ASSY .25" x 276"

NOTE: CROSS TIES REQUIRED FOR FRONT AND REAR JACKS



SIDE VIEW PUMP/MANIFOLD-AP47686

LOCATION AND ORIENTATION OF PUMP/MANIFOLD ASSEMBLY WILL DIFFER DEPENDING UPON O.E.M.

NOTE: INSTALLATION MUST CONFORM TO GOOD SHOP PRACTICES, SAE STANDARDS, RVIA STANDARDS, AND OTHER APPLICABLE STANDARDS.

SYNC KIT: AP48632
PUMP KIT: AP47685
JACK KIT: AP48123

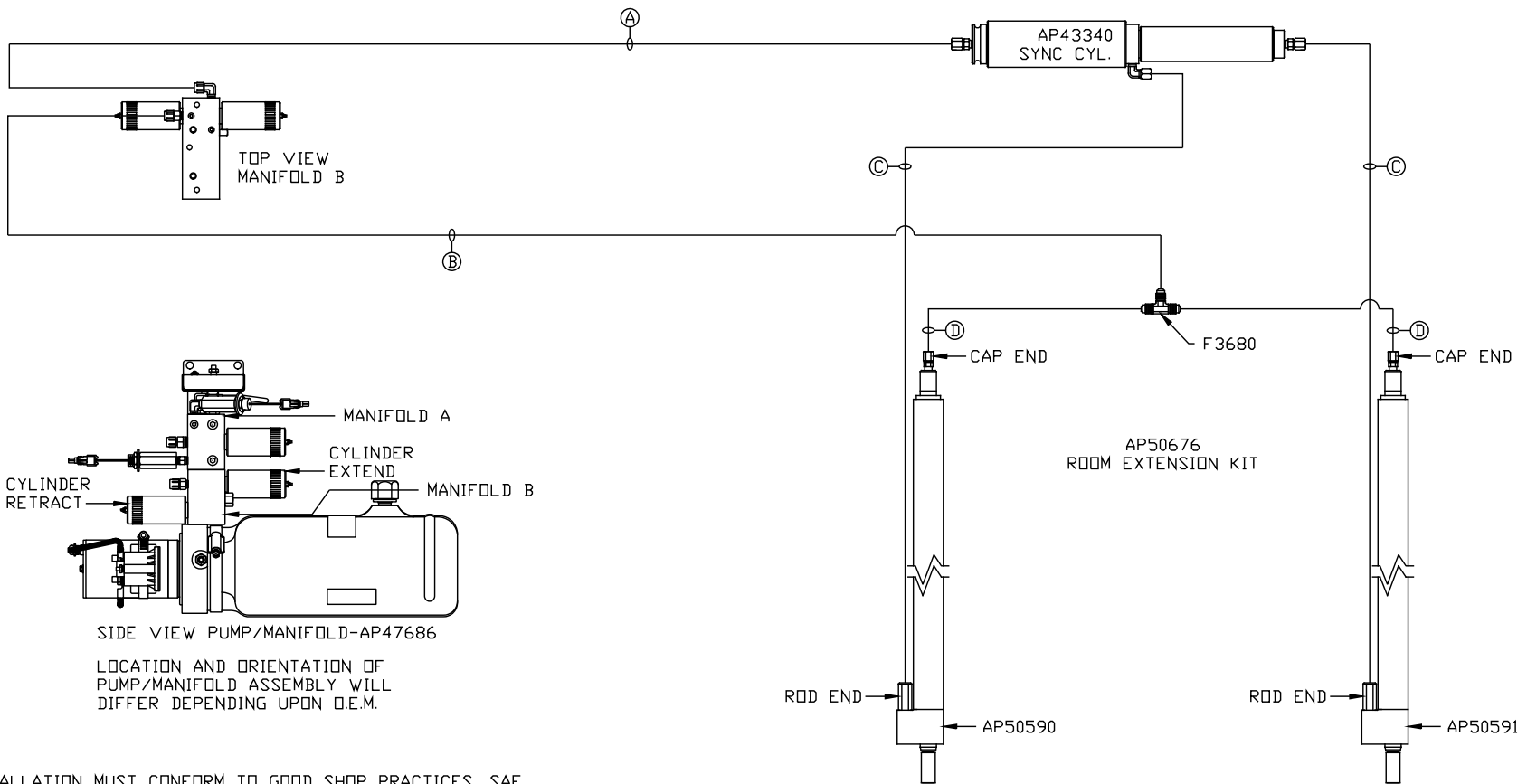
NO.	DATE	REVISION

HWH			I-80 EXIT 267 SOUTH RT 1 MOSCOW, IOWA 52760		
SCALE 1:6	DATE 09AUG12	DRAWN BY .			
HYD CONN DIAGRAM					
TIFFIN				DRAWING NUMBER MP70575 A/B	

ORIENTATION

← FRONT

- Ⓐ AP1412 HOSE ASSY .25" x 84"
ROD END - ALWAYS PRESSURIZED
- Ⓑ AP4073 HOSE ASSY .25" x 60"
CAP END
- Ⓒ AP24651 HOSE ASSY HWH02HP x 180"
ROD END - ALWAYS PRESSURIZED
HOSES MUST MAINTAIN EQUAL
LENGTH AND DIAMETER
- Ⓓ AP4827 HOSE ASSY .25" x 144"
CAP END - HOSES MUST MAINTAIN
EQUAL LENGTH AND DIAMETER



SIDE VIEW PUMP/MANIFOLD-AP47686

LOCATION AND ORIENTATION OF
PUMP/MANIFOLD ASSEMBLY WILL
DIFFER DEPENDING UPON O.E.M.

NOTE: INSTALLATION MUST CONFORM TO GOOD SHOP PRACTICES, SAE
STANDARDS, RVIA STANDARDS, AND OTHER APPLICABLE STANDARDS.

MP70575 B/B
09AUG12