

HOSES FOR ROOM #1

NOTE: HOSES (E) AND (F) ARE INCLUDED WITH THE ROOM EXTENSION MECHANISM

(A) .25" ID HOSE ASSY
ROD END - ALWAYS PRESSURIZED

(B) .25" ID HOSE ASSY
CAP END (ROOM)

(C) .125" ID DR 03 HOSE ASSY
ROD END - ALWAYS PRESSURIZED
HOSES MUST MAINTAIN EQUAL
LENGTH AND DIAMETER

(D) .25" ID HOSE ASSY
CAP END - HOSES MUST MAINTAIN
EQUAL LENGTH AND DIAMETER

(E) AP24632 HOSE ASSY HWH02HP x 48"
ROD END - ALWAYS PRESSURIZED -
HOSES MUST MAINTAIN EQUAL
LENGTH AND DIAMETER

(F) AP24818 HOSE ASSY HWH02HP x 86"
CAP END - MUST MAINTAIN EQUAL
LENGTH AND DIAMETER

(L) .25" ID HOSE ASSY
CAP END (LIFT)

(J) .25" ID HOSE ASSY
CAP END (ROOM)

(K) .25" ID HOSE ASSY
CAP END (ROOM)

(I) .25" ID HOSE ASSY ROD END (LIFT)
ALWAYS PRESSURIZED

(M) .25" ID HOSE ASSY
CAP END (LIFT)

(N) .25" ID HOSE ASSY
ROD END - ALWAYS PRESSURIZED (LIFT)

(O) .25" ID HOSE ASSY ROD END (LIFT)
ALWAYS PRESSURIZED

(P) .25" ID HOSE ASSY
CAP END LIFT

(Q) .25" ID HOSE ASSY
ROD END LIFT

(R) .25" ID HOSE ASSY
CAP END LIFT

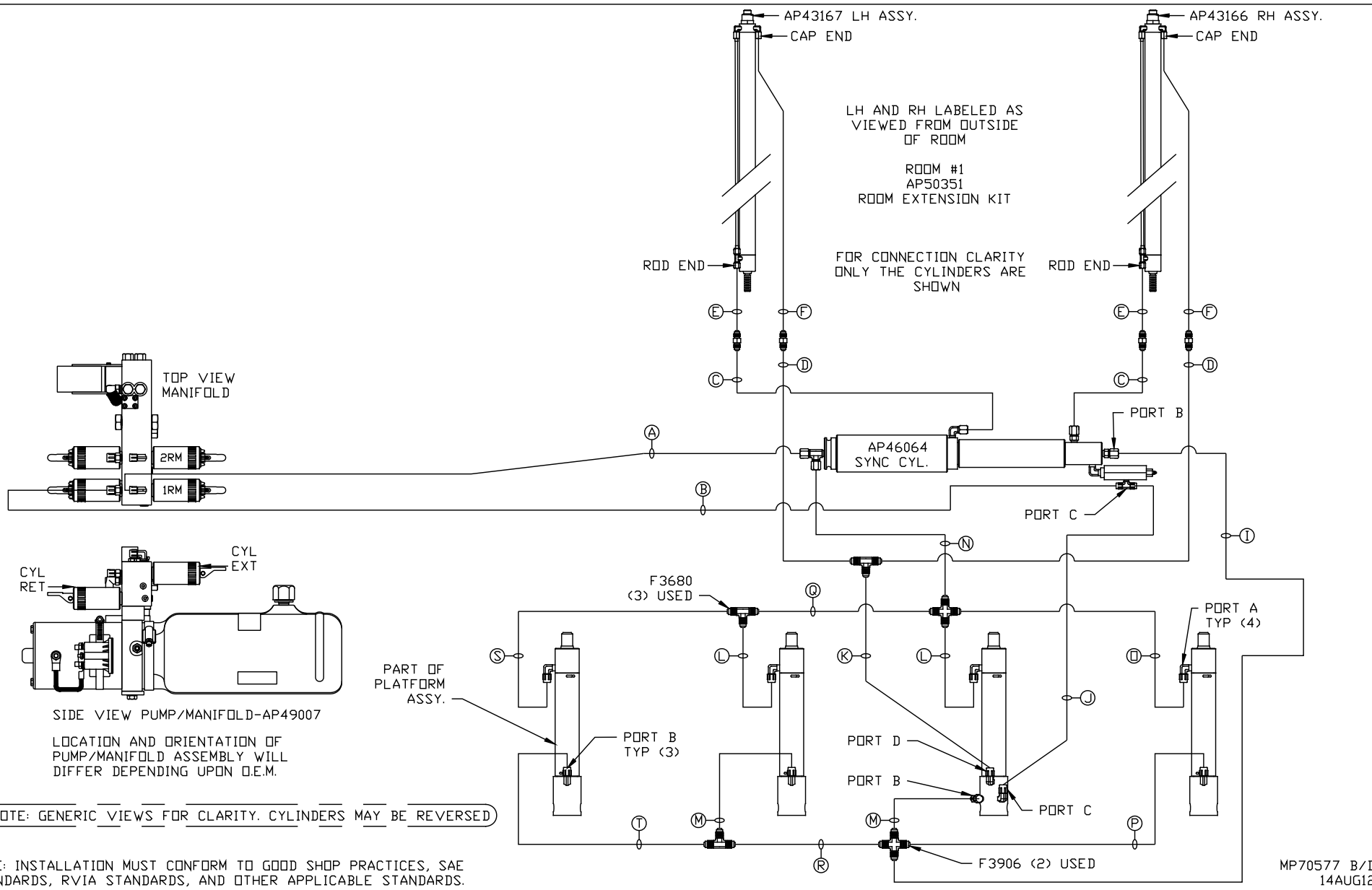
(S) .25" ID HOSE ASSY
ROD END LIFT

(T) .25" ID HOSE ASSY
CAP END LIFT

NOTE: INSTALLATION MUST CONFORM TO GOOD SHOP PRACTICES, SAE STANDARDS, RVIA STANDARDS, AND OTHER APPLICABLE STANDARDS.

CONTROL PACKAGE: AP50349

			HWH I-80 EXIT 267 SOUTH RT 1 MOSCOW, IOWA 52760		
SCALE 1:6		DATE 14AUG12	DRAWN BY .		
			HYD CONN DIAGRAM		
NO.	DATE	REVISION			
THE INFORMATION DISCLOSED ON THIS DRAWING IS CONFIDENTIAL AND MUST NOT BE DISCLOSED OR USED IN ANY MANNER WHICH WILL BE DETRIMENTAL TO THE HWH CORPORATION			PK VANS		DRAWING NUMBER MP70577 A/D



HOSES FOR ROOM #2

NOTE: HOSES (E) AND (F) ARE INCLUDED WITH THE ROOM EXTENSION MECHANISM

- | | | |
|---|--|---------------------------------------|
| (A) .25" ID HOSE ASSY
ROD END - ALWAYS PRESSURIZED | (I) .25" ID HOSE ASSY
CAP END (LIFT) | (Q) .25" ID HOSE ASSY
ROD END LIFT |
| (B) .25" ID HOSE ASSY
CAP END (ROOM) | (J) .25" ID HOSE ASSY
CAP END (ROOM) | (R) .25" ID HOSE ASSY
CAP END LIFT |
| (C) .125" ID OR 03 HOSE ASSY
ROD END - ALWAYS PRESSURIZED
HOSES MUST MAINTAIN EQUAL
LENGTH AND DIAMETER | (K) .25" ID HOSE ASSY
CAP END (ROOM) | (S) .25" ID HOSE ASSY
ROD END LIFT |
| (D) .25" ID HOSE ASSY
CAP END - HOSES MUST MAINTAIN
EQUAL LENGTH AND DIAMETER | (L) .25" ID HOSE ASSY ROD END (LIFT)
ALWAYS PRESSURIZED | (T) .25" ID HOSE ASSY
CAP END LIFT |
| (E) AP24632 HOSE ASSY HWH02HP x 48"
ROD END - ALWAYS PRESSURIZED -
HOSES MUST MAINTAIN EQUAL
LENGTH AND DIAMETER | (M) .25" ID HOSE ASSY
CAP END (LIFT) | |
| (F) AP24818 HOSE ASSY HWH02HP x 86"
CAP END - MUST MAINTAIN EQUAL
LENGTH AND DIAMETER | (N) .25" ID HOSE ASSY
ROD END - ALWAYS PRESSURIZED (LIFT) | |
| | (O) .25" ID HOSE ASSY ROD END (LIFT)
ALWAYS PRESSURIZED | |
| | (P) .25" ID HOSE ASSY
CAP END LIFT | |

