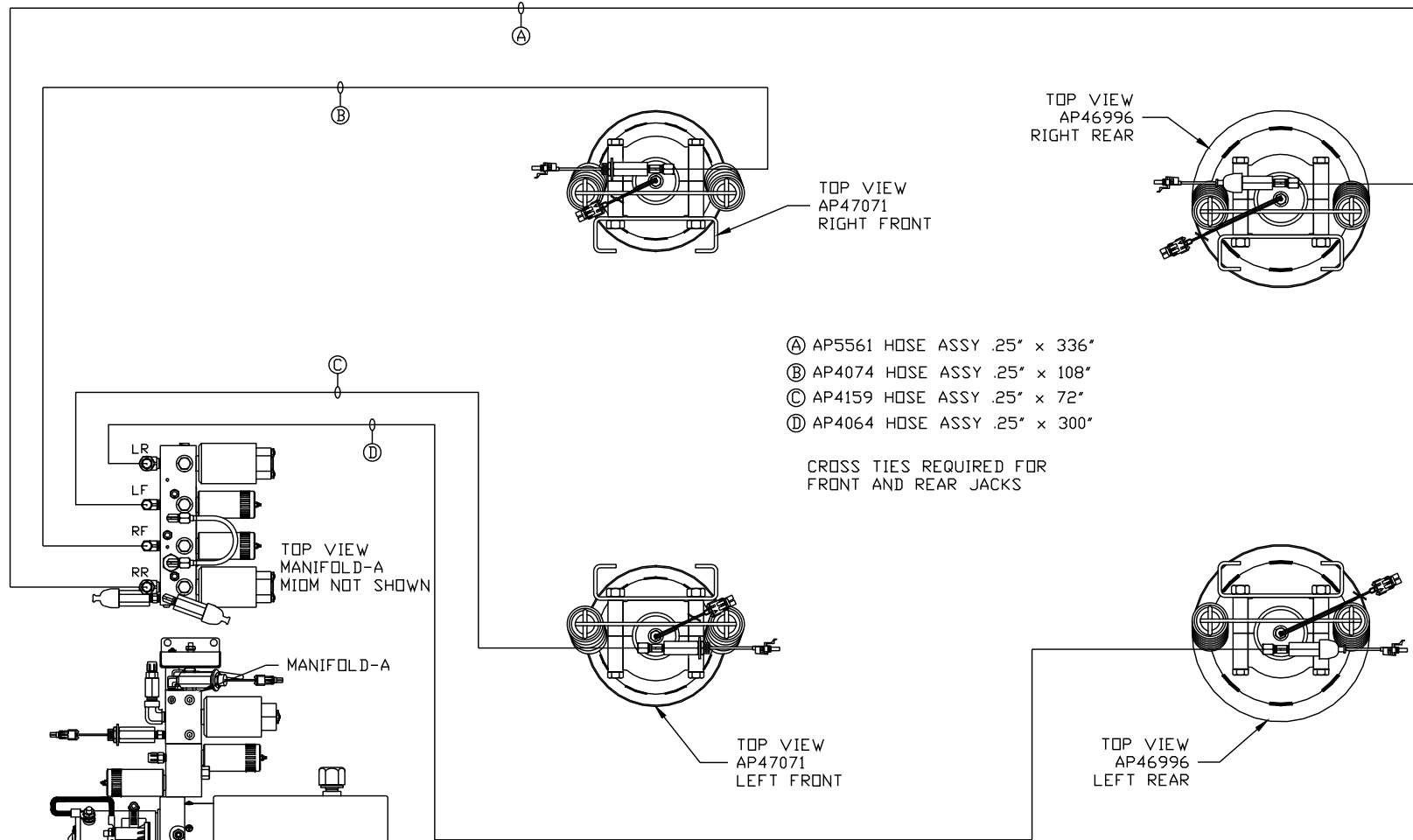


ORIENTATION

← FRONT



- Ⓐ AP5561 HOSE ASSY .25" x 336"
- Ⓑ AP4074 HOSE ASSY .25" x 108"
- Ⓒ AP4159 HOSE ASSY .25" x 72"
- Ⓓ AP4064 HOSE ASSY .25" x 300"

CROSS TIES REQUIRED FOR FRONT AND REAR JACKS

SIDE VIEW PUMP/MANIFOLD-AP47692

LOCATION AND ORIENTATION OF PUMP/MANIFOLD ASSEMBLY WILL DIFFER DEPENDING UPON O.E.M.

SYNC KIT: AP50602  
LEVELING SYSTEM: AP47690

1	07MAY15	SYNC KIT WAS AP50603
NO.	DATE	REVISION

THE INFORMATION DISCLOSED ON THIS DRAWING IS CONFIDENTIAL AND MUST NOT BE DISCLOSED OR USED IN ANY MANNER WHICH WILL BE DETRIMENTAL TO THE HWH CORPORATION

HWH I-80 EXIT 267 SOUTH  
RT 1 MOSCOW, IOWA 52760

SCALE 1:6 DATE 17SEP12 DRAWN BY .

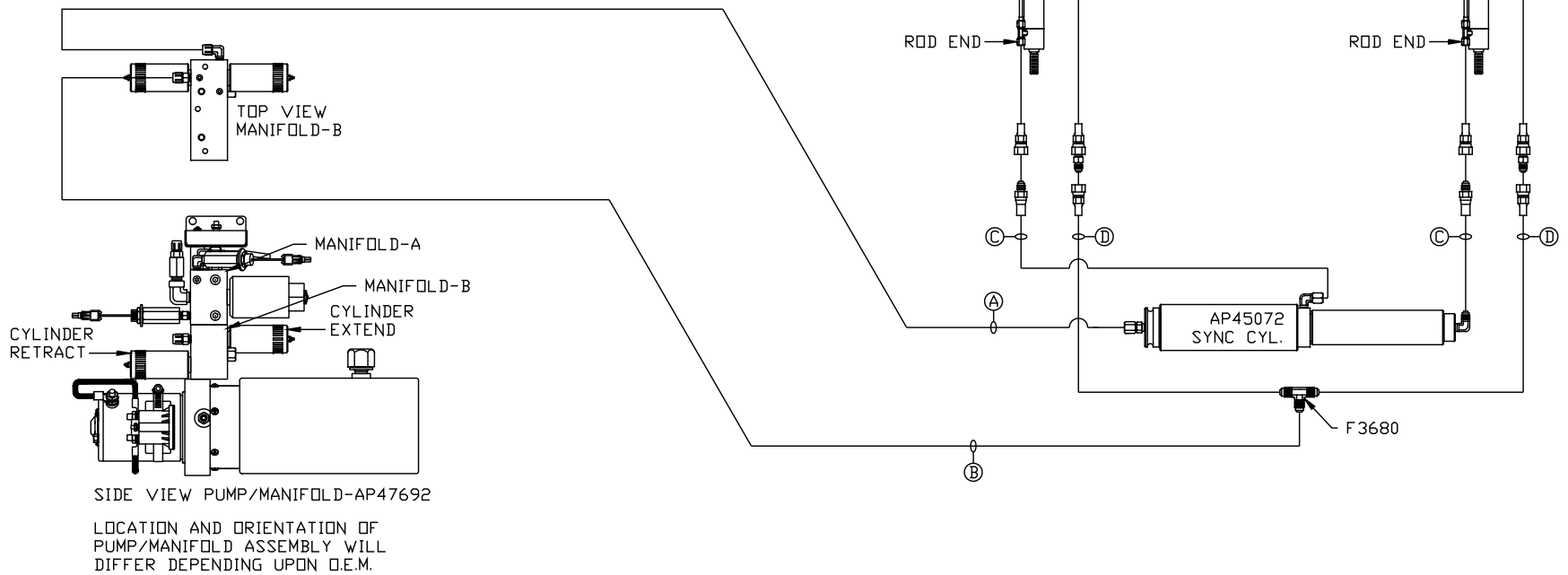
HYD CONN DIAGRAM

TIFFIN

DRAWING NUMBER  
MP70594 A/B

NOTE: INSTALLATION MUST CONFORM TO GOOD SHOP PRACTICES, SAE STANDARDS, RVIA STANDARDS, AND OTHER APPLICABLE STANDARDS.

- Ⓐ AP4159 HOSE ASSY .25" x 72"  
ROD END - ALWAYS PRESSURIZED
- Ⓑ AP5352 HOSE ASSY .25" x 96"  
CAP END
- Ⓒ AP50164 HOSE ASSY 03 x 222" MF  
ROD END - ALWAYS PRESSURIZED - MUST  
MAINTAIN EQUAL LENGTH AND DIAMETER
- Ⓓ AP50163 HOSE ASSY .25" x 222"  
CAP END - MUST MAINTAIN EQUAL LENGTH  
AND DIAMETER



NOTE: INSTALLATION MUST CONFORM TO GOOD SHOP PRACTICES, SAE STANDARDS, RVIA STANDARDS, AND OTHER APPLICABLE STANDARDS.

MP70594 B/B  
17SEP12