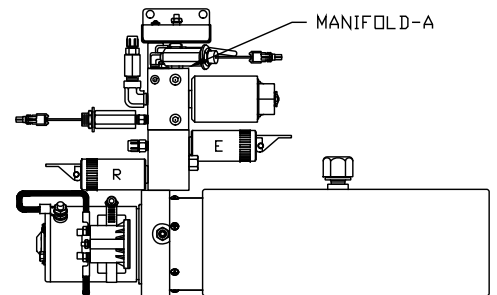
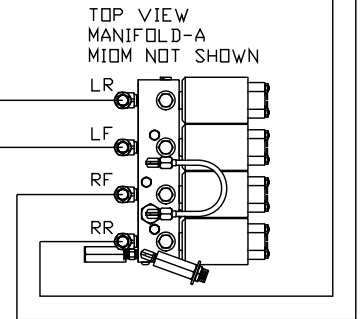
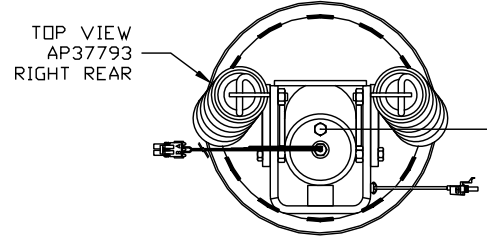
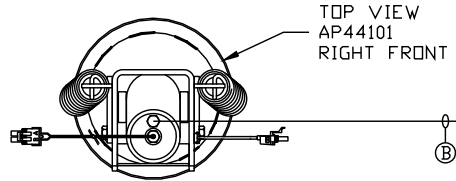


ORIENTATION  
← FRONT

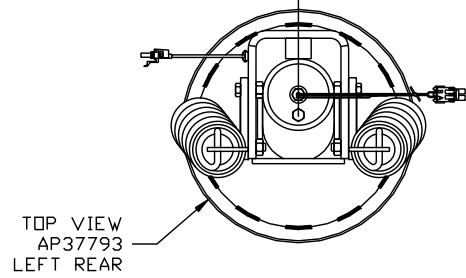
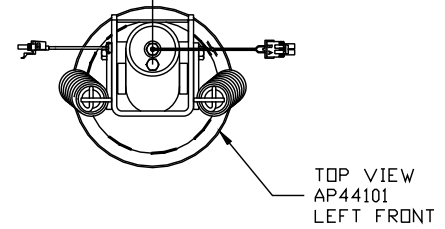


SIDE VIEW PUMP/MANIFOLD-AP48368

LOCATION AND ORIENTATION OF  
PUMP/MANIFOLD ASSEMBLY WILL  
DIFFER DEPENDING UPON O.E.M.

- Ⓐ AP7832 HOSE ASSY .25" x 100"
- Ⓑ AP4669 HOSE ASSY .25" x 408"
- Ⓒ AP7130 HOSE ASSY .25" x 412"
- Ⓓ AP4161 HOSE ASSY .25" x 120"

CROSS TIES REQUIRED FOR  
FRONT AND REAR JACKS

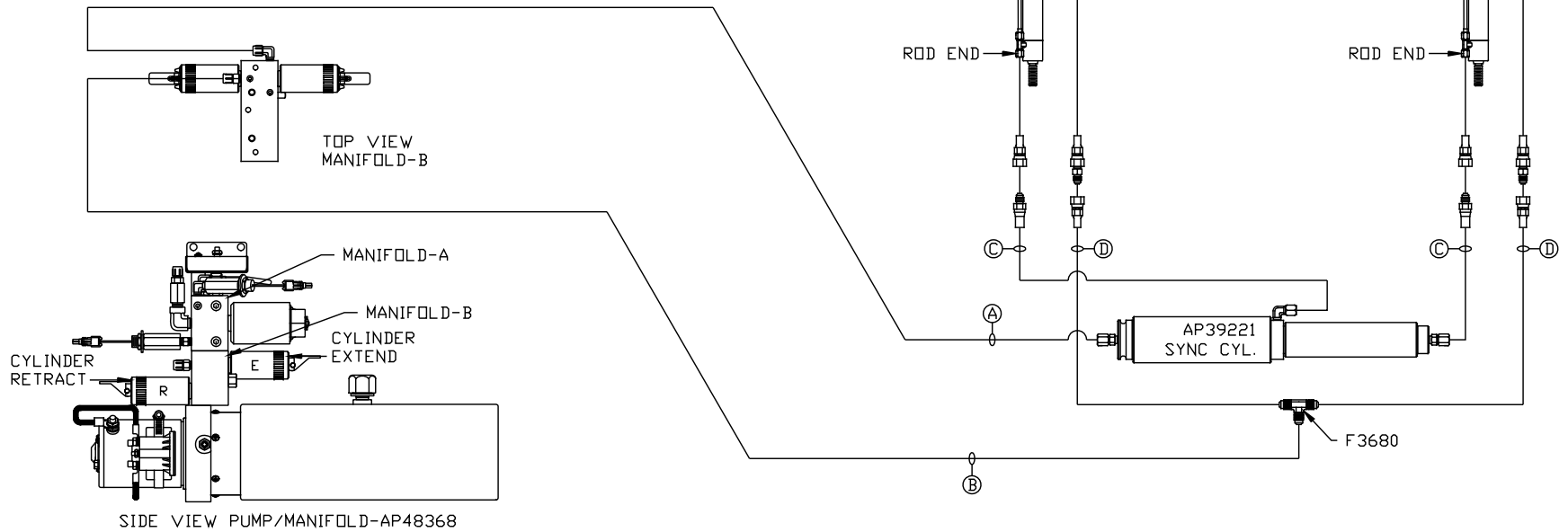


NOTE: INSTALLATION MUST CONFORM TO GOOD SHOP PRACTICES, SAE STANDARDS, RVIA STANDARDS, AND OTHER APPLICABLE STANDARDS.

SYNC KIT: AP48798	NO.	DATE	REVISION
PUMP KIT: AP48367	THE INFORMATION DISCLOSED ON THIS DRAWING IS CONFIDENTIAL AND MUST NOT BE DISCLOSED OR USED IN ANY MANNER WHICH WILL BE DETRIMENTAL TO THE HWH CORPORATION		
JACK KIT: AP48120			

HWH		I-80 EXIT 267 SOUTH	
		RT 1 MOSCOW, IOWA 52760	
SCALE 1:6	DATE 18SEP12	DRAWN BY .	
HYD CONN DIAGRAM			
TIFFIN			DRAWING NUMBER MP70600 A/B

- Ⓐ AP50598 HOSE ASSY .25" x 372"  
ROD END - ALWAYS PRESSURIZED
- Ⓑ AP10256 HOSE ASSY .25" x 366"  
CAP END
- Ⓒ AP50993 HOSE ASSY 03 x 228" MF  
ROD END - ALWAYS PRESSURIZED - MUST  
MAINTAIN EQUAL LENGTH AND DIAMETER
- Ⓓ AP50163 HOSE ASSY .25" x 222"  
CAP END - MUST MAINTAIN EQUAL LENGTH  
AND DIAMETER



NOTE: INSTALLATION MUST CONFORM TO GOOD SHOP PRACTICES, SAE STANDARDS, RVIA STANDARDS, AND OTHER APPLICABLE STANDARDS.

MP70600 B/B  
18SEP12