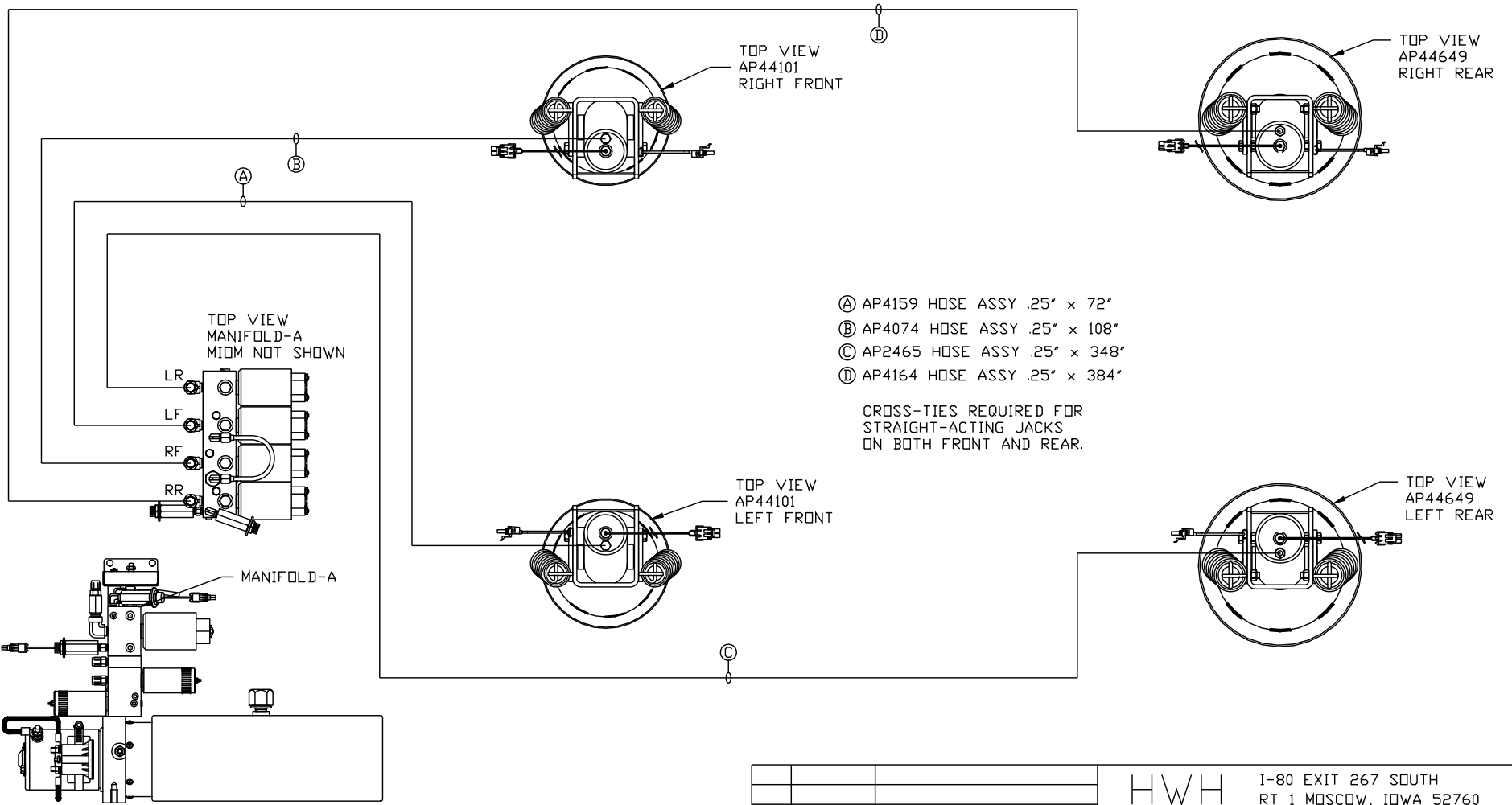


ORIENTATION
← FRONT



TOP VIEW
MANIFOLD-A
MIDM NOT SHOWN

LR
LF
RF
RR

MANIFOLD-A

SIDE VIEW PUMP/MANIFOLD-AP48130

LOCATION AND ORIENTATION OF
PUMP/MANIFOLD ASSEMBLY WILL
DIFFER DEPENDING UPON O.E.M.

TOP VIEW
AP44101
RIGHT FRONT

TOP VIEW
AP44649
RIGHT REAR

TOP VIEW
AP44101
LEFT FRONT

TOP VIEW
AP44649
LEFT REAR

- Ⓐ AP4159 HOSE ASSY .25" x 72"
- Ⓑ AP4074 HOSE ASSY .25" x 108"
- Ⓒ AP2465 HOSE ASSY .25" x 348"
- Ⓓ AP4164 HOSE ASSY .25" x 384"

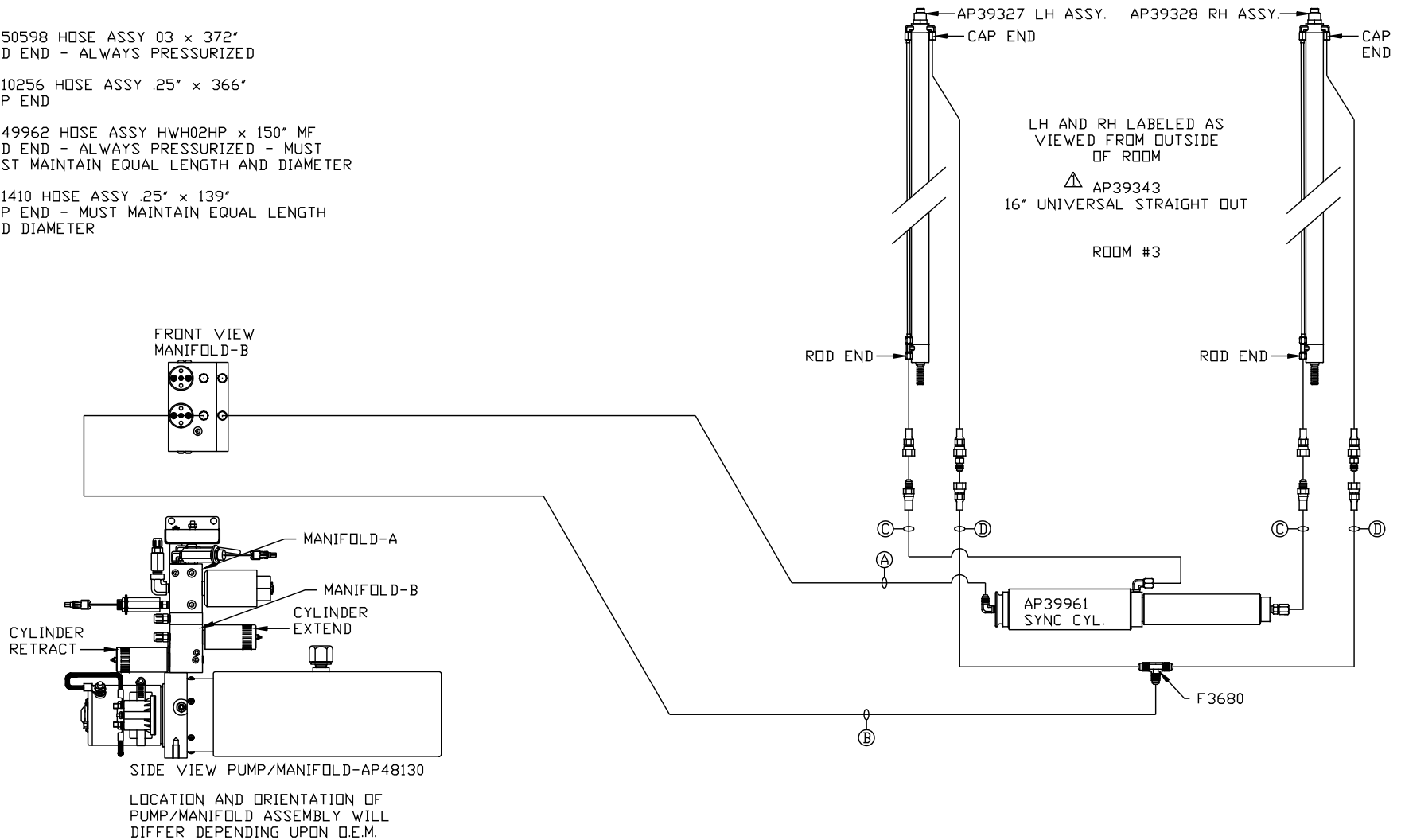
CROSS-TIES REQUIRED FOR
STRAIGHT-ACTING JACKS
ON BOTH FRONT AND REAR.

NOTE: INSTALLATION MUST CONFORM TO GOOD SHOP PRACTICES, SAE STANDARDS, RVIA STANDARDS, AND OTHER APPLICABLE STANDARDS.

NO.	DATE	REVISION
△	07MAY15	WAS AP39243
SYNC KIT:	AP48754	
PUMP KIT:	AP48122	
JACK KIT:	AP48362	

HWH		I-80 EXIT 267 SOUTH RT 1 MOSCOW, IOWA 52760	
SCALE 1:6	DATE 18SEP12	DRAWN BY .	
HYD CONN DIAGRAM			
TIFFIN		DRAWING NUMBER MP70603 A/C	

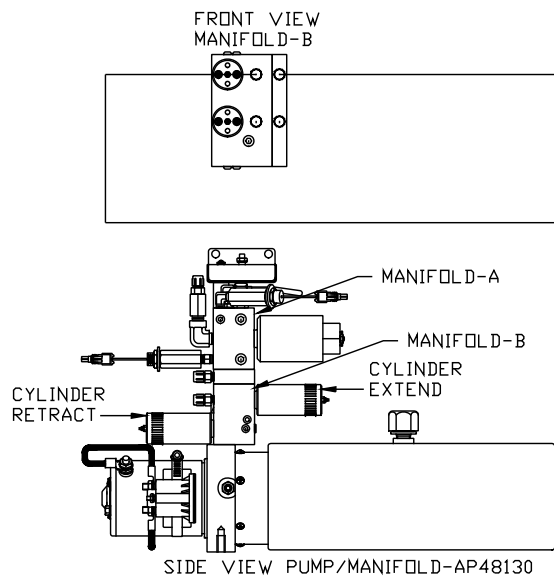
- Ⓐ AP50598 HOSE ASSY 03" x 372"
ROD END - ALWAYS PRESSURIZED
- Ⓑ AP10256 HOSE ASSY .25" x 366"
CAP END
- Ⓒ AP49962 HOSE ASSY HWH02HP x 150" MF
ROD END - ALWAYS PRESSURIZED - MUST
MUST MAINTAIN EQUAL LENGTH AND DIAMETER
- Ⓓ AP1410 HOSE ASSY .25" x 139"
CAP END - MUST MAINTAIN EQUAL LENGTH
AND DIAMETER



NOTE: INSTALLATION MUST CONFORM TO GOOD SHOP PRACTICES, SAE STANDARDS, RVIA STANDARDS, AND OTHER APPLICABLE STANDARDS.

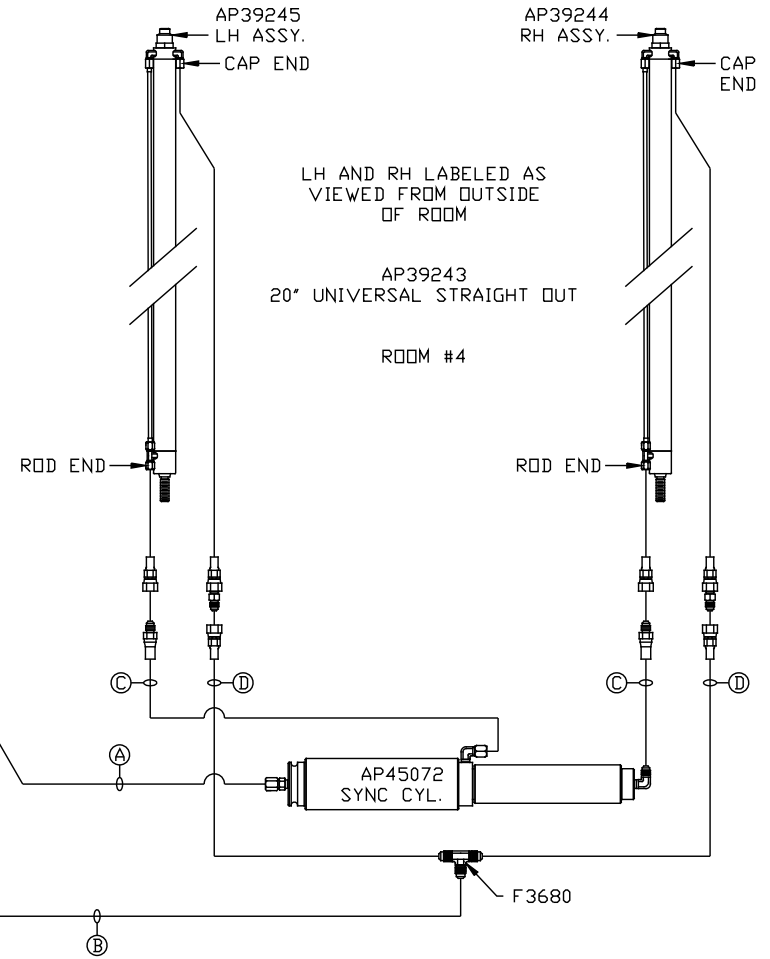
MP70603 B/C
07MAY15

- Ⓐ AP5352 HOSE ASSY .25" x 96"
ROD END - ALWAYS PRESSURIZED
- Ⓑ AP4159 HOSE ASSY .25" x 72"
CAP END
- Ⓒ AP50164 HOSE ASSY 03 x 222" MF
ROD END - ALWAYS PRESSURIZED - MUST
MUST MAINTAIN EQUAL LENGTH AND DIAMETER
- Ⓓ AP50163 HOSE ASSY .25" x 222"
CAP END - MUST MAINTAIN EQUAL LENGTH
AND DIAMETER



LOCATION AND ORIENTATION OF
PUMP/MANIFOLD ASSEMBLY WILL
DIFFER DEPENDING UPON O.E.M.

NOTE: INSTALLATION MUST CONFORM TO GOOD SHOP PRACTICES, SAE
STANDARDS, RVIA STANDARDS, AND OTHER APPLICABLE STANDARDS.



MP70603 C/C
18SEP12