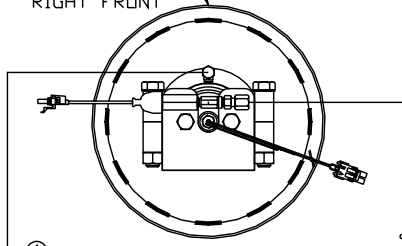


ORIENTATION  
← FRONT

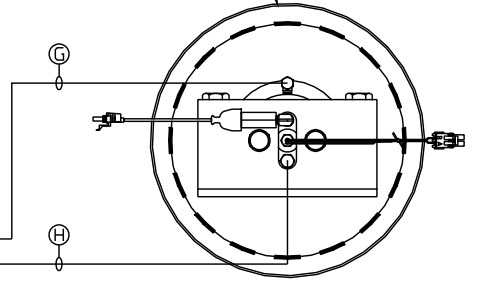
TOP VIEW  
AP45129  
RIGHT FRONT



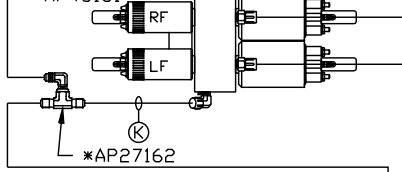
- (A) AP6601 HOSE ASSY .25" X 198" ROD END RIGHT FRONT JACK
- (B) AP19013 HOSE ASSY .313" X 180" CAP END RIGHT FRONT JACK
- (C) AP4062 HOSE ASSY .25" X 132" ROD END LEFT FRONT JACK
- (D) AP42054 HOSE ASSY .313" X 108" CAP END LEFT FRONT JACK
- (E) AP4669 HOSE ASSY .25" X 408" ROD END LEFT REAR JACK

- (F) AP42174 HOSE ASSY .313" X 384" CAP END LEFT REAR JACK
- (G) AP6217 HOSE ASSY .25" X 456" ROD END RIGHT REAR JACK
- (H) AP7315 HOSE ASSY .313" X 432" CAP END RIGHT REAR JACK
- (I) \*AP4060 HOSE ASSY .25" X 24" PRESSURE
- (J) \*20" M401501 .5" DD TUBING RETURN
- (K) \*AP5212 HOSE ASSY .25" X 15"

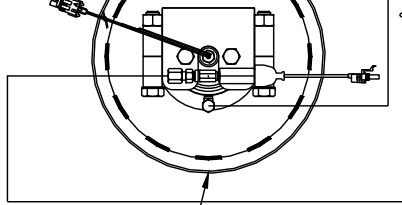
TOP VIEW  
AP43838  
RIGHT REAR



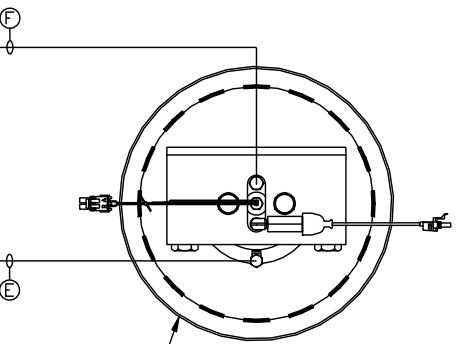
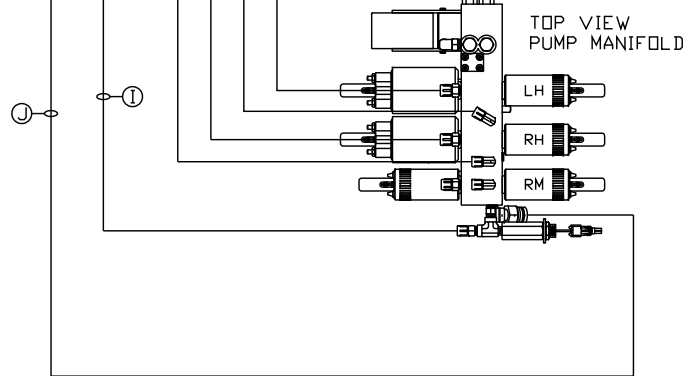
TOP VIEW  
MANIFOLD  
\*AP48181



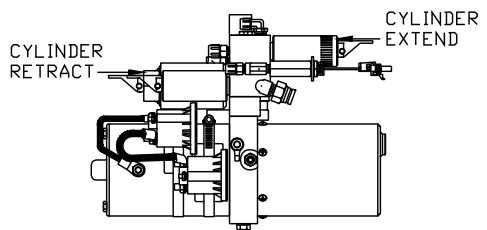
\*AP27162



TOP VIEW  
AP45129  
LEFT FRONT



TOP VIEW  
AP43838  
LEFT REAR



SIDE VIEW OF PRIMARY PUMP/MANIFOLD-\*AP46592  
\*: PART OF AP51415 POWER/CONTROL

NOTE: INSTALLATION MUST CONFORM TO GOOD SHOP PRACTICES, SAE STANDARDS, RVIA STANDARDS, AND OTHER APPLICABLE STANDARDS.

LEVELING SYSTEM: AP49710

Δ	05MAR13	WAS AP38944 & AP38945
1	11FEB13	UPDATED HOSES
NO.	DATE	REVISION

THE INFORMATION DISCLOSED ON THIS DRAWING IS CONFIDENTIAL AND MUST NOT BE DISCLOSED OR USED IN ANY MANNER WHICH WILL BE DETRIMENTAL TO THE HWH CORPORATION

HWH			I-80 EXIT 267 SOUTH RT 1 MOSCOW, IOWA 52760		
SCALE 1:6	DATE 23JAN13	DRAWN BY .			
HYD CONN DIAGRAM					
PIERCE MFG.				DRAWING NUMBER MP70611 A/B	

