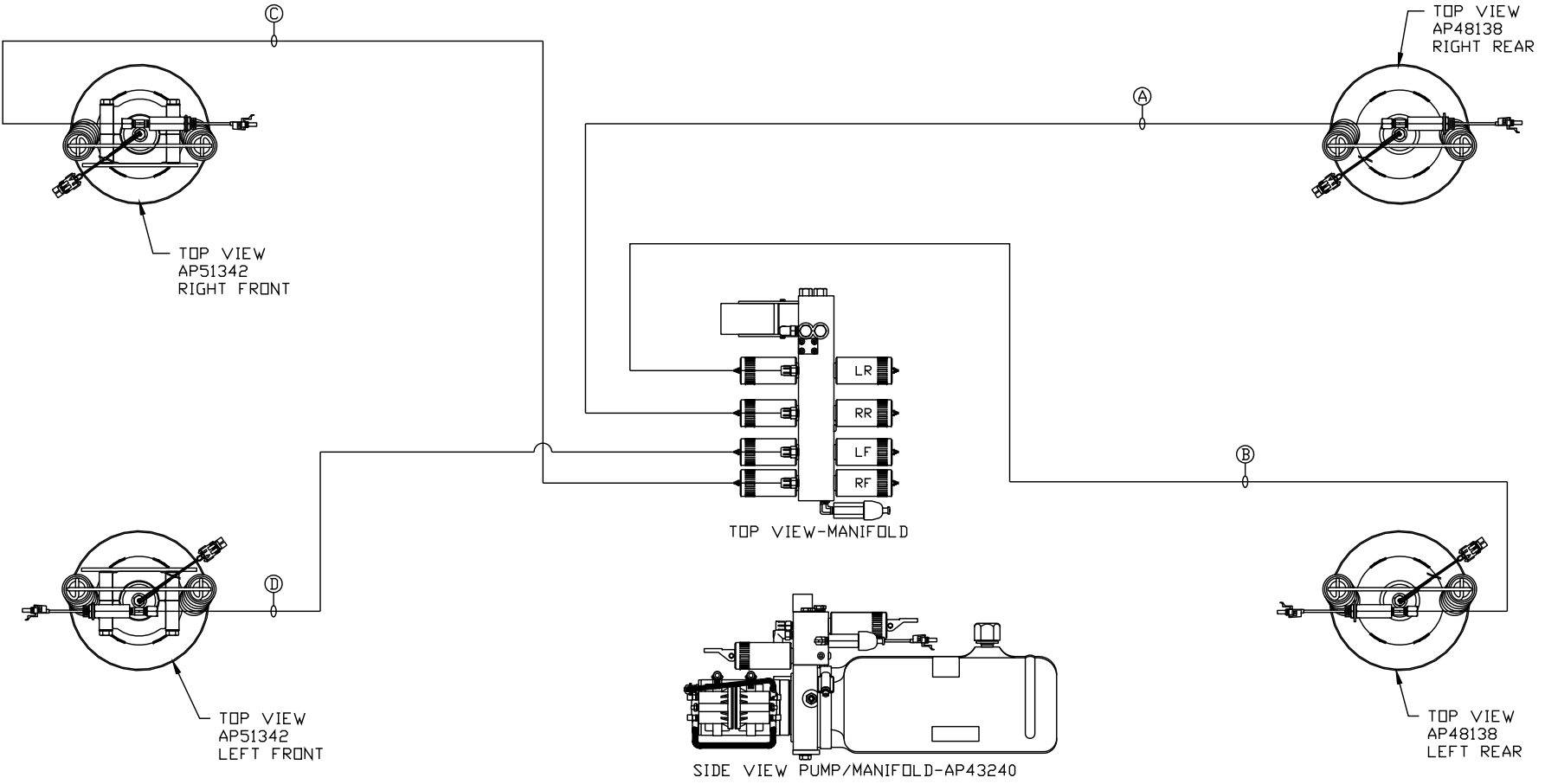


ORIENTATION
 ← FRONT



- Ⓐ AP4163 HOSE ASSY .25" x 360"
- Ⓑ AP2464 HOSE ASSY .25" x 324"
- Ⓒ AP4827 HOSE ASSY .25" x 144"
- Ⓓ AP1412 HOSE ASSY .25" x 84"

NOTE: CROSS TIES REQUIRED FOR FRONT AND REAR JACKS

NOTE: INSTALLATION MUST CONFORM TO GOOD SHOP PRACTICES, SAE STANDARDS, RVIA STANDARDS, AND OTHER APPLICABLE STANDARDS.

LEVELING SYSTEM: AP51319

NO.	DATE	REVISION
THE INFORMATION DISCLOSED ON THIS DRAWING IS CONFIDENTIAL AND MUST NOT BE DISCLOSED OR USED IN ANY MANNER WHICH WILL BE DETRIMENTAL TO THE HWH CORPORATION		

HWH			I-80 EXIT 267 SOUTH RT 1 MOSCOW, IOWA 52760		
SCALE 1:6	DATE 11FEB13	DRAWN BY .			
HYD CONN DIAGRAM					
AFTERMARKET				DRAWING NUMBER MP70615	