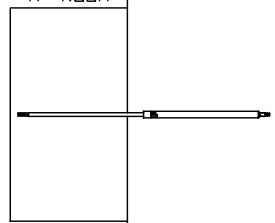


ORIENTATION  
 ← FRONT

AP37882  
 CYLINDER  
 GEN SLIDE  
 FUNCTION 3  
 "A" ROOM



AP38417  
 PUMP/MANIFOLD



AP39725  
 UNIVERSAL STRAIGHT OUT  
 FUNCTION 1  
 "B" ROOM

AP39732  
 UNIVERSAL STRAIGHT OUT  
 FUNCTION 2  
 "B" ROOM

NOTE: INSTALLATION MUST CONFORM TO GOOD SHOP PRACTICES, SAE STANDARDS, RVIA STANDARDS, AND OTHER APPLICABLE STANDARDS.

LEVELING SYSTEM: AP51344

NO.	DATE	REVISION

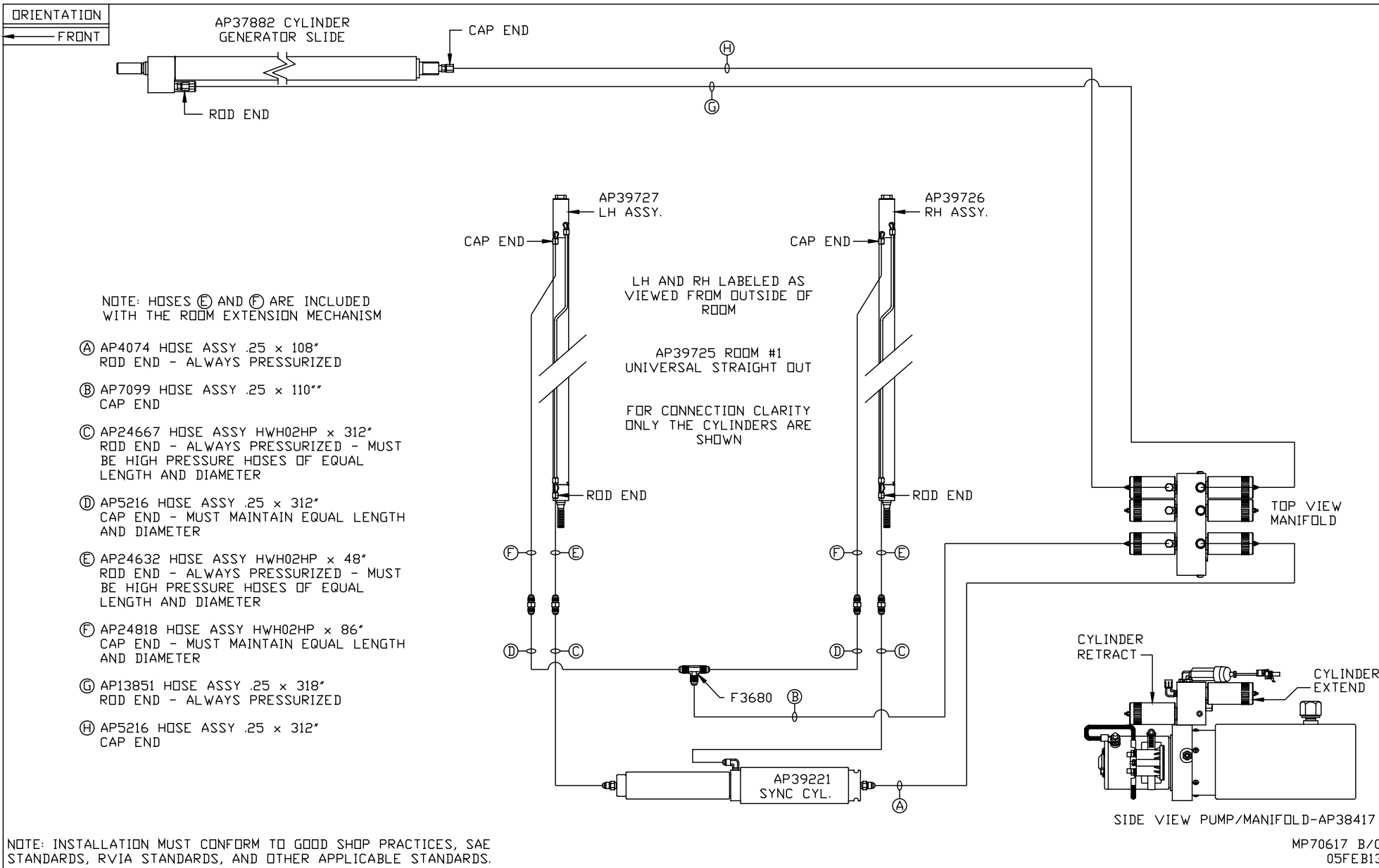
**HWH** I-80 EXIT 267 SOUTH  
 RT 1 MOSCOW, IOWA 52760  
 SCALE 1:6 DATE 05FEB13 DRAWN BY .

HYD CONN DIAGRAM

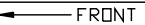
THE INFORMATION DISCLOSED ON THIS DRAWING IS CONFIDENTIAL AND MUST NOT BE DISCLOSED OR USED IN ANY MANNER WHICH WILL BE DETRIMENTAL TO THE HWH CORPORATION

FORETRAVEL

DRAWING NUMBER  
 MP70617 A/C

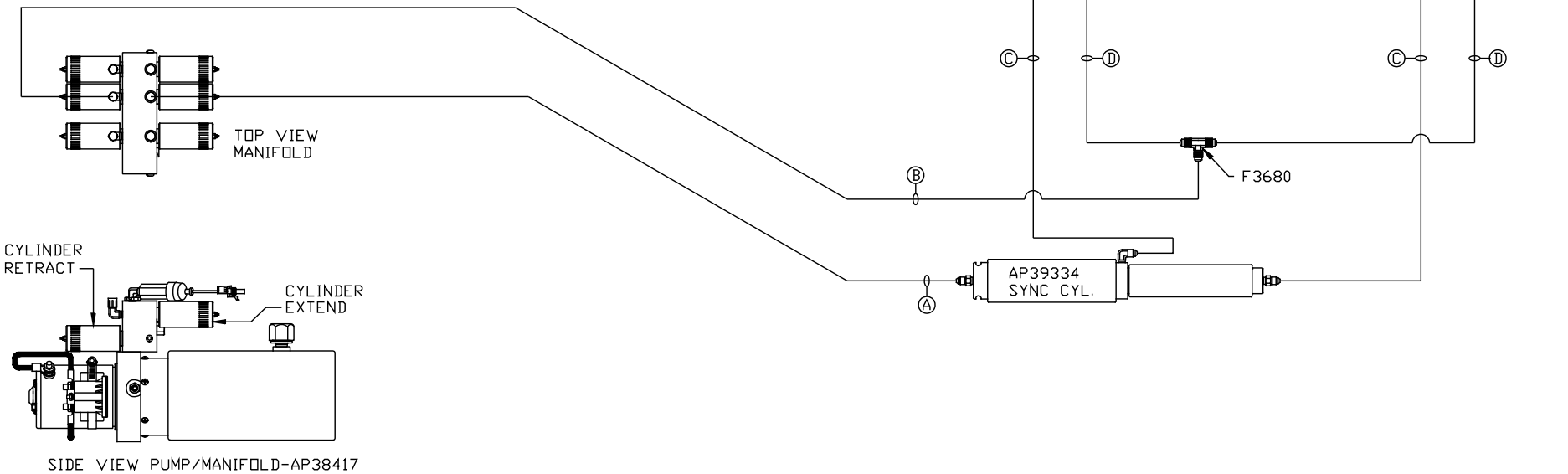


ORIENTATION



NOTE: HOSES ③ AND ④ ARE INCLUDED WITH THE ROOM EXTENSION MECHANISM

- ① AP2464 HOSE ASSY .25" X 324"  
ROD END - ALWAYS PRESSURIZED
- ② AP24667 HOSE ASSY HWH02HP X 312"  
CAP END
- ③ AP25086 HOSE ASSY HWH02HP X 78"  
ROD END - ALWAYS PRESSURIZED - MUST BE HIGH PRESSURE HOSES OF EQUAL LENGTH AND DIAMETER
- ④ AP24819 HOSE ASSY HWH02HP X 100"  
CAP END - MUST MAINTAIN EQUAL LENGTH AND DIAMETER



NOTE: INSTALLATION MUST CONFORM TO GOOD SHOP PRACTICES, SAE STANDARDS, RVIA STANDARDS, AND OTHER APPLICABLE STANDARDS.

MP70617 C/C  
05FEB13