



Ⓐ AP3314 HOSE ASSY .25" x 48"  
ROD END - ALWAYS PRESSURIZED

Ⓑ AP3314 HOSE ASSY .25" x 48"  
CAP END

Ⓒ AP50766 HOSE ASSY 03F x 96"  
ROD END - ALWAYS PRESSURIZED  
HOSES MUST MAINTAIN EQUAL LENGTH  
AND DIAMETER

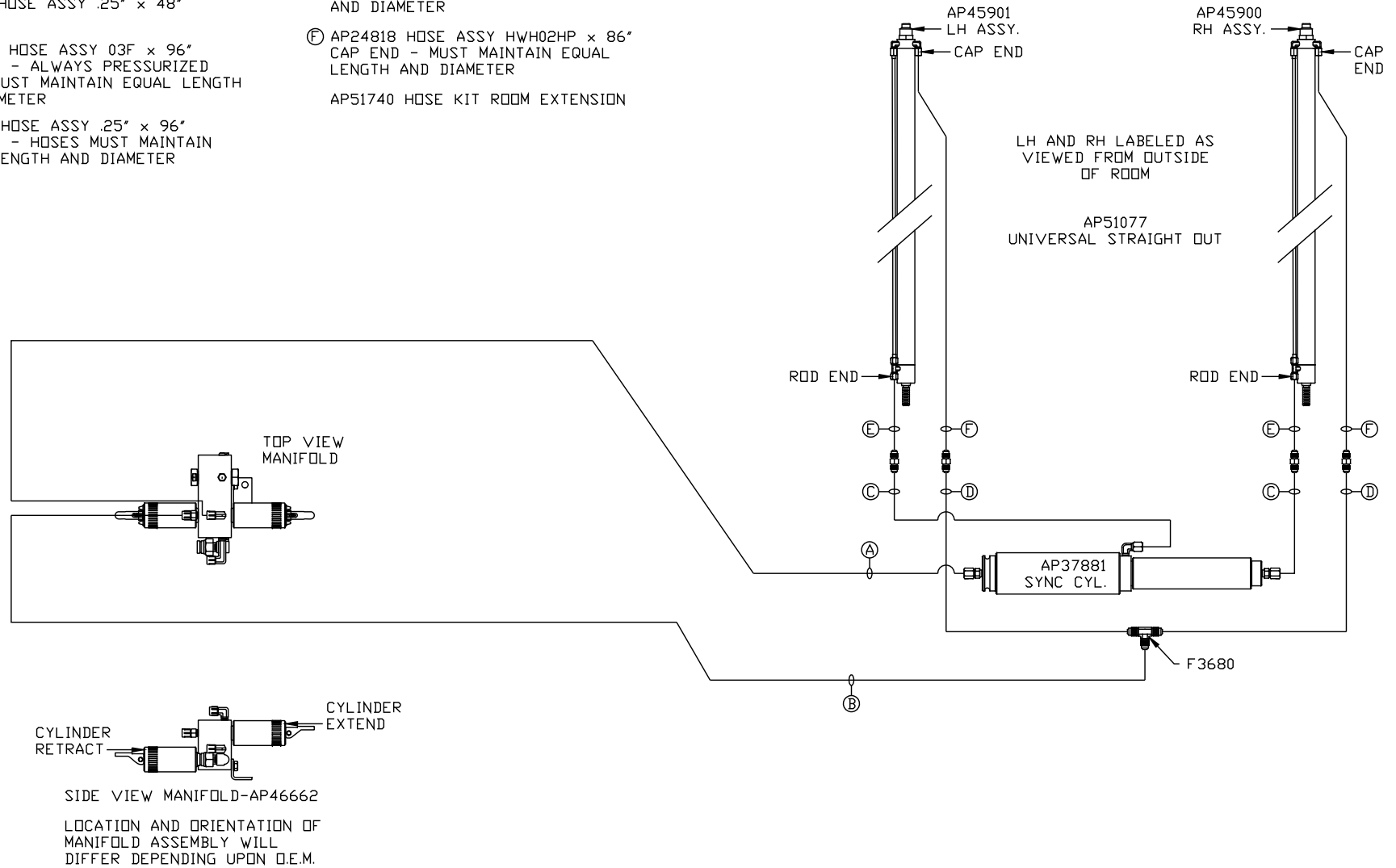
Ⓓ AP5352 HOSE ASSY .25" x 96"  
CAP END - HOSES MUST MAINTAIN  
EQUAL LENGTH AND DIAMETER

Ⓔ AP24632 HOSE ASSY HWH02HP x 48"  
ROD END - ALWAYS PRESSURIZED  
HOSES MUST MAINTAIN EQUAL LENGTH  
AND DIAMETER

Ⓕ AP24818 HOSE ASSY HWH02HP x 86"  
CAP END - MUST MAINTAIN EQUAL  
LENGTH AND DIAMETER

AP51740 HOSE KIT ROOM EXTENSION

NOTE: HOSES Ⓔ AND Ⓕ ARE INCLUDED  
WITH THE ROOM EXTENSION MECHANISM



NOTE: INSTALLATION MUST CONFORM TO GOOD SHOP PRACTICES, SAE  
STANDARDS, RVIA STANDARDS, AND OTHER APPLICABLE STANDARDS.

MP70623 B/B  
10APR13