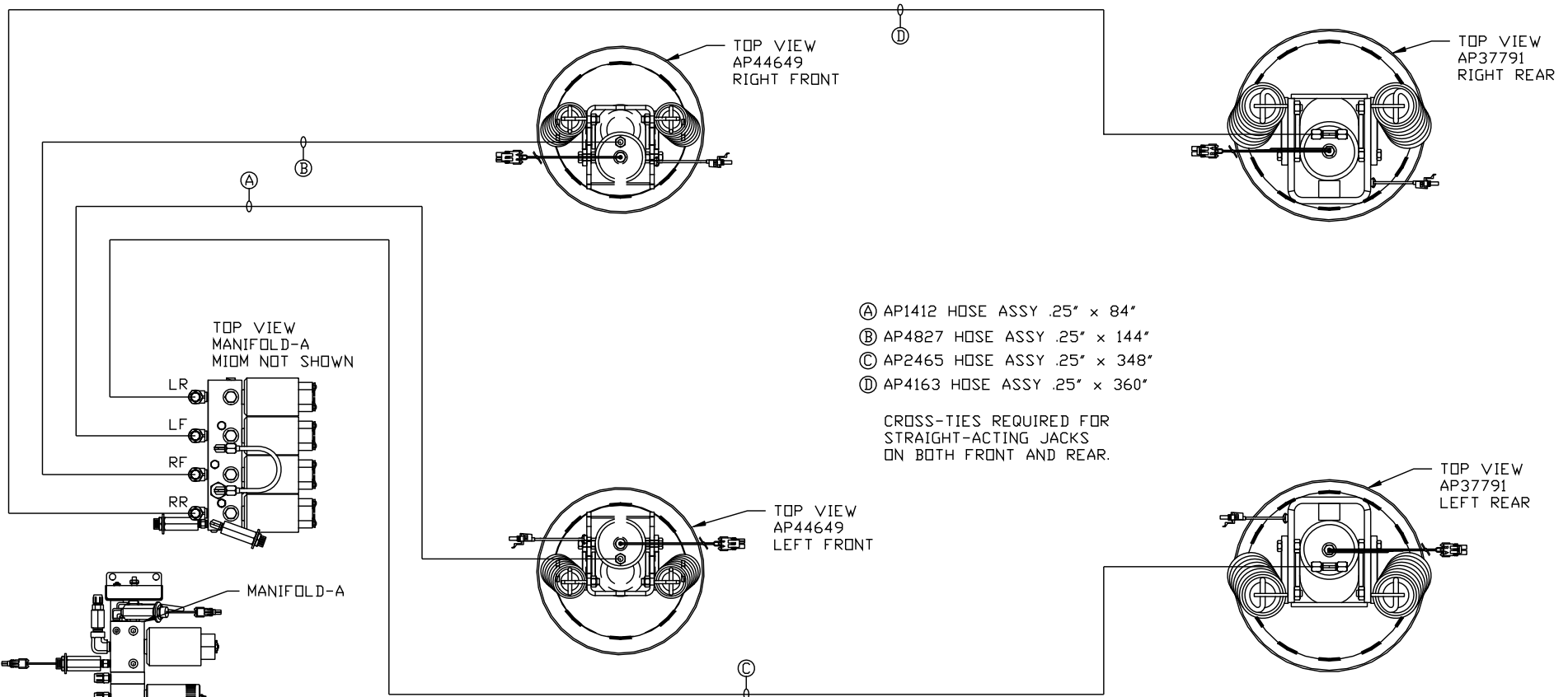


ORIENTATION
← FRONT



SIDE VIEW PUMP/MANIFOLD-AP48130

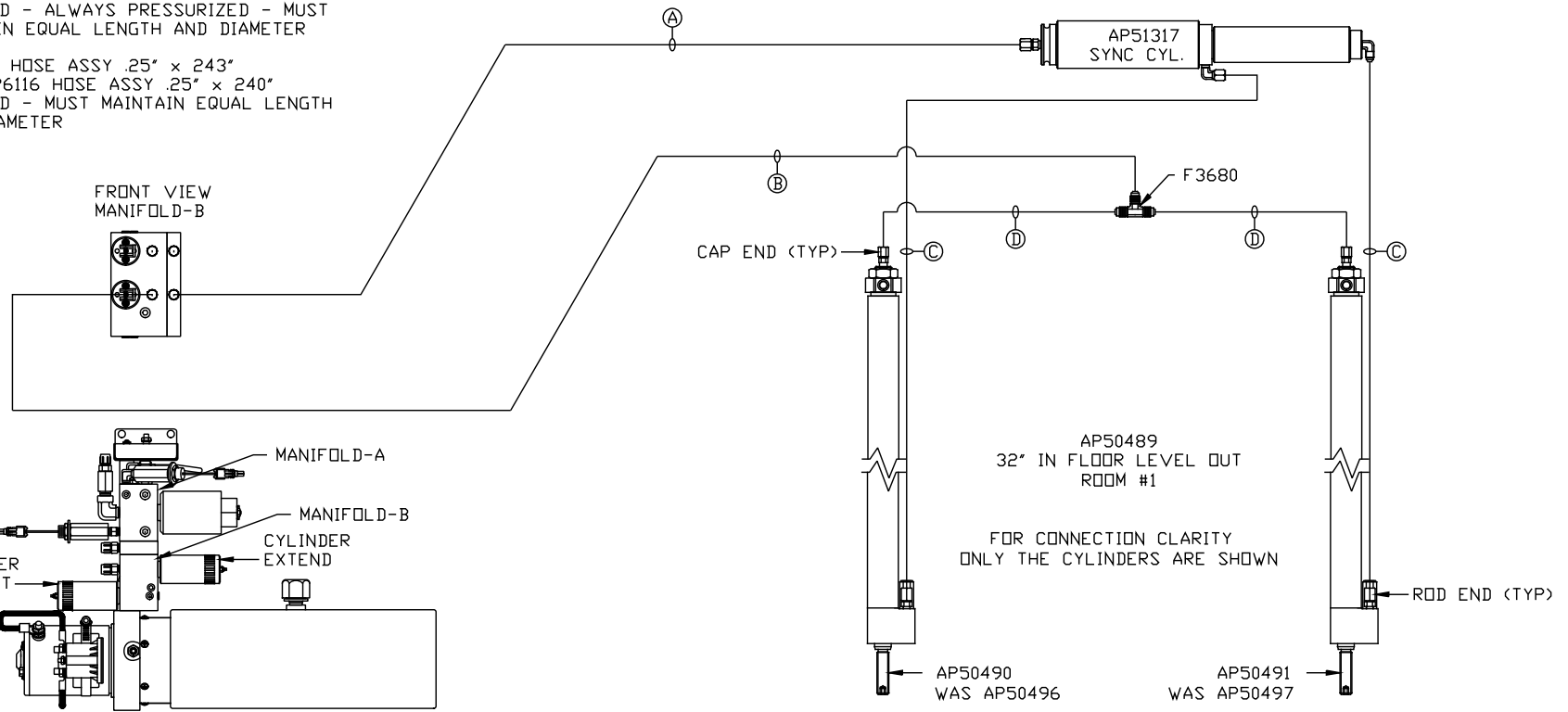
LOCATION AND ORIENTATION OF PUMP/MANIFOLD ASSEMBLY WILL DIFFER DEPENDING UPON O.E.M.

NOTE: INSTALLATION MUST CONFORM TO GOOD SHOP PRACTICES, SAE STANDARDS, RVIA STANDARDS, AND OTHER APPLICABLE STANDARDS.

		HWH		I-80 EXIT 267 SOUTH RT 1 MOSCOW, IOWA 52760	
		SCALE 1:6	DATE 06MAY13	DRAWN BY .	
1	07MAY15	UPDATED HOSES			
NO.	DATE	REVISION			
SYNC KIT: AP51795		HYD CONN DIAGRAM			
PUMP KIT: AP48122		TIFFIN			DRAWING NUMBER
JACK KIT: AP47705		THE INFORMATION DISCLOSED ON THIS DRAWING IS CONFIDENTIAL AND MUST NOT BE DISCLOSED OR USED IN ANY MANNER WHICH WILL BE DETRIMENTAL TO THE HWH CORPORATION			MP70630 A/C

ORIENTATION
 ← FRONT

- Ⓐ AP5352 HOSE ASSY .25" x 96"
 WAS AP3314 HOSE ASSY .25" x 48"
 ROD END - ALWAYS PRESSURIZED
- Ⓑ AP10566 HOSE ASSY .25" x 102"
 WAS AP3314 HOSE ASSY .25" x 48"
 CAP END
- Ⓒ AP51940 HOSE ASSY 03 x 198"
 ROD END - ALWAYS PRESSURIZED - MUST
 MAINTAIN EQUAL LENGTH AND DIAMETER
- Ⓓ AP5966 HOSE ASSY .25" x 243"
 WAS AP6116 HOSE ASSY .25" x 240"
 CAP END - MUST MAINTAIN EQUAL LENGTH
 AND DIAMETER

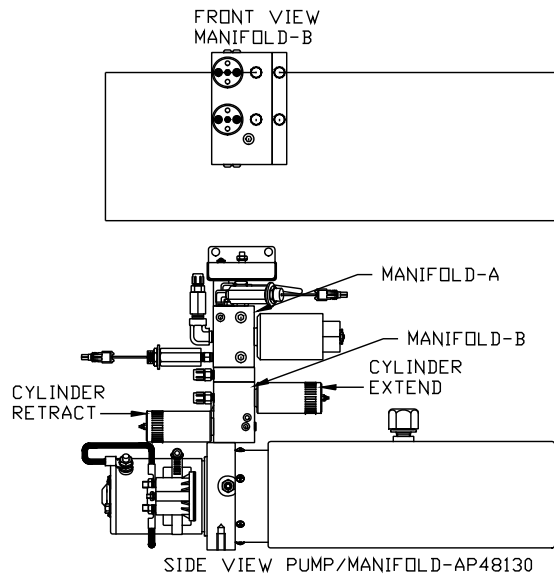


SIDE VIEW PUMP/MANIFOLD-AP48130
 LOCATION AND ORIENTATION OF
 PUMP/MANIFOLD ASSEMBLY WILL
 DIFFER DEPENDING UPON O.E.M.

NOTE: INSTALLATION MUST CONFORM TO GOOD SHOP PRACTICES, SAE
 STANDARDS, RVIA STANDARDS, AND OTHER APPLICABLE STANDARDS.

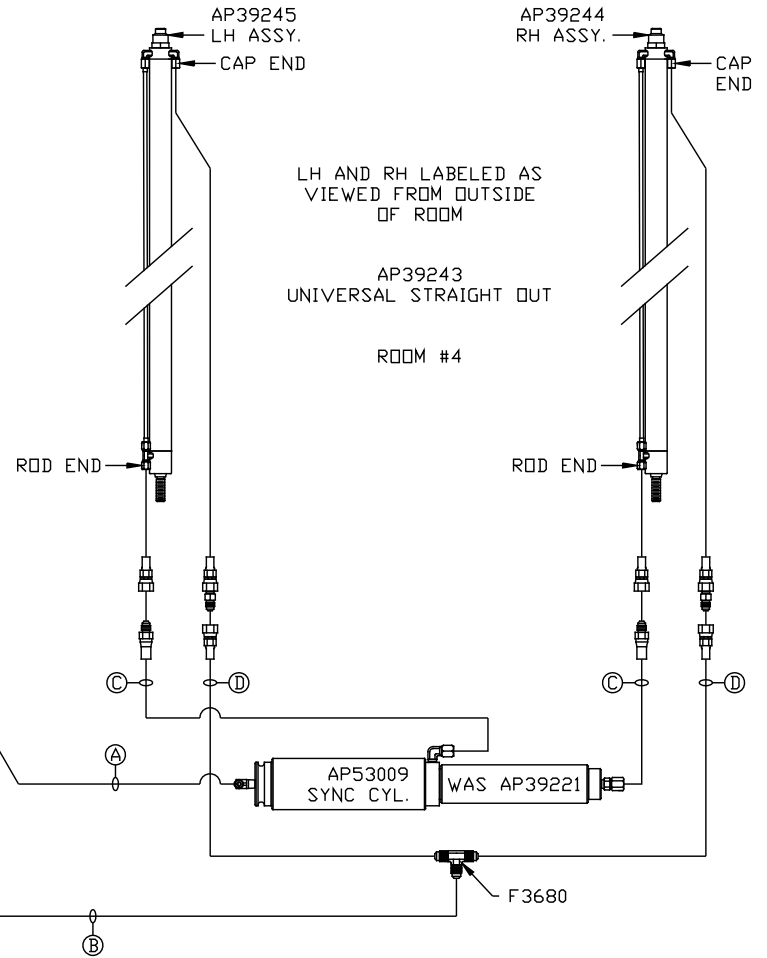
MP70630 B/C
 07MAY15

- Ⓐ AP4074 HOSE ASSY .25" x 108"
WAS AP4827 HOSE ASSY .25" x 144"
ROD END - ALWAYS PRESSURIZED
- Ⓑ AP4161 HOSE ASSY .25" x 120"
WAS AP6115 HOSE ASSY .25" x 168"
CAP END
- Ⓒ AP50600 HOSE ASSY 03 x 246" MF
ROD END - ALWAYS PRESSURIZED - MUST
MAINTAIN EQUAL LENGTH AND DIAMETER
- Ⓓ AP6116 HOSE ASSY .25" x 240"
CAP END - MUST MAINTAIN EQUAL LENGTH
AND DIAMETER



LOCATION AND ORIENTATION OF
PUMP/MANIFOLD ASSEMBLY WILL
DIFFER DEPENDING UPON O.E.M.

NOTE: INSTALLATION MUST CONFORM TO GOOD SHOP PRACTICES, SAE
STANDARDS, RVIA STANDARDS, AND OTHER APPLICABLE STANDARDS.



MP70630 C/C
07MAY15