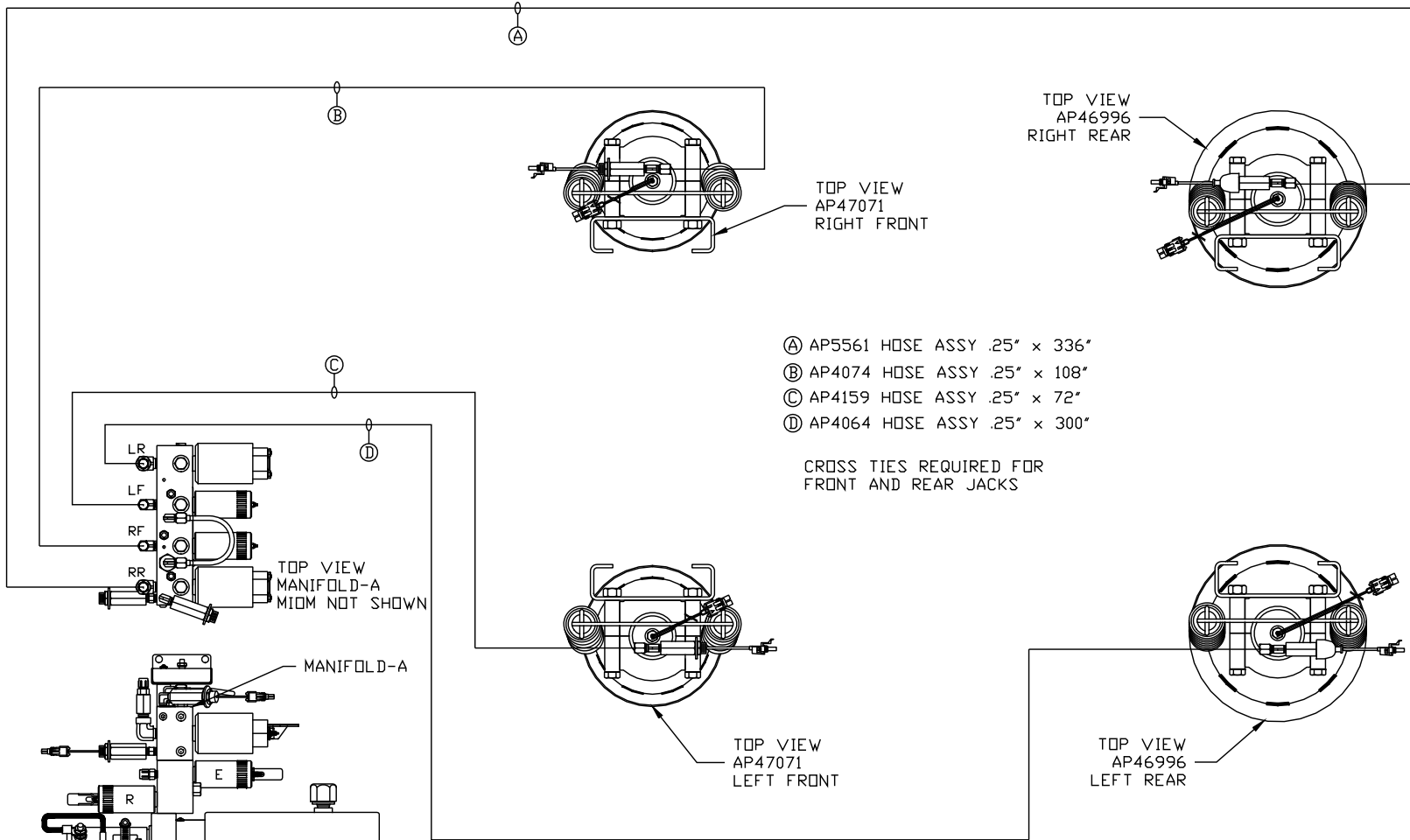


ORIENTATION  
← FRONT



- ① AP5561 HOSE ASSY .25" x 336"
- ② AP4074 HOSE ASSY .25" x 108"
- ③ AP4159 HOSE ASSY .25" x 72"
- ④ AP4064 HOSE ASSY .25" x 300"

CROSS TIES REQUIRED FOR FRONT AND REAR JACKS

SIDE VIEW PUMP/MANIFOLD-AP47692

LOCATION AND ORIENTATION OF PUMP/MANIFOLD ASSEMBLY WILL DIFFER DEPENDING UPON O.E.M.

NOTE: INSTALLATION MUST CONFORM TO GOOD SHOP PRACTICES, SAE STANDARDS, RVIA STANDARDS, AND OTHER APPLICABLE STANDARDS.

SYNC KIT: AP51768  
LEVELING SYSTEM: AP47690

NO.	DATE	REVISION
1	22JUL13	UPDATED HOSES

THE INFORMATION DISCLOSED ON THIS DRAWING IS CONFIDENTIAL AND MUST NOT BE DISCLOSED OR USED IN ANY MANNER WHICH WILL BE DETRIMENTAL TO THE HWH CORPORATION

HWH I-80 EXIT 267 SOUTH  
RT 1 MOSCOW, IOWA 52760

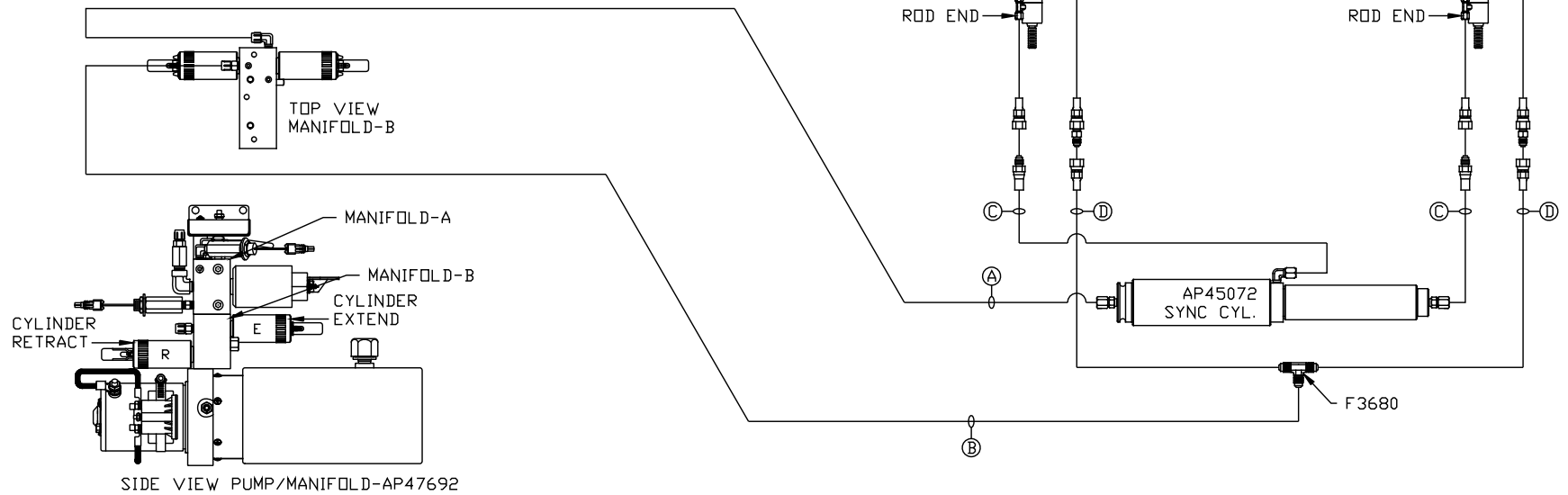
SCALE 1:6 DATE 31MAY13 DRAWN BY .

HYD CONN DIAGRAM

TIFFIN

DRAWING NUMBER  
MP70632 A/B

- Ⓐ AP5352 HOSE ASSY .25" x 96"  
ROD END - ALWAYS PRESSURIZED
- Ⓑ AP4159 HOSE ASSY .25" x 72"  
CAP END
- Ⓒ AP50164 HOSE ASSY 03 x 222" MF  
WAS AP50992 HOSE ASSY 03 x 198"  
ROD END - ALWAYS PRESSURIZED - MUST  
MAINTAIN EQUAL LENGTH AND DIAMETER
- Ⓓ AP50163 HOSE ASSY .25" x 222"  
WAS AP6601 HOSE ASSY .25" x 198"  
CAP END - MUST MAINTAIN EQUAL LENGTH  
AND DIAMETER



LOCATION AND ORIENTATION OF  
PUMP/MANIFOLD ASSEMBLY WILL  
DIFFER DEPENDING UPON O.E.M.

NOTE: INSTALLATION MUST CONFORM TO GOOD SHOP PRACTICES, SAE  
STANDARDS, RVIA STANDARDS, AND OTHER APPLICABLE STANDARDS.

MP70632 B/B  
22JUL13