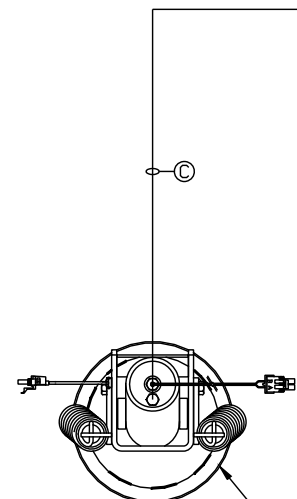
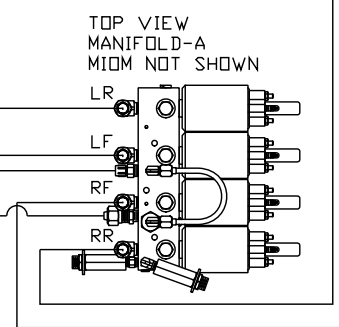
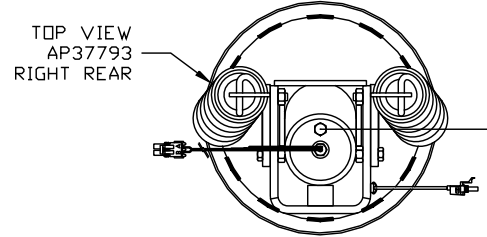
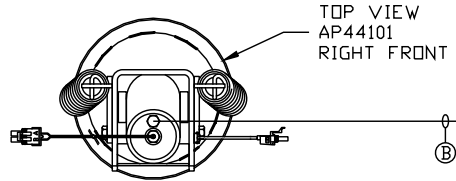
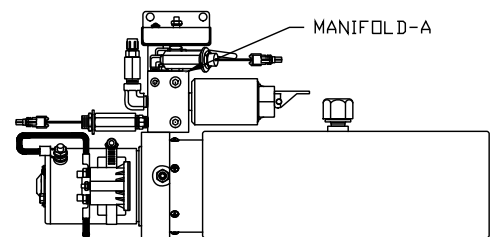
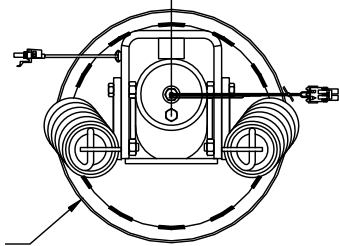


ORIENTATION
← FRONT



- Ⓐ AP7832 HOSE ASSY .25" x 100"
- Ⓑ AP4669 HOSE ASSY .25" x 408"
- Ⓒ AP7130 HOSE ASSY .25" x 412"
- Ⓓ AP4161 HOSE ASSY .25" x 120"

CROSS TIES REQUIRED FOR
FRONT AND REAR JACKS



SIDE VIEW PUMP/MANIFOLD-AP51515

LOCATION AND ORIENTATION OF
PUMP/MANIFOLD ASSEMBLY WILL
DIFFER DEPENDING UPON O.E.M.

NOTE: INSTALLATION MUST CONFORM TO GOOD SHOP PRACTICES, SAE STANDARDS, RVIA STANDARDS, AND OTHER APPLICABLE STANDARDS.

1	07MAY15	UPDATED HOSES
NO.	DATE	REVISION
SYNC KIT: AP51753		
PUMP KIT: AP51520	THE INFORMATION DISCLOSED ON THIS DRAWING IS CONFIDENTIAL AND MUST NOT BE DISCLOSED OR USED IN ANY MANNER WHICH WILL BE DETRIMENTAL TO THE HWH CORPORATION	
JACK KIT: AP48120		

HWH			I-80 EXIT 267 SOUTH RT 1 MOSCOW, IOWA 52760		
SCALE 1:6	DATE 31MAY13	DRAWN BY .			
HYD CONN DIAGRAM					
TIFFIN				DRAWING NUMBER MP70636 A/C	

ORIENTATION

← FRONT

Ⓐ AP4073 HOSE ASSY .25" x 60"
ROD END - ALWAYS PRESSURIZED

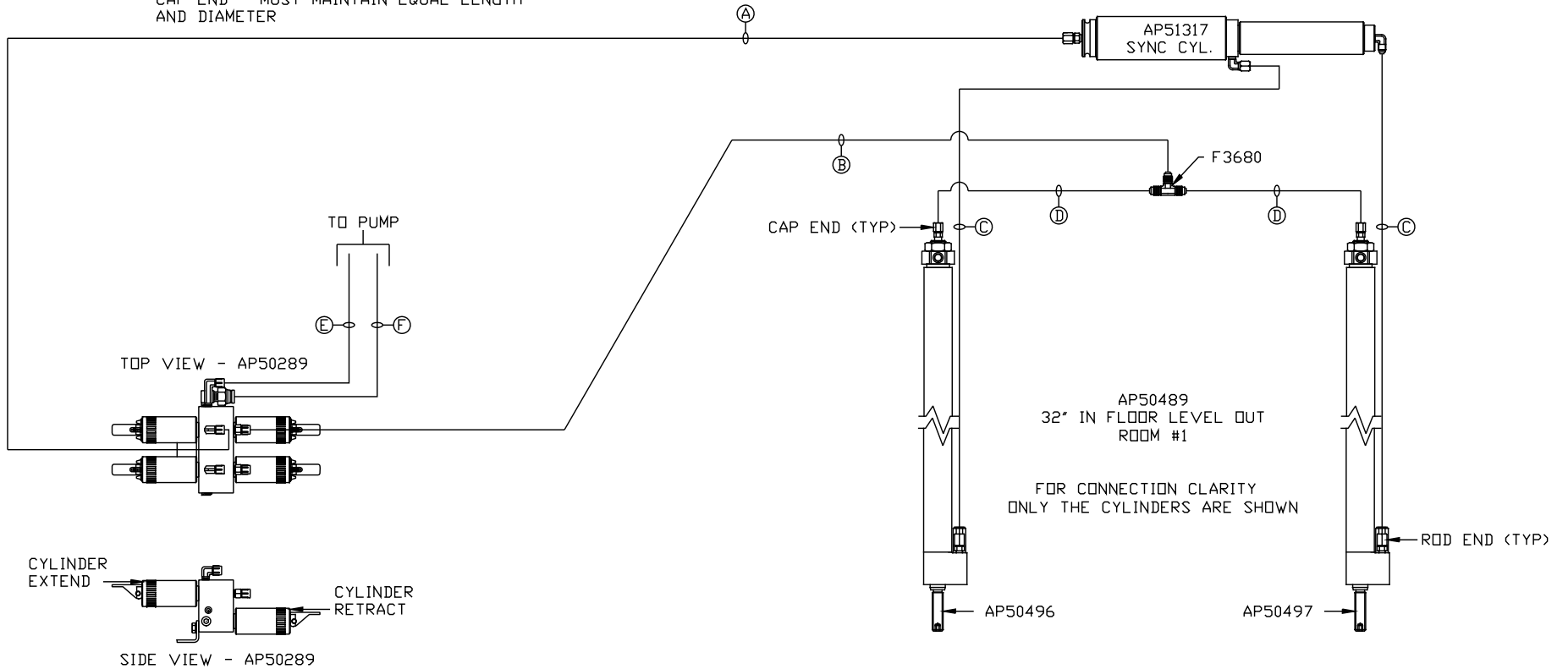
Ⓑ AP5352 HOSE ASSY .25" x 96"
CAP END

Ⓒ AP49517 HOSE ASSY 03 x 180"
WAS AP49246 HOSE ASSY 03 x 156"
ROD END - ALWAYS PRESSURIZED - MUST
MAINTAIN EQUAL LENGTH AND DIAMETER

Ⓓ AP6115 HOSE ASSY .25" x 168"
WAS AP4827 HOSE ASSY .25" x 144"
CAP END - MUST MAINTAIN EQUAL LENGTH
AND DIAMETER

Ⓔ AP51499 HOSE ASSY .25" x 402"
PRESSURE

Ⓕ M401501 RETURN LINE .5" x 396"
RETURN

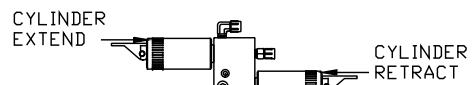
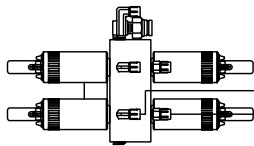


NOTE: INSTALLATION MUST CONFORM TO GOOD SHOP PRACTICES, SAE STANDARDS, RVIA STANDARDS, AND OTHER APPLICABLE STANDARDS.

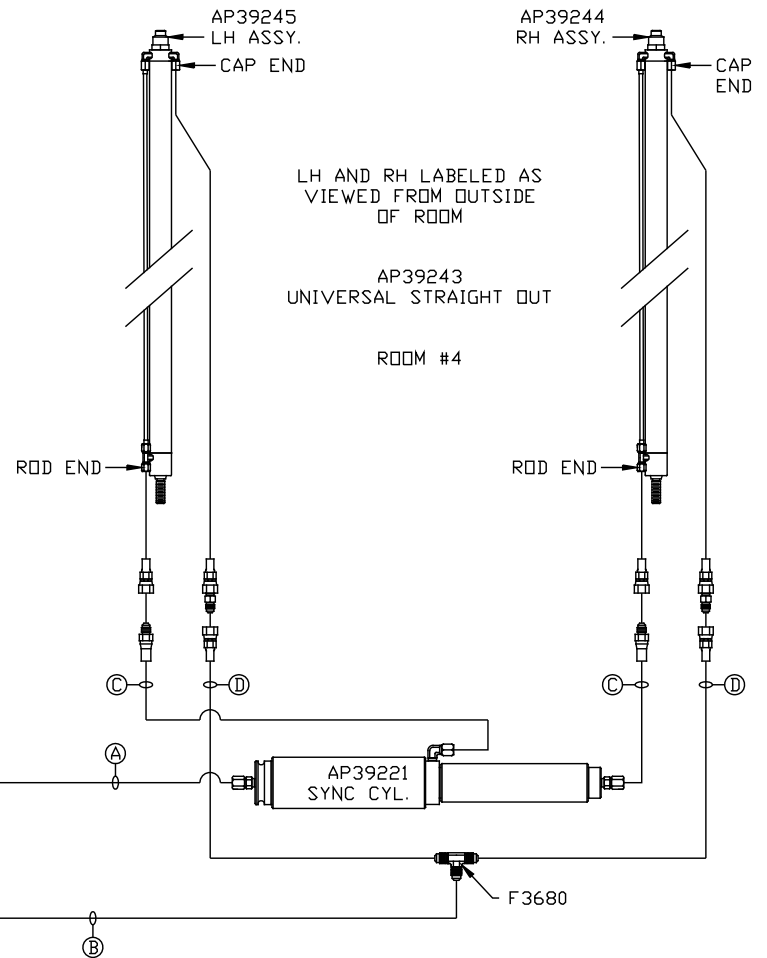
MP70636 B/C
07MAY15

- Ⓐ AP4159 HOSE ASSY .25" x 72"
ROD END - ALWAYS PRESSURIZED
- Ⓑ AP5352 HOSE ASSY .25" x 96"
CAP END
- Ⓒ AP50164 HOSE ASSY 03 x 222" MF
ROD END - ALWAYS PRESSURIZED - MUST
MAINTAIN EQUAL LENGTH AND DIAMETER
- Ⓓ AP50163 HOSE ASSY .25" x 222"
CAP END - MUST MAINTAIN EQUAL LENGTH
AND DIAMETER

TOP VIEW - AP50289



SIDE VIEW - AP50289



NOTE: INSTALLATION MUST CONFORM TO GOOD SHOP PRACTICES, SAE STANDARDS, RVIA STANDARDS, AND OTHER APPLICABLE STANDARDS.

MP70636 C/C
31MAY13