

- Ⓐ HOSE ASSY .25" - RF ROD END
- Ⓑ HOSE ASSY .25/05 - RF CAP END
- Ⓒ HOSE ASSY .25" - LF ROD END
- Ⓓ HOSE ASSY .25/05 - LF CAP END
- Ⓔ HOSE ASSY .25" - RR ROD END
- Ⓕ HOSE ASSY .25/05 - RR CAP END
- Ⓖ HOSE ASSY .25" - LR ROD END
- Ⓗ HOSE ASSY .25/05 - LR CAP END

NOTE: INSTALLATION MUST CONFORM TO GOOD SHOP PRACTICES, SAE STANDARDS, RVIA STANDARDS, AND OTHER APPLICABLE STANDARDS.

PROJECT KIT: AP52003

⚠	07APR15	WAS AP46190
⚠	04SEP13	WAS .5" OD
NO.	DATE	REVISION

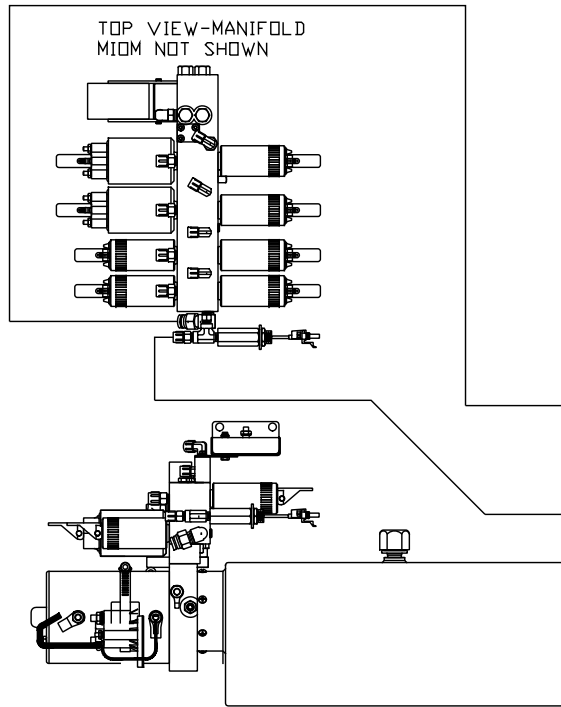
THE INFORMATION DISCLOSED ON THIS DRAWING IS CONFIDENTIAL AND MUST NOT BE DISCLOSED OR USED IN ANY MANNER WHICH WILL BE DETRIMENTAL TO THE HWH CORPORATION

<b>HWH</b>		I-80 EXIT 267 SOUTH RT 1 MOSCOW, IOWA 52760	
SCALE 1:6	DATE 20JUN13	DRAWN BY .	
<b>HYD CONN DIAGRAM</b>			
<b>CHARIOT VANS</b>			DRAWING NUMBER <b>MP70638 A/C</b>

NOTE: HOSES (C) AND (F) ARE INCLUDED WITH THE ROOM EXTENSION MECHANISM

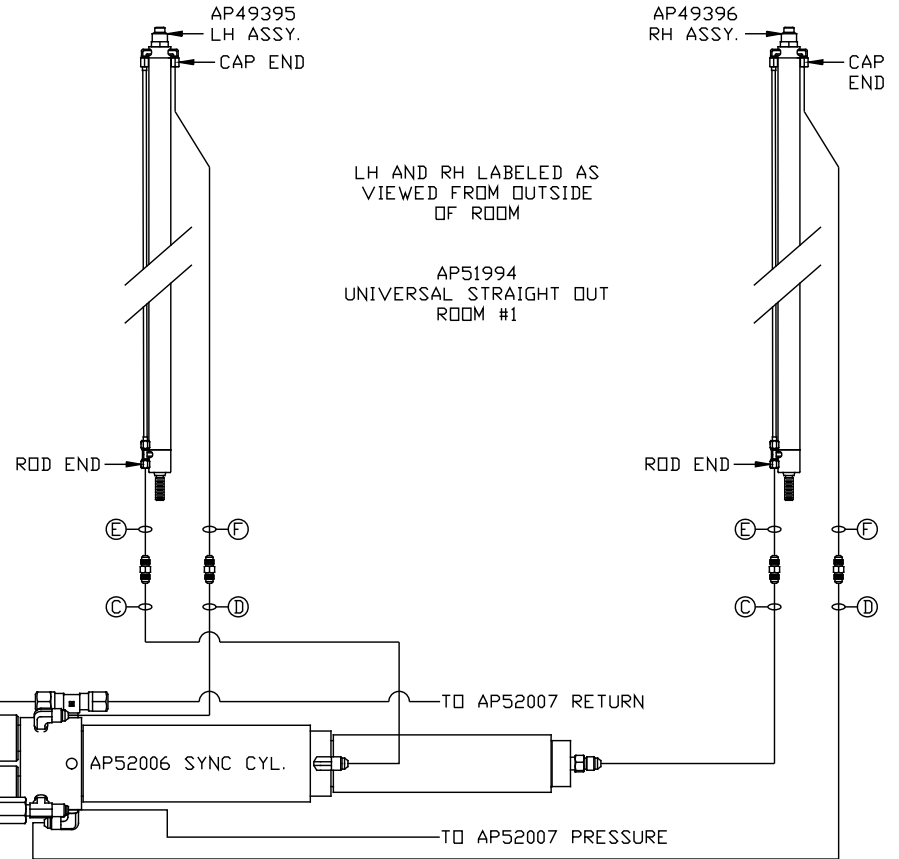
- (A) HOSE ASSY .25" ID PRESSURE
- (B) .375" OD NYLON TUBING RETURN
- (C) HOSE ASSY .125" ID DR 03 ROD END - ALWAYS PRESSURIZED HOSES MUST MAINTAIN EQUAL LENGTH AND DIAMETER
- (D) HOSE ASSY .25" ID CAP END - HOSES MUST MAINTAIN EQUAL LENGTH AND DIAMETER

- (E) AP24632 HOSE ASSY HWH02HP x 48" ROD END - ALWAYS PRESSURIZED - HOSES MUST MAINTAIN EQUAL LENGTH AND DIAMETER
- (F) AP24818 HOSE ASSY HWH02HP x 86" CAP END - MUST MAINTAIN EQUAL LENGTH AND DIAMETER



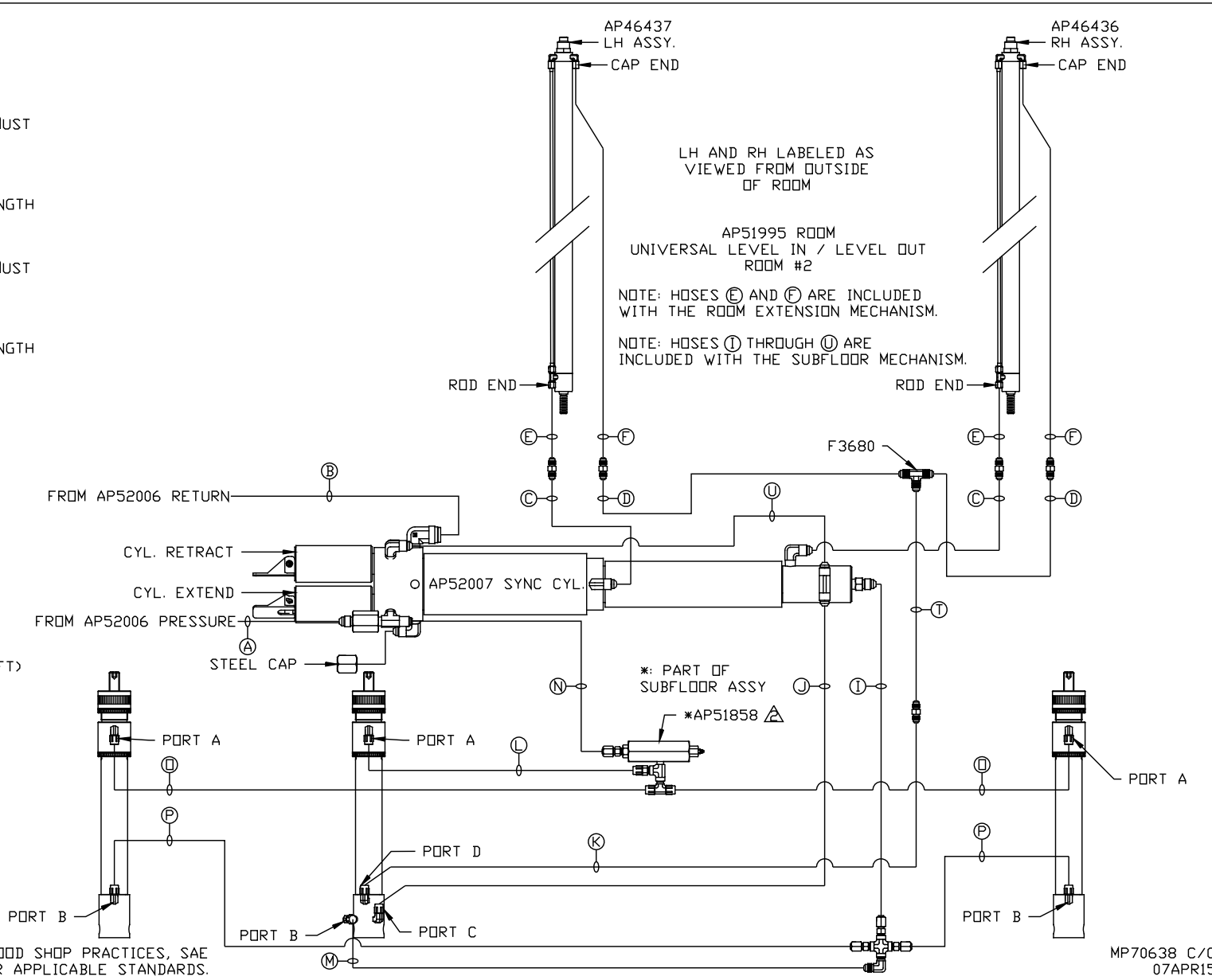
LOCATION AND ORIENTATION OF PUMP/MANIFOLD ASSEMBLY WILL DIFFER DEPENDING UPON O.E.M.

NOTE: INSTALLATION MUST CONFORM TO GOOD SHOP PRACTICES, SAE STANDARDS, RVIA STANDARDS, AND OTHER APPLICABLE STANDARDS.



MP70638 B/C  
04SEP13

- Ⓐ HOSE ASSY .25" ID  
PRESSURE
- Ⓑ .375" OD NYLON TUBING  $\triangle$   
RETURN
- Ⓒ HOSE ASSY .125" ID OR 03  
ROD END - ALWAYS PRESSURIZED - MUST  
BE HIGH PRESSURE HOSES OF EQUAL  
LENGTH AND DIAMETER
- Ⓓ HOSE ASSY .25" ID  
CAP END - MUST MAINTAIN EQUAL LENGTH  
AND DIAMETER
- Ⓔ AP24632 HOSE ASSY HWH02HP x 48"  
ROD END - ALWAYS PRESSURIZED - MUST  
BE HIGH PRESSURE HOSES OF EQUAL  
LENGTH AND DIAMETER
- Ⓕ AP24818 HOSE ASSY HWH02HP x 86"  
CAP END - MUST MAINTAIN EQUAL LENGTH  
AND DIAMETER
- Ⓖ AP4218 HOSE ASSY .25" x 40"  
CAP END (LIFT)
- Ⓙ AP2443 HOSE ASSY .25" x 146"  
CAP END (LIFT)
- Ⓚ AP4767 HOSE ASSY .25" x 80"  
CAP END (ROOM)
- Ⓛ AP54060 HOSE ASSY .25" x 24"  
ROD END (LIFT) - ALWAYS  
PRESSURIZED
- Ⓜ AP4217 HOSE ASSY .25" x 30"  
CAP END (LIFT)
- Ⓝ AP4075 HOSE ASSY .25" x 42"  
ROD END - ALWAYS PRESSURIZED (LIFT)
- Ⓟ AP5384 HOSE ASSY .25" x 116"  
ROD END (LIFT) - ALWAYS  
PRESSURIZED - MUST BE HOSES  
OF EQUAL LENGTH AND DIAMETER
- Ⓠ AP4906 HOSE ASSY .25" x 125"  
CAP END (LIFT) - MUST BE HOSES  
OF EQUAL LENGTH AND DIAMETER
- Ⓢ HOSE ASSY .25" ID  
CAP END (LIFT)
- Ⓣ HOSE ASSY .25" ID  
CAP END (ROOM)



NOTE: INSTALLATION MUST CONFORM TO GOOD SHOP PRACTICES, SAE STANDARDS, RVIA STANDARDS, AND OTHER APPLICABLE STANDARDS.

MP70638 C/C  
07APR15