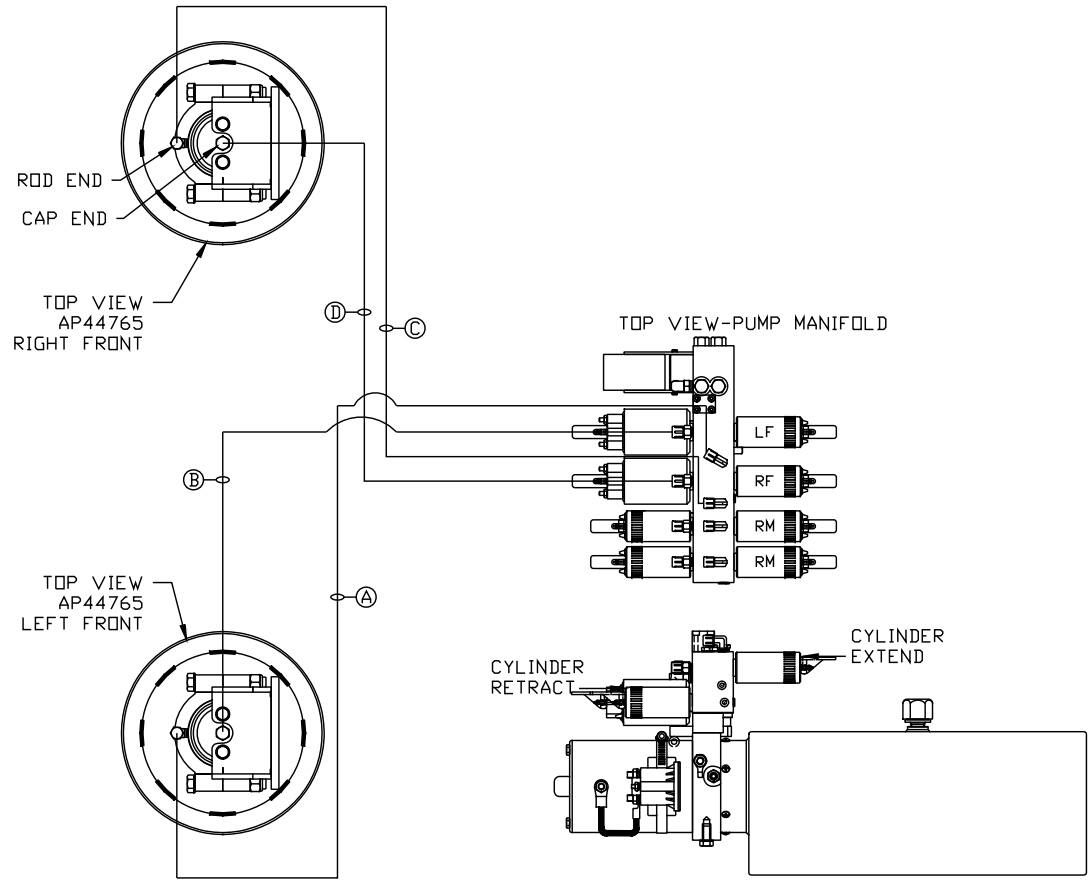


ORIENTATION  
← FRONT



- Ⓐ AP4064 HOSE ASSY 04 x 300"  
WAS AP4061 HOSE ASSY .25" x 216"  
ROD END
- Ⓑ AP54013 HOSE ASSY 05 x 288"  
WAS AP46310 HOSE ASSY .25/05 x 192"  
CAP END
- Ⓒ AP4064 HOSE ASSY 04 x 300"  
WAS AP4161 HOSE ASSY .25" x 120"  
ROD END
- Ⓓ AP54013 HOSE ASSY 05 x 288"  
WAS AP45250 HOSE ASSY .25/05 x 96"  
CAP END

SIDE VIEW PUMP/MANIFOLD-AP52036  
LOCATION AND ORIENTATION OF  
PUMP/MANIFOLD ASSEMBLY WILL  
DIFFER DEPENDING UPON O.E.M.

NOTE: INSTALLATION MUST CONFORM TO GOOD SHOP PRACTICES, SAE STANDARDS, RVIA STANDARDS, AND OTHER APPLICABLE STANDARDS.

CONTROL PACKAGE: AP52029

		HWH I-80 EXIT 267 SOUTH RT 1 MOSCOW, IOWA 52760	
⚠ 16FEB16	UPDATED HOSES	SCALE 1:6	DATE 15AUG13
⚠ 07MAY15	CORRECTED TYPO	DRAWN BY .	
NO.	DATE	REVISION	
THE INFORMATION DISCLOSED ON THIS DRAWING IS CONFIDENTIAL AND MUST NOT BE DISCLOSED OR USED IN ANY MANNER WHICH WILL BE DETRIMENTAL TO THE HWH CORPORATION		HYD CONN DIAGRAM	
		RENEGADE/KIBBI	DRAWING NUMBER MP70645 A/C

ORIENTATION

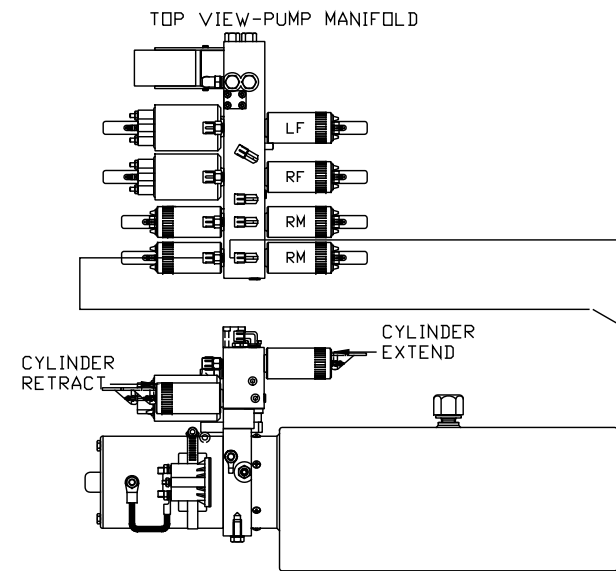
← FRONT

\*: PART OF THE ROOM  
EXTENSION MECHANISM.

- Ⓐ AP6116 HOSE ASSY .25" x 240"  
ROD END - ALWAYS PRESSURIZED
- Ⓑ AP6116 HOSE ASSY .25" x 240"  
CAP END
- Ⓒ AP49417 HOSE ASSY 03 x 96"  
ROD END - ALWAYS PRESSURIZED - MUST  
MAINTAIN EQUAL LENGTH AND DIAMETER
- Ⓓ AP1412 HOSE ASSY .25" x 84"  
CAP END - MUST MAINTAIN EQUAL LENGTH  
AND DIAMETER

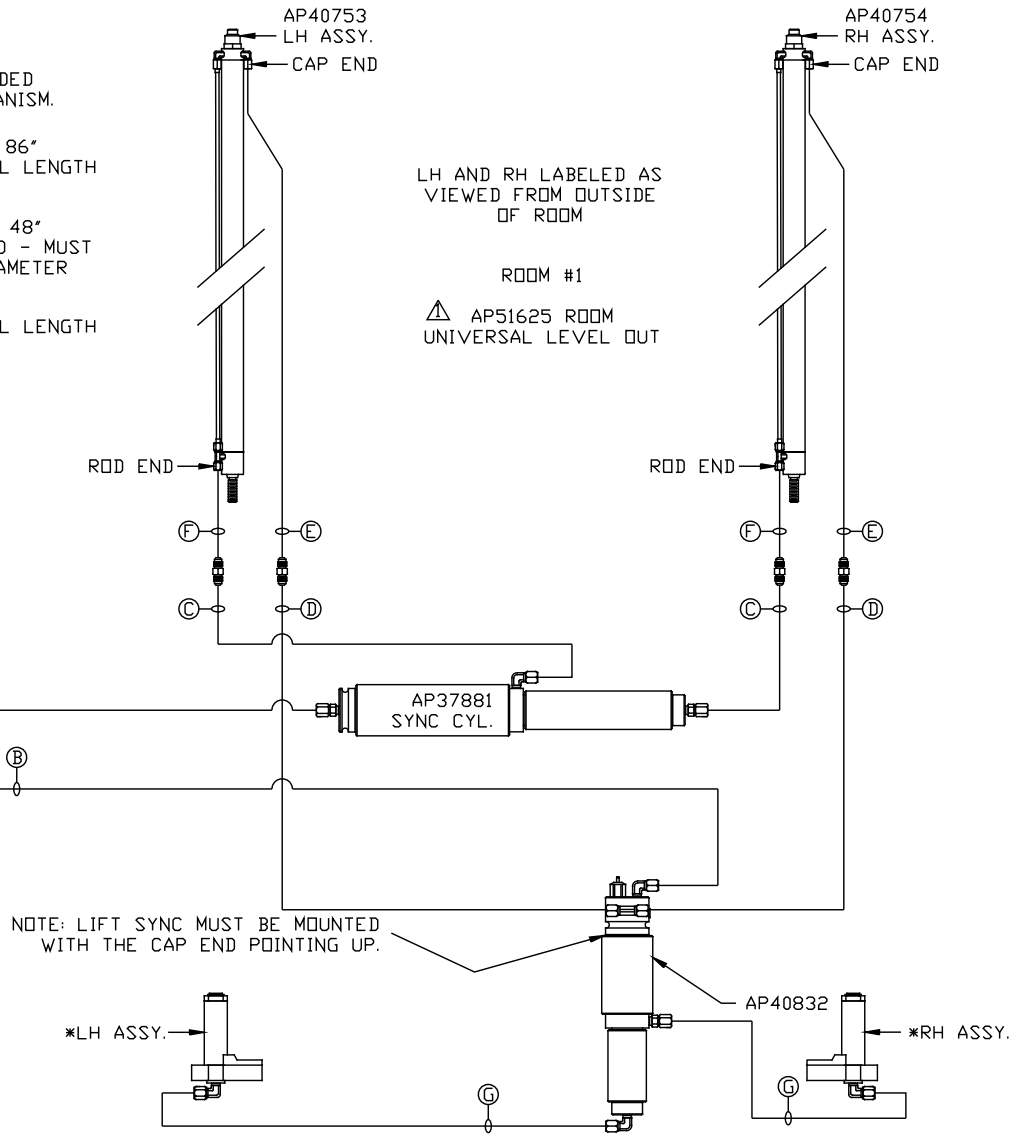
NOTE: HOSES Ⓔ AND Ⓕ ARE INCLUDED  
WITH THE ROOM EXTENSION MECHANISM.

- Ⓔ AP24818 HOSE ASSY HWH02HP x 86"  
CAP END - MUST MAINTAIN EQUAL LENGTH  
AND DIAMETER
- Ⓕ AP24632 HOSE ASSY HWH02HP x 48"  
ROD END - ALWAYS PRESSURIZED - MUST  
MAINTAIN EQUAL LENGTH AND DIAMETER
- Ⓖ AP46693 HOSE ASSY 03 x 48"  
CAP END - MUST MAINTAIN EQUAL LENGTH  
AND DIAMETER



SIDE VIEW PUMP/MANIFOLD-AP52036  
LOCATION AND ORIENTATION OF  
PUMP/MANIFOLD ASSEMBLY WILL  
DIFFER DEPENDING UPON O.E.M.

NOTE: INSTALLATION MUST CONFORM TO GOOD SHOP PRACTICES, SAE  
STANDARDS, RVIA STANDARDS, AND OTHER APPLICABLE STANDARDS.



LH AND RH LABELED AS  
VIEWED FROM OUTSIDE  
OF ROOM

ROOM #1

▲ AP51625 ROOM  
UNIVERSAL LEVEL OUT

NOTE: LIFT SYNC MUST BE MOUNTED  
WITH THE CAP END POINTING UP.

\*: PART OF THE ROOM  
EXTENSION MECHANISM.

- Ⓐ AP6116 HOSE ASSY .25" x 240"  
ROD END - ALWAYS PRESSURIZED
- Ⓑ AP6116 HOSE ASSY .25" x 240"  
CAP END
- Ⓒ AP49417 HOSE ASSY 03 x 96"  
ROD END - ALWAYS PRESSURIZED - MUST  
MAINTAIN EQUAL LENGTH AND DIAMETER
- Ⓓ AP1412 HOSE ASSY .25" x 84"  
CAP END - MUST MAINTAIN EQUAL LENGTH  
AND DIAMETER

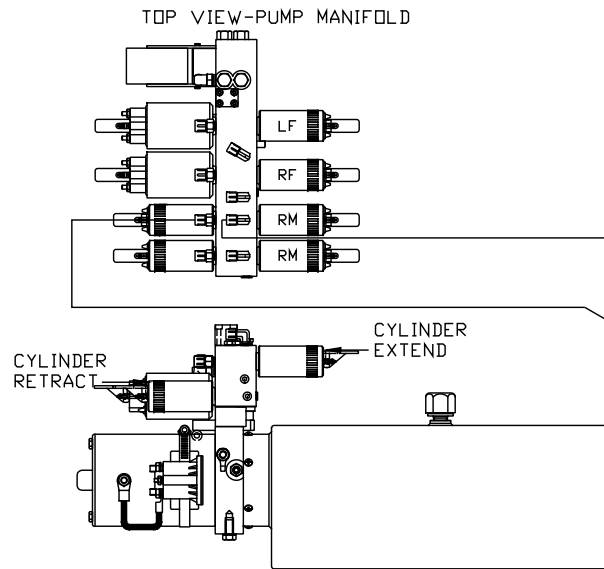
NOTE: HOSES Ⓔ AND Ⓕ ARE INCLUDED  
WITH THE ROOM EXTENSION MECHANISM.

- Ⓔ AP24818 HOSE ASSY HWH02HP x 86"  
CAP END - MUST MAINTAIN EQUAL LENGTH  
AND DIAMETER
- Ⓕ AP24632 HOSE ASSY HWH02HP x 48"  
ROD END - ALWAYS PRESSURIZED - MUST  
MAINTAIN EQUAL LENGTH AND DIAMETER
- Ⓖ AP46693 HOSE ASSY 03 x 48"  
CAP END - MUST MAINTAIN EQUAL LENGTH  
AND DIAMETER

LH AND RH LABELED AS  
VIEWED FROM OUTSIDE  
OF ROOM

ROOM #2

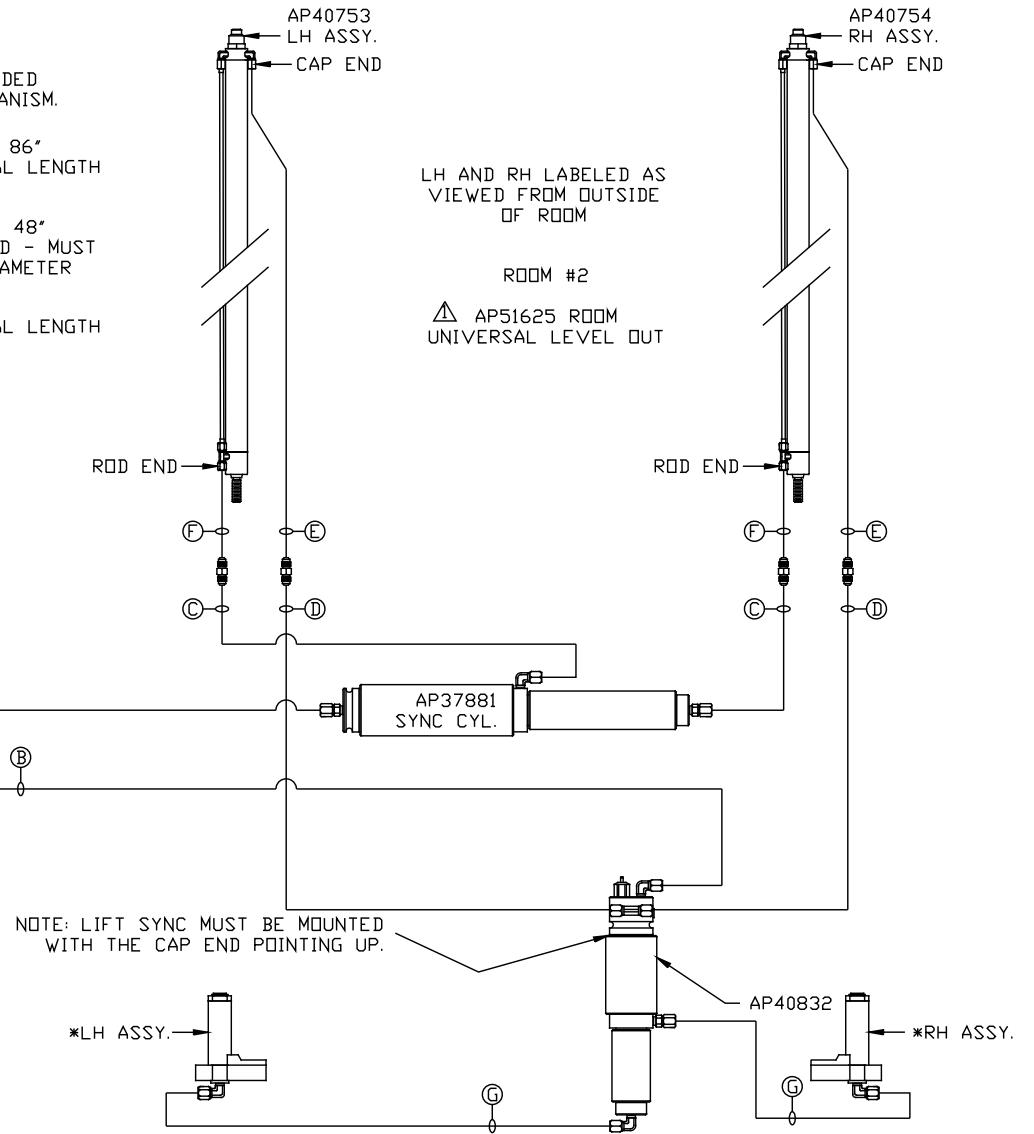
▲ AP51625 ROOM  
UNIVERSAL LEVEL OUT



SIDE VIEW PUMP/MANIFOLD-AP52036

LOCATION AND ORIENTATION OF  
PUMP/MANIFOLD ASSEMBLY WILL  
DIFFER DEPENDING UPON O.E.M.

NOTE: INSTALLATION MUST CONFORM TO GOOD SHOP PRACTICES, SAE  
STANDARDS, RVIA STANDARDS, AND OTHER APPLICABLE STANDARDS.



MP70645 C/C  
07MAY15