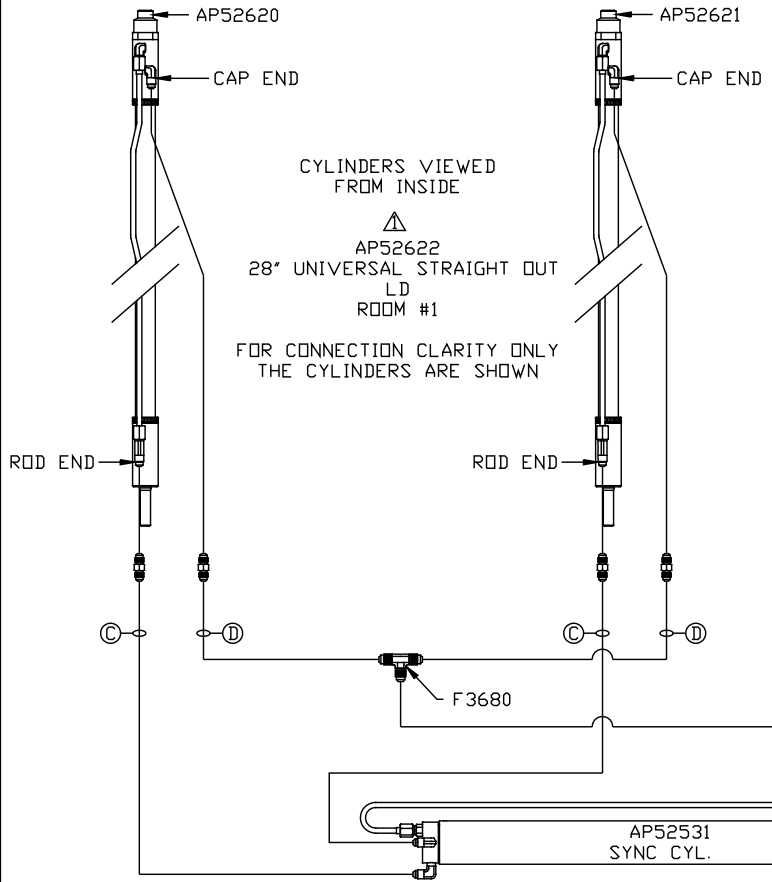
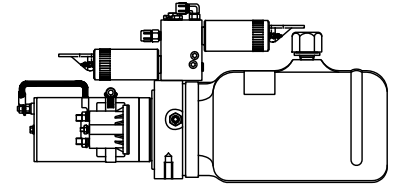
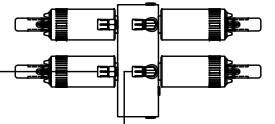


NOTE: HOSES (C) AND (F) ARE INCLUDED WITH THE ROOM EXTENSION MECHANISM.

- (A) AP24647 HOSE ASSY HWH02HP x 162"
ROD END - ALWAYS PRESSURIZED
- (B) AP49517 HOSE ASSY 03 x 180"
CAP END
- (C) AP24651 HOSE ASSY HWH02HP x 180"
ROD END - ALWAYS PRESSURIZED - MUST BE HIGH PRESSURE HOSES OF EQUAL LENGTH AND DIAMETER
- (D) AP50261 HOSE ASSY 03 x 168"
CAP END - MUST MAINTAIN EQUAL LENGTH AND DIAMETER



TOP VIEW - MANIFOLD



SIDE VIEW PUMP/MANIFOLD-AP48889

LOCATION AND ORIENTATION OF PUMP/MANIFOLD ASSEMBLY WILL DIFFER DEPENDING UPON O.E.M.

NOTE: INSTALLATION MUST CONFORM TO GOOD SHOP PRACTICES, SAE STANDARDS, RVIA STANDARDS, AND OTHER APPLICABLE STANDARDS.

PUMP/HOSE/HARN KIT: AP52295

△	07MAY15	ADDED ROOM #1 KIT #
NO.	DATE	REVISION
THE INFORMATION DISCLOSED ON THIS DRAWING IS CONFIDENTIAL AND MUST NOT BE DISCLOSED OR USED IN ANY MANNER WHICH WILL BE DETRIMENTAL TO THE HWH CORPORATION		

HWH I-80 EXIT 267 SOUTH
RT 1 MOSCOW, IOWA 52760

SCALE 1:6 DATE 09OCT13 DRAWN BY .

HYD CONN DIAGRAM

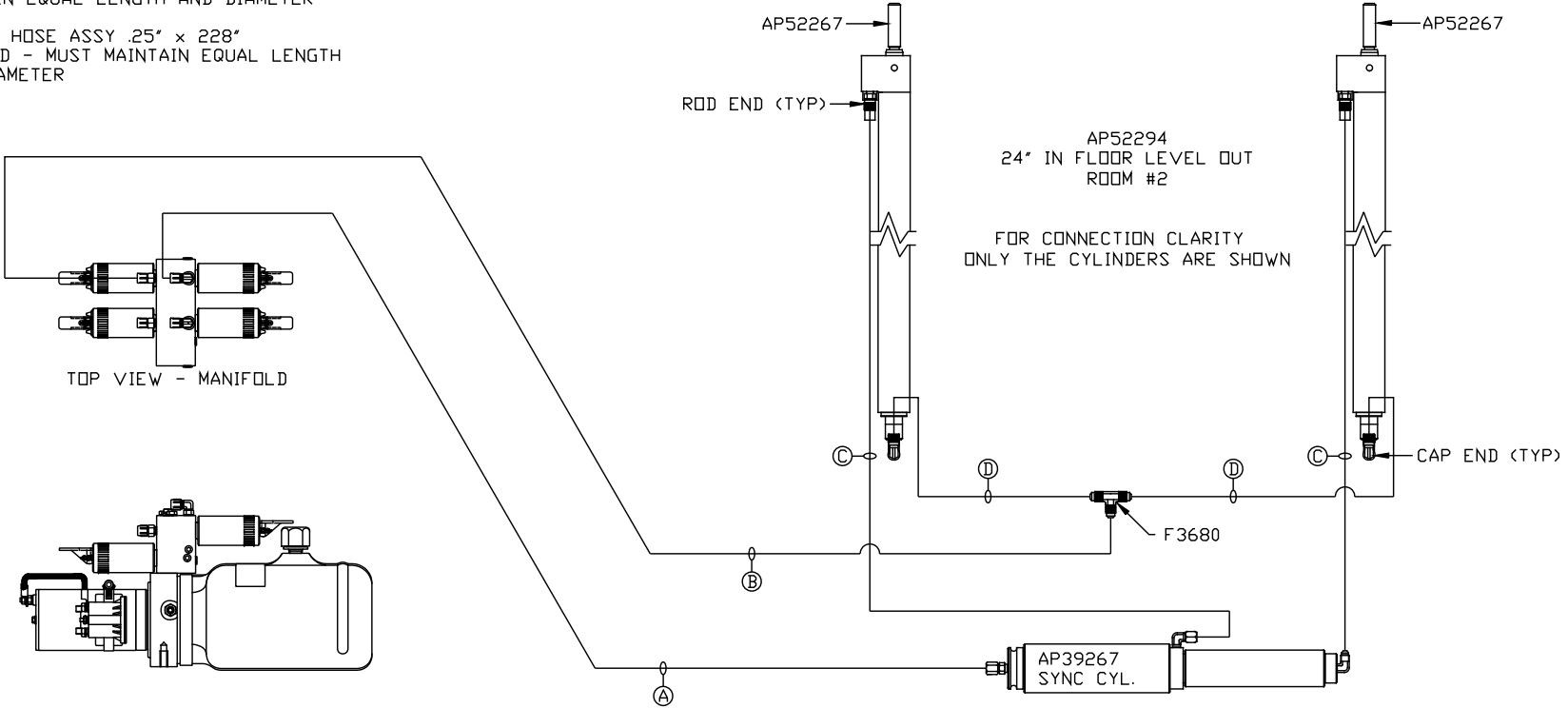
TIFFIN

DRAWING NUMBER
MP70668 A/B

ORIENTATION

← FRONT

- Ⓐ AP10913 HOSE ASSY .25" x 161"
ROD END - ALWAYS PRESSURIZED
- Ⓑ AP7358 HOSE ASSY .25" x 175"
CAP END
- Ⓒ AP49248 HOSE ASSY 03" x 288"
ROD END - ALWAYS PRESSURIZED - MUST
MAINTAIN EQUAL LENGTH AND DIAMETER
- Ⓓ AP5924 HOSE ASSY .25" x 228"
CAP END - MUST MAINTAIN EQUAL LENGTH
AND DIAMETER



SIDE VIEW PUMP/MANIFOLD-AP48889
LOCATION AND ORIENTATION OF
PUMP/MANIFOLD ASSEMBLY WILL
DIFFER DEPENDING UPON O.E.M.

NOTE: INSTALLATION MUST CONFORM TO GOOD SHOP PRACTICES, SAE
STANDARDS, RVIA STANDARDS, AND OTHER APPLICABLE STANDARDS.