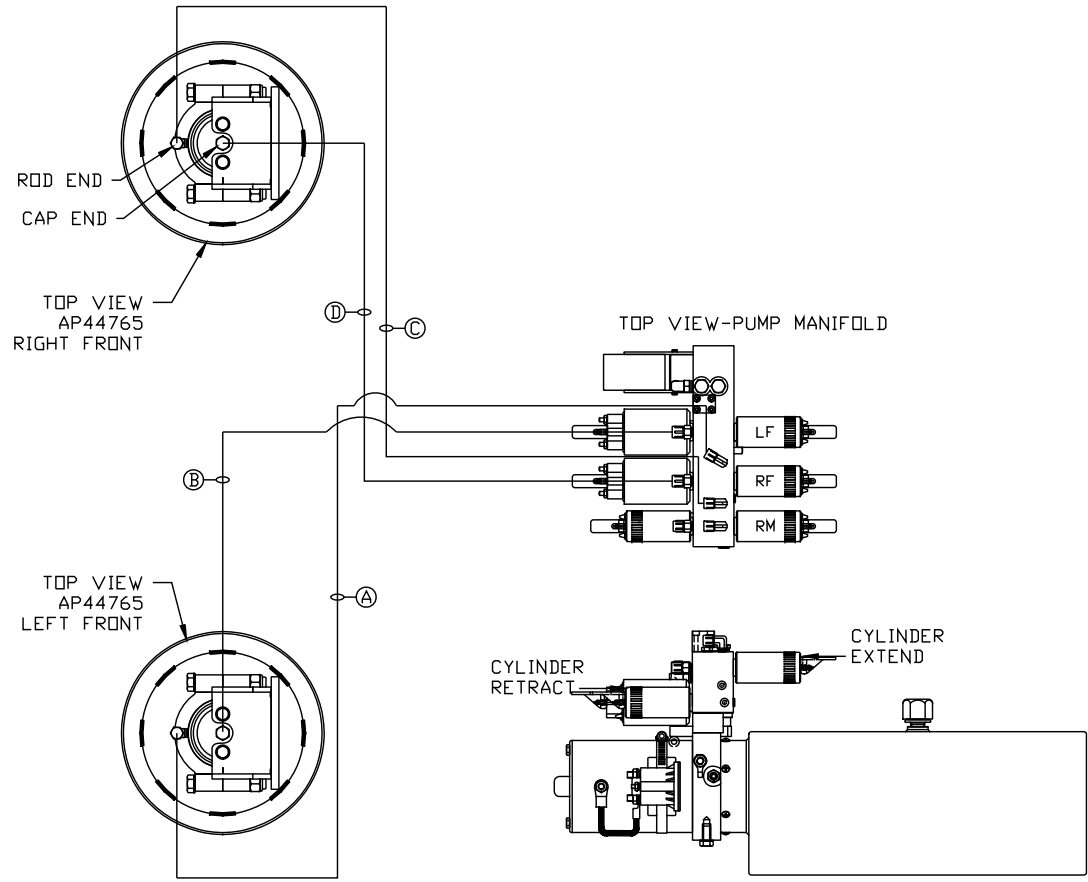


ORIENTATION
← FRONT



- Ⓐ AP4161 HOSE ASSY .25" x 120"
ROD END
- Ⓑ AP45250 HOSE ASSY .25/05 x 96"
CAP END
- Ⓒ AP4061 HOSE ASSY .25" x 216"
ROD END
- Ⓓ AP46310 HOSE ASSY .25/05 x 192"
CAP END

SIDE VIEW PUMP/MANIFOLD-AP52035
LOCATION AND ORIENTATION OF
PUMP/MANIFOLD ASSEMBLY WILL
DIFFER DEPENDING UPON O.E.M.

NOTE: INSTALLATION MUST CONFORM TO GOOD SHOP PRACTICES, SAE STANDARDS, RVIA STANDARDS, AND OTHER APPLICABLE STANDARDS.

CONTROL PACKAGE: AP51907

		HWH I-80 EXIT 267 SOUTH RT 1 MOSCOW, IOWA 52760	
		SCALE 1:6	DATE 09JUN14
		DRAWN BY .	
△	07MAY15	CORRECTED TYPO	
NO.	DATE	REVISION	
HYD CONN DIAGRAM			
THE INFORMATION DISCLOSED ON THIS DRAWING IS CONFIDENTIAL AND MUST NOT BE DISCLOSED OR USED IN ANY MANNER WHICH WILL BE DETRIMENTAL TO THE HWH CORPORATION			DRAWING NUMBER MP70686 A/B
RENEGADE/KIBBI			

*: PART OF THE ROOM
EXTENSION MECHANISM.

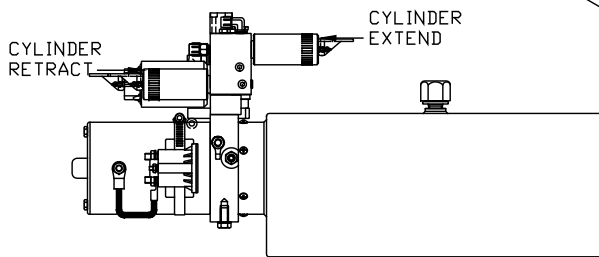
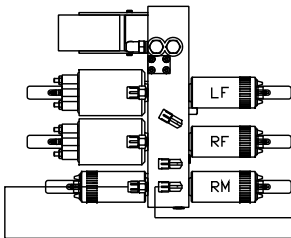
- Ⓐ AP6116 HOSE ASSY .25" x 240"
ROD END - ALWAYS PRESSURIZED
- Ⓑ AP6116 HOSE ASSY .25" x 240"
CAP END
- Ⓒ AP49417 HOSE ASSY 03 x 96"
ROD END - ALWAYS PRESSURIZED - MUST
MAINTAIN EQUAL LENGTH AND DIAMETER
- Ⓓ AP1412 HOSE ASSY .25" x 84"
CAP END - MUST MAINTAIN EQUAL LENGTH
AND DIAMETER

AP51913 HOSE KIT/1 ULD

NOTE: HOSES Ⓔ AND Ⓕ ARE INCLUDED
WITH THE ROOM EXTENSION MECHANISM.

- Ⓔ AP24818 HOSE ASSY HWH02HP x 86"
CAP END - MUST MAINTAIN EQUAL LENGTH
AND DIAMETER
- Ⓕ AP24632 HOSE ASSY HWH02HP x 48"
ROD END - ALWAYS PRESSURIZED - MUST
MAINTAIN EQUAL LENGTH AND DIAMETER
- Ⓖ AP46693 HOSE ASSY 03 x 48"
CAP END - MUST MAINTAIN EQUAL LENGTH
AND DIAMETER

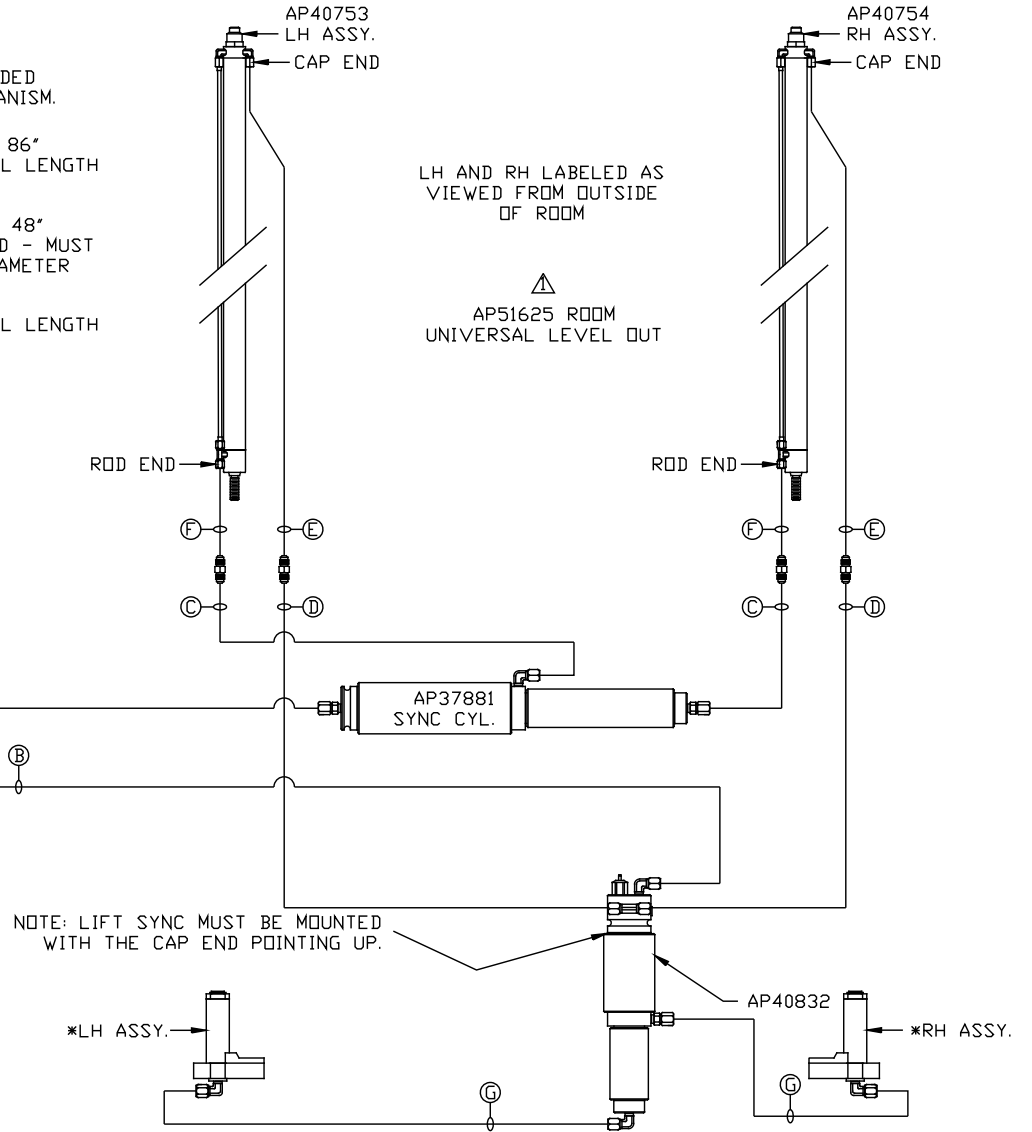
TOP VIEW-PUMP MANIFOLD



SIDE VIEW PUMP/MANIFOLD-AP52035

LOCATION AND ORIENTATION OF
PUMP/MANIFOLD ASSEMBLY WILL
DIFFER DEPENDING UPON O.E.M.

NOTE: INSTALLATION MUST CONFORM TO GOOD SHOP PRACTICES, SAE
STANDARDS, RVIA STANDARDS, AND OTHER APPLICABLE STANDARDS.



MP70686 B/B
07MAY15