

THIS PAGE INTENTIONALLY LEFT BLANK

			HWH I-80 EXIT 267 SOUTH RT 1 MOSCOW, IOWA 52760		
			SCALE 1:6	DATE 26NOV13	DRAWN BY .
			HYD CONN DIAGRAM		
NO.	DATE	REVISION			
THE INFORMATION DISCLOSED ON THIS DRAWING IS CONFIDENTIAL AND MUST NOT BE DISCLOSED OR USED IN ANY MANNER WHICH WILL BE DETRIMENTAL TO THE HWH CORPORATION			DRAWING NUMBER MP70711 A/C		

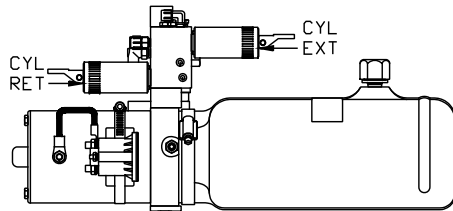
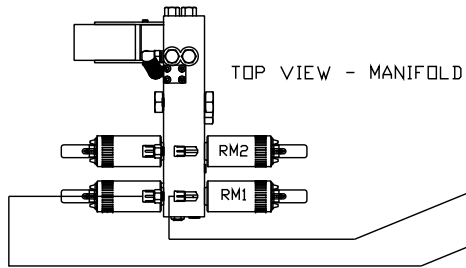
NOTE: INSTALLATION MUST CONFORM TO GOOD SHOP PRACTICES, SAE STANDARDS, RVIA STANDARDS, AND OTHER APPLICABLE STANDARDS.

CONTROL PACKAGE: AP52485

ITB

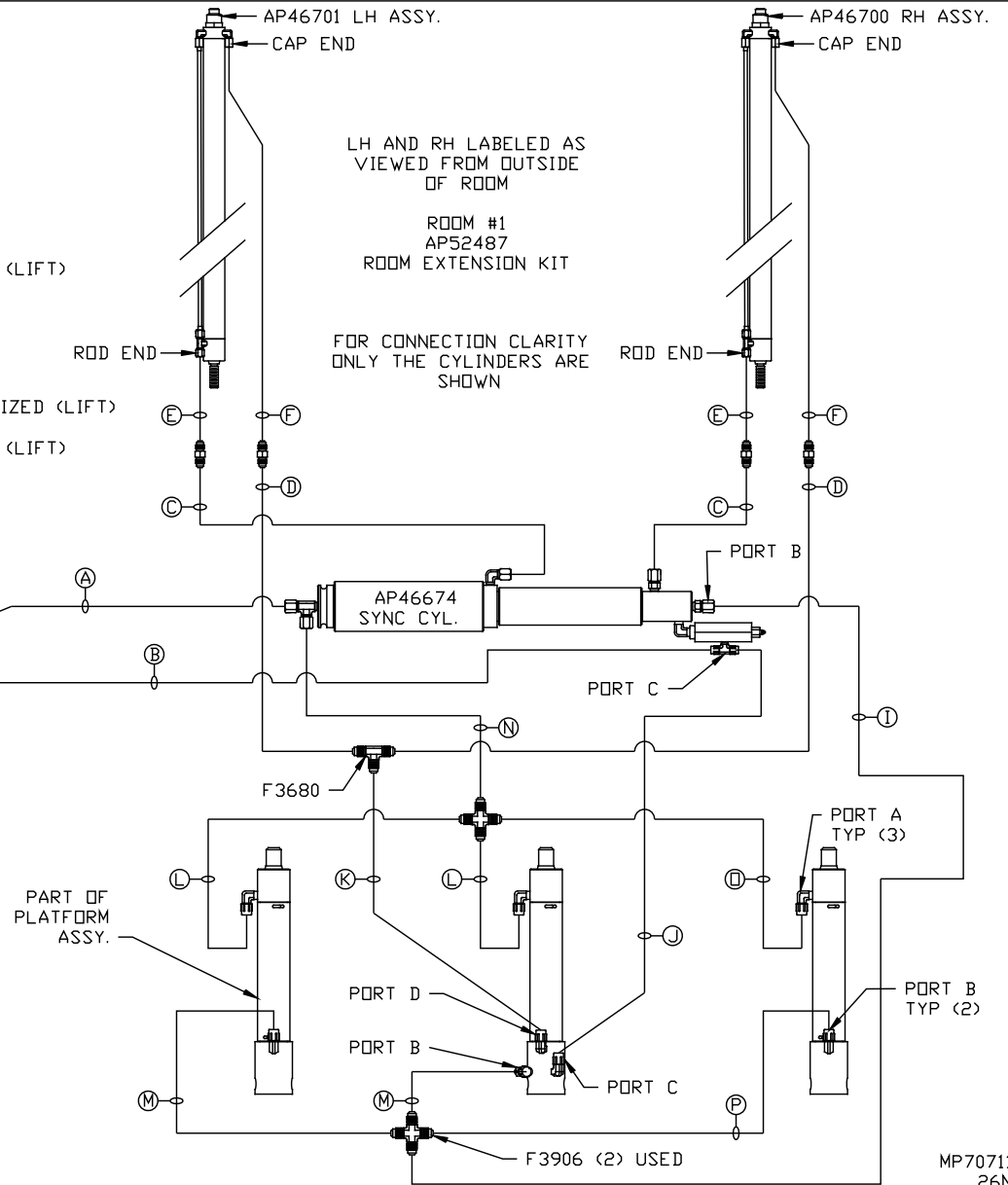
NOTE: HOSES (C) AND (F) ARE INCLUDED WITH THE ROOM EXTENSION MECHANISM

- |   |  |
|---|--|
| (A) .25" ID HOSE ASSY<br>ROD END - ALWAYS PRESSURIZED   | (I) .25" ID HOSE ASSY<br>CAP END (LIFT)                      |
| (B) .25" ID HOSE ASSY<br>CAP END (ROOM)   | (J) .25" ID HOSE ASSY<br>CAP END (ROOM)                      |
| (C) .03 HOSE ASSY<br>ROD END - ALWAYS PRESSURIZED<br>HOSES MUST MAINTAIN EQUAL<br>LENGTH AND DIAMETER                     | (K) .25" ID HOSE ASSY<br>CAP END (ROOM)                      |
| (D) .25" ID HOSE ASSY<br>CAP END - HOSES MUST MAINTAIN<br>EQUAL LENGTH AND DIAMETER                                       | (L) .25" ID HOSE ASSY ROD END (LIFT)<br>ALWAYS PRESSURIZED   |
| (E) AP24632 HOSE ASSY HWH02HP x 48"<br>ROD END - ALWAYS PRESSURIZED -<br>HOSES MUST MAINTAIN EQUAL<br>LENGTH AND DIAMETER | (M) .25" ID HOSE ASSY<br>CAP END (LIFT)                      |
| (F) AP24818 HOSE ASSY HWH02HP x 86"<br>CAP END - MUST MAINTAIN EQUAL<br>LENGTH AND DIAMETER                               | (N) .25" ID HOSE ASSY<br>ROD END - ALWAYS PRESSURIZED (LIFT) |
|   | (O) .25" ID HOSE ASSY ROD END (LIFT)<br>ALWAYS PRESSURIZED   |
|   | (P) .25" ID HOSE ASSY<br>CAP END LIFT                        |



LOCATION AND ORIENTATION OF PUMP/MANIFOLD ASSEMBLY WILL DIFFER DEPENDING UPON O.E.M.

NOTE: INSTALLATION MUST CONFORM TO GOOD SHOP PRACTICES, SAE STANDARDS, RVIA STANDARDS, AND OTHER APPLICABLE STANDARDS.

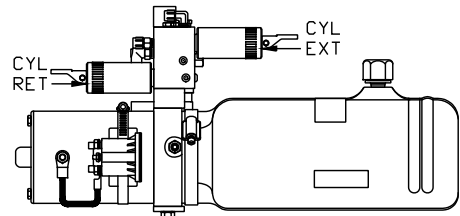
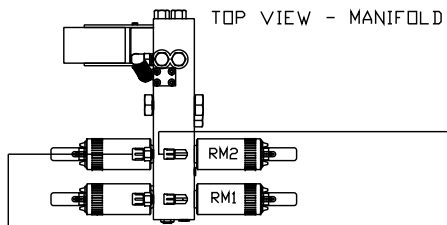


MP70711 B/C  
26NOV13

- Ⓐ .25" ID HOSE  
ROD END - ALWAYS PRESSURIZED
- Ⓑ .25" ID HOSE  
CAP END (ROOM)
- Ⓒ .25" ID HOSE  
ROD END - ALWAYS PRESSURIZED (LIFT)
- Ⓓ .25" ID HOSE  
CAP END (ROOM)
- Ⓔ .25" ID HOSE  
CAP END (LIFT)
- Ⓕ .25" ID HOSE  
CAP END (ROOM)

NOTE: HOSES Ⓡ AND Ⓢ ARE INCLUDED WITH THE ROOM EXTENSION MECHANISM

- Ⓡ .03 HOSE  
ROD END - ALWAYS PRESSURIZED - HOSES MUST MAINTAIN EQUAL LENGTH AND DIAMETER
- Ⓢ .25" ID HOSE  
CAP END - HOSES MUST MAINTAIN EQUAL LENGTH AND DIAMETER
- Ⓣ AP24632 HOSE ASSY HWH02HP x 48"  
ROD END - ALWAYS PRESSURIZED - HOSES MUST MAINTAIN EQUAL LENGTH AND DIAMETER
- Ⓤ AP24818 HOSE ASSY HWH02HP x 86"  
CAP END - MUST MAINTAIN EQUAL LENGTH AND DIAMETER
- Ⓚ .25" ID HOSE CAP END (LIFT)  
MUST MAINTAIN EQUAL LENGTH AND DIAMETER
- Ⓛ .25" ID HOSE ROD END (LIFT)  
ALWAYS PRESSURIZED - MUST MAINTAIN EQUAL LENGTH AND DIAMETER



SIDE VIEW PUMP/MANIFOLD-AP47802

LOCATION AND ORIENTATION OF PUMP/MANIFOLD ASSEMBLY WILL DIFFER DEPENDING UPON O.E.M.

NOTE: GENERIC VIEWS FOR CLARITY. CYLINDERS MAY BE REVERSED

NOTE: INSTALLATION MUST CONFORM TO GOOD SHOP PRACTICES, SAE STANDARDS, RVIA STANDARDS, AND OTHER APPLICABLE STANDARDS.

