

THIS PAGE INTENTIONALLY LEFT BLANK

NOTE: INSTALLATION MUST CONFORM TO GOOD SHOP PRACTICES, SAE STANDARDS, RVIA STANDARDS, AND OTHER APPLICABLE STANDARDS.

CONTROL PACKAGE: AP47742

			HWH I-80 EXIT 267 SOUTH RT 1 MOSCOW, IOWA 52760		
			SCALE 1:6	DATE 22NOV13	DRAWN BY .
			HYD CONN DIAGRAM		
NO.	DATE	REVISION	TRIVAN		DRAWING NUMBER
THE INFORMATION DISCLOSED ON THIS DRAWING IS CONFIDENTIAL AND MUST NOT BE DISCLOSED OR USED IN ANY MANNER WHICH WILL BE DETRIMENTAL TO THE HWH CORPORATION					MP70718 A/B

NOTE: HOSES (C) AND (F) ARE INCLUDED WITH THE ROOM EXTENSION MECHANISM

(A) .25" ID HOSE ASSY
ROD END - ALWAYS PRESSURIZED

(B) .25" ID HOSE ASSY
CAP END (ROOM)

(C) .03 HOSE ASSY
ROD END - ALWAYS PRESSURIZED
HOSES MUST MAINTAIN EQUAL LENGTH AND DIAMETER

(D) .25" ID HOSE ASSY
CAP END - HOSES MUST MAINTAIN EQUAL LENGTH AND DIAMETER

(E) AP24632 HOSE ASSY HWH02HP x 48"
ROD END - ALWAYS PRESSURIZED - HOSES MUST MAINTAIN EQUAL LENGTH AND DIAMETER

(F) AP24818 HOSE ASSY HWH02HP x 86"
CAP END - MUST MAINTAIN EQUAL LENGTH AND DIAMETER

(I) .25" ID HOSE ASSY
CAP END (LIFT)

(J) .25" ID HOSE ASSY
CAP END (ROOM)

(K) .25" ID HOSE ASSY
CAP END (ROOM)

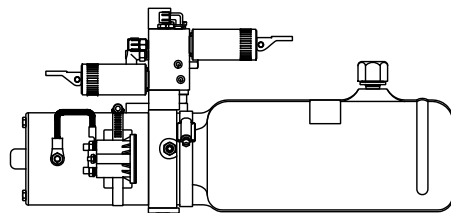
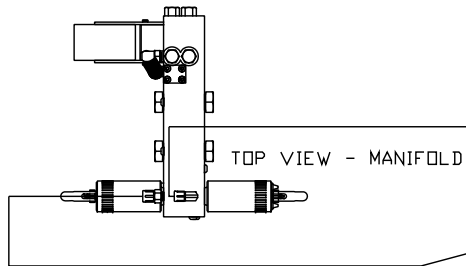
(L) .25" ID HOSE ASSY ROD END (LIFT)
ALWAYS PRESSURIZED

(M) .25" ID HOSE ASSY
CAP END (LIFT)

(N) .25" ID HOSE ASSY
ROD END - ALWAYS PRESSURIZED (LIFT)

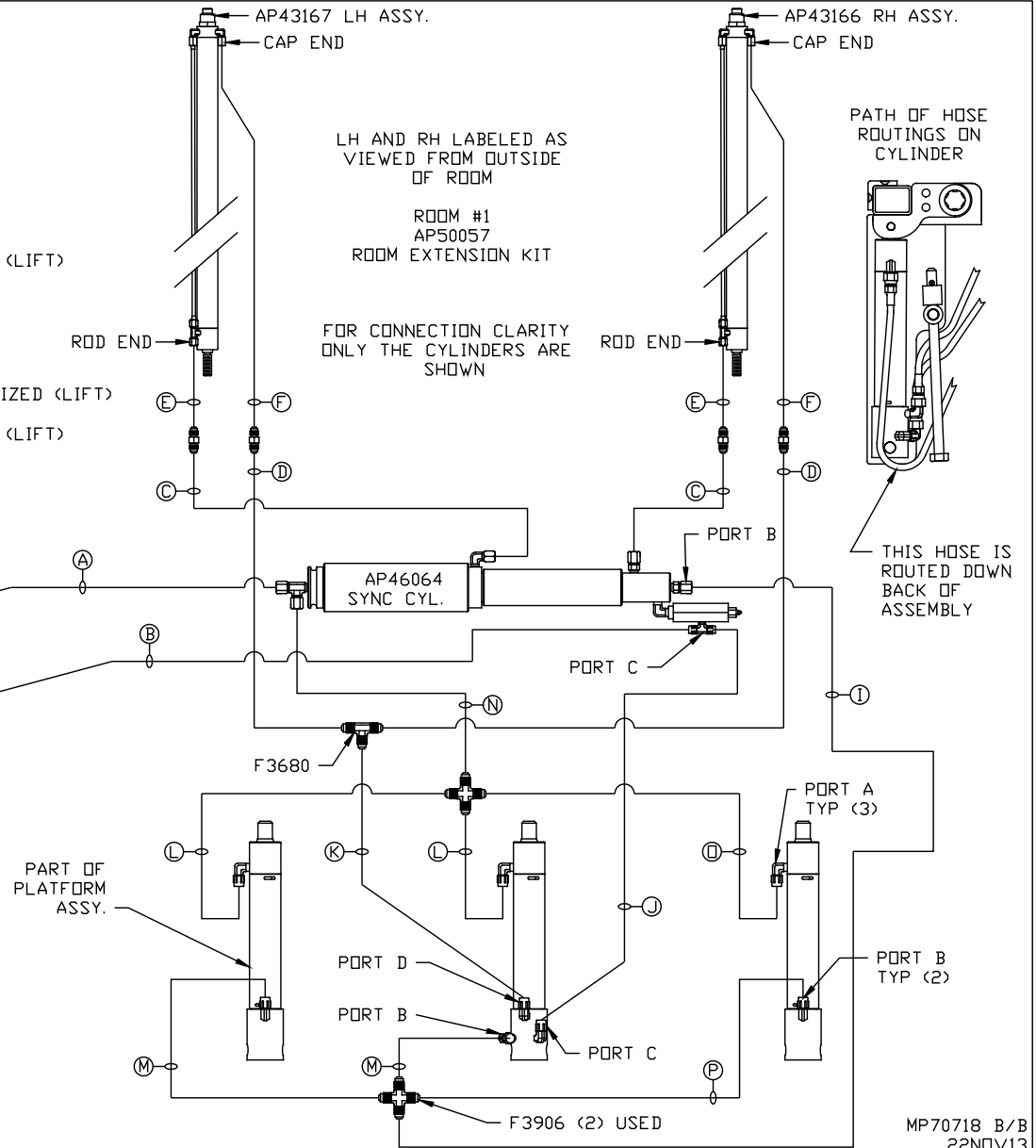
(O) .25" ID HOSE ASSY ROD END (LIFT)
ALWAYS PRESSURIZED

(P) .25" ID HOSE ASSY
CAP END LIFT



LOCATION AND ORIENTATION OF PUMP/MANIFOLD ASSEMBLY WILL DIFFER DEPENDING UPON O.E.M.

NOTE: INSTALLATION MUST CONFORM TO GOOD SHOP PRACTICES, SAE STANDARDS, RVIA STANDARDS, AND OTHER APPLICABLE STANDARDS.



MP70718 B/B
22NOV13