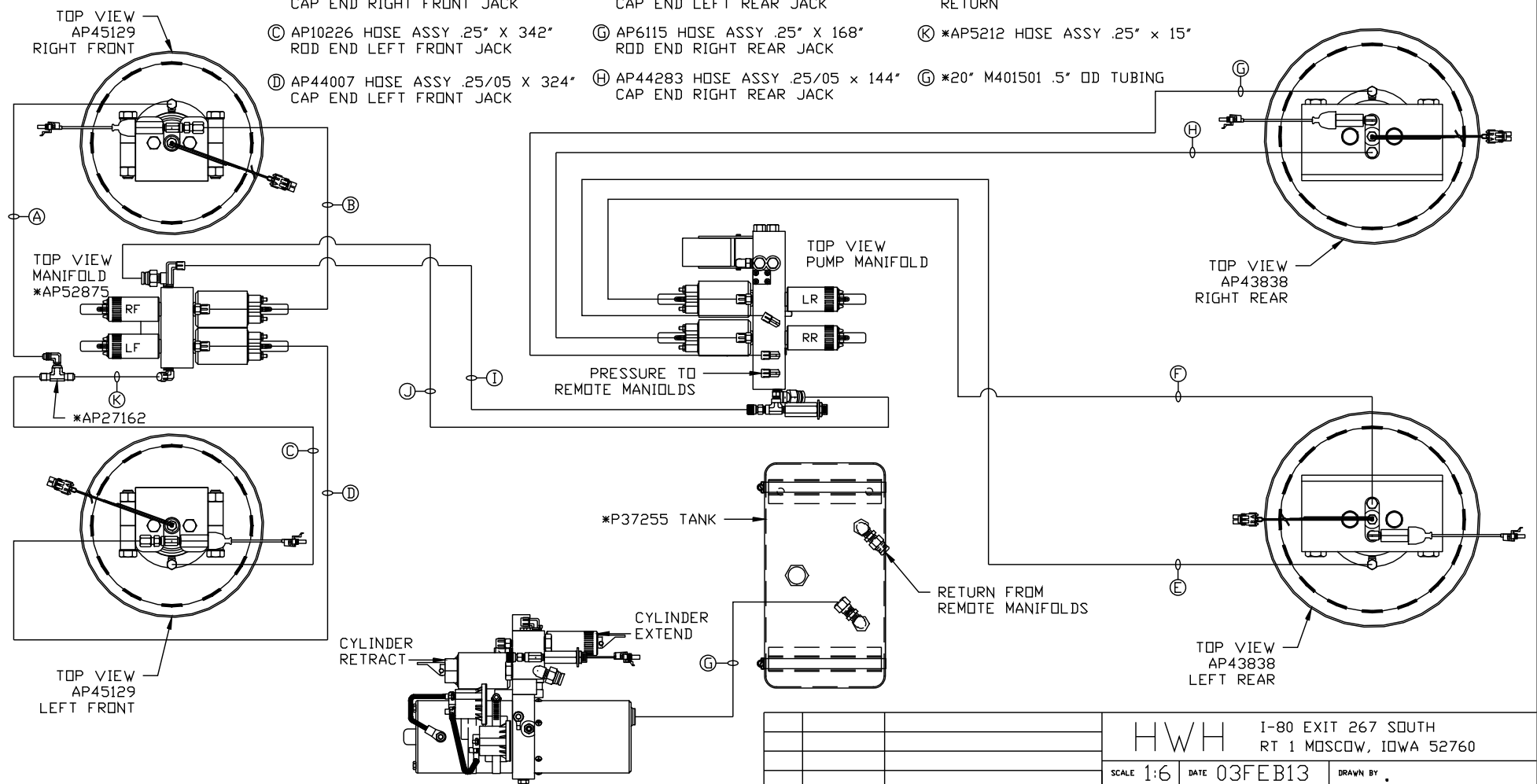


ORIENTATION  
← FRONT

- (A) AP6115 HOSE ASSY .25" X 168" ROD END RIGHT FRONT JACK
- (B) AP44283 HOSE ASSY .25/05 X 144" CAP END RIGHT FRONT JACK
- (C) AP10226 HOSE ASSY .25" X 342" ROD END LEFT FRONT JACK
- (D) AP44007 HOSE ASSY .25/05 X 324" CAP END LEFT FRONT JACK
- (E) AP10226 HOSE ASSY .25" X 342" ROD END LEFT REAR JACK
- (F) AP44007 HOSE ASSY .25/05 X 324" CAP END LEFT REAR JACK
- (G) AP6115 HOSE ASSY .25" X 168" ROD END RIGHT REAR JACK
- (H) AP44283 HOSE ASSY .25/05 X 144" CAP END RIGHT REAR JACK
- (I) \*AP4060 HOSE ASSY .25" X 24" PRESSURE
- (J) \*20" M401501 .5" OD TUBING RETURN
- (K) \*AP5212 HOSE ASSY .25" X 15"
- (L) \*20" M401501 .5" OD TUBING



SIDE VIEW OF PRIMARY PUMP/MANIFOLD-\*AP52881  
\*: PART OF AP52874 POWER/CONTROL

NOTE: INSTALLATION MUST CONFORM TO GOOD SHOP PRACTICES, SAE STANDARDS, RVIA STANDARDS, AND OTHER APPLICABLE STANDARDS.

LEVELING SYSTEM: AP52872

NO.	DATE	REVISION

THE INFORMATION DISCLOSED ON THIS DRAWING IS CONFIDENTIAL AND MUST NOT BE DISCLOSED OR USED IN ANY MANNER WHICH WILL BE DETRIMENTAL TO THE HWH CORPORATION

**HWH** I-80 EXIT 267 SOUTH  
RT 1 MOSCOW, IOWA 52760

SCALE 1:6 DATE 03FEB13 DRAWN BY .

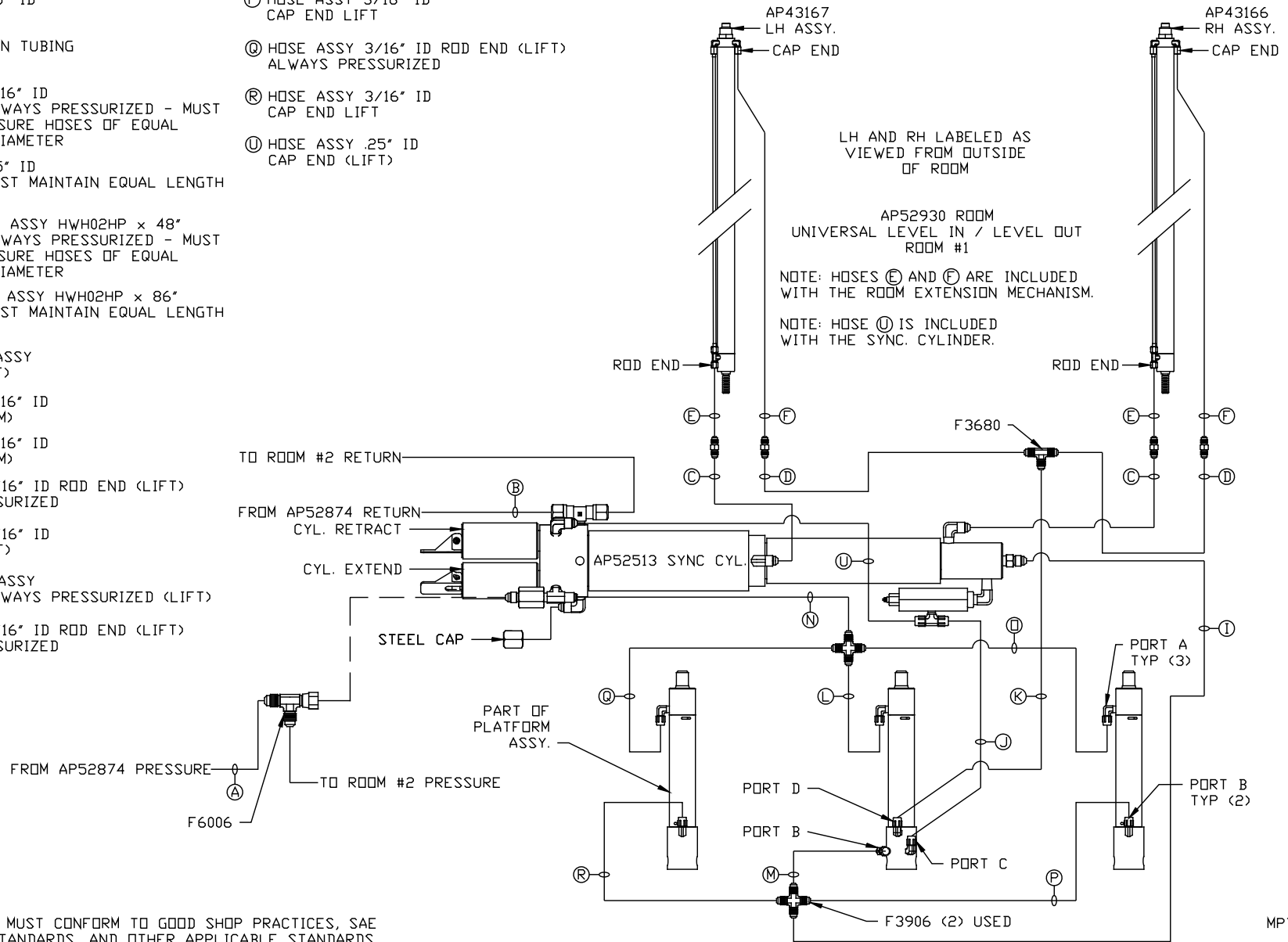
**HYD CONN DIAGRAM**

PIERCE MFG.

DRAWING NUMBER  
MP70751 A/D

- (A) HOSE ASSY .25" ID PRESSURE
- (B) .375" OD NYLON TUBING RETURN
- (C) HOSE ASSY 3/16" ID ROD END - ALWAYS PRESSURIZED - MUST BE HIGH PRESSURE HOSES OF EQUAL LENGTH AND DIAMETER
- (D) HOSE ASSY .25" ID CAP END - MUST MAINTAIN EQUAL LENGTH AND DIAMETER
- (E) AP24632 HOSE ASSY HWH02HP x 48" ROD END - ALWAYS PRESSURIZED - MUST BE HIGH PRESSURE HOSES OF EQUAL LENGTH AND DIAMETER
- (F) AP24818 HOSE ASSY HWH02HP x 86" CAP END - MUST MAINTAIN EQUAL LENGTH AND DIAMETER
- (I) .25" ID HOSE ASSY CAP END (LIFT)
- (J) HOSE ASSY 3/16" ID CAP END (ROOM)
- (K) HOSE ASSY 3/16" ID CAP END (ROOM)
- (L) HOSE ASSY 3/16" ID ROD END (LIFT) ALWAYS PRESSURIZED
- (M) HOSE ASSY 3/16" ID CAP END (LIFT)
- (N) .25" ID HOSE ASSY ROD END - ALWAYS PRESSURIZED (LIFT)
- (O) HOSE ASSY 3/16" ID ROD END (LIFT) ALWAYS PRESSURIZED

- (P) HOSE ASSY 3/16" ID CAP END LIFT
- (Q) HOSE ASSY 3/16" ID ROD END (LIFT) ALWAYS PRESSURIZED
- (R) HOSE ASSY 3/16" ID CAP END LIFT
- (U) HOSE ASSY .25" ID CAP END (LIFT)

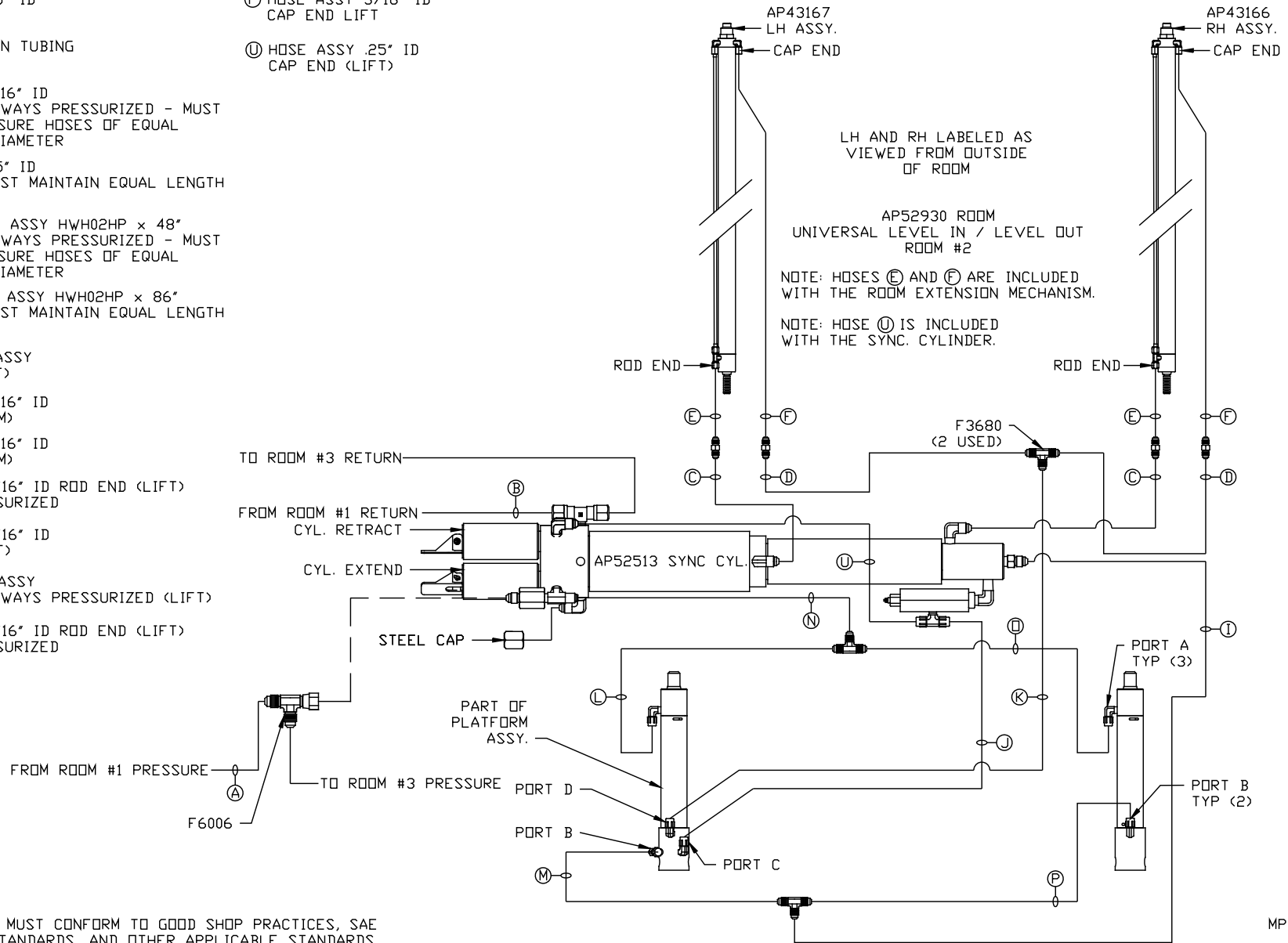


NOTE: INSTALLATION MUST CONFORM TO GOOD SHOP PRACTICES, SAE STANDARDS, RVIA STANDARDS, AND OTHER APPLICABLE STANDARDS.

MP70751 B/D  
03FEB13

- Ⓐ HOSE ASSY .25" ID PRESSURE
- Ⓑ .375" OD NYLON TUBING RETURN
- Ⓒ HOSE ASSY 3/16" ID ROD END - ALWAYS PRESSURIZED - MUST BE HIGH PRESSURE HOSES OF EQUAL LENGTH AND DIAMETER
- Ⓓ HOSE ASSY .25" ID CAP END - MUST MAINTAIN EQUAL LENGTH AND DIAMETER
- Ⓔ AP24632 HOSE ASSY HWH02HP x 48" ROD END - ALWAYS PRESSURIZED - MUST BE HIGH PRESSURE HOSES OF EQUAL LENGTH AND DIAMETER
- Ⓕ AP24818 HOSE ASSY HWH02HP x 86" CAP END - MUST MAINTAIN EQUAL LENGTH AND DIAMETER
- Ⓖ .25" ID HOSE ASSY CAP END (LIFT)
- Ⓙ HOSE ASSY 3/16" ID CAP END (ROOM)
- Ⓚ HOSE ASSY 3/16" ID CAP END (ROOM)
- Ⓛ HOSE ASSY 3/16" ID ROD END (LIFT) ALWAYS PRESSURIZED
- Ⓜ HOSE ASSY 3/16" ID CAP END (LIFT)
- Ⓝ .25" ID HOSE ASSY ROD END - ALWAYS PRESSURIZED (LIFT)
- Ⓟ HOSE ASSY 3/16" ID ROD END (LIFT) ALWAYS PRESSURIZED

- Ⓠ HOSE ASSY 3/16" ID CAP END LIFT
- Ⓡ HOSE ASSY .25" ID CAP END (LIFT)



NOTE: INSTALLATION MUST CONFORM TO GOOD SHOP PRACTICES, SAE STANDARDS, RVIA STANDARDS, AND OTHER APPLICABLE STANDARDS.

MP70751 C/D  
03FEB13

- Ⓐ HOSE ASSY .25" ID PRESSURE
- Ⓑ .375" OD NYLON TUBING RETURN
- Ⓒ HOSE ASSY 3/16" ID ROD END - ALWAYS PRESSURIZED - MUST BE HIGH PRESSURE HOSES OF EQUAL LENGTH AND DIAMETER
- Ⓓ HOSE ASSY .25" ID CAP END - MUST MAINTAIN EQUAL LENGTH AND DIAMETER
- Ⓔ AP24632 HOSE ASSY HWH02HP x 48" ROD END - ALWAYS PRESSURIZED - MUST BE HIGH PRESSURE HOSES OF EQUAL LENGTH AND DIAMETER
- Ⓕ AP24818 HOSE ASSY HWH02HP x 86" CAP END - MUST MAINTAIN EQUAL LENGTH AND DIAMETER
- Ⓖ .25" ID HOSE ASSY CAP END (LIFT)
- Ⓙ HOSE ASSY 3/16" ID CAP END (ROOM)
- Ⓚ HOSE ASSY 3/16" ID CAP END (ROOM)
- Ⓛ HOSE ASSY 3/16" ID ROD END (LIFT) ALWAYS PRESSURIZED
- Ⓜ HOSE ASSY 3/16" ID CAP END (LIFT)
- Ⓝ .25" ID HOSE ASSY ROD END - ALWAYS PRESSURIZED (LIFT)
- Ⓟ HOSE ASSY 3/16" ID ROD END (LIFT) ALWAYS PRESSURIZED

- Ⓠ HOSE ASSY 3/16" ID CAP END LIFT
- Ⓡ HOSE ASSY .25" ID CAP END (LIFT)



NOTE: INSTALLATION MUST CONFORM TO GOOD SHOP PRACTICES, SAE STANDARDS, RVIA STANDARDS, AND OTHER APPLICABLE STANDARDS.

MP70751 D/D  
03FEB13