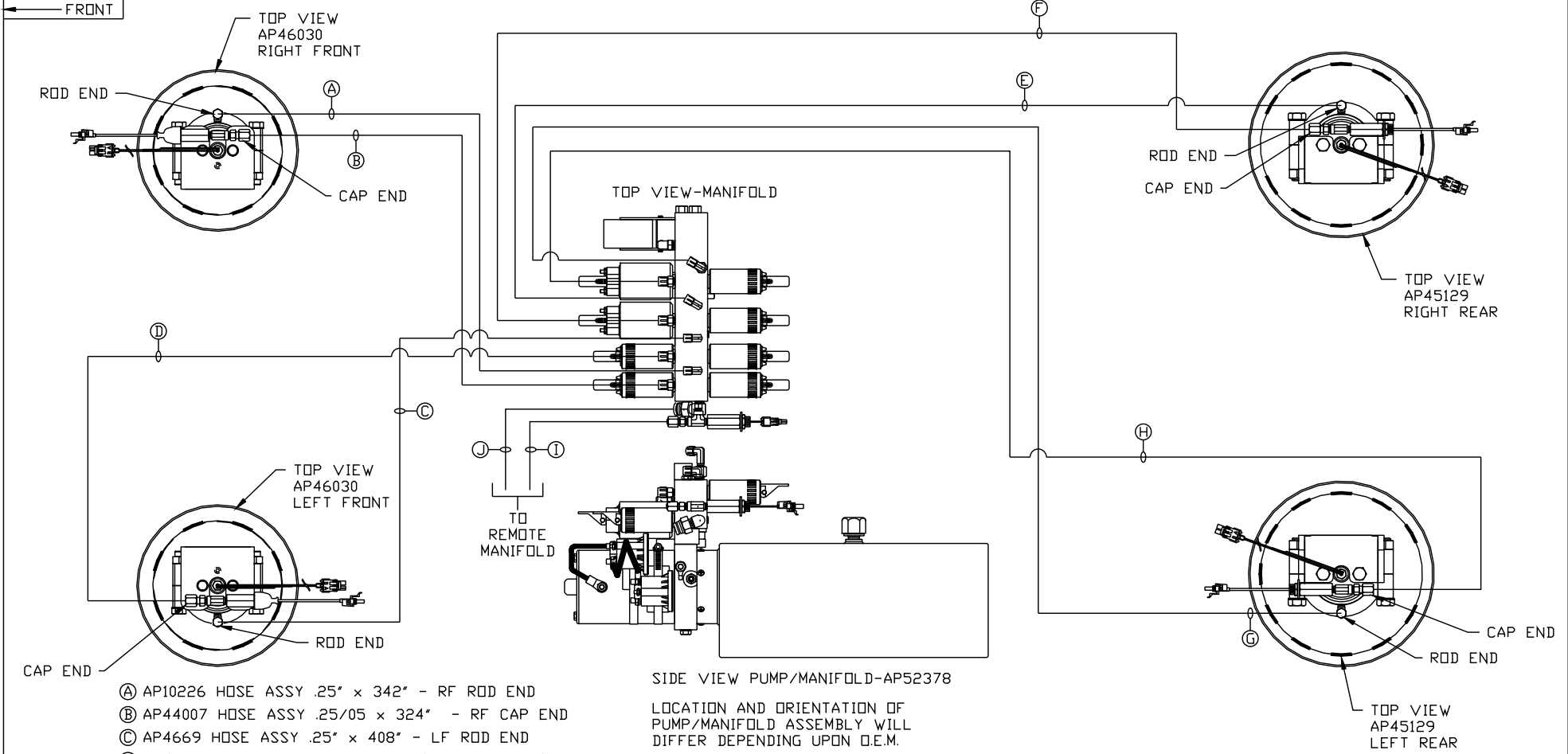


ORIENTATION
← FRONT



- Ⓐ AP10226 HOSE ASSY .25" x 342" - RF ROD END
- Ⓑ AP44007 HOSE ASSY .25/05 x 324" - RF CAP END
- Ⓒ AP4669 HOSE ASSY .25" x 408" - LF ROD END
- Ⓓ AP45372 HOSE ASSY .25/05 x 384" - LF CAP END
- Ⓔ AP1411 HOSE ASSY .25" x 124" - RR ROD END
- Ⓕ AP49420 HOSE ASSY .25/05 x 108" - RR CAP END
- Ⓖ AP27602 HOSE ASSY .25" x 186" - LR ROD END
- Ⓗ AP45367 HOSE ASSY .25/05 x 168" - LR CAP END
- Ⓢ AP4060 HOSE ASSY .25" x 24" - PRESSURE TO REMOTE MANIFOLD
- Ⓣ P6602 RETURN LINE .5" x 24" - RETURN FROM REMOTE MANIFOLD

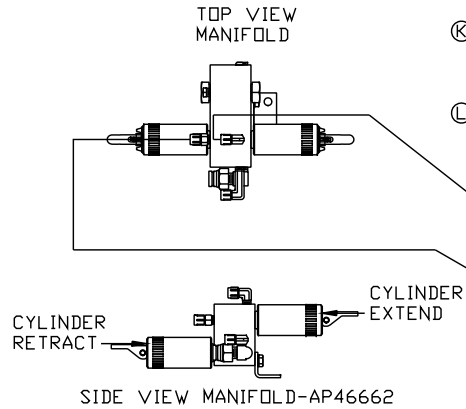
NOTE: INSTALLATION MUST CONFORM TO GOOD SHOP PRACTICES, SAE STANDARDS, RVIA STANDARDS, AND OTHER APPLICABLE STANDARDS.

LEVELING SYSTEM: AP53252

<p style="font-size: 24pt; margin: 0;">HWH</p> <p style="font-size: 10pt; margin: 0;">I-80 EXIT 267 SOUTH RT 1 MOSCOW, IOWA 52760</p>		<p>SCALE 1:6 DATE 28FEB14 DRAWN BY .</p>												
<p>HYD CONN DIAGRAM</p>														
<table border="1" style="width: 100%; border-collapse: collapse;"> <thead> <tr> <th style="width: 15%;">NO.</th> <th style="width: 15%;">DATE</th> <th style="width: 70%;">REVISION</th> </tr> </thead> <tbody> <tr> <td> </td> <td> </td> <td> </td> </tr> <tr> <td> </td> <td> </td> <td> </td> </tr> <tr> <td> </td> <td> </td> <td> </td> </tr> </tbody> </table>	NO.	DATE	REVISION										<p>FARBER</p>	<p>DRAWING NUMBER MP70764 A/B</p>
NO.	DATE	REVISION												
<p>THE INFORMATION DISCLOSED ON THIS DRAWING IS CONFIDENTIAL AND MUST NOT BE DISCLOSED OR USED IN ANY MANNER WHICH WILL BE DETRIMENTAL TO THE HWH CORPORATION</p>														

- Ⓐ .25" ID HOSE
ROD END - ALWAYS PRESSURIZED
- Ⓑ .25" ID HOSE
CAP END (ROOM)
- Ⓒ .25" ID HOSE
ROD END - ALWAYS PRESSURIZED (LIFT)
- Ⓓ .25" ID HOSE
CAP END (ROOM)
- Ⓔ .25" ID HOSE
CAP END (LIFT)
- Ⓕ .25" ID HOSE
CAP END (ROOM)

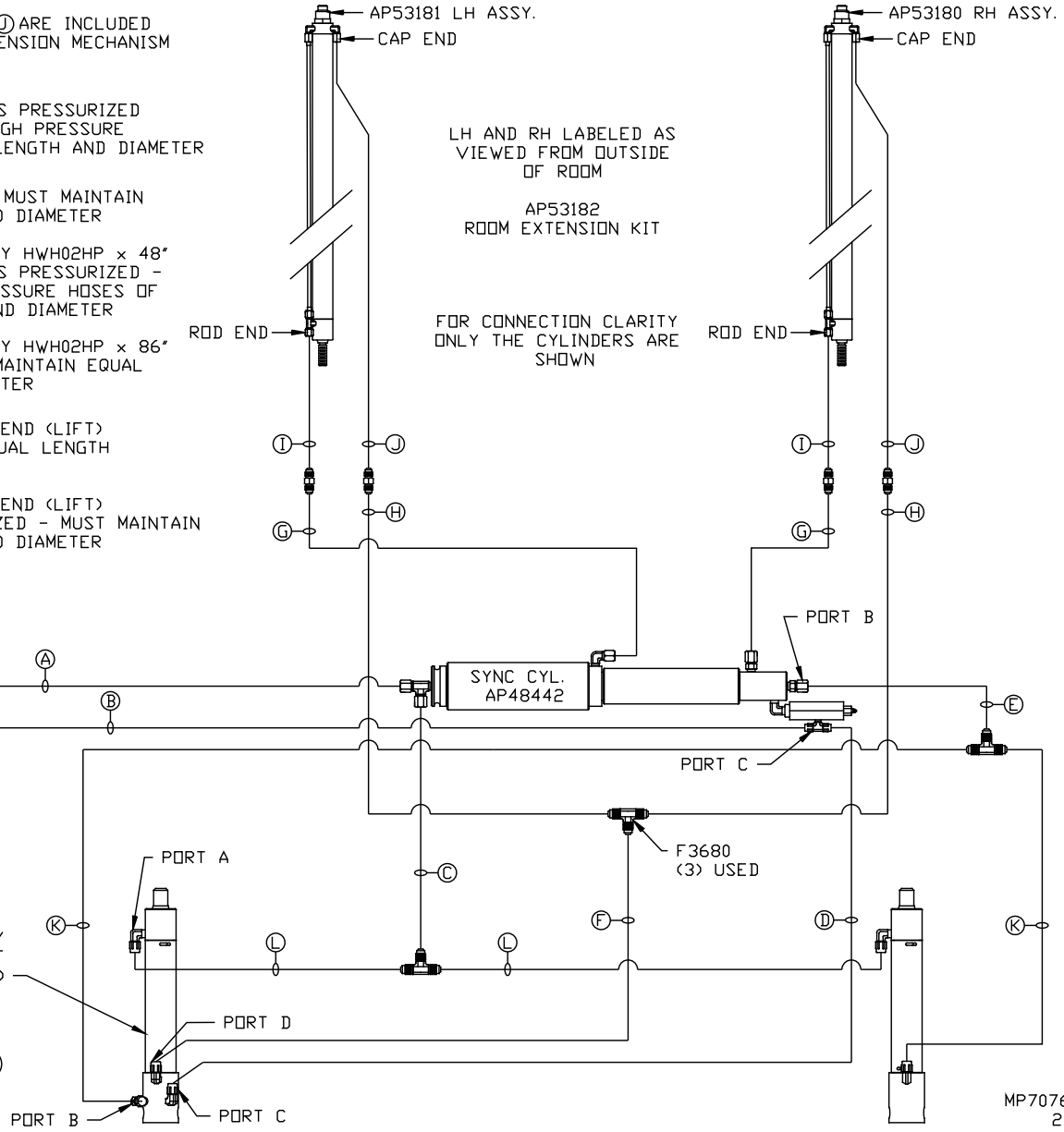
- NOTE: HOSES Ⓓ AND Ⓔ ARE INCLUDED WITH THE ROOM EXTENSION MECHANISM
- Ⓒ .188" ID HOSE
ROD END - ALWAYS PRESSURIZED
HOSES MUST BE HIGH PRESSURE
HOSES OF EQUAL LENGTH AND DIAMETER
 - Ⓗ .25" ID HOSE
CAP END - HOSES MUST MAINTAIN
EQUAL LENGTH AND DIAMETER
 - Ⓡ AP24632 HOSE ASSY HWH02HP x 48"
ROD END - ALWAYS PRESSURIZED -
MUST BE HIGH PRESSURE HOSES OF
EQUAL LENGTH AND DIAMETER
 - Ⓢ AP24818 HOSE ASSY HWH02HP x 86"
CAP END - MUST MAINTAIN EQUAL
LENGTH AND DIAMETER
 - Ⓚ .25" ID HOSE CAP END (LIFT)
MUST MAINTAIN EQUAL LENGTH
AND DIAMETER
 - Ⓛ .25" ID HOSE ROD END (LIFT)
ALWAYS PRESSURIZED - MUST MAINTAIN
EQUAL LENGTH AND DIAMETER



LOCATION AND ORIENTATION OF PUMP/MANIFOLD ASSEMBLY WILL DIFFER DEPENDING UPON O.E.M.

NOTE: GENERIC VIEWS FOR CLARITY. CYLINDERS MAY BE REVERSED

NOTE: INSTALLATION MUST CONFORM TO GOOD SHOP PRACTICES, SAE STANDARDS, RVIA STANDARDS, AND OTHER APPLICABLE STANDARDS.



MP70764 B/B
28FEB14