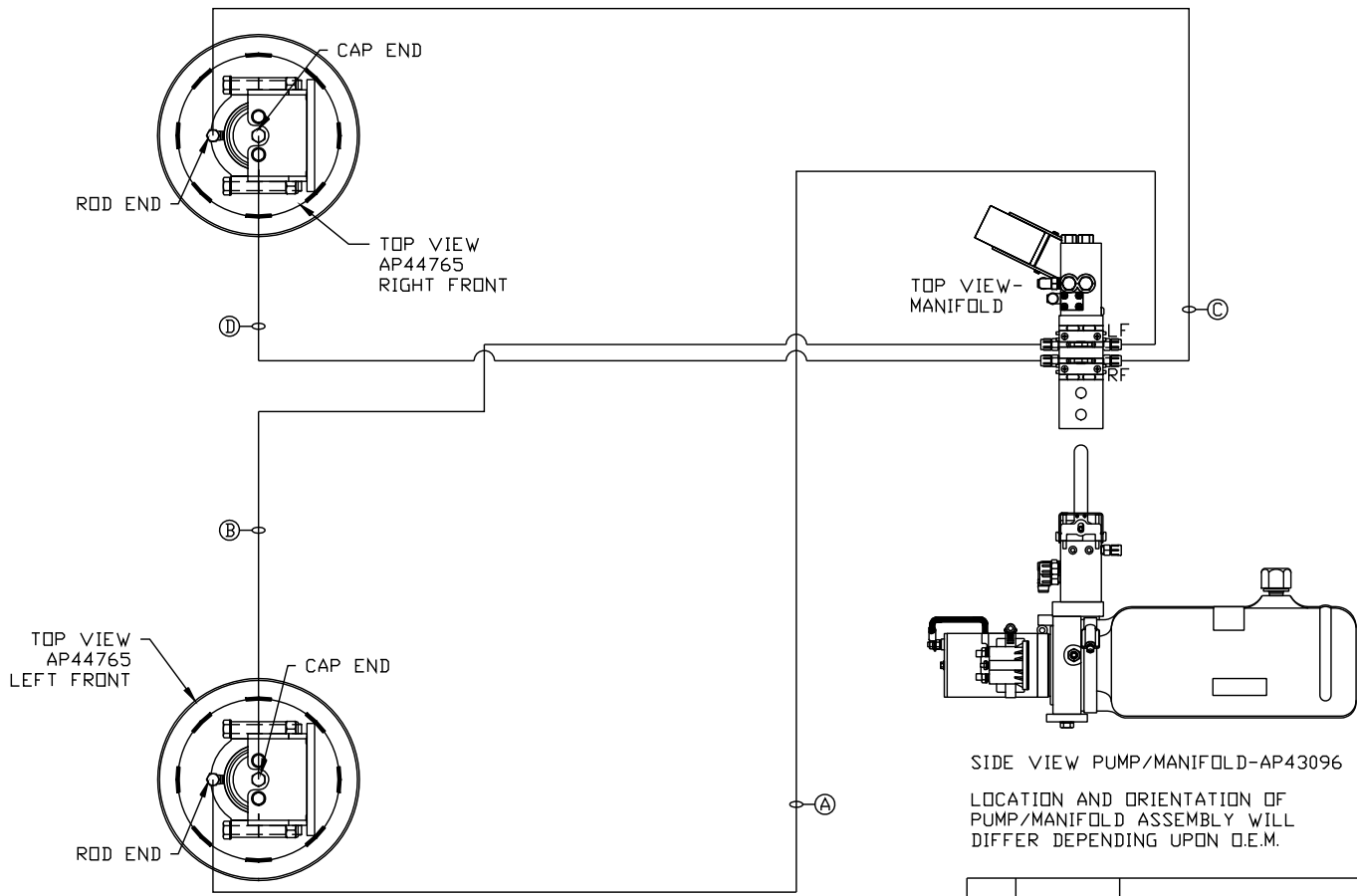


ORIENTATION
 ← FRONT



- Ⓐ AP4827 HOSE ASSY .25" x 144" LEFT JACK ROD END
- Ⓑ AP43250 HOSE ASSY .25/05 x 120" LEFT JACK CAP END
- Ⓒ AP1412 HOSE ASSY .25" x 84" RIGHT JACK ROD END
- Ⓓ AP43249 HOSE ASSY .25/05 x 60" RIGHT JACK CAP END

SIDE VIEW PUMP/MANIFOLD-AP43096

LOCATION AND ORIENTATION OF PUMP/MANIFOLD ASSEMBLY WILL DIFFER DEPENDING UPON O.E.M.

NOTE: INSTALLATION MUST CONFORM TO GOOD SHOP PRACTICES, SAE STANDARDS, RVIA STANDARDS, AND OTHER APPLICABLE STANDARDS.

FW SYSTEM: AP53379

		HWH I-80 EXIT 267 SOUTH RT 1 MOSCOW, IOWA 52760	
		SCALE 1:6	DATE 20MAY14
		DRAWN BY .	
		HYD CONN DIAGRAM	
NO.	DATE	REVISION	
		THE INFORMATION DISCLOSED ON THIS DRAWING IS CONFIDENTIAL AND MUST NOT BE DISCLOSED OR USED IN ANY MANNER WHICH WILL BE DETRIMENTAL TO THE HWH CORPORATION	
		GENERIC	DRAWING NUMBER MP70773