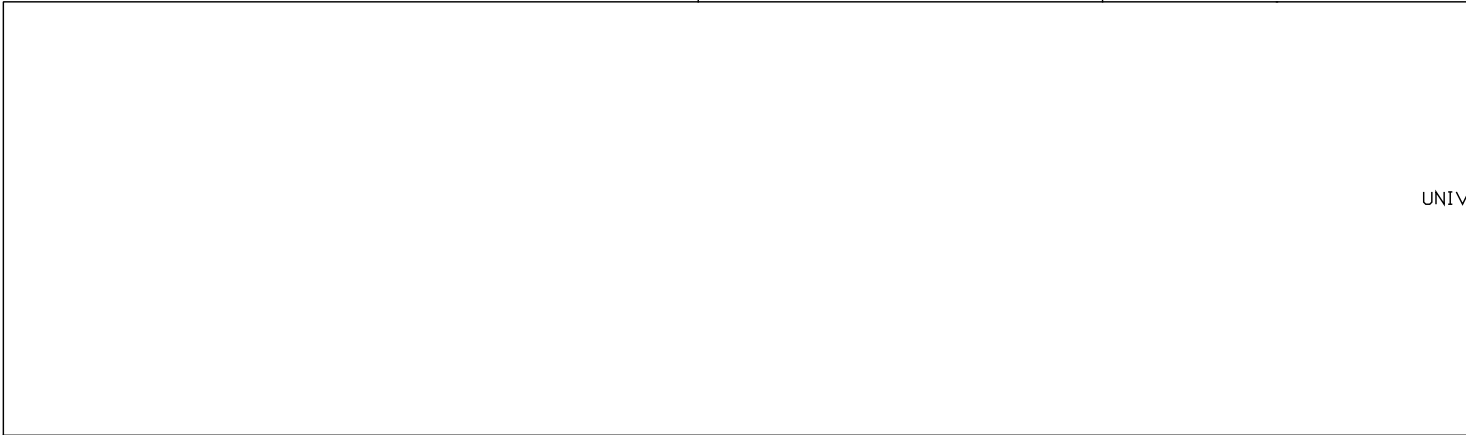


ORIENTATION
 ← FRONT

AP53476
 UNIVERSAL STRAIGHT OUT
 FUNCTION 2
 "B" ROOM



AP52930
 UNIVERSAL PLATFORM
 LEVEL OUT
 FUNCTION 1
 "B" ROOM

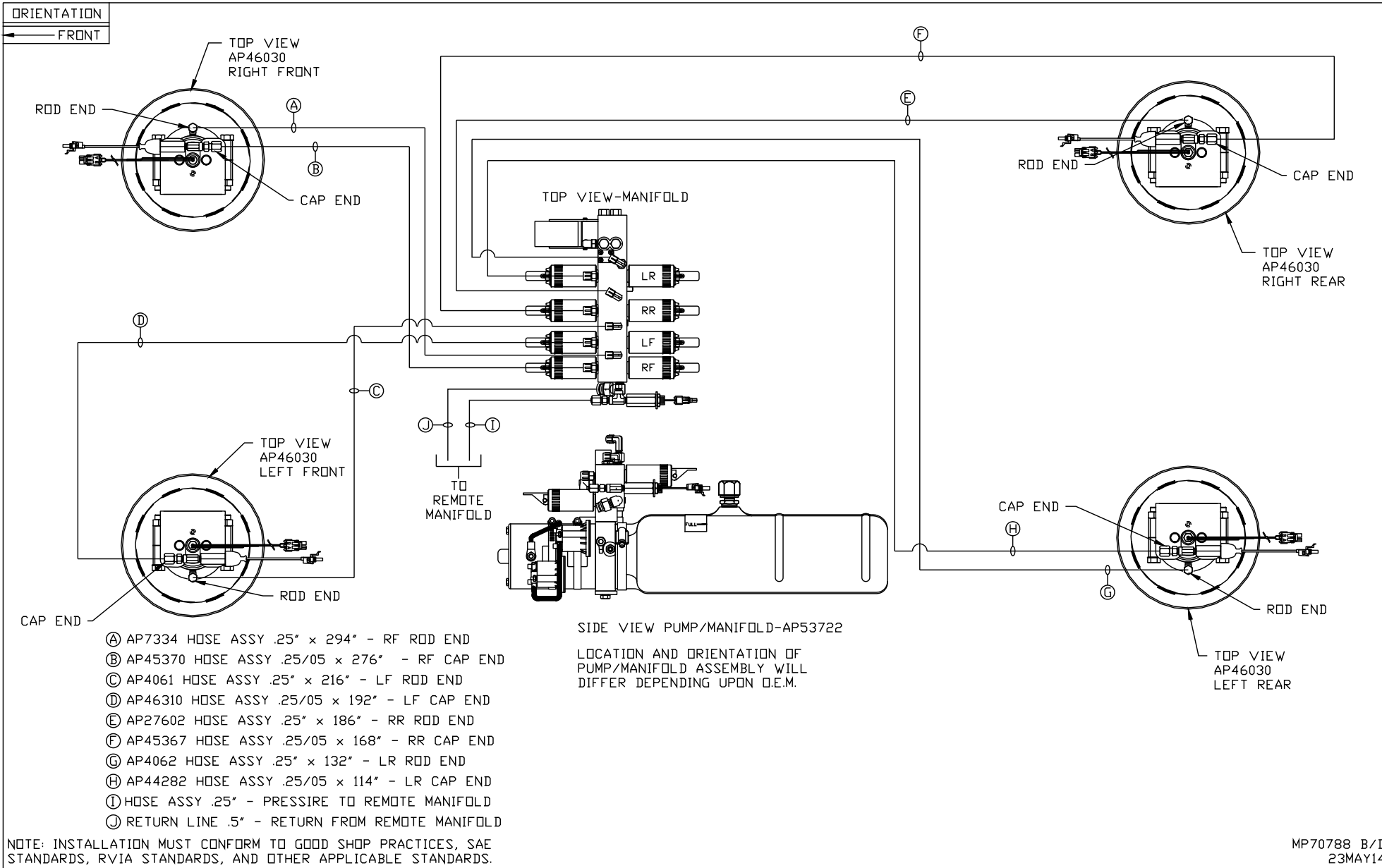
NOTE: INSTALLATION MUST CONFORM TO GOOD SHOP PRACTICES, SAE STANDARDS, RVIA STANDARDS, AND OTHER APPLICABLE STANDARDS.

LEVELING SYSTEM: AP53472

△	15FEB16	WAS AP52513
1	07MAY15	CORRECTED TYPDS
NO.	DATE	REVISION

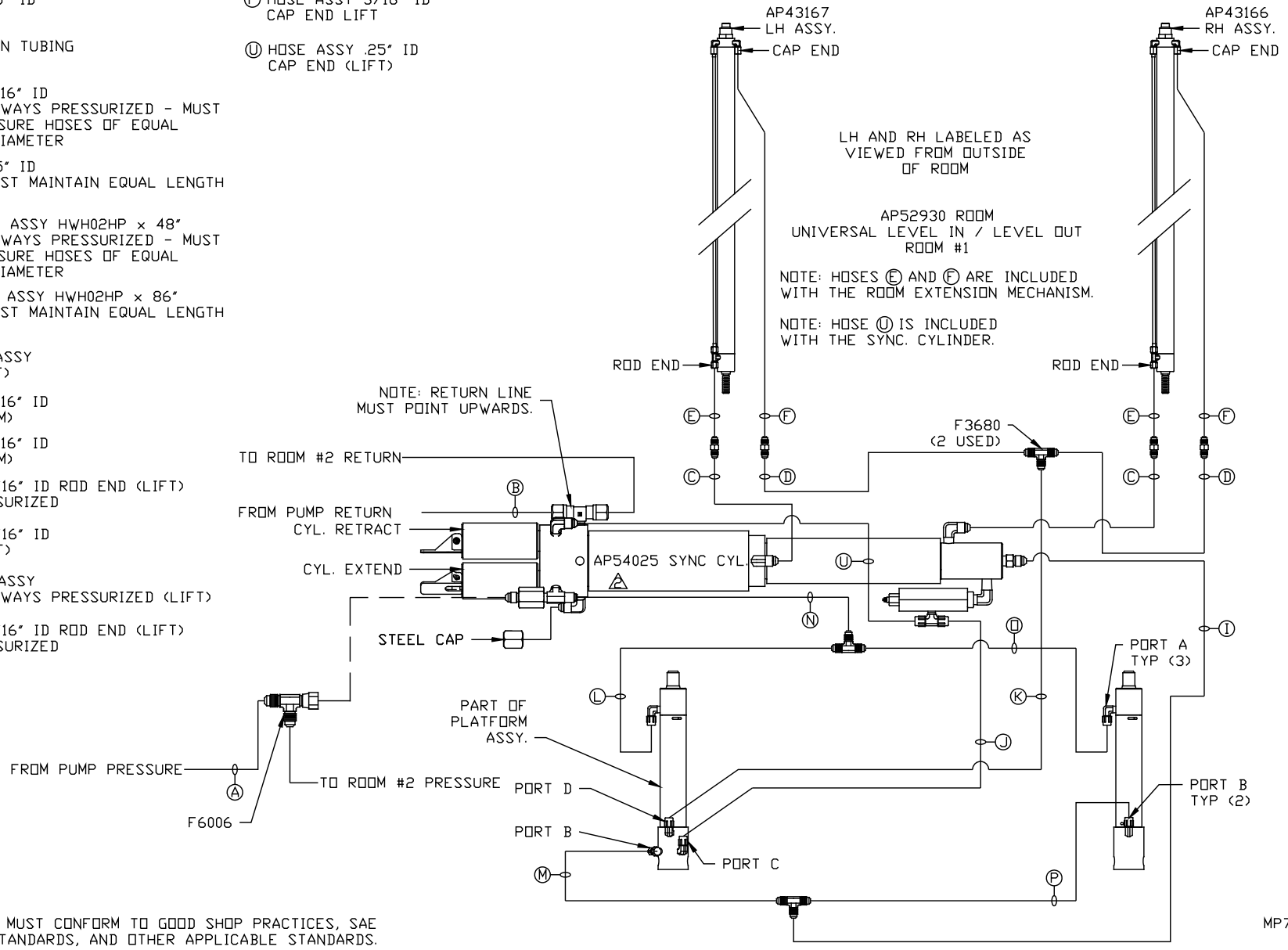
THE INFORMATION DISCLOSED ON THIS DRAWING IS CONFIDENTIAL AND MUST NOT BE DISCLOSED OR USED IN ANY MANNER WHICH WILL BE DETRIMENTAL TO THE HWH CORPORATION

HWH			I-80 EXIT 267 SOUTH RT 1 MOSCOW, IOWA 52760		
SCALE 1:6	DATE 23MAY14	DRAWN BY .			
HYD CONN DIAGRAM					
ITB				DRAWING NUMBER MP70788 A/D	



- Ⓐ HOSE ASSY .25" ID PRESSURE
- Ⓑ .375" OD NYLON TUBING RETURN
- Ⓒ HOSE ASSY 3/16" ID ROD END - ALWAYS PRESSURIZED - MUST BE HIGH PRESSURE HOSES OF EQUAL LENGTH AND DIAMETER
- Ⓓ HOSE ASSY .25" ID CAP END - MUST MAINTAIN EQUAL LENGTH AND DIAMETER
- Ⓔ AP24632 HOSE ASSY HWH02HP x 48" ROD END - ALWAYS PRESSURIZED - MUST BE HIGH PRESSURE HOSES OF EQUAL LENGTH AND DIAMETER
- Ⓕ AP24818 HOSE ASSY HWH02HP x 86" CAP END - MUST MAINTAIN EQUAL LENGTH AND DIAMETER
- Ⓖ .25" ID HOSE ASSY CAP END (LIFT)
- Ⓙ HOSE ASSY 3/16" ID CAP END (ROOM)
- Ⓚ HOSE ASSY 3/16" ID CAP END (ROOM)
- Ⓛ HOSE ASSY 3/16" ID ROD END (LIFT) ALWAYS PRESSURIZED
- Ⓜ HOSE ASSY 3/16" ID CAP END (LIFT)
- Ⓝ .25" ID HOSE ASSY ROD END - ALWAYS PRESSURIZED (LIFT)
- Ⓟ HOSE ASSY 3/16" ID ROD END (LIFT) ALWAYS PRESSURIZED

- Ⓟ HOSE ASSY 3/16" ID CAP END LIFT
- Ⓠ HOSE ASSY .25" ID CAP END (LIFT)



NOTE: INSTALLATION MUST CONFORM TO GOOD SHOP PRACTICES, SAE STANDARDS, RVIA STANDARDS, AND OTHER APPLICABLE STANDARDS.

MP70788 C/D
15FEB16

NOTE: HOSES (E) AND (F) ARE INCLUDED WITH THE ROOM EXTENSION MECHANISM

(A) HOSE ASSY .25 PRESSURE

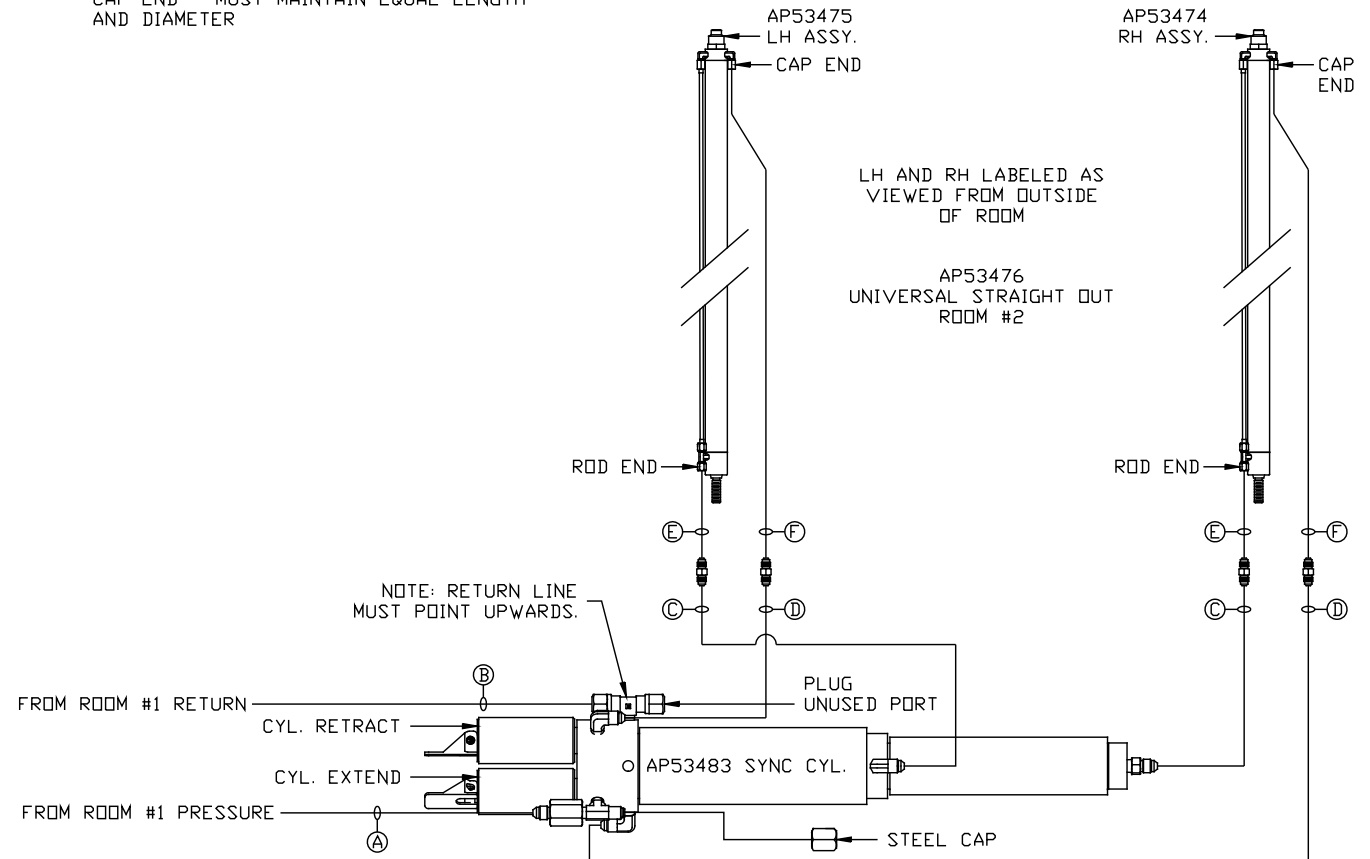
(B) .375" TUBING RETURN

(C) HOSE ASSY 03 ROD END - ALWAYS PRESSURIZED - MUST MAINTAIN EQUAL LENGTH AND DIAMETER

(D) HOSE ASSY .25" OR 03 CAP END - MUST MAINTAIN EQUAL LENGTH AND DIAMETER

(E) AP24632 HOSE ASSY HWH02HP x 48" ROD END - ALWAYS PRESSURIZED - MUST MAINTAIN EQUAL LENGTH AND DIAMETER

(F) AP24818 HOSE ASSY HWH02HP x 86" CAP END - MUST MAINTAIN EQUAL LENGTH AND DIAMETER



NOTE: INSTALLATION MUST CONFORM TO GOOD SHOP PRACTICES, SAE STANDARDS, RVIA STANDARDS, AND OTHER APPLICABLE STANDARDS.

MP70788 D/D
07MAY15