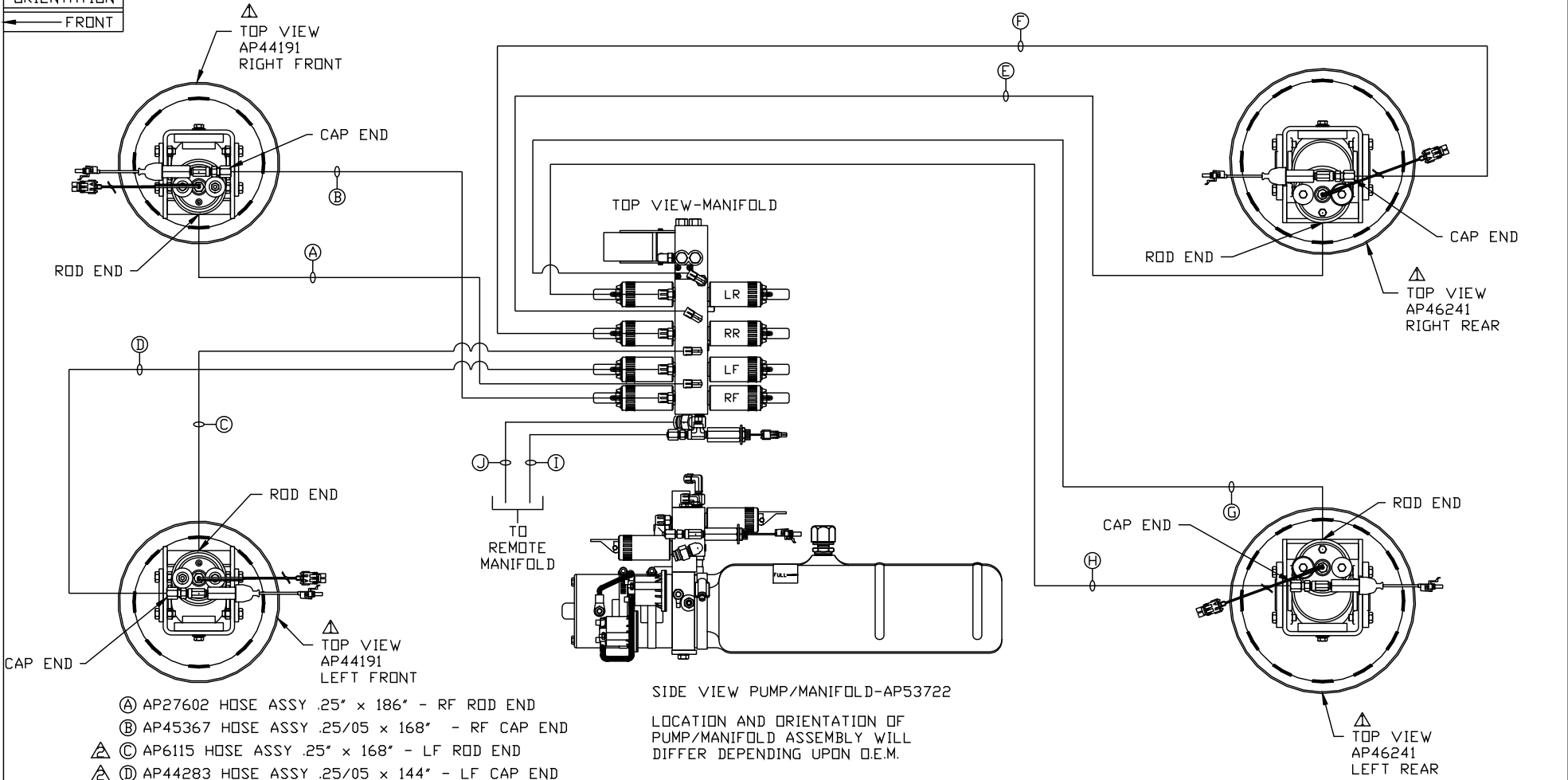


ORIENTATION
← FRONT



- Ⓐ AP27602 HOSE ASSY .25" x 186" - RF ROD END
- Ⓑ AP45367 HOSE ASSY .25/05 x 168" - RF CAP END
- Ⓒ AP6115 HOSE ASSY .25" x 168" - LF ROD END
- Ⓓ AP44283 HOSE ASSY .25/05 x 144" - LF CAP END
- Ⓔ AP7131 HOSE ASSY .25" x 496" - RR ROD END
- Ⓕ AP47474 HOSE ASSY .25/05 x 480" - RR CAP END
- Ⓖ AP6388 HOSE ASSY .25" x 462" - LR ROD END
- Ⓗ AP49418 HOSE ASSY .25/05 x 444" - LR CAP END
- Ⓛ HOSE ASSY .25" - PRESSURE TO REMOTE MANIFOLD
- Ⓜ RETURN LINE .5" - RETURN FROM REMOTE MANIFOLD

NOTE: INSTALLATION MUST CONFORM TO GOOD SHOP PRACTICES, SAE STANDARDS, RVIA STANDARDS, AND OTHER APPLICABLE STANDARDS.

LEVELING SYSTEM: AP53573

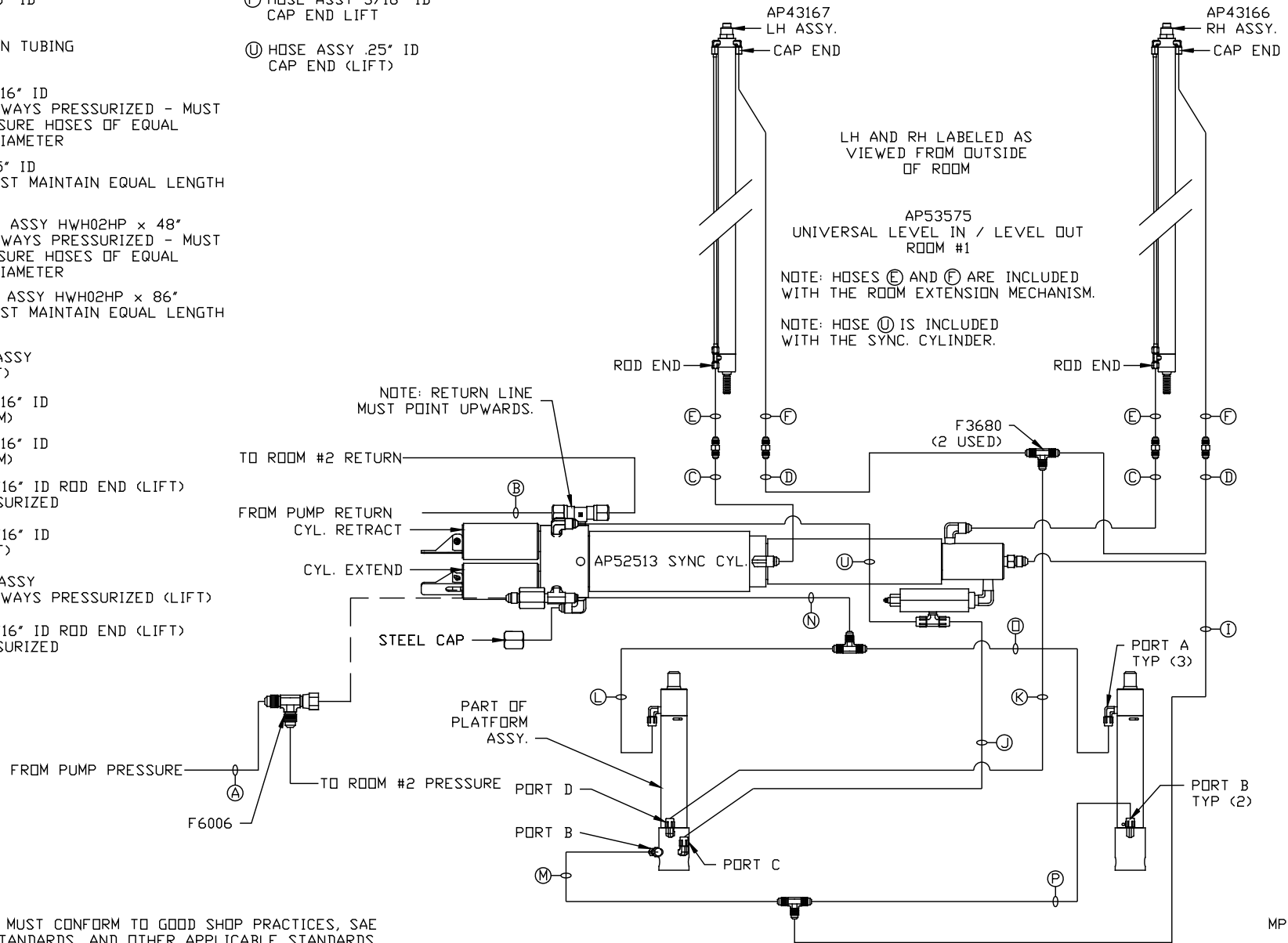
Ⓐ	22FEB16	SWAPPED HOSES
Ⓒ	07MAY15	WAS AP46030,AP45129
NO.	DATE	REVISION

THE INFORMATION DISCLOSED ON THIS DRAWING IS CONFIDENTIAL AND MUST NOT BE DISCLOSED OR USED IN ANY MANNER WHICH WILL BE DETRIMENTAL TO THE HWH CORPORATION

HWH		I-80 EXIT 267 SOUTH RT 1 MOSCOW, IOWA 52760	
SCALE 1:6	DATE 03JUN14	DRAWN BY .	
HYD CONN DIAGRAM			
FARBER			DRAWING NUMBER MP70791 A/C

- Ⓐ HOSE ASSY .25" ID PRESSURE
- Ⓑ .375" OD NYLON TUBING RETURN
- Ⓒ HOSE ASSY 3/16" ID ROD END - ALWAYS PRESSURIZED - MUST BE HIGH PRESSURE HOSES OF EQUAL LENGTH AND DIAMETER
- Ⓓ HOSE ASSY .25" ID CAP END - MUST MAINTAIN EQUAL LENGTH AND DIAMETER
- Ⓔ AP24632 HOSE ASSY HWH02HP x 48" ROD END - ALWAYS PRESSURIZED - MUST BE HIGH PRESSURE HOSES OF EQUAL LENGTH AND DIAMETER
- Ⓕ AP24818 HOSE ASSY HWH02HP x 86" CAP END - MUST MAINTAIN EQUAL LENGTH AND DIAMETER
- Ⓖ .25" ID HOSE ASSY CAP END (LIFT)
- Ⓙ HOSE ASSY 3/16" ID CAP END (ROOM)
- Ⓚ HOSE ASSY 3/16" ID CAP END (ROOM)
- Ⓛ HOSE ASSY 3/16" ID ROD END (LIFT) ALWAYS PRESSURIZED
- Ⓜ HOSE ASSY 3/16" ID CAP END (LIFT)
- Ⓝ .25" ID HOSE ASSY ROD END - ALWAYS PRESSURIZED (LIFT)
- Ⓟ HOSE ASSY 3/16" ID ROD END (LIFT) ALWAYS PRESSURIZED

- Ⓠ HOSE ASSY 3/16" ID CAP END LIFT
- Ⓡ HOSE ASSY .25" ID CAP END (LIFT)

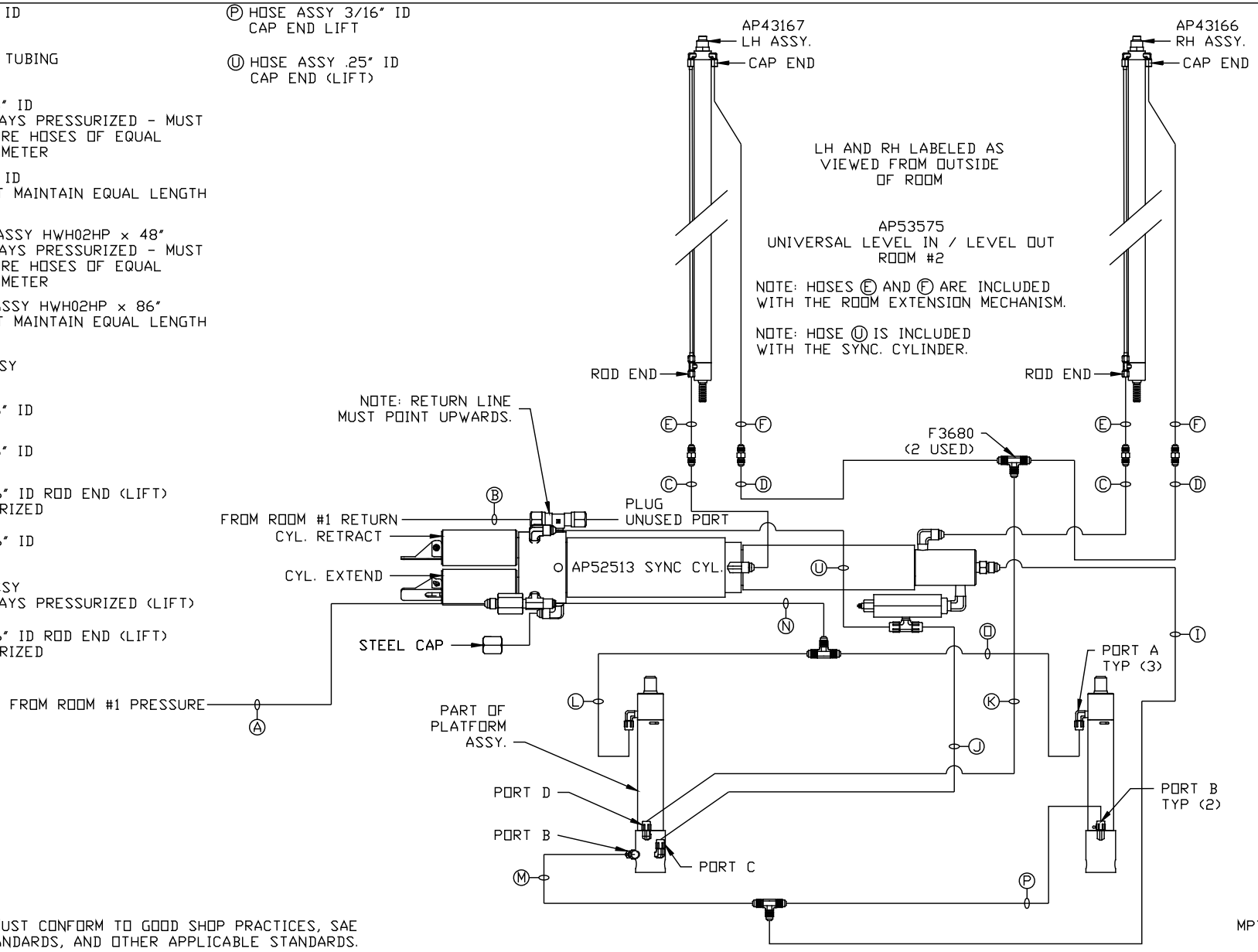


NOTE: INSTALLATION MUST CONFORM TO GOOD SHOP PRACTICES, SAE STANDARDS, RVIA STANDARDS, AND OTHER APPLICABLE STANDARDS.

MP70791 B/C
03JUN14

- Ⓐ HOSE ASSY .25" ID PRESSURE
- Ⓑ .375" OD NYLON TUBING RETURN
- Ⓒ HOSE ASSY 3/16" ID ROD END - ALWAYS PRESSURIZED - MUST BE HIGH PRESSURE HOSES OF EQUAL LENGTH AND DIAMETER
- Ⓓ HOSE ASSY .25" ID CAP END - MUST MAINTAIN EQUAL LENGTH AND DIAMETER
- Ⓔ AP24632 HOSE ASSY HWH02HP x 48" ROD END - ALWAYS PRESSURIZED - MUST BE HIGH PRESSURE HOSES OF EQUAL LENGTH AND DIAMETER
- Ⓕ AP24818 HOSE ASSY HWH02HP x 86" CAP END - MUST MAINTAIN EQUAL LENGTH AND DIAMETER
- Ⓖ .25" ID HOSE ASSY CAP END (LIFT)
- Ⓙ HOSE ASSY 3/16" ID CAP END (ROOM)
- Ⓚ HOSE ASSY 3/16" ID CAP END (ROOM)
- Ⓛ HOSE ASSY 3/16" ID ROD END (LIFT) ALWAYS PRESSURIZED
- Ⓜ HOSE ASSY 3/16" ID CAP END (LIFT)
- Ⓝ .25" ID HOSE ASSY ROD END - ALWAYS PRESSURIZED (LIFT)
- Ⓟ HOSE ASSY 3/16" ID ROD END (LIFT) ALWAYS PRESSURIZED

- Ⓠ HOSE ASSY 3/16" ID CAP END LIFT
- Ⓡ HOSE ASSY .25" ID CAP END (LIFT)



NOTE: INSTALLATION MUST CONFORM TO GOOD SHOP PRACTICES, SAE STANDARDS, RVIA STANDARDS, AND OTHER APPLICABLE STANDARDS.

MP70791 C/C
07MAY15