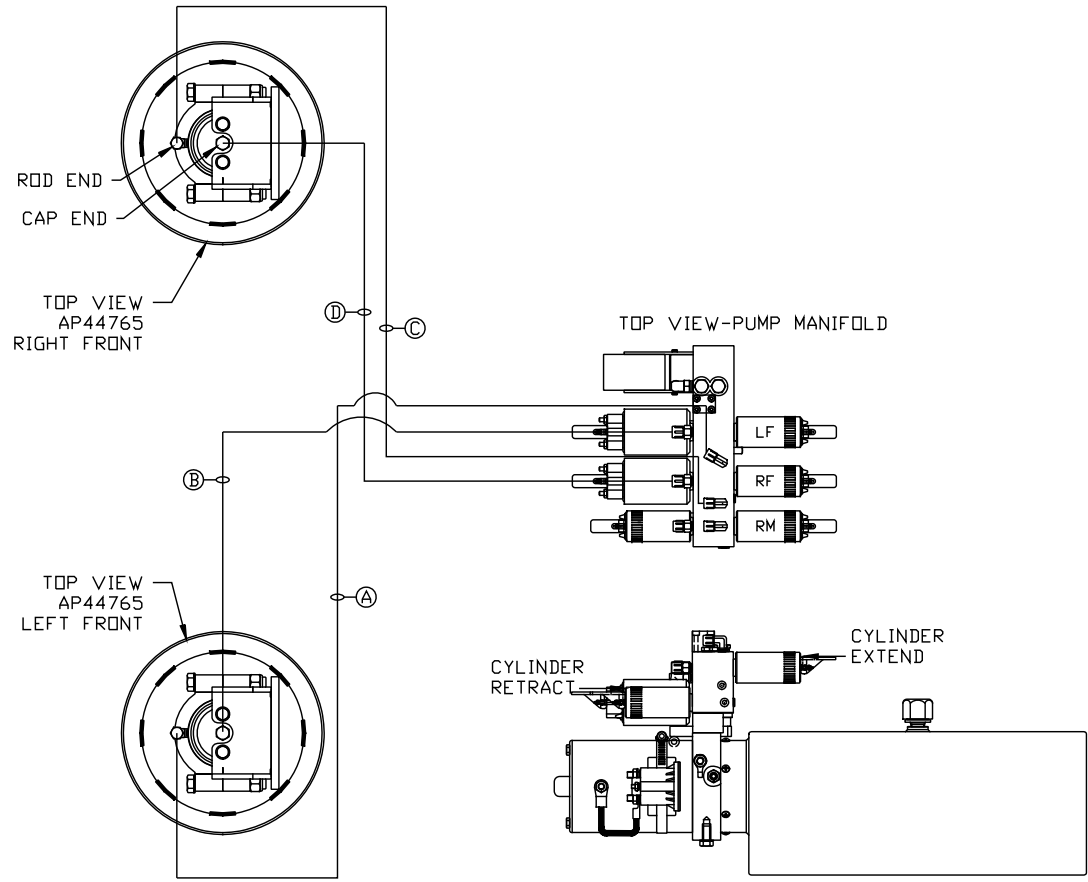


ORIENTATION
← FRONT



- Ⓐ AP5352 HOSE ASSY .25" x 96" ROD END
- Ⓑ AP43306 HOSE ASSY .25/05 x 72" CAP END
- Ⓒ AP10913 HOSE ASSY .25" x 161" ROD END
- Ⓓ AP44283 HOSE ASSY .25/05 x 144" CAP END

SIDE VIEW PUMP/MANIFOLD-AP52035
 LOCATION AND ORIENTATION OF PUMP/MANIFOLD ASSEMBLY WILL DIFFER DEPENDING UPON O.E.M.

NOTE: INSTALLATION MUST CONFORM TO GOOD SHOP PRACTICES, SAE STANDARDS, RVIA STANDARDS, AND OTHER APPLICABLE STANDARDS.

CONTROL PACKAGE: AP53700

| | | | |
|--|---------|--|-------------------------------|
| | | HWH I-80 EXIT 267 SOUTH RT 1 MOSCOW, IOWA 52760 | |
| | | SCALE 1:6 | DATE 09JUN14 |
| | | DRAWN BY . | |
| △ | 07MAY15 | CORRECTED TYPO | |
| NO. | DATE | REVISION | |
| HYD CONN DIAGRAM | | | |
| THE INFORMATION DISCLOSED ON THIS DRAWING IS CONFIDENTIAL AND MUST NOT BE DISCLOSED OR USED IN ANY MANNER WHICH WILL BE DETRIMENTAL TO THE HWH CORPORATION | | | DRAWING NUMBER MP70792 A/B |
| RENEGADE/KIBBI | | | |

*: PART OF THE ROOM
EXTENSION MECHANISM.

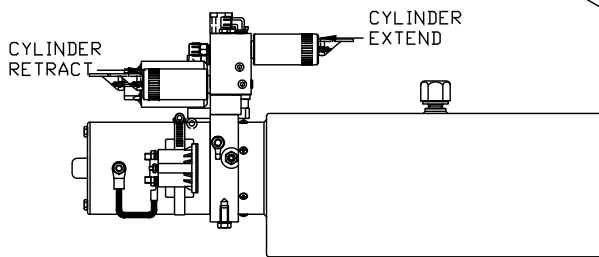
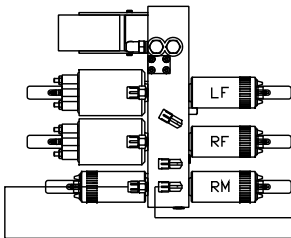
- Ⓐ AP6216 HOSE ASSY .25" x 260"
ROD END - ALWAYS PRESSURIZED
- Ⓑ AP6216 HOSE ASSY .25" x 260"
CAP END
- Ⓒ AP50909 HOSE ASSY 03F x 72"
ROD END - ALWAYS PRESSURIZED - MUST
MAINTAIN EQUAL LENGTH AND DIAMETER
- Ⓓ AP4161 HOSE ASSY .25" x 120"
CAP END - MUST MAINTAIN EQUAL LENGTH
AND DIAMETER

AP53702 HOSE KIT/1 ULD

NOTE: HOSES Ⓔ AND Ⓕ ARE INCLUDED
WITH THE ROOM EXTENSION MECHANISM.

- Ⓔ AP24818 HOSE ASSY HWH02HP x 86"
CAP END - MUST MAINTAIN EQUAL LENGTH
AND DIAMETER
- Ⓕ AP24632 HOSE ASSY HWH02HP x 48"
ROD END - ALWAYS PRESSURIZED - MUST
MAINTAIN EQUAL LENGTH AND DIAMETER
- Ⓖ AP51449 HOSE ASSY 03F x 120"
CAP END - MUST MAINTAIN EQUAL LENGTH
AND DIAMETER

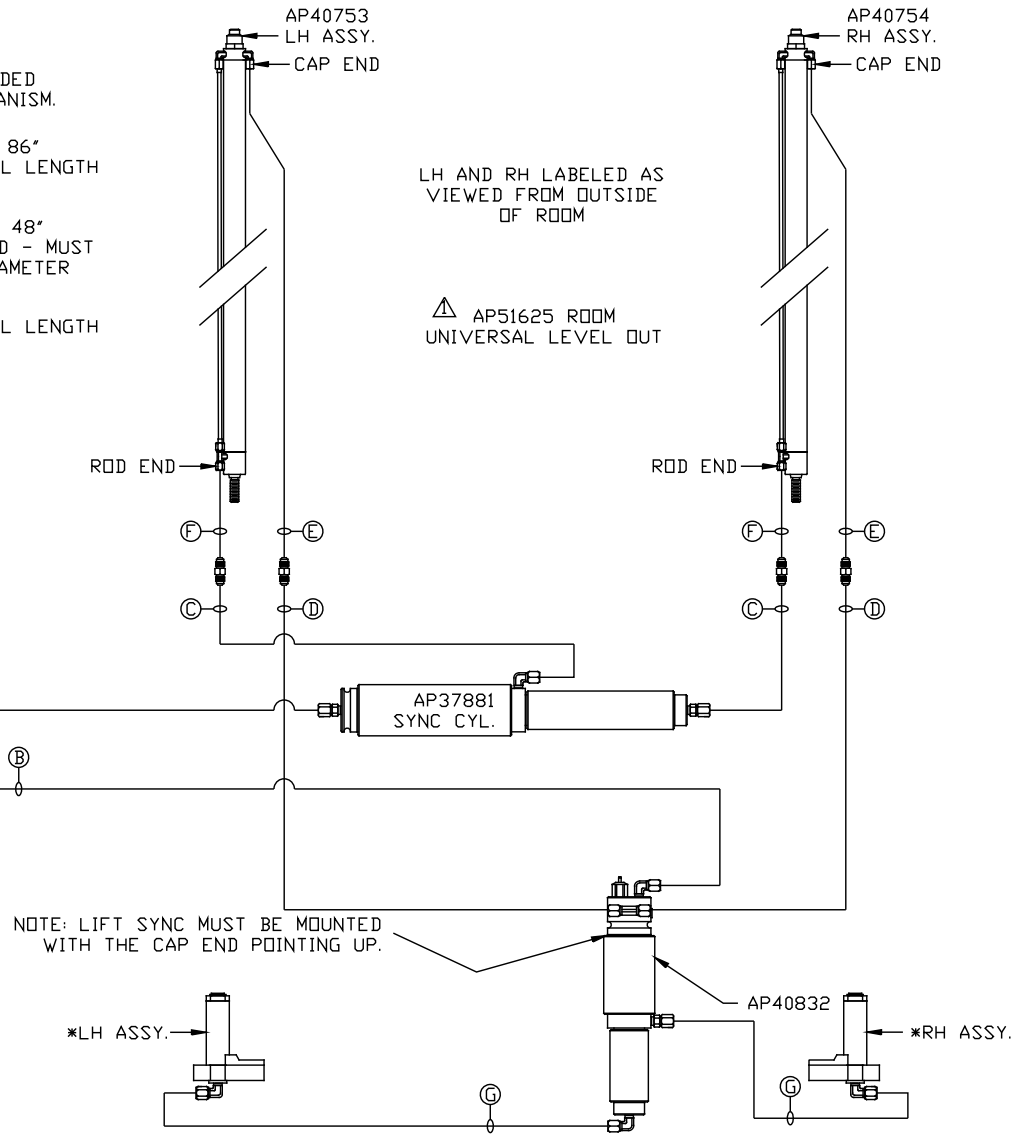
TOP VIEW-PUMP MANIFOLD



SIDE VIEW PUMP/MANIFOLD-AP52035

LOCATION AND ORIENTATION OF
PUMP/MANIFOLD ASSEMBLY WILL
DIFFER DEPENDING UPON O.E.M.

NOTE: INSTALLATION MUST CONFORM TO GOOD SHOP PRACTICES, SAE
STANDARDS, RVIA STANDARDS, AND OTHER APPLICABLE STANDARDS.



MP70792 B/B
07MAY15